

THE CONTENTS OF THIS DRAWING ARE THE EXCLUSIVE PROPERTY OF THE TECHNICAL MATERIEL CORP. ITS UNAUTHORIZED USE FOR REPRODUCTION IN WHOLE OR IN PART IS STRICTLY FORBIDDEN.

REQ. PER UNIT

USED ON

MODEL

ASS'Y. NO.

DATE

1

GPT-200K

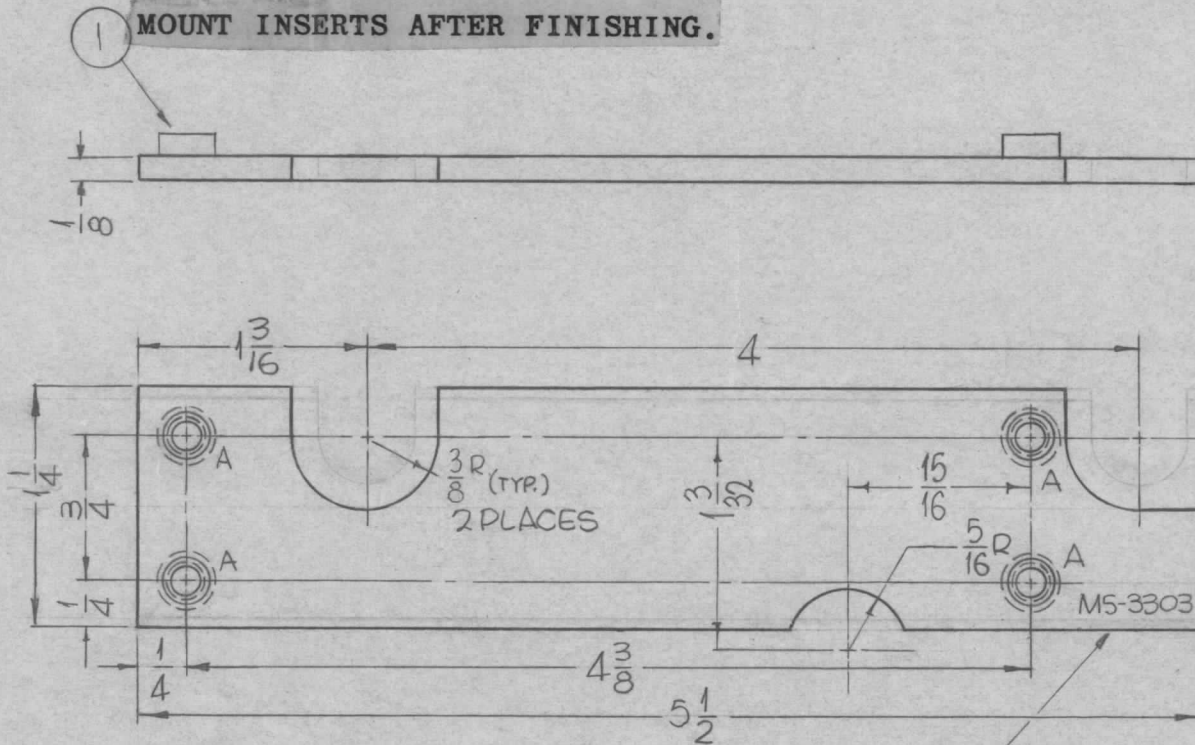
AT-105

7-11-63

MS-3303



1 MOUNT INSERTS AFTER FINISHING.



HOLES:

A ~ .250-.253 DIA. (4 REQ.)

METAL STAMP TMC PART NO. 1/8 HIGH GOTHIC. W/LATEST REVISION LETTER

4	1	NT-129-1032-6	NUT, ROUND, SWAGE TYPE		
REQ.	ITEM	PART NO.	F. BUDETTI	DESCRIPTION	SYMBOL
		1/8 THICK	THE TECHNICAL MATERIEL CORP. MAMARONECK, NEW YORK		
		STOCK SIZE	PLATE, SHIELD MTG. LEFT		
		ALUMINUM			
		MATERIAL			
		5052-H32	SRG	aa	RAC
		TYPE & TEMPER	DRAWN		
		HEAT TREAT. SPEC.	CHECKED		
		5404 YELLOW TRIDITE	FINAL APPROVAL		
		FINISH & SPEC. NO.	ELEC. DES. APP.		
			MECH. DES. APP.		
			MS-3303		

0	ORIGINAL RELEASE FOR PRODUCTION	5-13-64	0	A.M.			
X2	5/16 R NOTCH ADDED	1-27-64					
SYM	DESCRIPTION	DATE	CH. NO.	DRAFTS	CHECKER	ENG. APP.	
UNLESS OTHERWISE SPECIFIED DIMENSIONS ARE IN INCHES AND INCLUDE CHEMICALLY APPLIED OR PLATED FINISHES		SCALE		1"=1"			
DECIMALS	FRACTIONS	CODE	1"=1"				
.X ± .05	± 1/64	A					
.XX ± .01	ANGLES						
.XXX ± .005	± 0° 30'						
TOLERANCES							