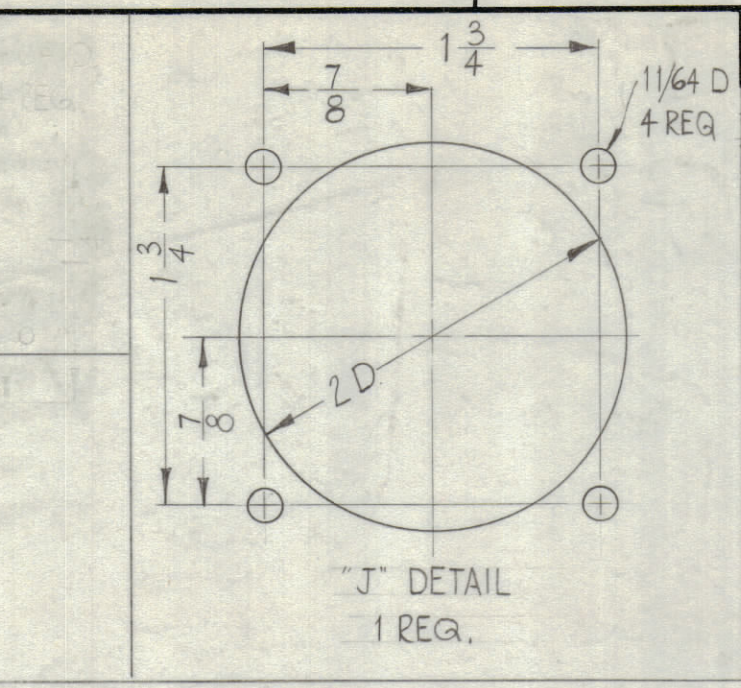
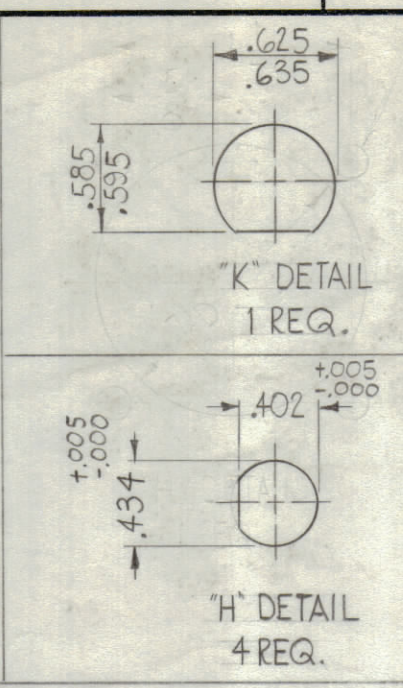
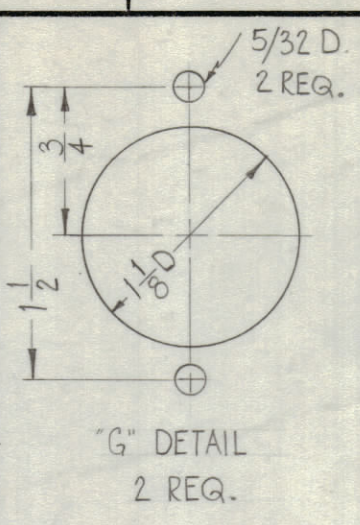
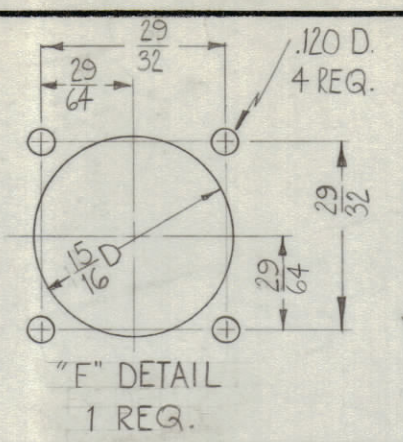
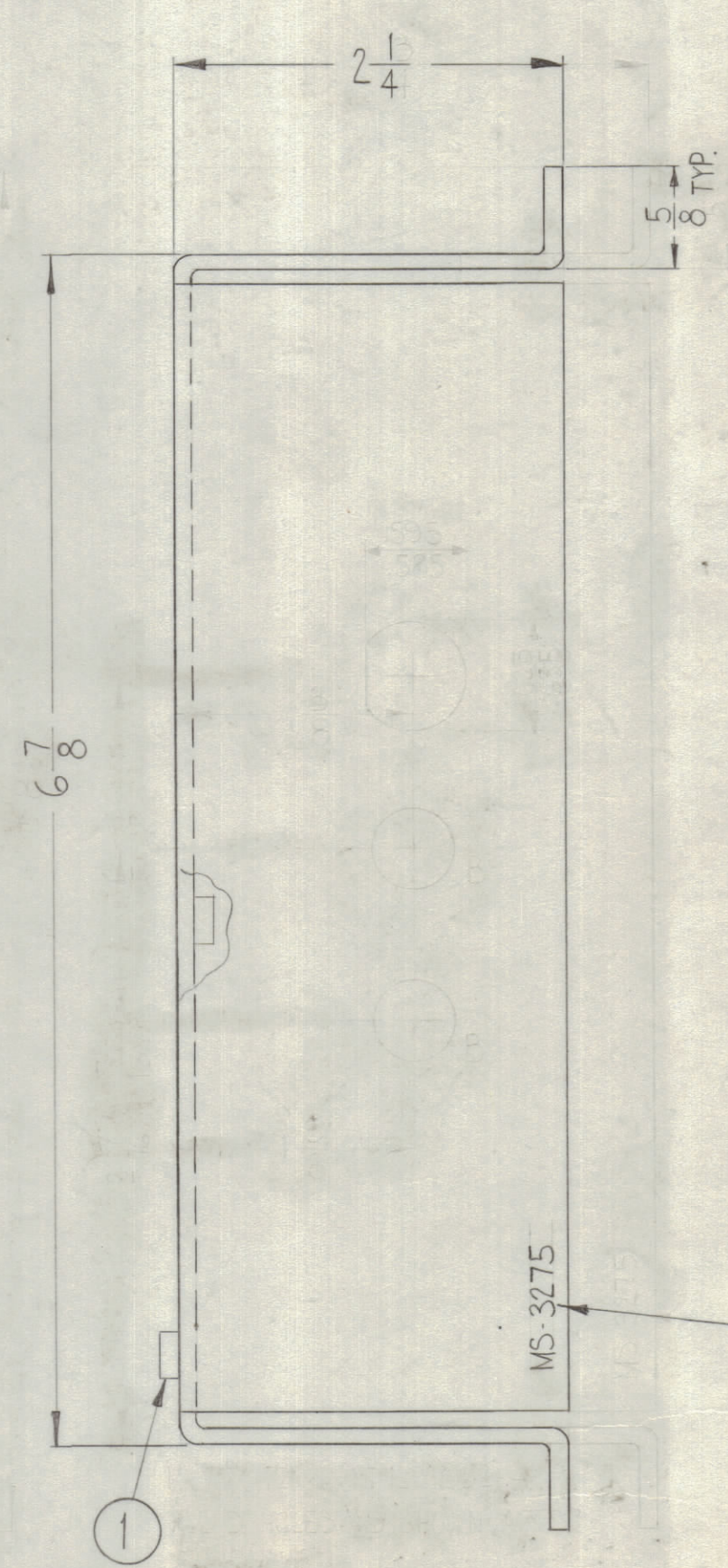
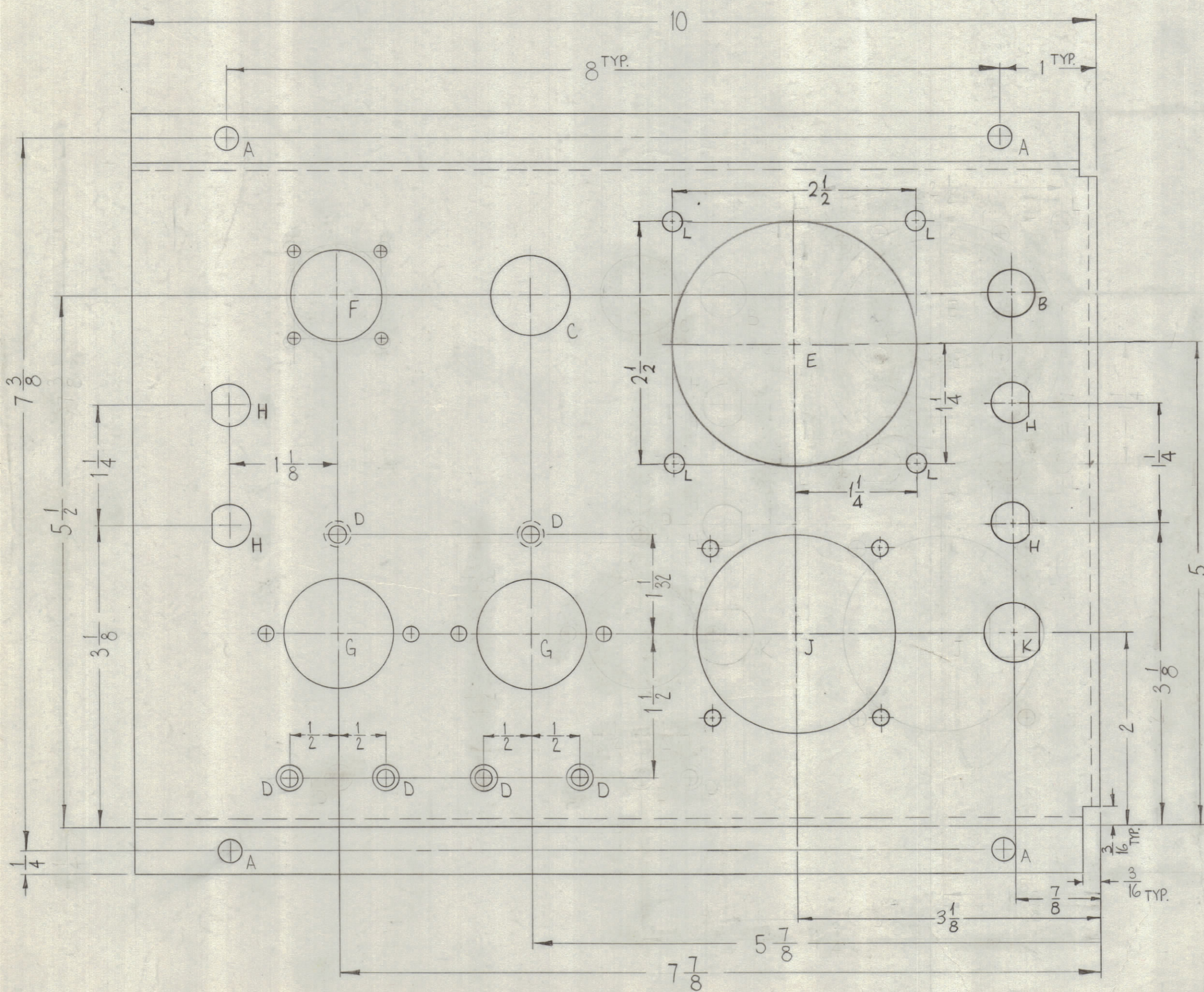


HOLE	DESCRIPTION	REQ.
A	15/64 DIA.	4
B	15/32 DIA.	1
C	13/16 DIA.	1
D	.191-.194 DIA.	6
E	2 1/2 DIA.	1
L	13/64 DIA.	4



REVISIONS					
ZONE	SYM	DESCRIPTION	DATE	E.M.N. NO.	APPD
X5		7/8 WAS 3/8, 3/8 DETAIL E & L HOLES WERE 1/8	3-11-64		
O		ORIGINAL RELEASE FOR PRODUCTION	5/27/64	O	A.M.



METAL STAMP TMC PART NO.
1/8 HIGH GOTHIC.
WITH LATEST REVISION LETTER

- UNLESS OTHERWISE SPECIFIED:
1. USE MATERIAL THICKNESS FOR MAXIMUM RADIUS ON ALL BENDS.
 2. ALL ANGULAR BENDS 90°.
 3. REMOVE ALL BURRS AND SHARP EDGES.
 4. MOUNT INSERTS AFTER FINISHING.

QTY./UNIT	MODEL USED ON	ASS'Y. NO.
1	GPT-200K AX-397	A-2761
SCALE 1=1	CODE A	

REQ'D.	ITEM	PART NUMBER	DESCRIPTION	SYMBOL
6	1	NT-129-632-4	NUT, ROUND, SWAGE TYPE	D

LIST OF MATERIAL	
MATERIAL .081 ALUMINUM 5052-H32	THE TECHNICAL MATERIEL CORP. MAMARONECK, NEW YORK
FINISH 3404 YELLOW IRIDITE	TITLE CHASSIS, CONNECTOR MOUNTING

UNLESS OTHERWISE SPECIFIED DIMENSIONS ARE IN INCHES AND INCLUDE CHEMICALLY APPLIED OR PLATED FINISHES	DRAWN W.A. FRANCO	DATE 9-19-63	FINAL APPROVAL	DATE
DECIMALS X ± .05 XX ± .01 .XXX ± .005	CHECKED aa <td>DATE</td> <td>MECH. DES. [Signature] <td>DATE 5/27/64 </td></td>	DATE	MECH. DES. [Signature] <td>DATE 5/27/64 </td>	DATE 5/27/64
FRACTIONS ± 1/64 ANGLES ± 0° 30'				

NOTES

THE CONTENTS OF THIS DRAWING ARE THE EXCLUSIVE PROPERTY OF THE TECHNICAL MATERIEL CORP. ITS UNAUTHORIZED USE OR REPRODUCTION IN WHOLE OR IN PART IS STRICTLY FORBIDDEN.

MS-3275