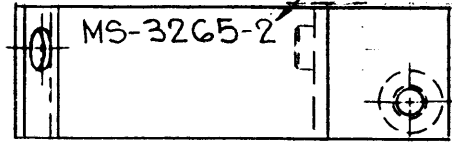


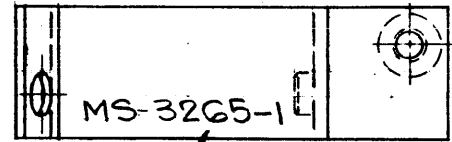
METAL STAMP TMC PART NO.  
1/8 HIGH GOTHIC.



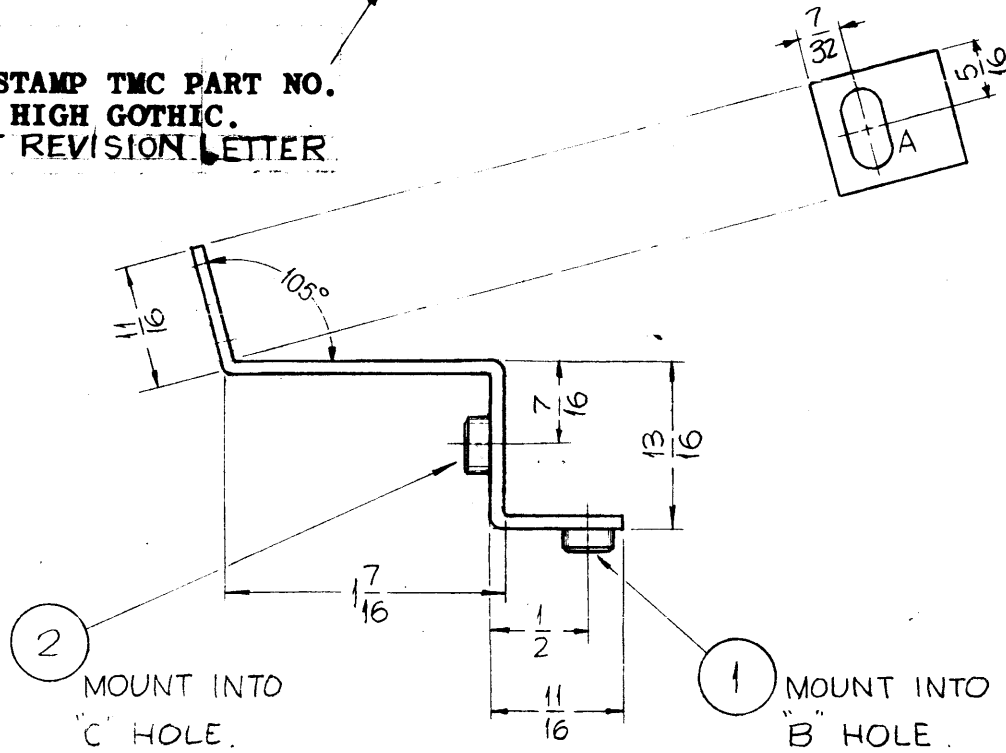
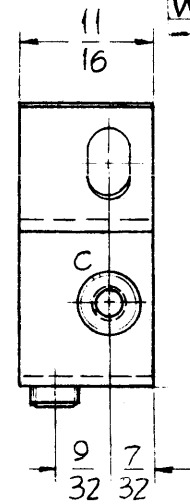
MS-3265-2

MS-3265 0

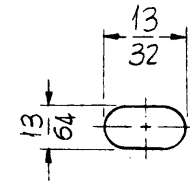
REVISIONS					
SYM	DESCRIPTION	DATE	E.M.N. NO.	DRAFT	CHKD
0	ORIGINAL RELEASE FOR PRODUCTION	5-13-64	0	A.M.	



METAL STAMP TMC PART NO.  
1/8 HIGH GOTHIC.  
W/LATEST REVISION LETTER



MS-3265-1



HOLES:

- A ~ SEE DETAIL
- B ~ .191-.194 DIA. (1 REQ.)
- C ~ .221-.224 DIA. (1 REQ.)

REQ'D.	ITEM	PART NUMBER	DESCRIPTION	SYMBOL
1	2	NT-129-832-4	NUT ROUND, SWAGE TYPE	C
1	1	NT-129-632-4	NUT ROUND, SWAGE TYPE	B

F. BUDETTI LIST OF MATERIAL

MATERIAL  
.064 THICK ALUMINUM  
5052 H-32

FINISH  
S 404 YELLOW IRIDITE  
S 114 ZINC CHROMATE  
S 115 TMC GRAY

THE TECHNICAL MATERIEL CORP.  
MAMARONECK, NEW YORK

TITLE  
BRACKET, SUPPORT, METER PANEL

UNLESS OTHERWISE SPECIFIED  
DIMENSIONS ARE IN INCHES AND INCLUDE  
CHEMICALLY APPLIED OR PLATED FINISHES

DECIMALS  
.X ± .05  
.XX ± .01  
.XXX ± .005

FRACTIONS  
± 1/64  
AM LES  
± 0° 30'

TOLERANCES

DRAWN SRG	DATE 2-6-63	FINAL APPROVAL RAC	DATE
CHECKED AA	DATE		
ELECT. DES. C.B.	DATE 7/2/64	MS-3265	0
MECH. DES. dic 2/1/64	DATE	SHEET	REV. LTR.

NOTE: UNLESS OTHERWISE SPECIFIED  
USE MATERIAL THICKNESS FOR  
MAXIMUM RADIUS ON ALL BENDS.  
MOUNT INSERTS AFTER FINISHING  
ALL BENDS 90°

NOTES

1 ea	GPT-200K	AM-118
Q'TY./UNIT	MODEL USED ON	ASS'Y. NO.
SCALE	CODE A	
THE CONTENTS OF THIS DRAWING ARE THE EXCLUSIVE PROPERTY OF THE TECHNICAL MATERIEL CORP. ITS UNAUTHORIZED USE OR REPRODUCTION IN WHOLE OR IN PART IS STRICTLY FORBIDDEN.		