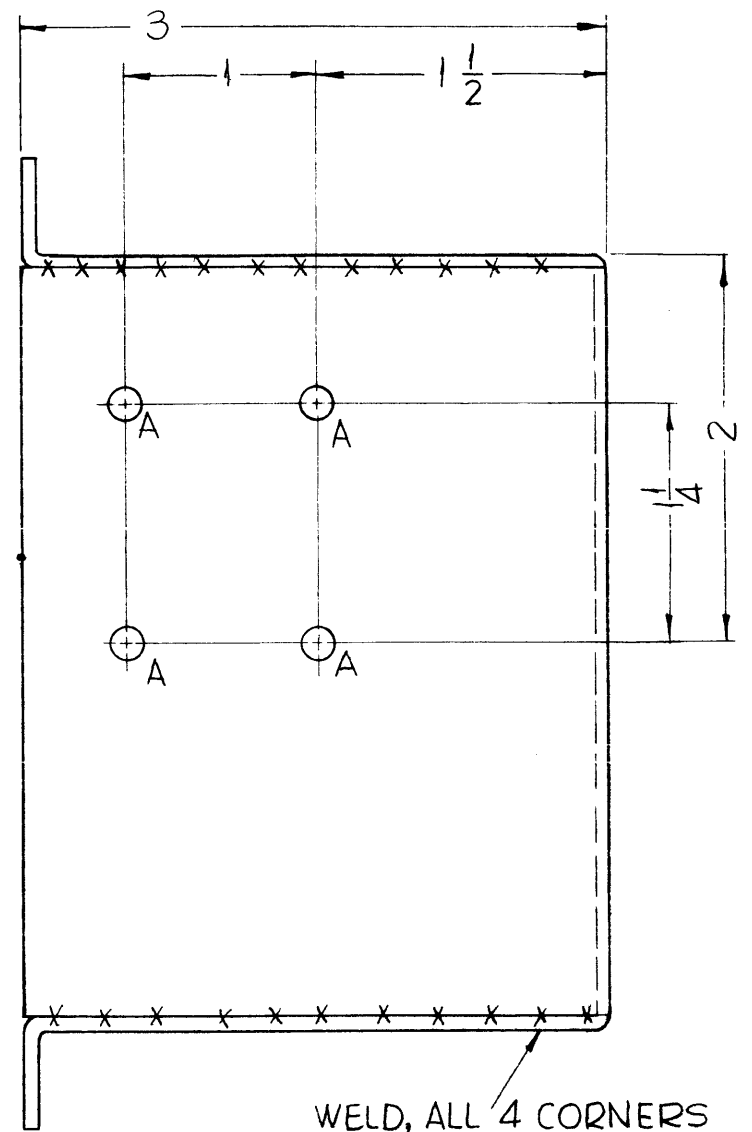


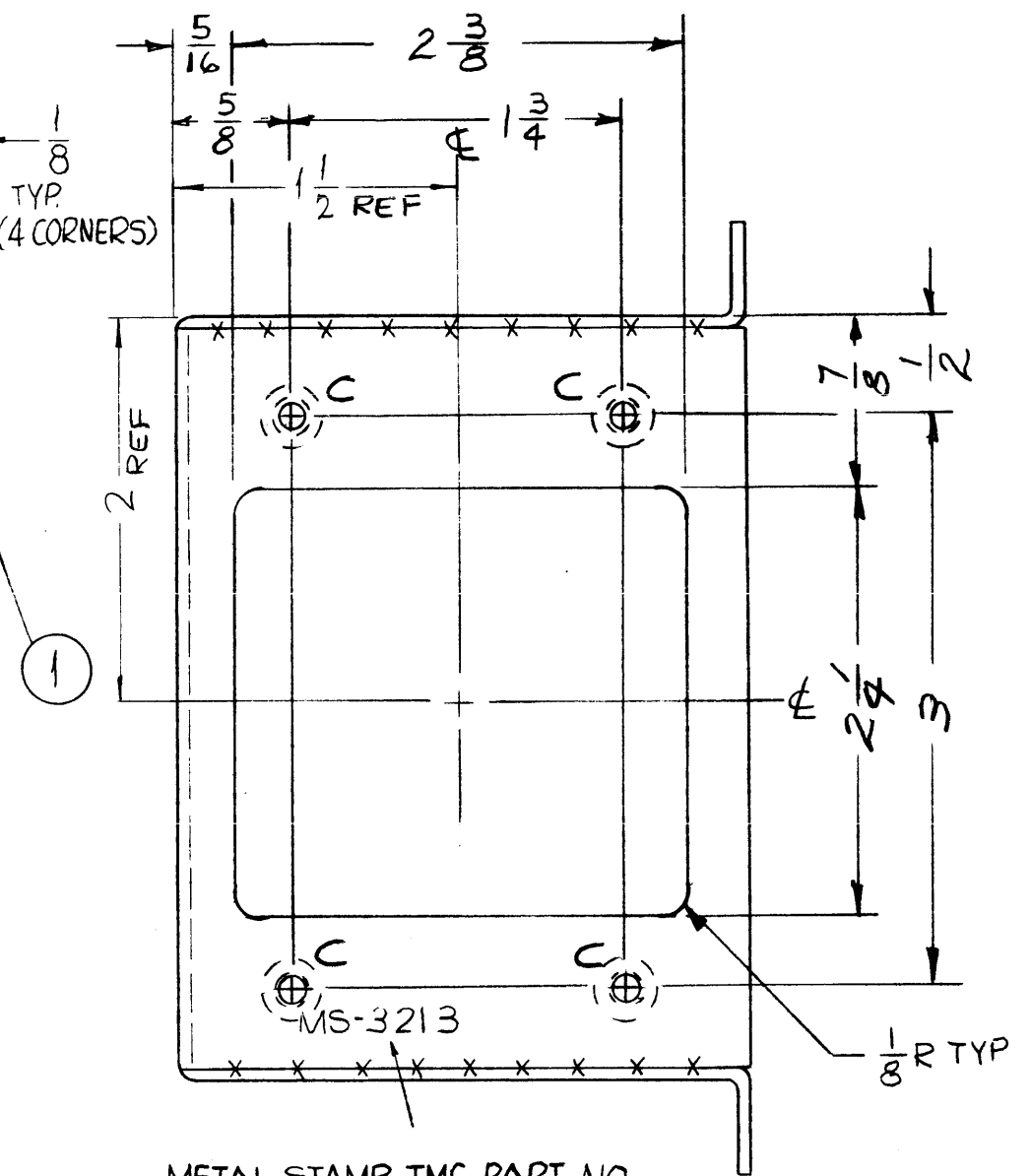
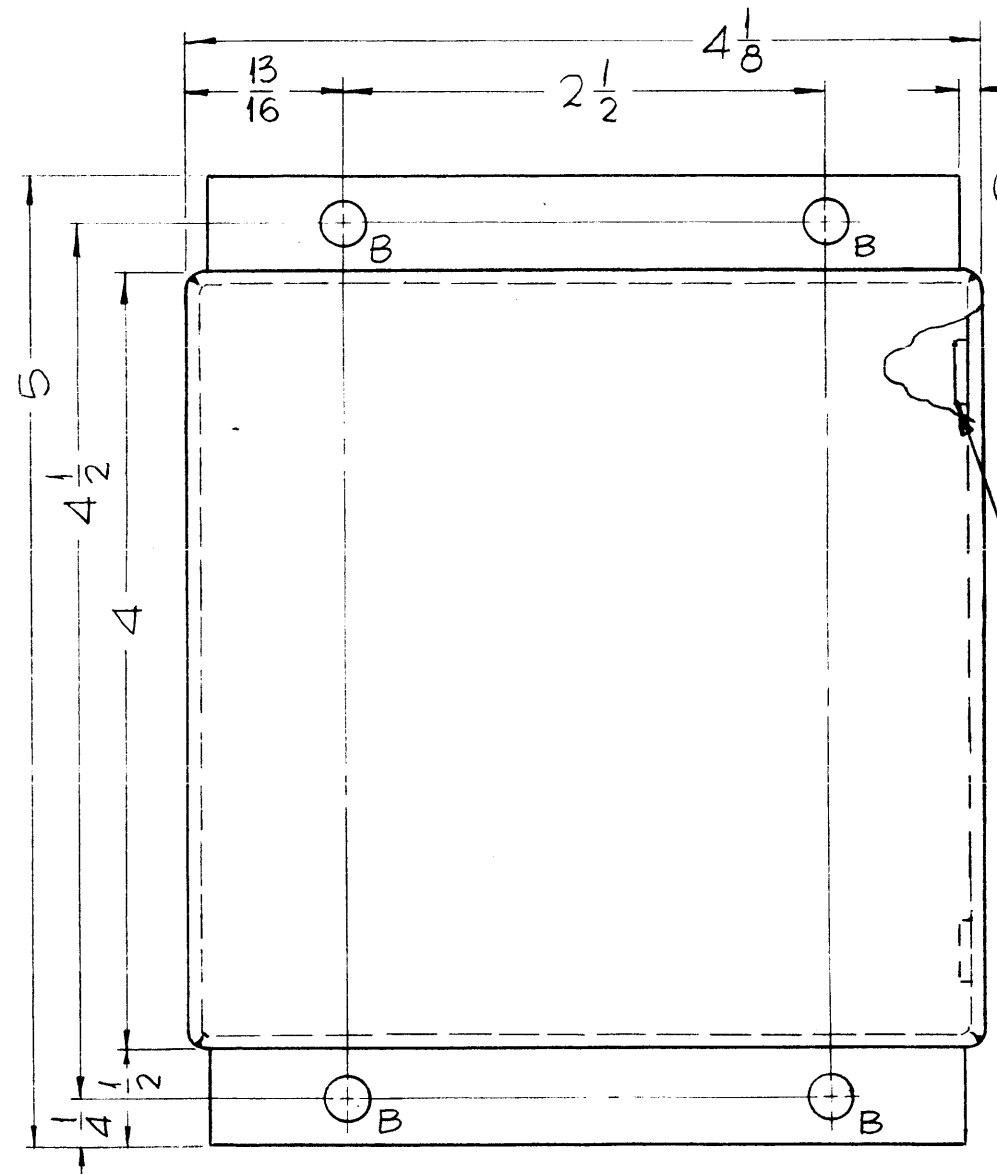
MS-3213

THE CONTENTS OF THIS DRAWING ARE THE EXCLUSIVE PROPERTY OF THE TECHNICAL MATERIEL CORP. ITS UNAUTHORIZED USE OR REPRODUCTION IN WHOLE OR IN PART IS STRICTLY FORBIDDEN.

HOLES:
 A ~ 11/64 DIA. — 4 REQ.
 B ~ 15/64 DIA. — 4 REQ.
 C ~ .221-.224 DIA. — 4 REQ.



WELD, ALL 4 CORNERS AND GRIND SMOOTH.



METAL STAMP TMC PART NO. 1/8 HIGH GOTHIC W/LATEST REV. LETTER.

UNLESS OTHERWISE SPECIFIED:

1. USE MATERIAL THICKNESS FOR MAXIMUM RADIUS ON ALL BENDS.
2. ALL ANGULAR BENDS 90°.
3. REMOVE ALL BURRS AND SHARP EDGES.
4. MOUNT INSERTS AFTER FINISHING.

REF: LD-1269

4	1	NT-129-832-4	NUT, ROUND, SWAGE TYPE	
REQ.	ITEM	PART NO.	F. BUDETTI DESCRIPTION	SYMBOL
.081 THICK STOCK SIZE			THE TECHNICAL MATERIEL CORP. MAMARONECK, NEW YORK	
ALUMINUM MATERIAL			CHASSIS, METERING CIRCUIT MTG.	
5052-H32		SRG	aa	RK
TYPE & TEMPER		HEAT TREAT. SPEC.	DRAWN	CHECKED
S-245 SILVER PLATE BRIGHT			DB	MECH/64
FINISH & SPEC. NO.		ELEC. DES. APP.	MECH. DES. APP.	MS-3213

Ø	ORIGINAL RELEASE FOR PROD.	5-18-64	SRG			
SYM	DESCRIPTION	DATE	CH. NO.	DRAFTS	CHECKER	ENG. APP.
UNLESS OTHERWISE SPECIFIED:		SCALE: 1" = 1"				
DIMENSIONS ARE IN INCHES		MAXIMUM ALLOWABLE TOLERANCES HAVE BEEN DETERMINED AND ANY DEVIATIONS WILL BE CAUSE FOR REJECTION.				
TOLERANCES ON FRACTIONS ± 1/64 DECIMALS ± .005 ANGLES ± 1/2°		REMOVE ALL BURRS AND SHARP EDGES				

1	GPT-200K	AX-395	A-281B	7-18-63
REQ. PER UNIT	MODEL	SECTION	ASS'Y. NO.	DATE
USED ON				