

7

6

5

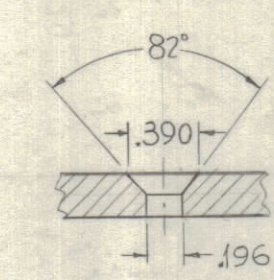
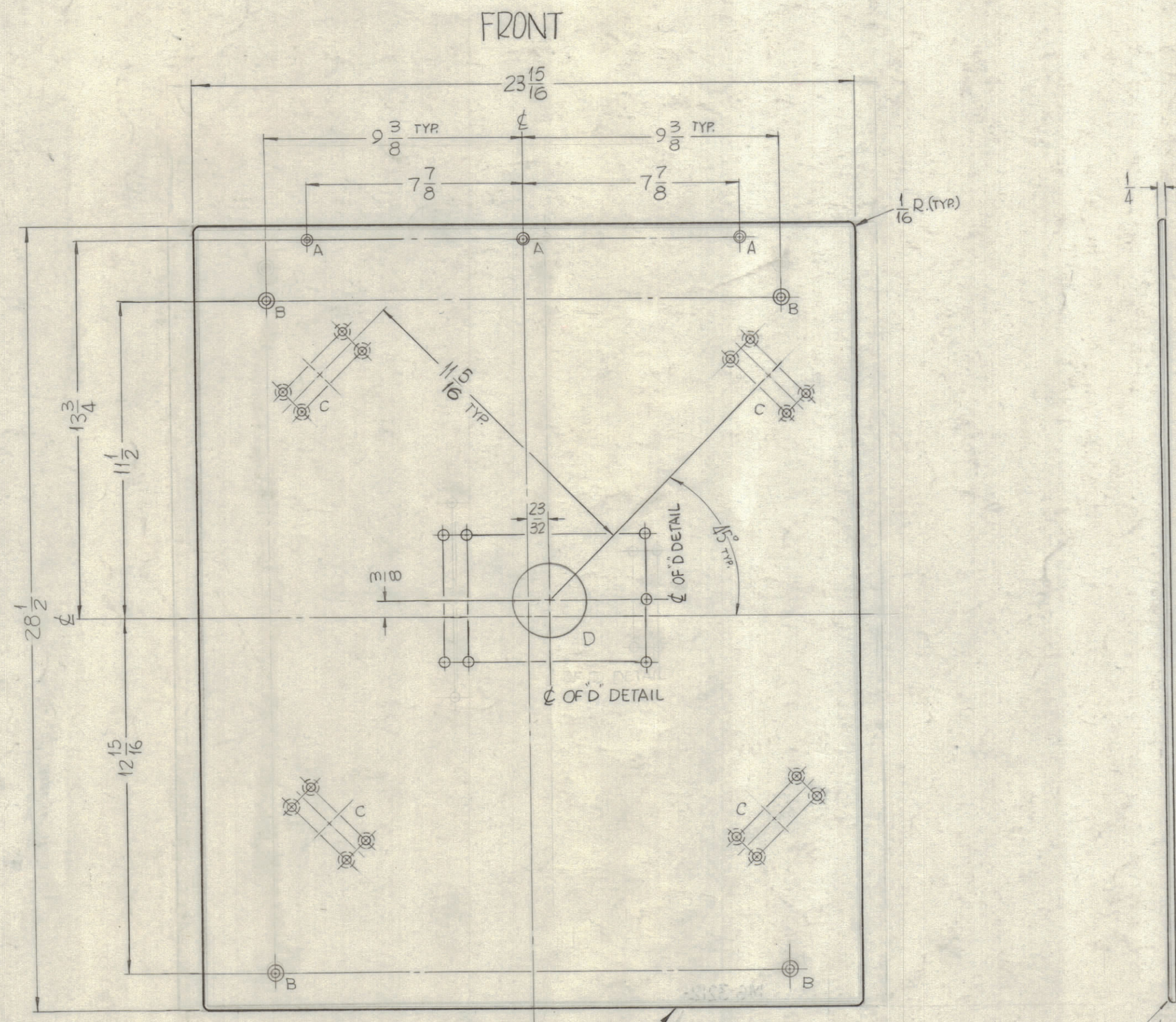
4

3

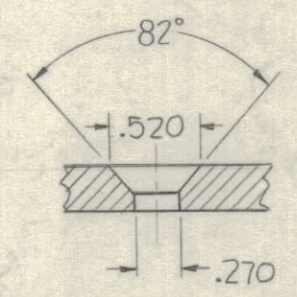
2

1

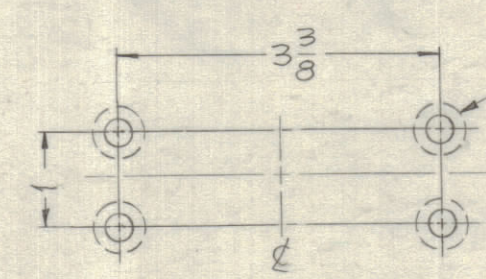
REVISIONS					
ZONE	SYM	DESCRIPTION	DATE	E.M.N. NO.	APPD
Ø		ORIGINAL RELEASE FOR PRODUCTION	5-18-64		SRG



A-DETAIL
(3REQ)

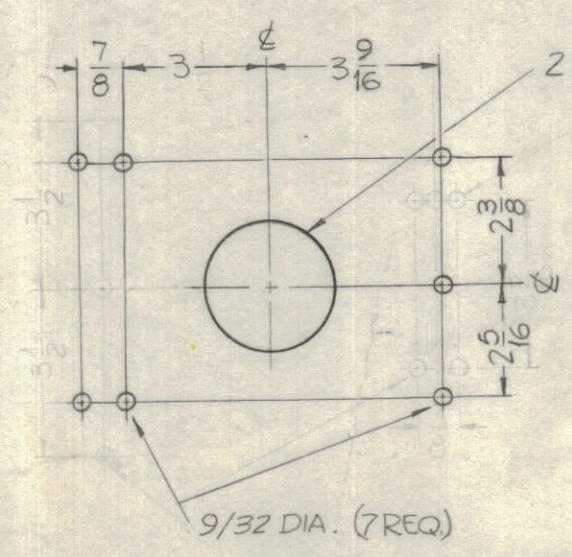


B-DETAIL
(4REQ.)



SAME AS B-DETAIL
(4REQ)

C-DETAIL
(4REQ.)
90° APART



D-DETAIL
(1REQ)

NOTE:
REMOVE ALL SHARP EDGES & CORNERS.

NOTES

1	GPT-200K	AS-123
Q'TY./UNIT	MODEL USED ON	ASS'Y. NO.
SCALE 1/4:1	CODE A	
THE CONTENTS OF THIS DRAWING ARE THE EXCLUSIVE PROPERTY OF THE TECHNICAL MATERIEL CORP. ITS UNAUTHORIZED USE OR REPRODUCTION IN WHOLE OR IN PART IS STRICTLY FORBIDDEN.		

REQ'D.	ITEM	PART NUMBER	DESCRIPTION	SYMBOL
F. BUDETTI LIST OF MATERIAL				
MATERIAL		THE TECHNICAL MATERIEL CORP. MAMARONECK, NEW YORK		
1/4 THICK ALUMINUM 2024-T4		TITLE PLATE, BASE, BANDSWITCH		
FINISH		S404 YELLOW IRIDITE		
UNLESS OTHERWISE SPECIFIED DIMENSIONS ARE IN INCHES AND INCLUDE CHEMICALLY APPLIED OR PLATED FINISHES		DRAWN	DATE	FINAL APPROVAL
TOLERANCES		SRG	12-11-62	
DECIMALS .X ± .05		CHECKED	DATE	
FRACTIONS ± 1/64		aa		
ANGLES ± 0° 30'		ELECT. DES.	DATE	
.XXX ± .005		MECH. DES.	DATE	
		MS-3212		
		SHEET		
		REV. LTR.		

MS-3212
Ø