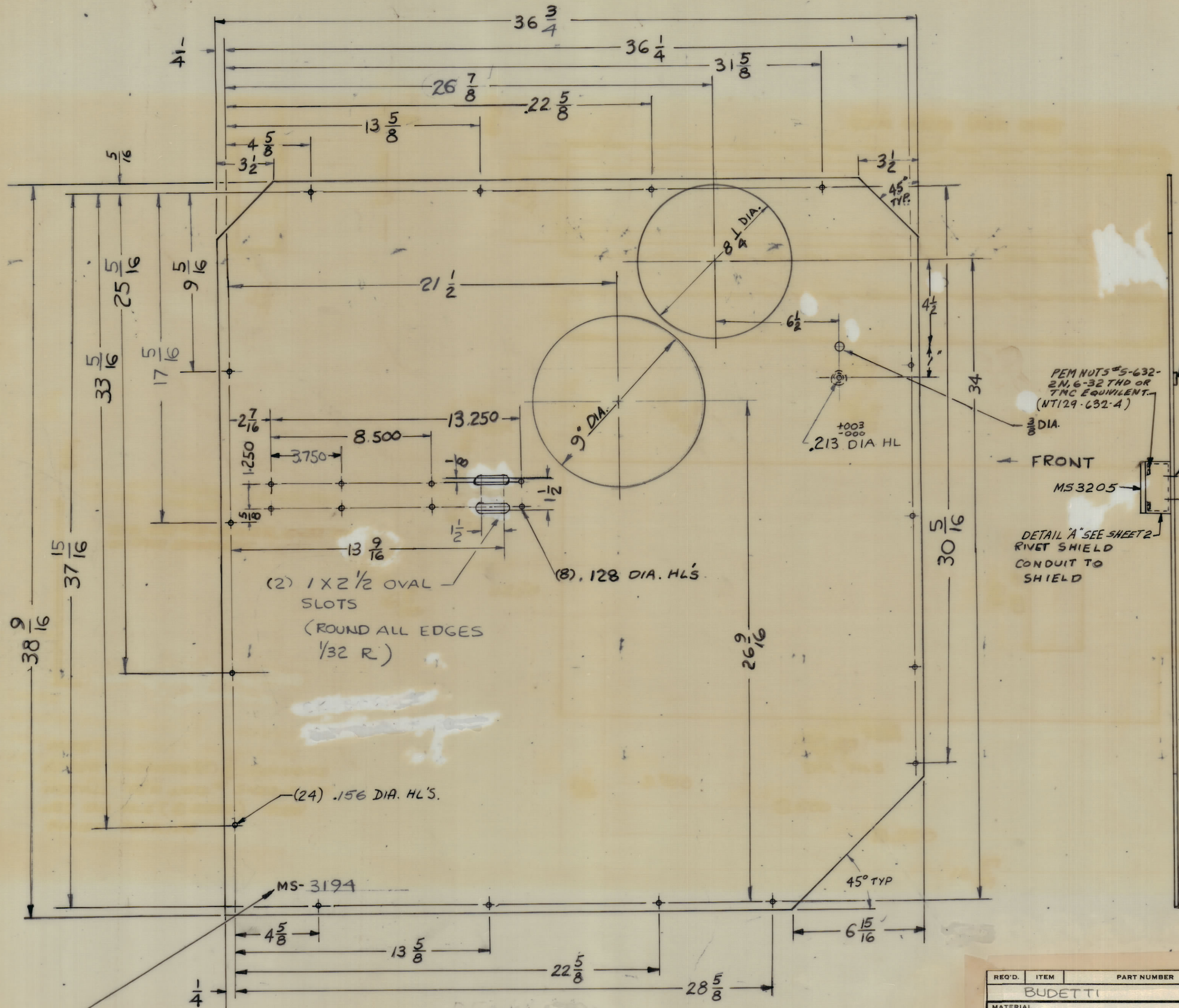


REVISIONS					
ZONE	SYM	DESCRIPTION	DATE	E.M.N. NO.	DRAFT-CHKD-APPD
E		REVISED AND REDRAWN COMPLETELY.	7.9.65	14385	P.V. JTB



PEM NUT 5-832-IN
8-32 THD. OR TMC EQUIV. (NT129-832-4)

PEM NUTS 5-632-2N, 6-32 THD OR TMC EQUIV. (NT129-632-4)

RIVET OVER FAR SIDE 1/8 DIA. X 1/4 LG. MS20470 A4-4

FRONT
MS3205
DETAIL 'A' SEE SHEET 2
RIVET SHIELD
CONDUIT TO
SHIELD

(2) 1 X 2 1/2 OVAL SLOTS
(ROUND ALL EDGES 1/32 R.)

(8) .128 DIA. H.L'S.

(24) .156 DIA. H.L'S.

DRILL JIG ALL HOLES
(.156 DIA. HOLES TO MATCH 6-32 TAP HOLES ON RIGHT SIDE OF RA. FRAME.)

METALSTAMP TMC PART NO. 1/8 HIGH GOTHIC AS SHOWN. W/LATEST REVISION LETTER.

REF-TMC DWG LDI272

REQ'D.	ITEM	PART NUMBER	DESCRIPTION	SYMBOL
BUDETTI LIST OF MATERIAL				
MATERIAL 064 ALUMINUM 5052-H32			THE TECHNICAL MATERIEL CORP. MAMARONECK, NEW YORK	
FINISH S404 IRIDITE				
			TITLE SHIELD, RIGHT SIDE	
UNLESS OTHERWISE SPECIFIED DIMENSIONS ARE IN INCHES AND INCLUDE CHEMICALLY APPLIED OR PLATED FINISHES			DRAWN D. VENERIAN DATE 7/9/65	FINAL APPROVAL DATE 9/15/65
DECIMALS .X ± .05 .XX ± .01 .XXX ± .005			TOLERANCES	ANGLES ± 1/64 ± 0° 30'
ELECT. DES.			DATE	MS-3194
MECH. DES.			DATE	E
			SHEET 1 OF 2	REV. LTR.

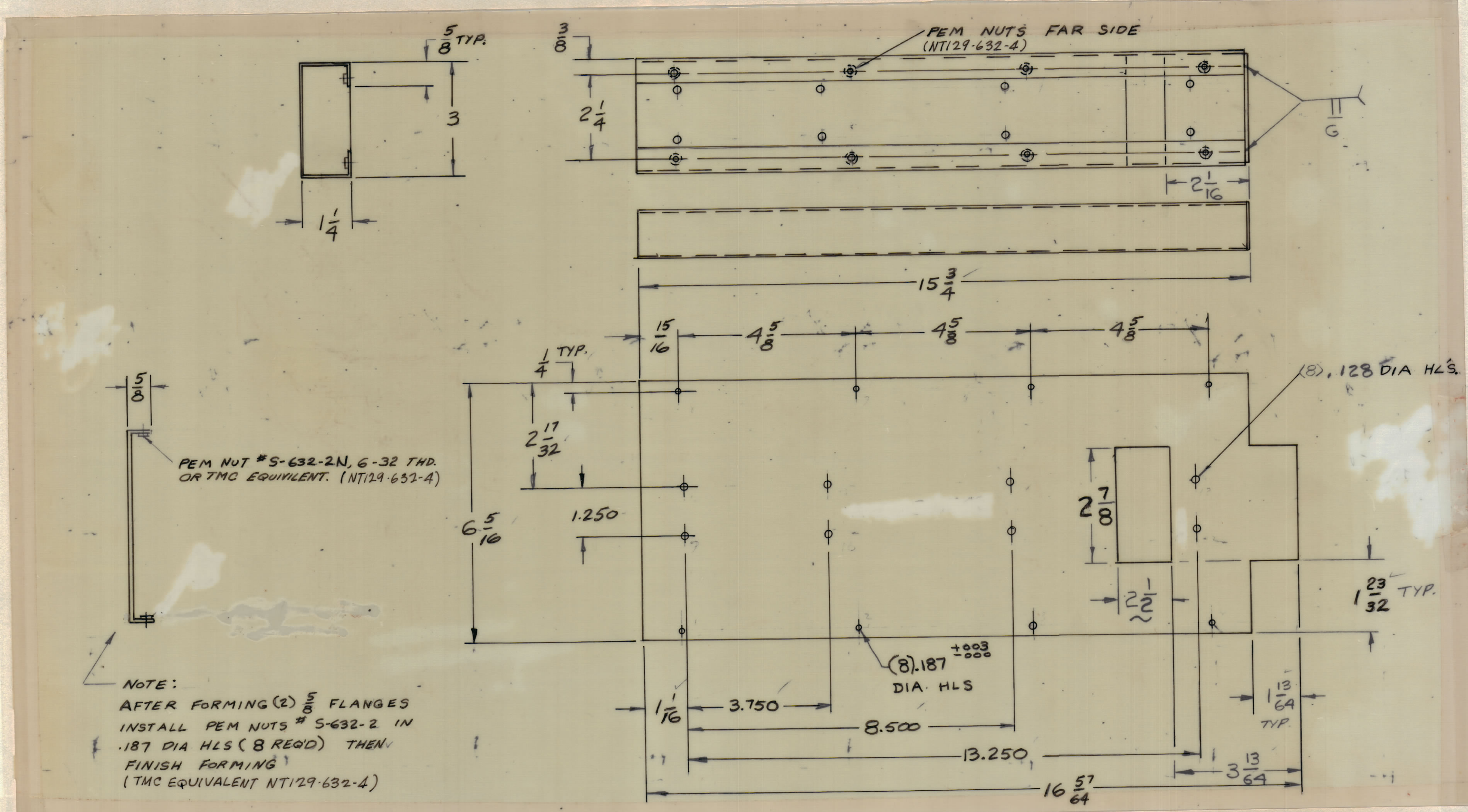
GPT200K		
Q'TY./UNIT	MODEL USED ON	ASS'Y. NO.
SCALE	CODE	

THE CONTENTS OF THIS DRAWING ARE THE EXCLUSIVE PROPERTY OF THE TECHNICAL MATERIEL CORP. ITS UNAUTHORIZED USE OR REPRODUCTION IN WHOLE OR IN PART IS STRICTLY FORBIDDEN.

NOTES

MS-3194 E

REVISIONS						
ZONE	SYM	DESCRIPTION	DATE	E.M.N. NO.	DRAFT	CHKD APPD
E		REVISED AND REDRAWN COMPLETELY	9/14/65	14385	HVV	[Signature]



NOTE:
 AFTER FORMING (2) $\frac{5}{8}$ FLANGES
 INSTALL PEM NUTS # S-632-2 IN
 .187 DIA HLS (8 REQD) THEN
 FINISH FORMING
 (TMC EQUIVALENT NT129-632-4)

DETAIL A

REQ'D.	ITEM	PART NUMBER	DESCRIPTION	SYMBOL
BUDETTI LIST OF MATERIAL				
MATERIAL 064 ALUMINUM 5052-H32			THE TECHNICAL MATERIEL CORP. MAMARONECK, NEW YORK	
FINISH S404 IRIDITE			TITLE SHIELD, RIGHT SIDE	
UNLESS OTHERWISE SPECIFIED DIMENSIONS ARE IN INCHES AND INCLUDE CHEMICALLY APPLIED OR PLATED FINISHES			DRAWN D. YENEZIAN CHECKED [Signature]	DATE 9/14/65 DATE 9/14/65 DATE 9/14/65
DECIMALS .X ± .05 .XX ± .01 .XXX ± .005			FRACTIONS ± 1/64 ANGLES ± 0° 30'	FINAL APPROVAL [Signature] DATE 9/14/65 MS 3194 SHEET 2 OF 2
TOLERANCES DECIMALS FRACTIONS			ELECT. DES. MECH. DES.	REV. LTR. E

GPT200K		
Q'TY./UNIT	MODEL USED ON	ASS'Y. NO.
SCALE	CODE	
THE CONTENTS OF THIS DRAWING ARE THE EXCLUSIVE PROPERTY OF THE TECHNICAL MATERIEL CORP. ITS UNAUTHORIZED USE OR REPRODUCTION IN WHOLE OR IN PART IS STRICTLY FORBIDDEN.		

NOTES