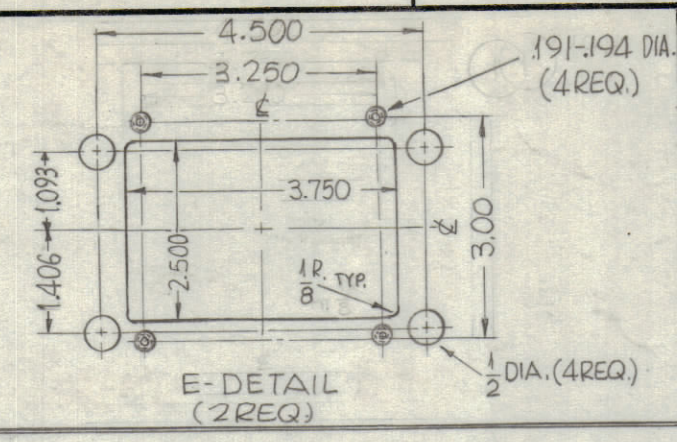
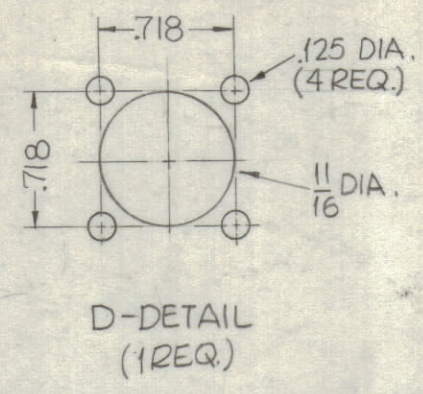
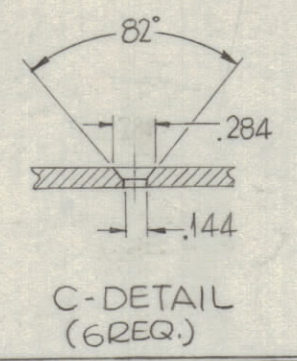
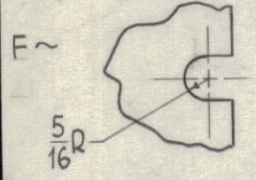
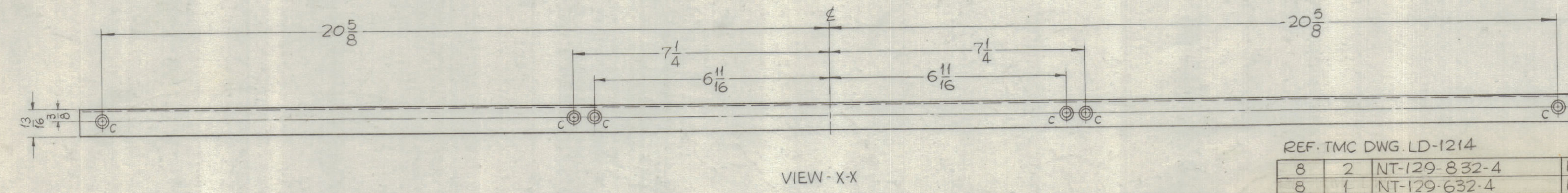
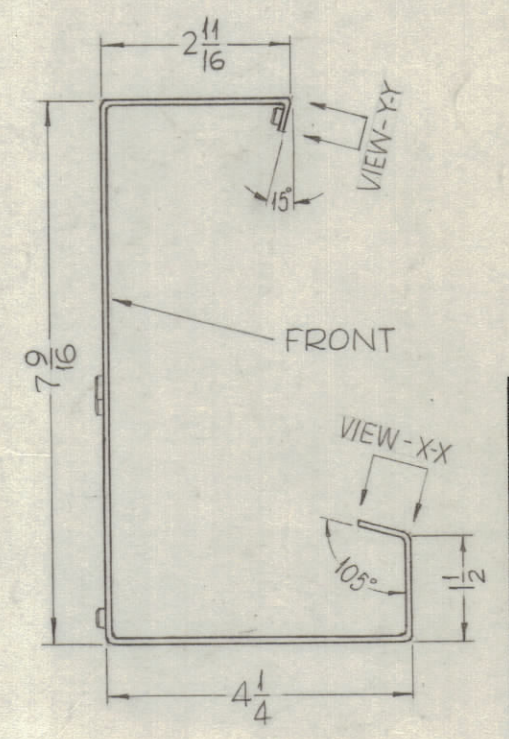
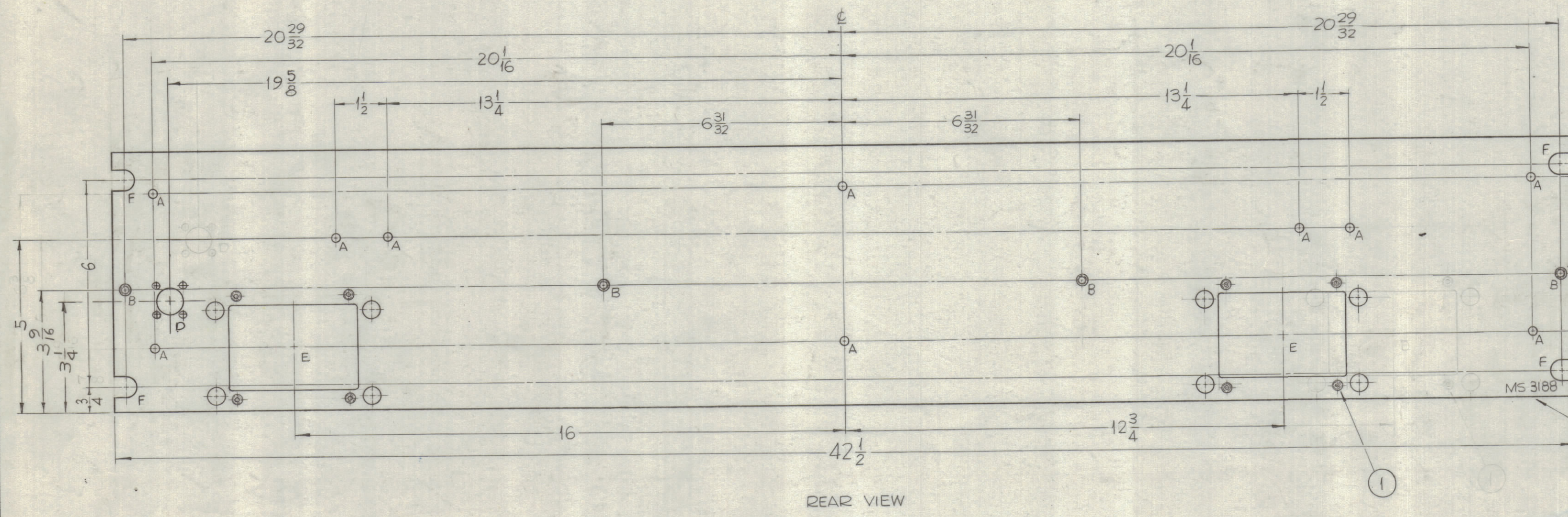
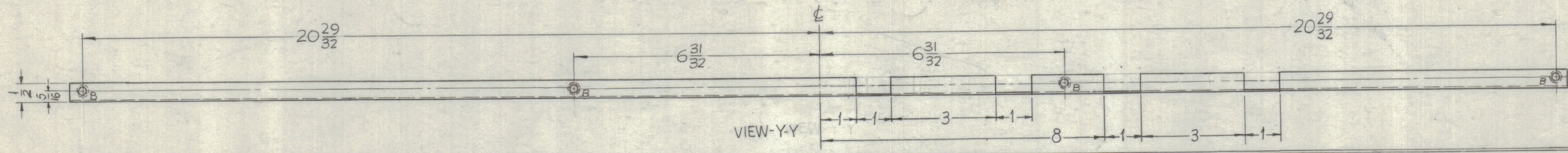


HOLES:
 A ~ 15/64 DIA. — 10 REQ.
 B ~ .221-.224 DIA. — 8 REQ.
 F ~ 4 REQ.



| REVISIONS | | | | | |
|-----------|-----|----------------------------------|---------|------------|------|
| ZONE | SYM | DESCRIPTION | DATE | E.M.N. NO. | APPD |
| 3 | X | CUTOUTS ADDED | 4-9-64 | | |
| 1 | O | ORIGINAL RELEASE FOR PRODUCTION. | 5-13-64 | O | A.M. |



UNLESS OTHERWISE SPECIFIED:
 1. USE MATERIAL THICKNESS FOR MAXIMUM RADIUS ON ALL BENDS.
 2. ALL ANGULAR BENDS 90°.
 3. REMOVE ALL BURRS AND SHARP EDGES.
 4. MOUNT INSERTS AFTER FINISHING.

FINISH NOTES:
 1. S404 - IRIDITE 14-2 AL-COAT.
 2. S114 - ZINC CHROMATE PRIMER EXCEPT REAR.
 3. S115 - SMOOTH GRAY ENAMEL

NOTES

THE CONTENTS OF THIS DRAWING ARE THE EXCLUSIVE PROPERTY OF THE TECHNICAL MATERIEL CORP. ITS UNAUTHORIZED USE OR REPRODUCTION IN WHOLE OR IN PART IS STRICTLY FORBIDDEN.

| | | | |
|---------------------------------------|------|------------------------------|-----------------------|
| REF. TMC DWG. LD-1214 | | | |
| 8 | 2 | NT-129-832-4 | NUT ROUND, SWAGE TYPE |
| 8 | 1 | NT-129-632-4 | NUT ROUND, SWAGE TYPE |
| REQ'D. | ITEM | PART NUMBER | DESCRIPTION |
| F. BUDETTI LIST OF MATERIAL | | | |
| MATERIAL | | THE TECHNICAL MATERIEL CORP. | |
| .064 ALUMINUM | | MAMARONECK, NEW YORK | |
| FINISH | | TITLE | |
| SEE NOTE | | METER BOX, P.A. | |
| UNLESS OTHERWISE SPECIFIED | | DRAWN | DATE |
| DIMENSIONS ARE IN INCHES AND INCLUDE | | 7-5-63 | |
| CHEMICALLY APPLIED OR PLATED FINISHES | | CHECKED | DATE |
| | | aa | |
| DECIMALS | | ELECT. DES. | DATE |
| .X ± .05 | | MECH. DES. | DATE |
| .XX ± .01 | | MS 3188 | |
| .XXX ± .005 | | SHEET | REV. LTR. |
| TOLERANCES | | | |
| FRACTIONS | | | |
| ± 1/64 | | | |
| ANGLES | | | |
| ± 0° 30' | | | |