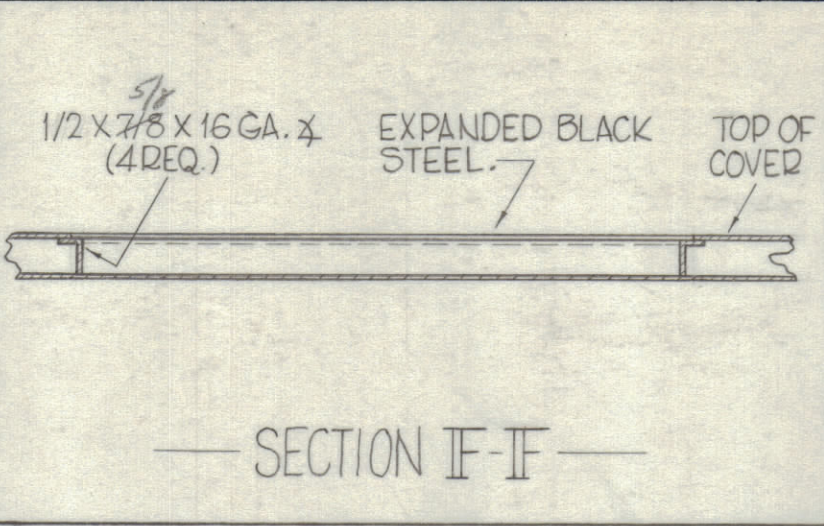
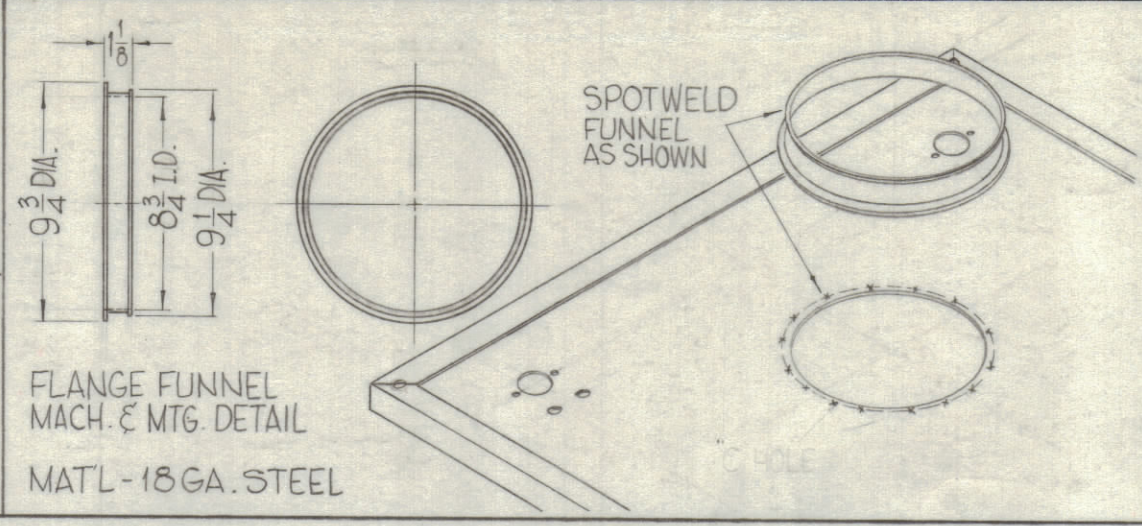
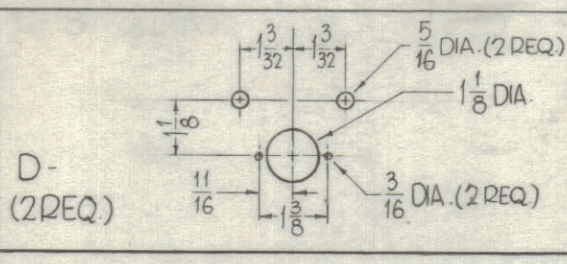
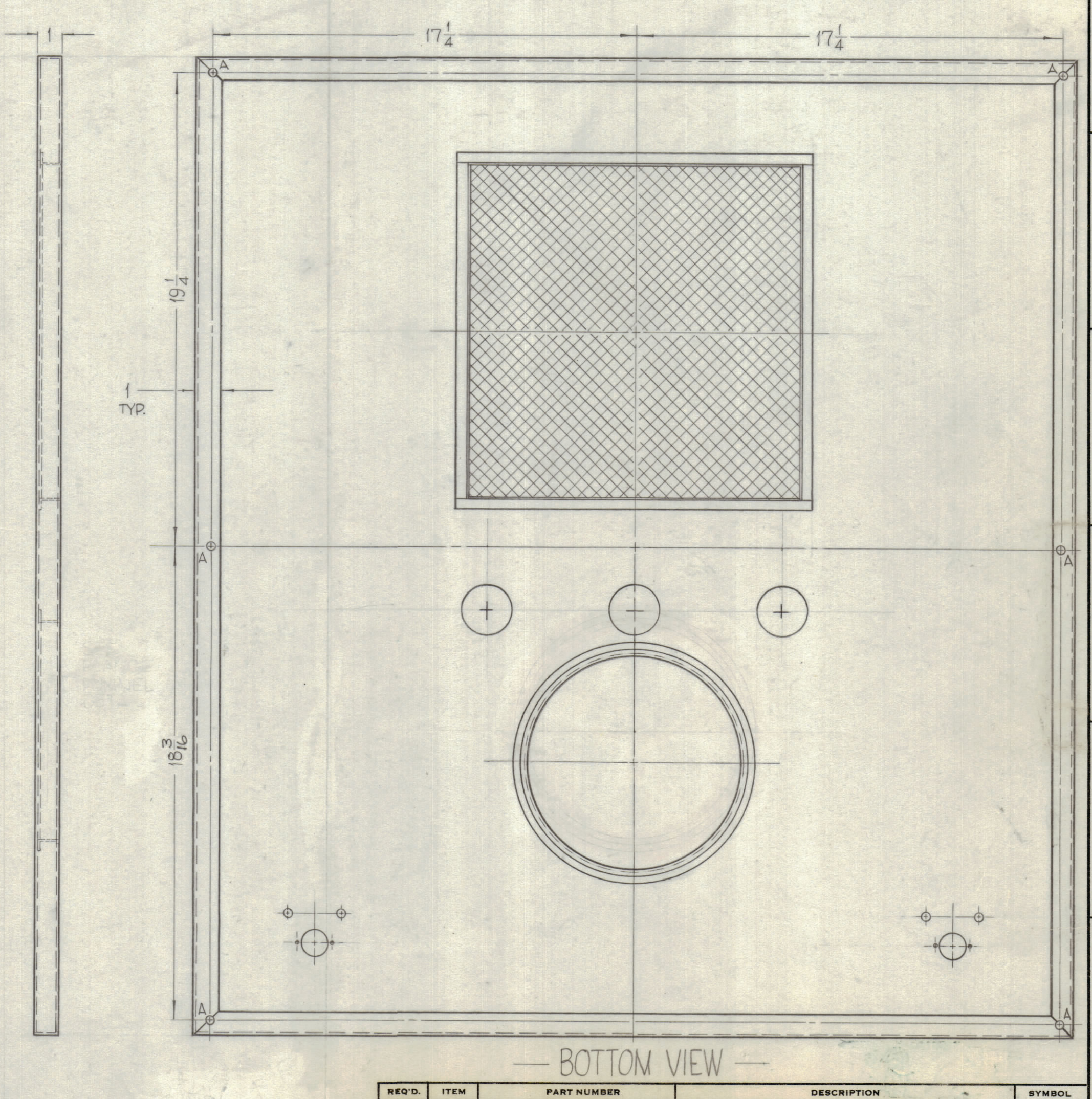
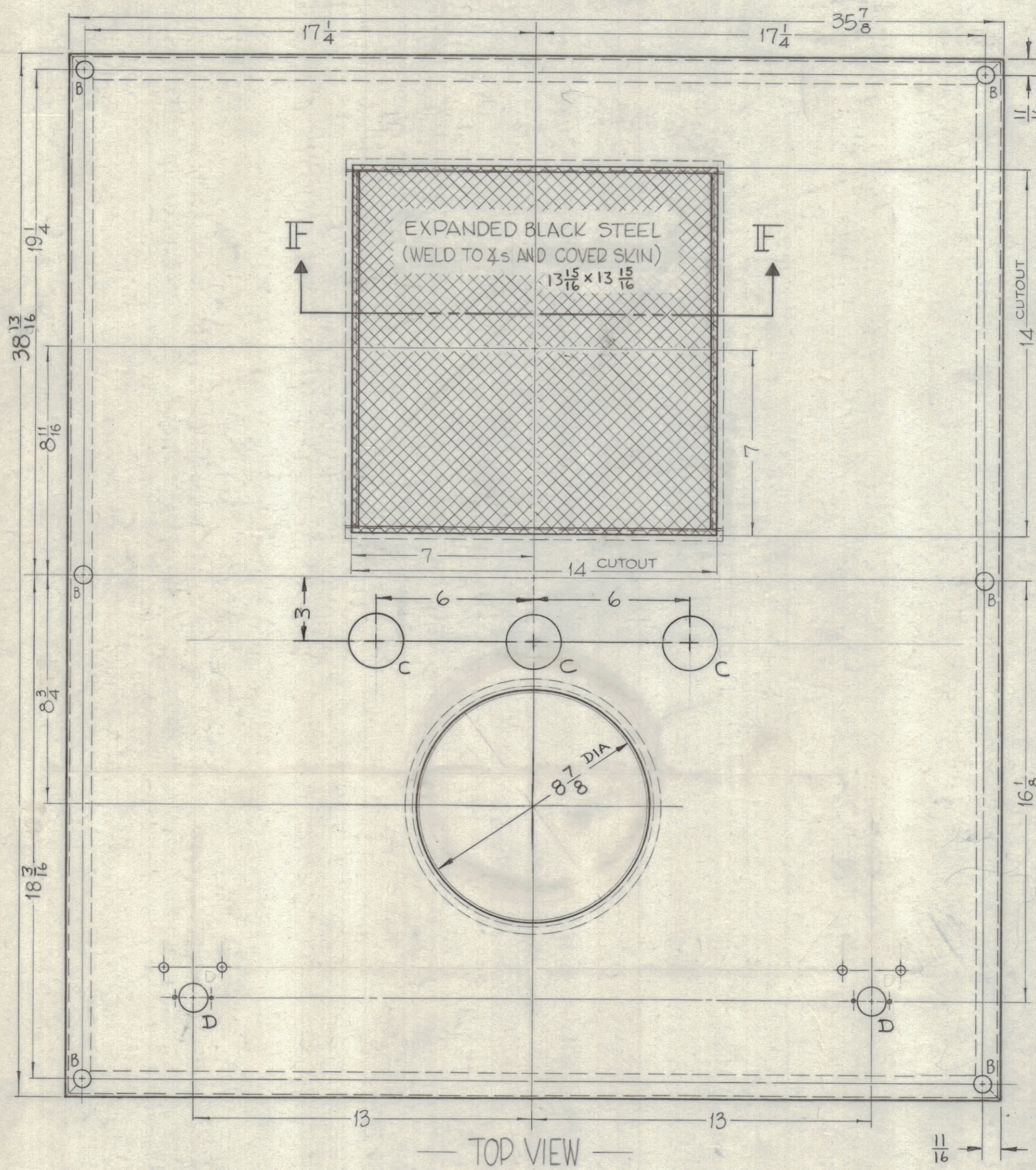


**HOLES**  
 A-3/8 DIA. 6REQ.  
 B-11/16 DIA. 6REQ.  
 C-2 1/2 DIA. 3REQ.



REVISIONS					
ZONE	SYM	DESCRIPTION	DATE	E.M.N. NO.	APPD
		ORIGINAL RELEASE FOR PRODUCTION	4/15/69		J.D.



**FINISHING NOTES**  
 S-371 - STEEL DEGREASING.  
 S-114 - ZINC CHROMATE PRIMED.  
 S-220 - SMOOTH, BLUE GRAY ENAMEL, OR PRIME AND PAINT TO CUSTOMERS SPECIFICATIONS.

**NOTES**

1	GPT-200K	AP-109
Q'TY./UNIT	MODEL USED ON	ASS'Y. NO.
SCALE	CODE	

THE CONTENTS OF THIS DRAWING ARE THE EXCLUSIVE PROPERTY OF THE TECHNICAL MATERIEL CORP. ITS UNAUTHORIZED USE OR REPRODUCTION IN WHOLE OR IN PART IS STRICTLY FORBIDDEN.

REQ'D.	ITEM	PART NUMBER	DESCRIPTION	SYMBOL
F. BUDETTI LIST OF MATERIAL				
MATERIAL		16 GAUGE, STEEL	THE TECHNICAL MATERIEL CORP. MAMARONECK, NEW YORK	
FINISH		SEE NOTES	TITLE COVER, TOP	
DRAWN		John C Biele	DATE 2-18-63	FINAL APPROVAL [Signature]
CHECKED		[Signature]	DATE 4/15/69	DATE 5/15/69
ELECT. DES.			DATE	MS-3162
MECH. DES.		[Signature]	DATE 4/15/69	REV. LTR.