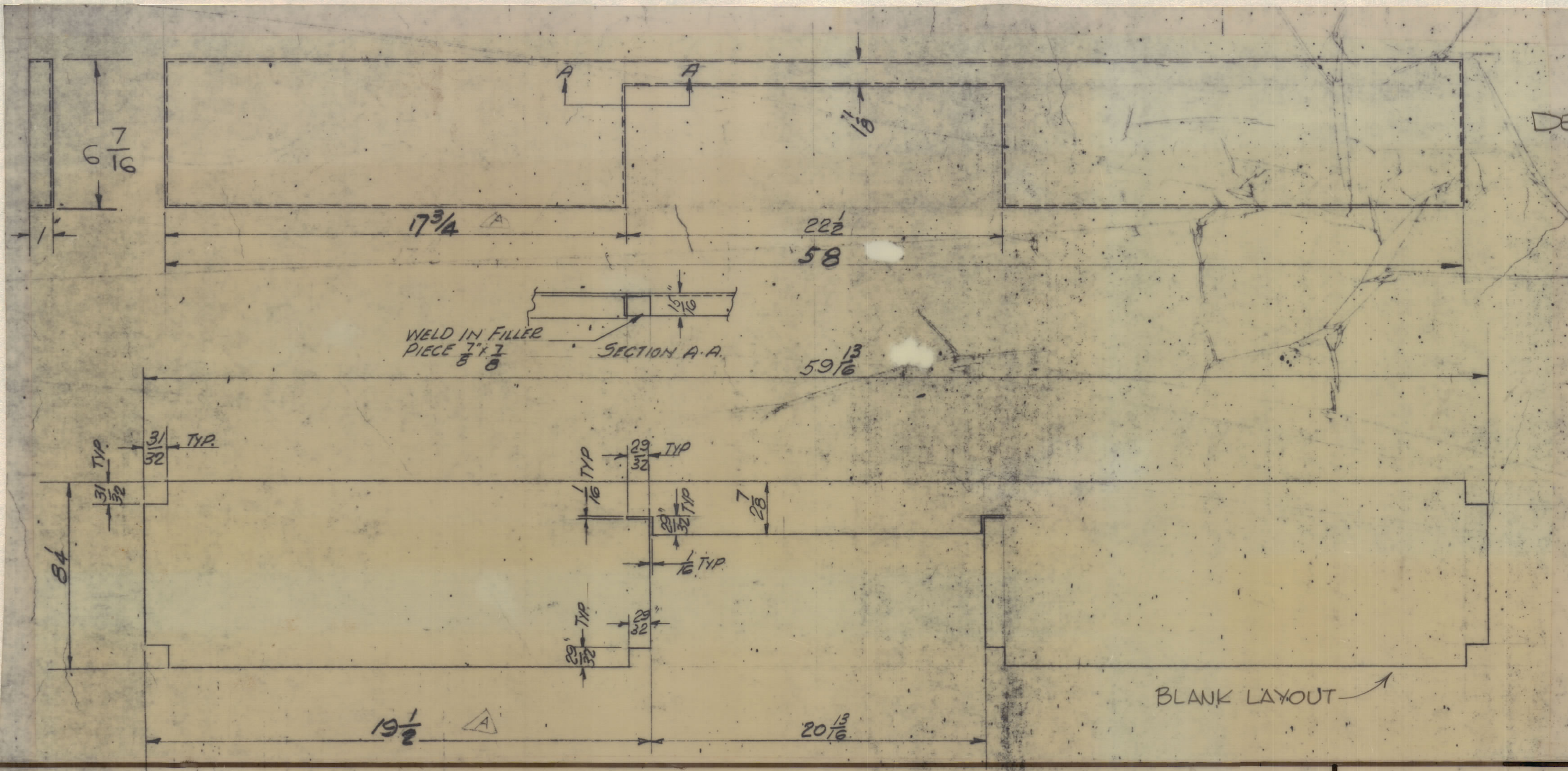
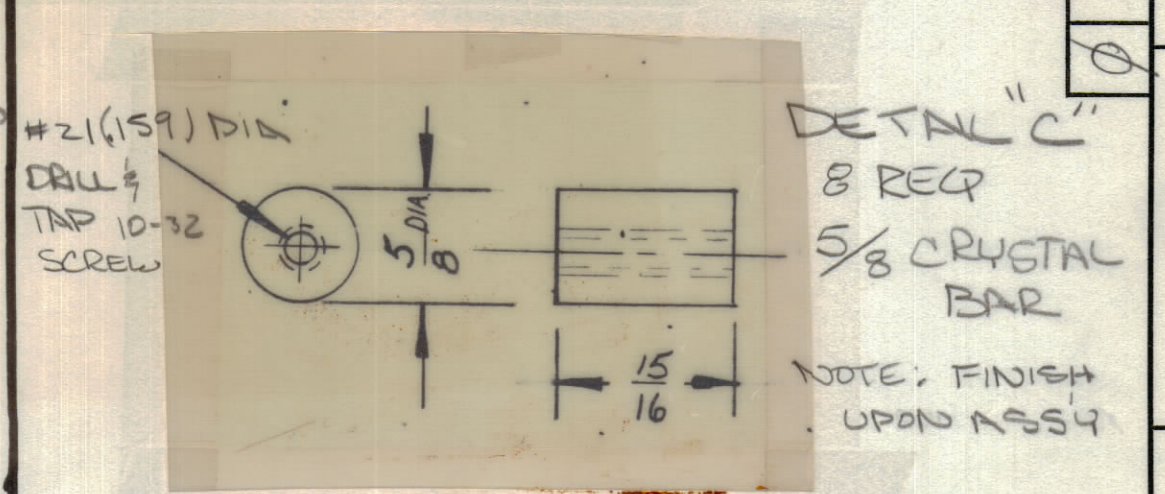
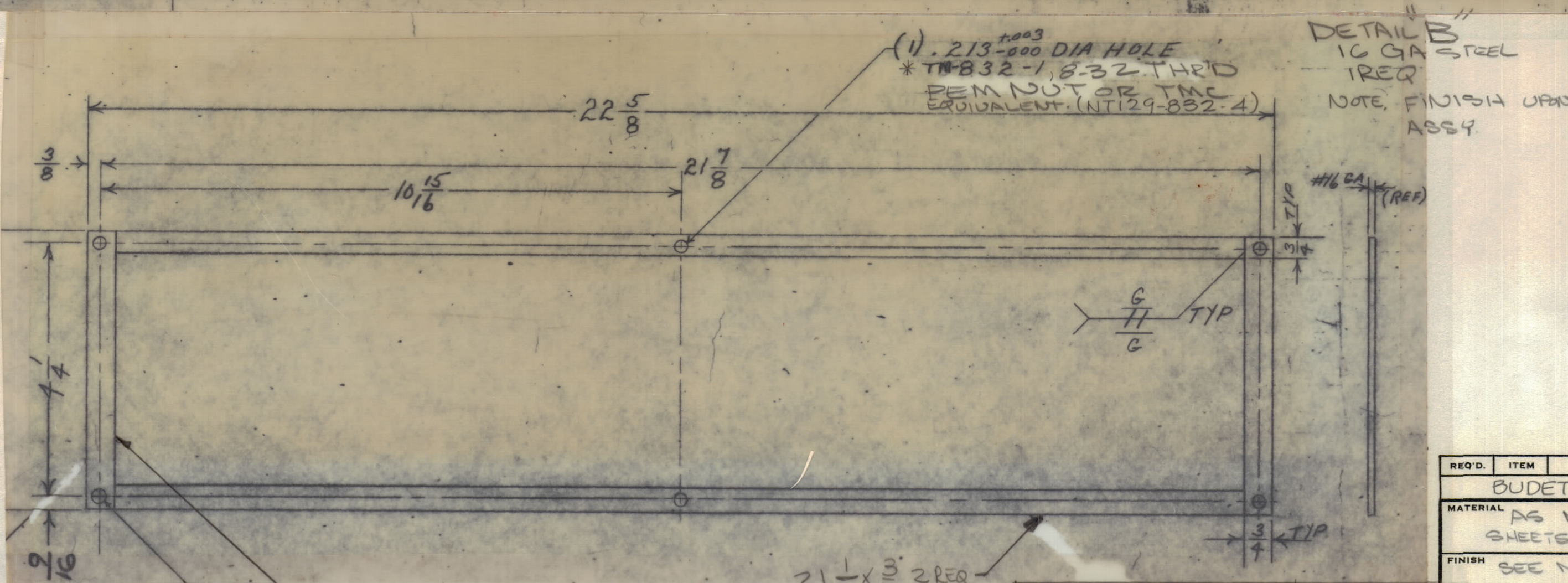


ZONE		SYM	DESCRIPTION	DATE	E.M.N. NO.	DRAFT	CHKD	APPD
		Ø	ORIGINAL RELEASE FOR PRODUCTION	12/1/65	Ø			



DETAIL "A"
1 REQ
16 GA STEEL
NOTE: FINISH UPON ASSEMBLY



187 DIA CLEARANCE HOLE
5 3/8 x 3/4 2 REQ
21 1/8 x 3/4 2 REQ
* MFG PT. NO.

NOTES

Q'TY./UNIT	MODEL USED ON	ASS'Y. NO.
1	TER-100K	
SCALE	CODE	
DO NOT SCALE	S401-189	

UNLESS OTHERWISE SPECIFIED DIMENSIONS ARE IN INCHES AND INCLUDE CHEMICALLY APPLIED OR PLATED FINISHES		DRAWN: [Signature]		DATE: 9-13-65	
DECIMALS: .X ± .05, .XX ± .01, .XXX ± .005		CHECKED: [Signature]		DATE: 10/6/65	
FRACTIONS: ± 1/64, ANGLES: ± 0° 30'		ELECT. DES.:		DATE:	
TOLERANCES:		MECH. DES.:		DATE:	

REQ'D.	ITEM	PART NUMBER	DESCRIPTION	SYMBOL
BUDETTI LIST OF MATERIAL				
MATERIAL			THE TECHNICAL MATERIEL CORP. MAMARONECK, NEW YORK	
AS NOTED SHEETS 1 & 2			TITLE: PANEL FRONT TOP DETAILS A, B, C	
FINISH			DRAWN: [Signature]	
SEE NOTE SHEET 1			DATE: 9-13-65	
UNLESS OTHERWISE SPECIFIED DIMENSIONS ARE IN INCHES AND INCLUDE CHEMICALLY APPLIED OR PLATED FINISHES			DATE: 10/6/65	
DECIMALS: .X ± .05, .XX ± .01, .XXX ± .005			DATE:	
FRACTIONS: ± 1/64, ANGLES: ± 0° 30'			DATE:	
TOLERANCES:			DATE:	

MS3146

MS-3146

MS3146
SHEET 2 OF 2
REV. LTR.