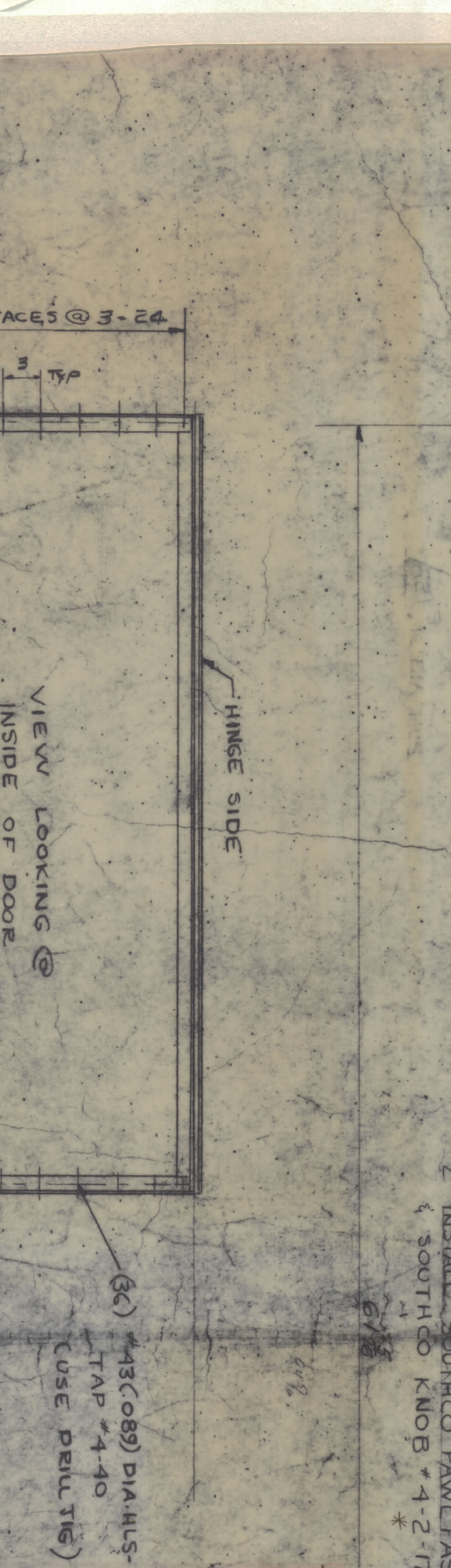
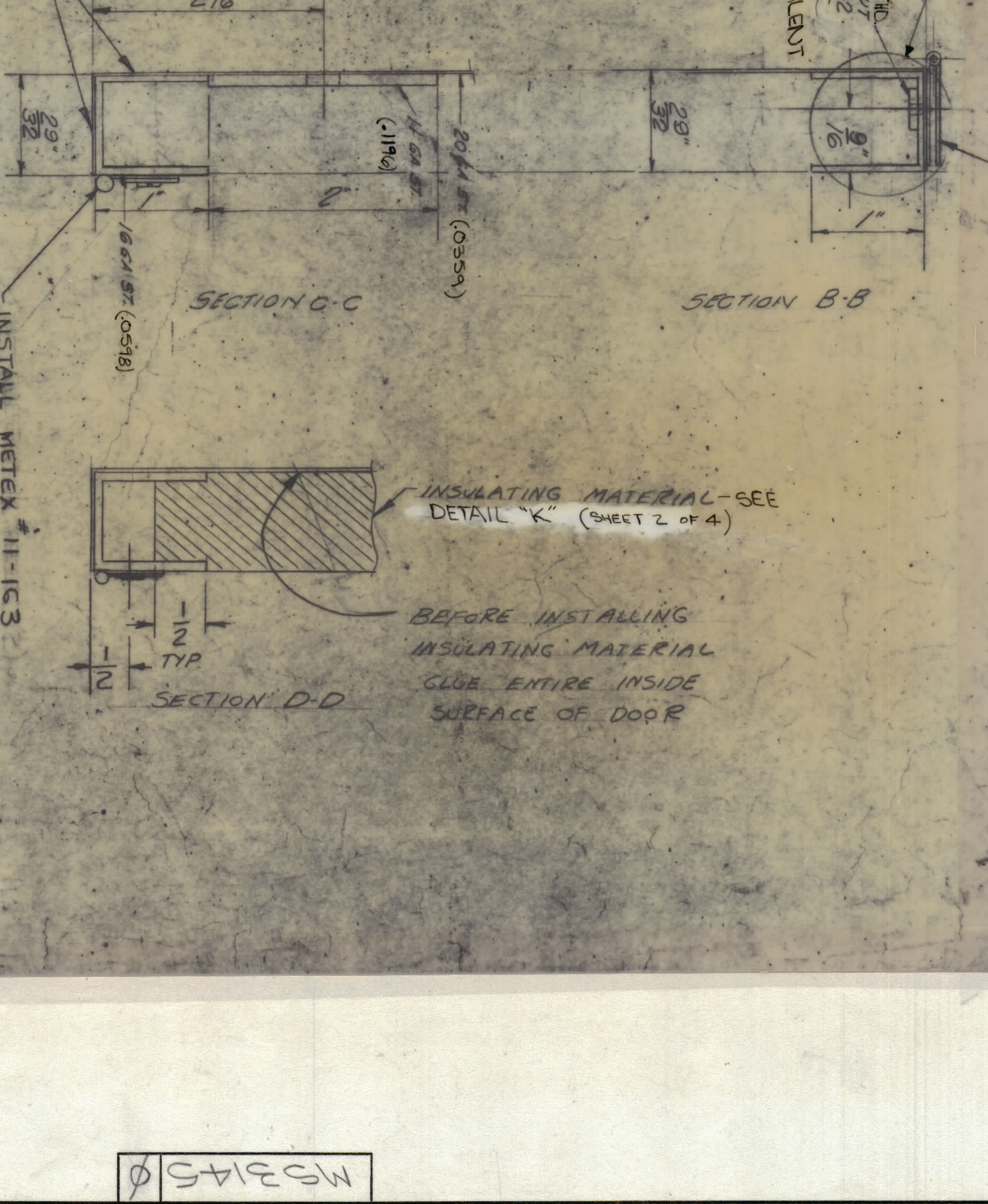
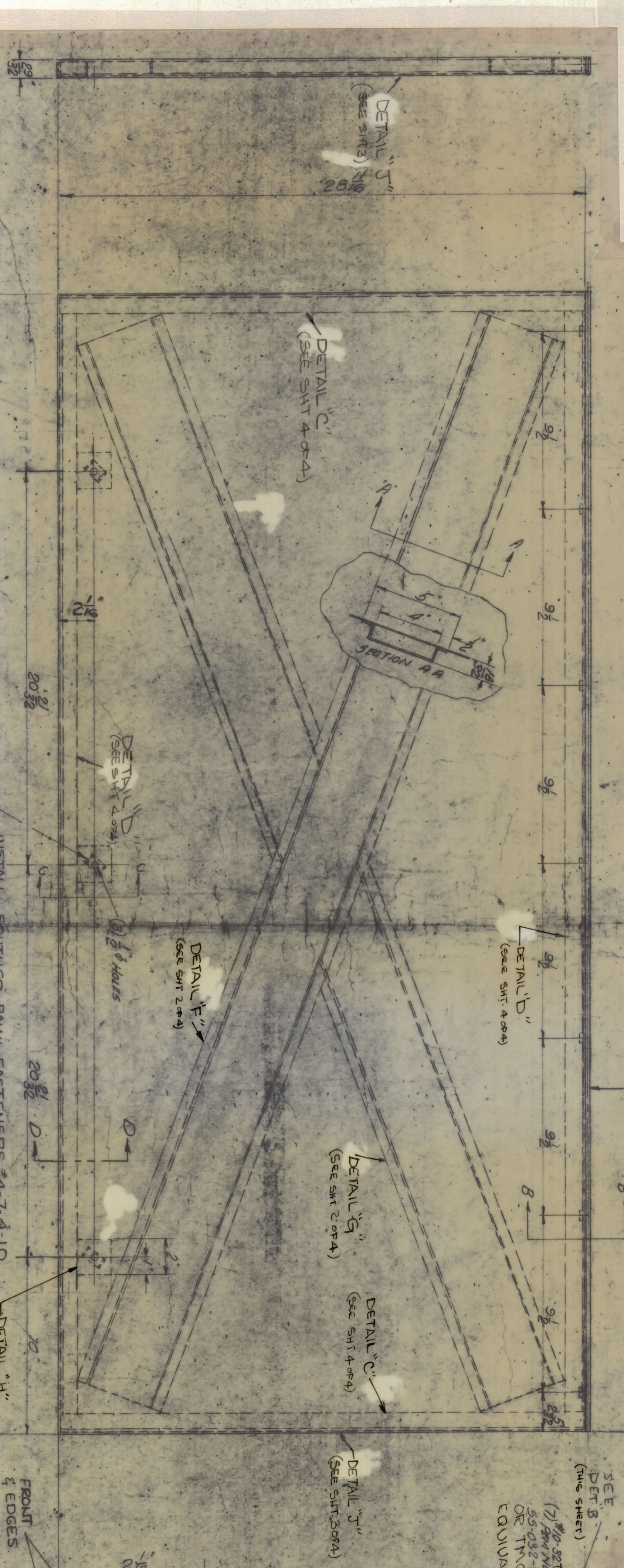
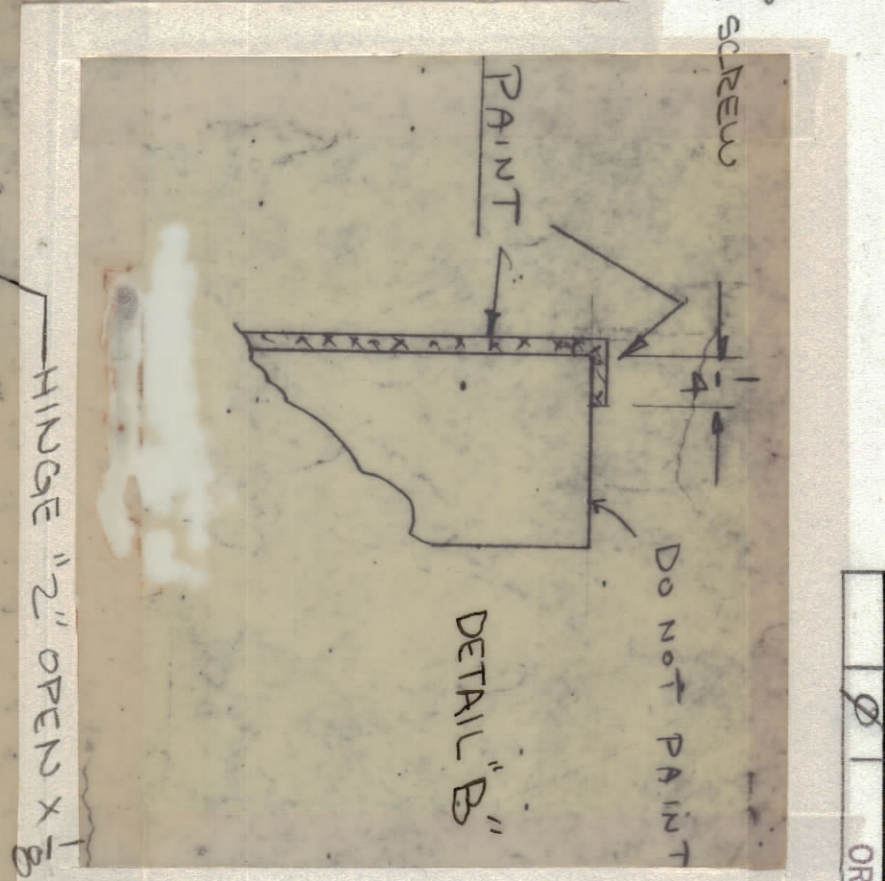
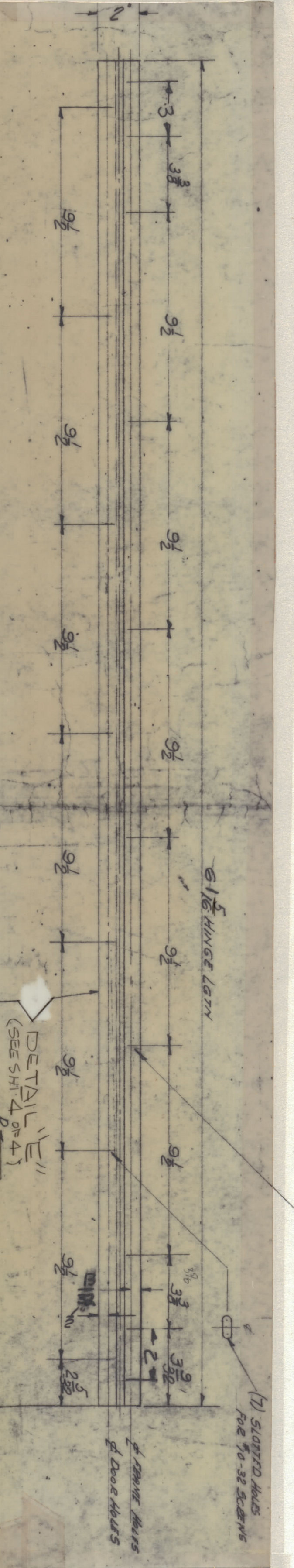
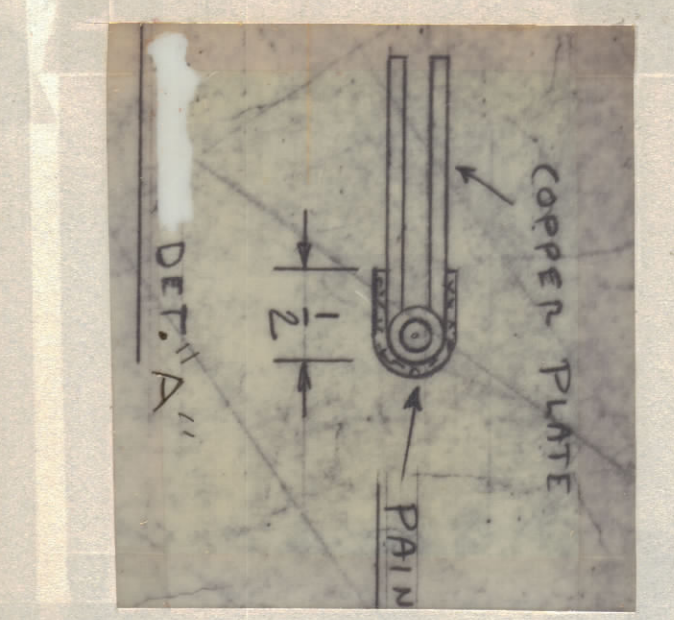


ZONE	REV.	DESCRIPTION	DATE	DRAWN	CHECK	APPD.
		ORIGINAL RELEASE FOR PRODUCTION	7/6/45			



- UNLESS OTHERWISE SPECIFIED:
1. CONSTRUCTION TO GA STEEL
 2. WELD ALL JOINTS TO BE WELDED
 3. ALL WELD JOINTS TO BE USED OUT PRIOR TO WELDING
 4. WELDING TO BE PER MIL-T-5012, TUNGSTEN INERT GAS PROCESS.
 5. ALL JOINTS SHOULD BE WELDED INSIDE AND OUTSIDE.
 6. ALL OUTSIDE WELDS TO BE GRIND FLUSH.
 7. OUTSIDE SURFACES TO BE REASONABLY FREE OF SCORCHES AND TOOL MARKS AND HAVE A SURFACE ROUGHNESS NOT TO EXCEED .005

FINISH NOTE:
 1. COPPER PLATE & WELD IRIDIUM ALL OVER.
 2. SILL & BUDE TEXTURED FRONT & EDGES OXY.
 3. DETAILS "L" & "M" FINISH WITH S404 IRIDIUM OXY.
 NOTES: METEX MUST BE IN 1 PIECE.

REQD.	ITEM	PART NUMBER	DESCRIPTION	SYMBOL
	BUDGET			
	MATERIAL		THE TECHNICAL MATERIAL CORP.	
			MAMAIRONCK, NEW YORK	
	FINISH		DOOR	
			RIGHT AND LEFT	
			DATE	
			DATE	
			DATE	
			DATE	

* MFG. PT. NO.
 NOTES
 4

NO.	DESCRIPTION	DATE	BY
1			
2			
3			
4			
5			
6			
7			
8			
9			
10			
11			