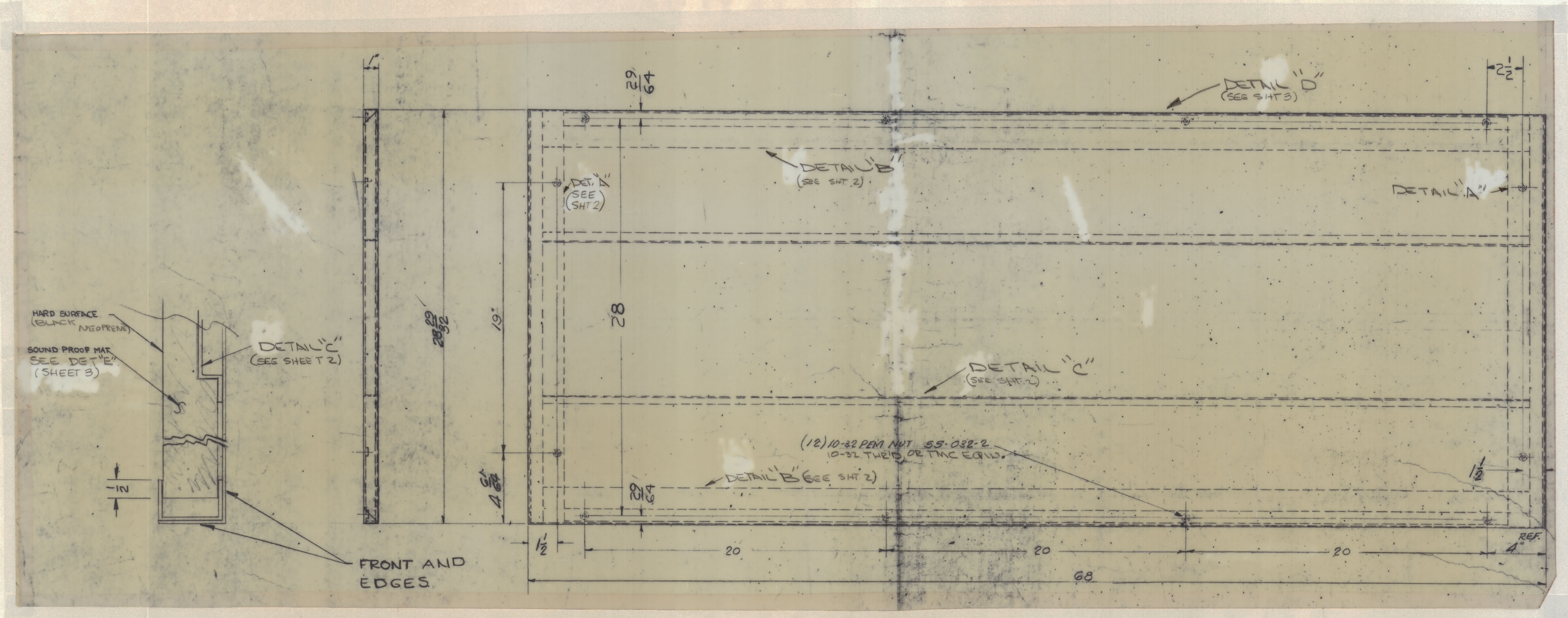


REVISIONS						
ZONE	SYM	DESCRIPTION	DATE	E.M.N. NO.	DRAFT	CHKD
		ORIGINAL RELEASE FOR PRODUCTION	12/65			



- UNLESS OTHERWISE SPECIFIED
- CONSTRUCTION STEEL
 - MOUNT ALL INSERTS AFTER FINISHING.
 - ALL WELD JOINTS TO BE VEE'D OUT PRIOR TO WELDING.
 - WELDING TO BE PER MIL-T-5021C, TUNGSTEN INERT GAS PROCESS.
 - ALL JOINTS SHOULD BE WELDED INSIDE AND OUTSIDE.
 - ALL OUTSIDE WELDS TO BE GROUND FLUSH.
 - OUTSIDE SURFACES TO BE REASONABLY FREE OF SCRATCHES AND TOOL MARKS AND HAVE A SURFACE ROUGHNESS NOT TO EXCEED .125

- FINISH NOTE:
- COPPER PLATE & CLEAR IRIDITE WALL OVER.
 - SL14 & BLUE TEXTURED FRONT AND EDGES ONLY.

UNLESS OTHERWISE SPECIFIED
DIMENSIONS ARE IN INCHES AND INCLUDE
CHEMICALLY APPLIED OR PLATED FINISHES

DECIMALS	FRACTIONS
.1 ± .01	± 1/64
.05 ± .005	± 1/32
	ANGLES ± 0° 30'

SCALE: DO NOT SCALE

MODEL USED ON: 5401-189

ASSY. NO.:

THE CONTENTS OF THIS DRAWING ARE THE EXCLUSIVE PROPERTY OF THE TECHNICAL MATERIEL CORP. ITS UNAUTHORIZED USE OR REPRODUCTION IN WHOLE OR IN PART IS STRICTLY FORBIDDEN.

REQ'D.	ITEM	PART NUMBER	DESCRIPTION	SYMBOL
BUDETTI LIST OF MATERIAL				
MATERIAL			THE TECHNICAL MATERIEL CORP.	
AS NOTED SHEETS 1, 2 & 3			MAMARONECK, NEW YORK	
FINISH			TITLE	
SEE NOTE (THIS SHEET)			REAR PANEL	
UNLESS OTHERWISE SPECIFIED			DRAWN	
DIMENSIONS ARE IN INCHES AND INCLUDE			E.A.N.Z.A.	
CHEMICALLY APPLIED OR PLATED FINISHES			DATE	
			12/65	
			CHECKED	
			DATE	
			12/65	
			ELECT. DES.	
			DATE	
			12/65	
			MECH. DES.	
			DATE	
			12/65	
			REV. LTR.	
			DATE	
			12/65	
			SHEET 1 OF 3	
			REV. LTR.	
			DATE	
			12/65	

NOTES

MS3144