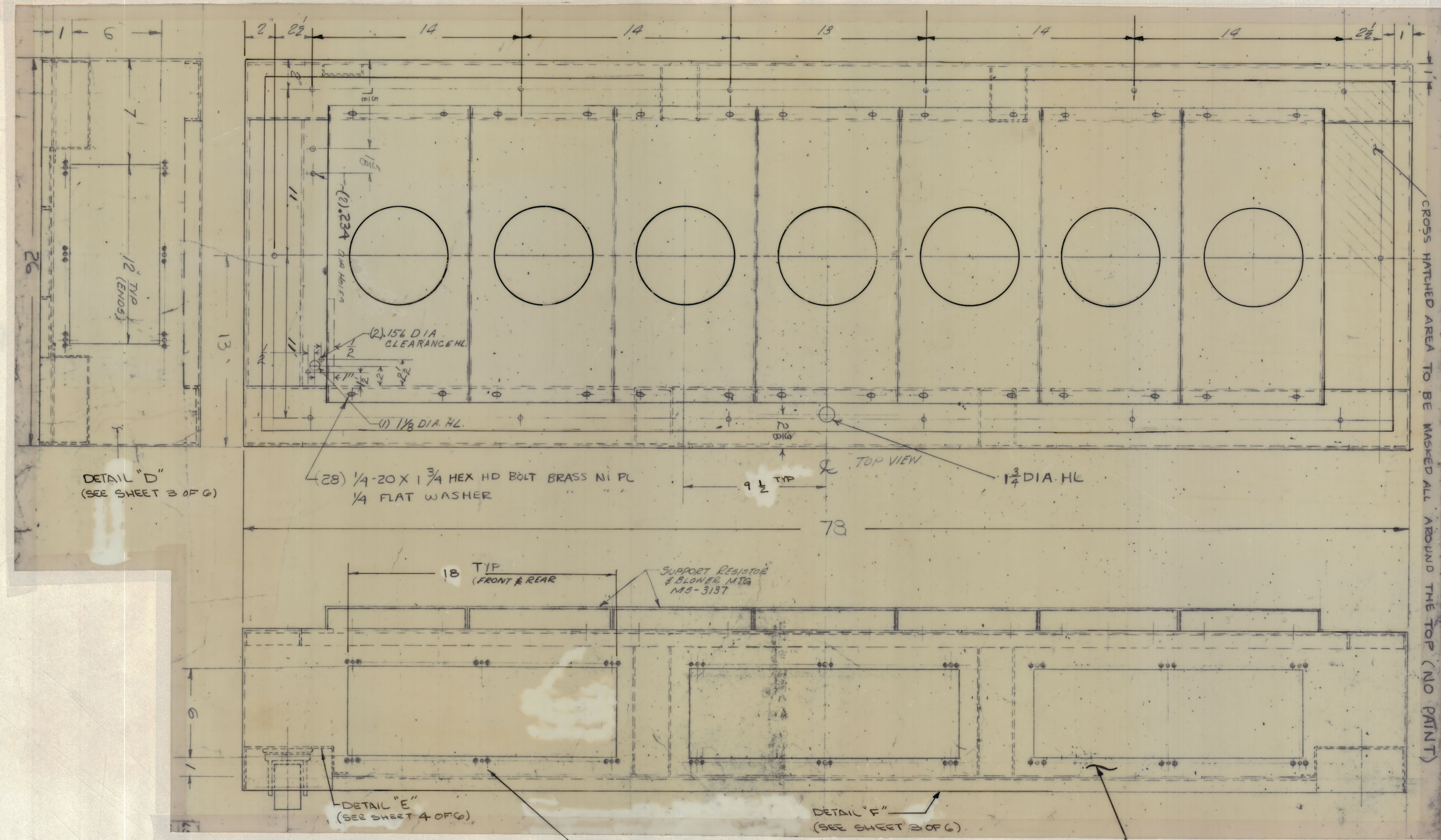


ZONE		SYM		REVISIONS		DATE	E.M.N. NO.	DRAFT	CHKD	APPD
				ORIGINAL RELEASE FOR PRODUCTION		12/1/65				



DETAIL "D"
(SEE SHEET 3 OF 6)

(28) 1/4-20 X 1 3/4 HEX HD BOLT BRASS NI PL
1/4 FLAT WASHER

SUPPORT RESISTOR
BLOWER MTR
MS-3137

DETAIL "E"
(SEE SHEET 4 OF 6)

DETAIL "F"
(SEE SHEET 3 OF 6)

INSTALL TMC NO. FS102-1 (48 REQ)
(96) # 3-48 X 3/8 LG FHMS BRASS NI PL
(96) # 3-48 HEX NUT
(96) # 3 LOCKWASHER
(96) # 3 FLAT WASHER

DETAIL "K"
(SEE SHEET 6 OF 6)

CROSS HATCHED AREA TO BE MASKED ALL AROUND THE TOP (NO PAINT)

NOTE: FINISH APPROPRIATE ASSEMBLY

MS3141

AS NOTED	TER-100K	MODEL USED ON	ASS'Y. NO.
SCALE	DO NOT SCALE	CODE	S401-189
THE CONTENTS OF THIS DRAWING ARE THE EXCLUSIVE PROPERTY OF THE TECHNICAL MATERIEL CORP. ITS UNAUTHORIZED USE OR REPRODUCTION IN WHOLE OR IN PART IS STRICTLY FORBIDDEN.			

NOTES

REQ'D.	ITEM	PART NUMBER	DESCRIPTION	SYMBOL
BUDETTI LIST OF MATERIAL				
MATERIAL		THE TECHNICAL MATERIEL CORP. MAMARONECK, NEW YORK		
FINISH		BASE ASSY		
UNLESS OTHERWISE SPECIFIED DIMENSIONS ARE IN INCHES AND INCLUDE CHEMICALLY APPLIED OR PLATED FINISHES		DRAWN	DATE	FINAL APPROVAL
TOLERANCES		CHECKED	DATE	
DECIMALS ±.05		ELECT. DES.	DATE	
XX ±.01		MECH. DES.	DATE	
XXX ±.005			DATE	
			DATE	
			DATE	

MS3141