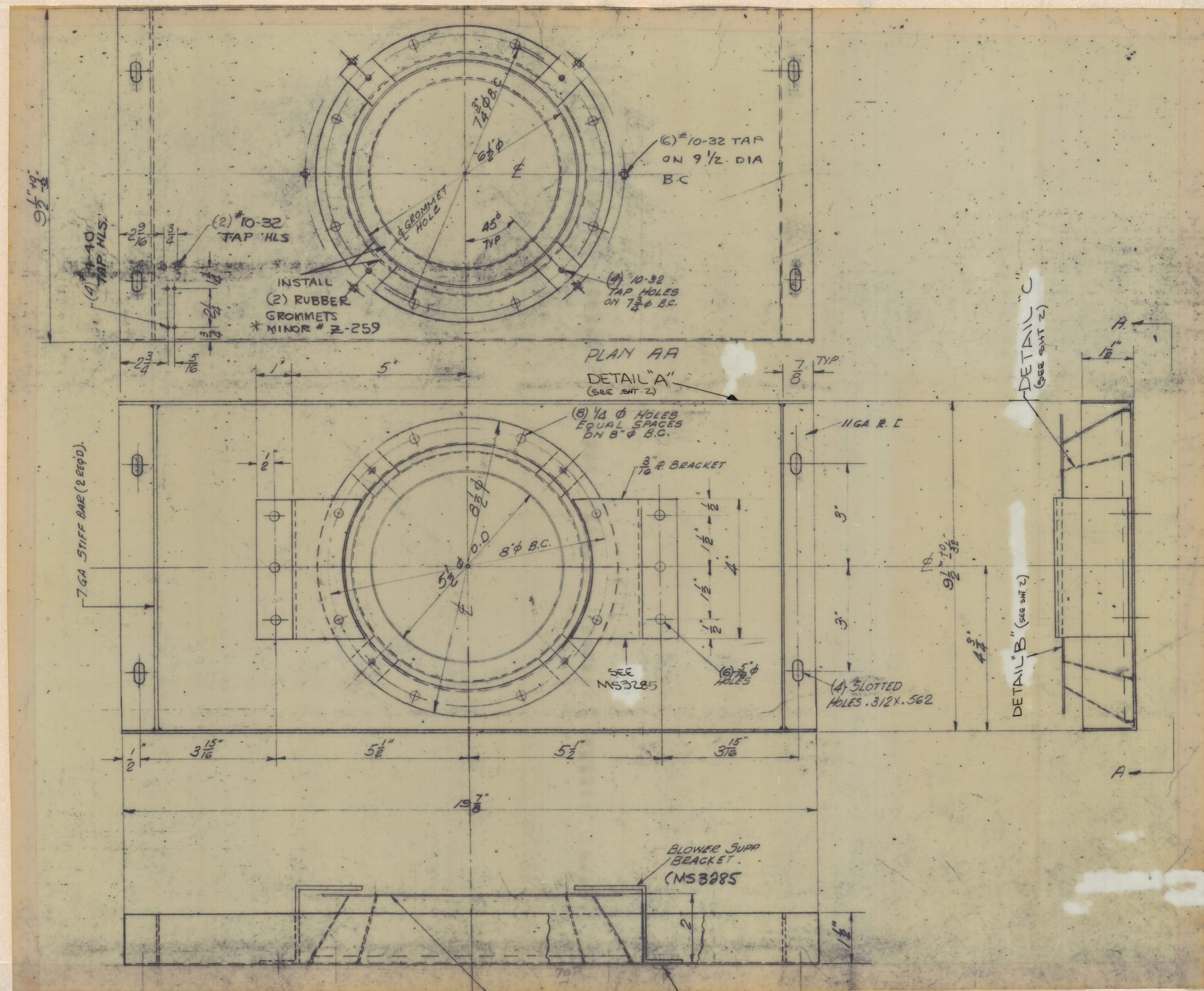


REVISIONS						
ZONE	SYM	DESCRIPTION	DATE	E.M.N. NO.	DRAFT	CHKD
	Ø	ORIGINAL RELEASE FOR PRODUCTION	12/1/65	Ø		JLW



UNLESS OTHERWISE SPECIFIED

1. CONSTRUCTION STEEL
2. MOUNT ALL INSERTS AFTER FINISHING.
3. ALL WELD JOINTS TO BE VEE'D OUT PRIOR TO WELDING.
4. WELDING TO BE PER MIL-T-5021C, TUNGSTEN INERT GAS PROCESS.
5. ALL JOINTS SHOULD BE WELDED INSIDE AND OUTSIDE.
6. ALL OUTSIDE WELDS TO BE GROUND FLUSH.
7. OUTSIDE SURFACES TO BE REASONABLY FREE OF SCRATCHES AND TOOL MARKS AND HAVE A SURFACE ROUGHNESS NOT TO EXCEED  $\sqrt{325}$

FINISH NOTES: COPPER FLASH AND CLEAR IRIDITE.5425

- ASSEMBLY MS3285 WITH
- (6) SCBP2520BN12
  - (6) NTH2520BN14
  - (6) FW25HBN
  - (6) LWS25MRN

\* MFG PT NO.

NOTES

AS NOTED	TER-100K
QTY/UNIT	MODEL USED ON
SCALE	CODE
DONOT SCALE	5401-189

REQ'D.	ITEM	PART NUMBER	DESCRIPTION	SYMBOL
BUDETTI LIST OF MATERIAL				
MATERIAL		THE TECHNICAL MATERIEL CORP.		
AS NOTED		MAMARONECK, NEW YORK		
SHEETS 1 AND 2		TITLE SUPPORT RESISTOR MOUNTING		
FINISH		SEE NOTE THIS SHT.		
DRAWN	DATE	FINAL APPROVAL	DATE	
EMJZA	9/17/65	W.H. King	12/1/65	
CHECKED	DATE			
ØB	10/6/65			
ELECT. DES.	DATE			
MECH. DES.	DATE			

MS3137