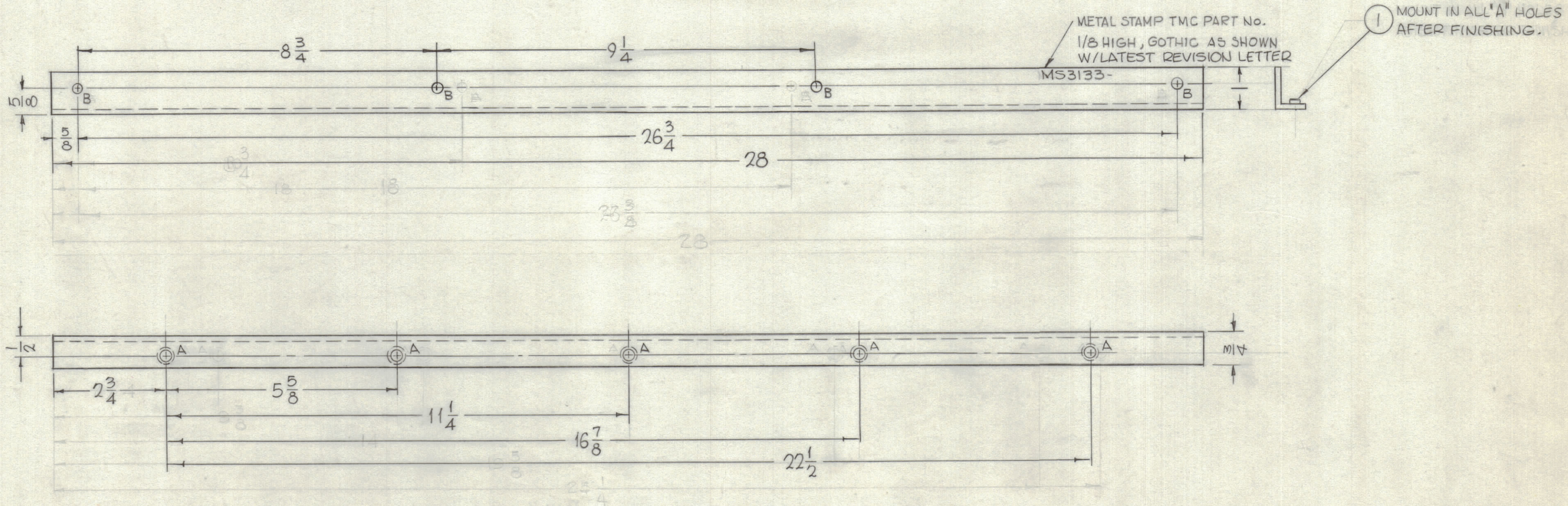


HOLE	DESCRIPTION	REQ'D
A	.250 -.253 DIA.	5
B	15/64 DIA.	4

REVISIONS						
ZONE	SYM	DESCRIPTION	DATE	E.M.N. NO.	DRAFT	CHKD
	X1	2 B HOLES ADDED, (MAT'L W/1/8 EXT. ALUM. Z)	11-11-65	X1	MLB	
	Ø	ORIGINAL RELEASE FOR PRODUCTION	11-16-65	Ø	X.V.V.	



UNLESS OTHERWISE SPECIFIED:  
 ALL ANGULAR BENDS 90 DEGREES  
 REMOVE ALL BURRS AND SHARP EDGES  
 MOUNT INSERTS AFTER FINISHING

NOTES

1	GPT-10KLF	
Q'TY./UNIT	MODEL USED ON	ASS'Y. NO.
SCALE 1/2	CODE A	
THE CONTENTS OF THIS DRAWING ARE THE EXCLUSIVE PROPERTY OF THE TECHNICAL MATERIEL CORP. ITS UNAUTHORIZED USE OR REPRODUCTION IN WHOLE OR IN PART IS STRICTLY FORBIDDEN.		

5	1	NT1291032-6	NUT, ROUND, SWAGE TYPE	A
REQ'D.	ITEM	PART NUMBER	DESCRIPTION	SYMBOL
O. POSE LIST OF MATERIAL				
MATERIAL 1" X 3/4 X 1/8 Z EXTRUDED ALUMINUM, 6063-T5			THE TECHNICAL MATERIEL CORP. MAMARONECK, NEW YORK	
FINISH 3404 YEL. IRIDITE			TITLE SUPPORT, FRONT PANEL, BOTTOM IPA DRIVER DRAWER	
UNLESS OTHERWISE SPECIFIED DIMENSIONS ARE IN INCHES AND INCLUDE CHEMICALLY APPLIED OR PLATED FINISHES			DRAWN G.D.L.	DATE 3-29-63
DECIMALS .X ± .05 .XX ± .01 .XXX ± .005			CHECKED JCB	DATE 11/15/65
FRACTIONS ± 1/64 ANGLES ± 0° 30'			ELECT. DES.	DATE
TOLERANCES			MECH. DES.	DATE
			DATE	DATE
			SHEET	REV. LTR.

MS3133  
Ø