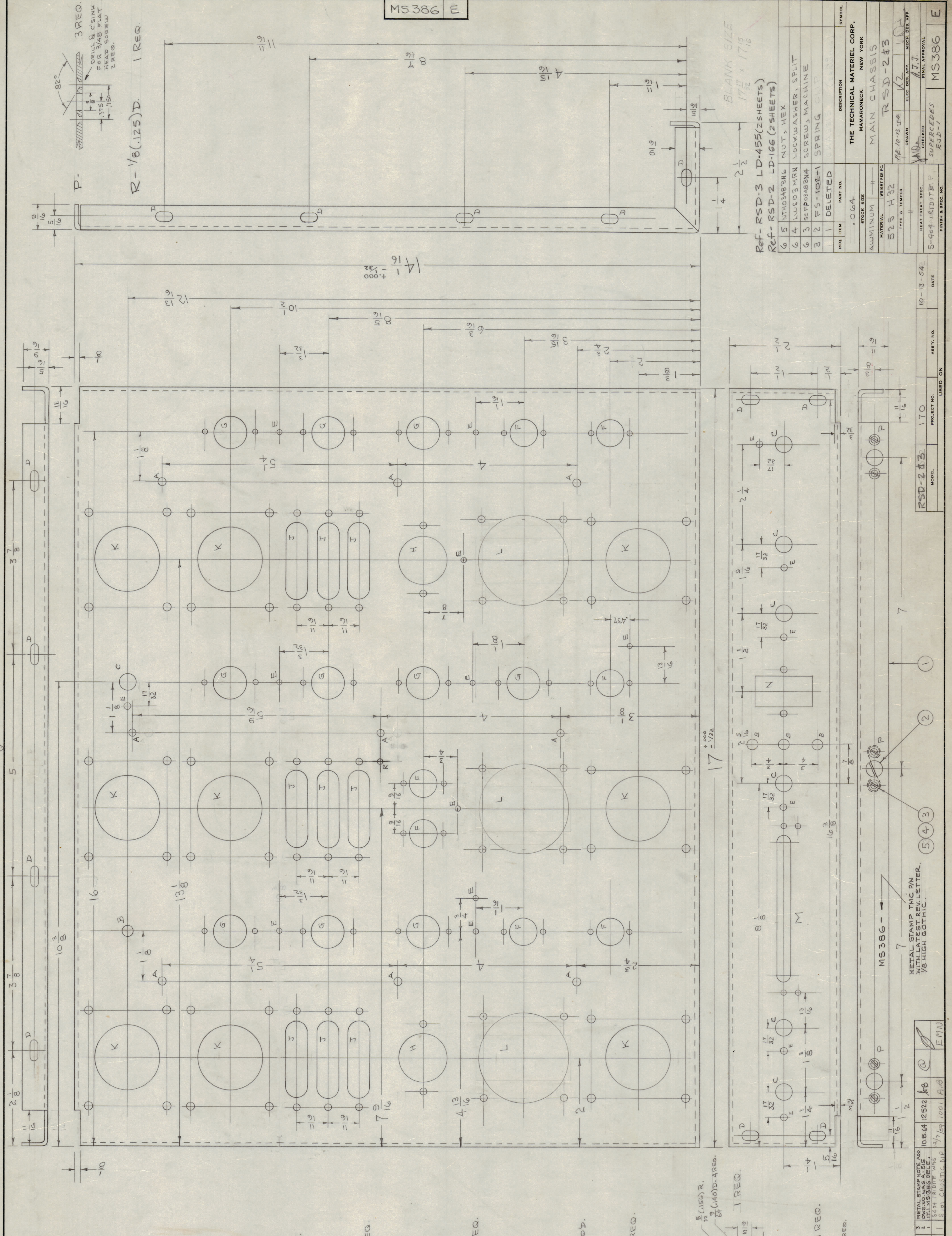
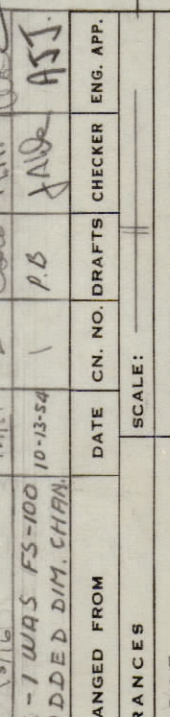
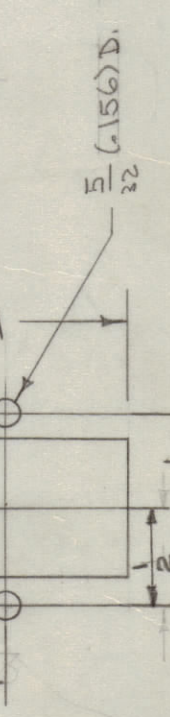
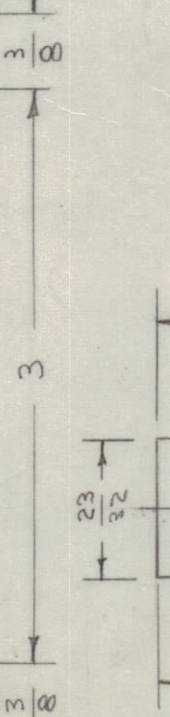
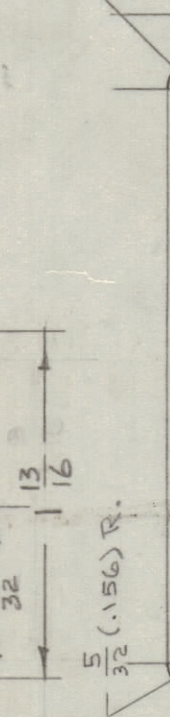
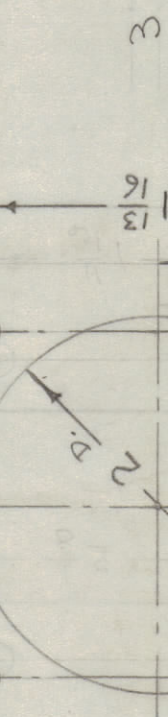
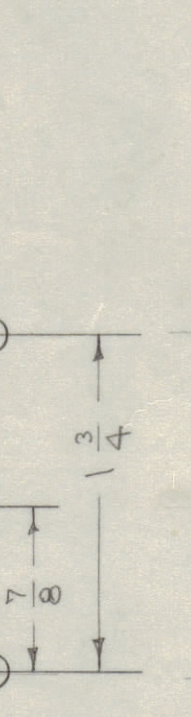
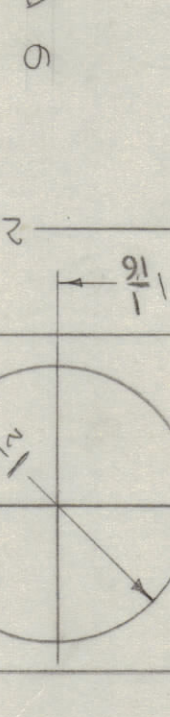
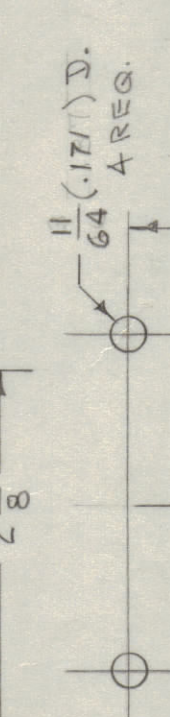
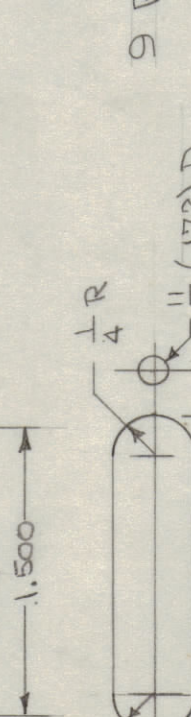
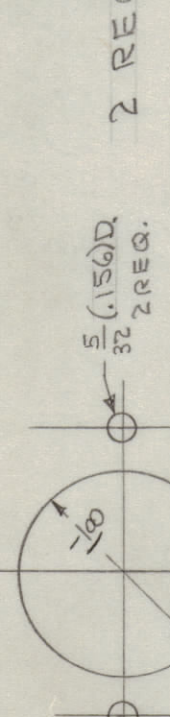
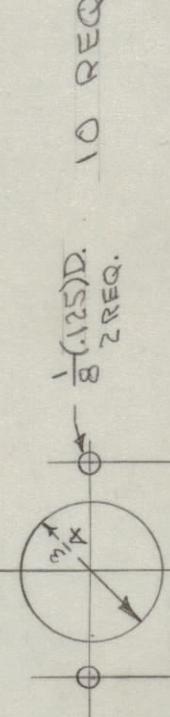
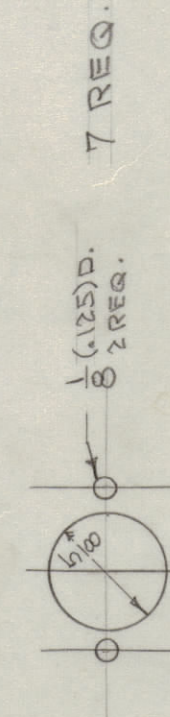


IT IS FOUND DESIRABLE TO CHANGE ANY TOLERANCE OR DIMENSION SHOWN ON THIS DRAWING NOTIFY THE PURCHASER PROMPTLY.
 MAXIMUM ALLOWABLE TOLERANCES HAVE BEEN DETERMINED AND DEVIATIONS WILL BE CAUSE FOR REJECTION.
 INDICATE ALL BURN AND SHARP EDGES

A- 11/64 (.171) D. 9 HOLES REQ.
 B- 11/64 (.265) D. 4 HOLE REQ.
 C- 3/8 (.375) D. 1 HOLE REQ.
 D- 13/64 X 13/32 SLOT 18 SLOTS REQ.
 E- 9/64 (.140) D. 16 HOLES REQ.



MS 386 E

Ref- RSD-3 LD-455 (25 SHEETS)
 Ref- RSD-2 LD-166 (2 SHEETS)

REQ. ITEM	PART NO.	DESCRIPTION	SYMBOL
5	INTHO348B6	NUT, HEX	
6	LW903MRN	LOCKWASHER, SPLIT	
6	SCFP0348B4	SCREWS, MACHINE	
3	FS-102-1	SPRING CLIP	
1	DELETED		

THE TECHNICAL MATERIAL CORP.
 MAMARONECK, NEW YORK

MAIN CHASSIS
 RSD-2-43

DATE: 10-13-54
 PROJECT NO.: 170
 MODEL: RSD-2-43
 ASSY. NO.:
 USED ON:

10-13-54 DATE
 170 PROJECT NO.
 RSD-2-43 MODEL
 MS 386 - 7
 METAL STAMP T.M.C. PIN
 WITH LATEST REV. LETTER,
 1/8 HIGH GOTHIC.

10-13-54 DATE
 170 PROJECT NO.
 RSD-2-43 MODEL
 MS 386 - 7
 METAL STAMP T.M.C. PIN
 WITH LATEST REV. LETTER,
 1/8 HIGH GOTHIC.

10-13-54 DATE
 170 PROJECT NO.
 RSD-2-43 MODEL
 MS 386 - 7
 METAL STAMP T.M.C. PIN
 WITH LATEST REV. LETTER,
 1/8 HIGH GOTHIC.