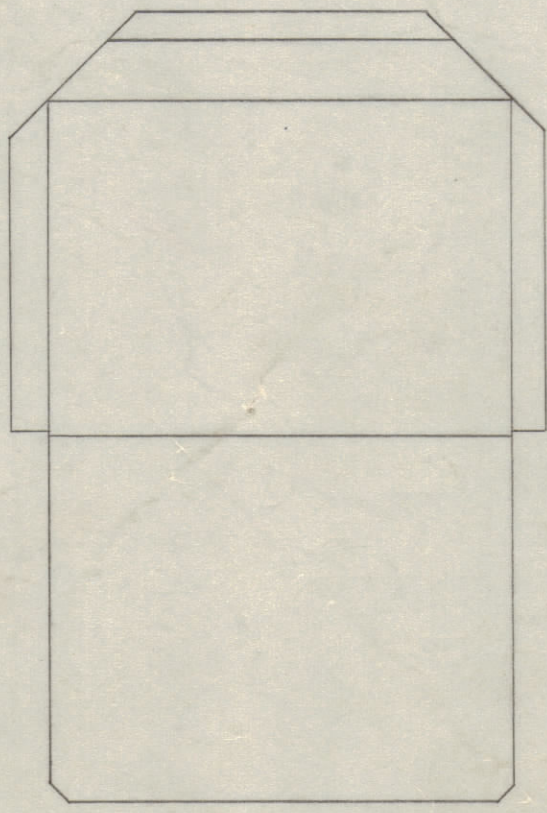
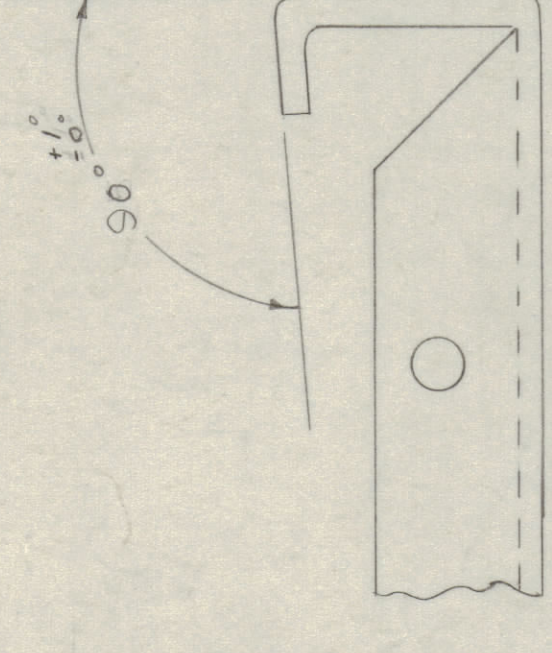
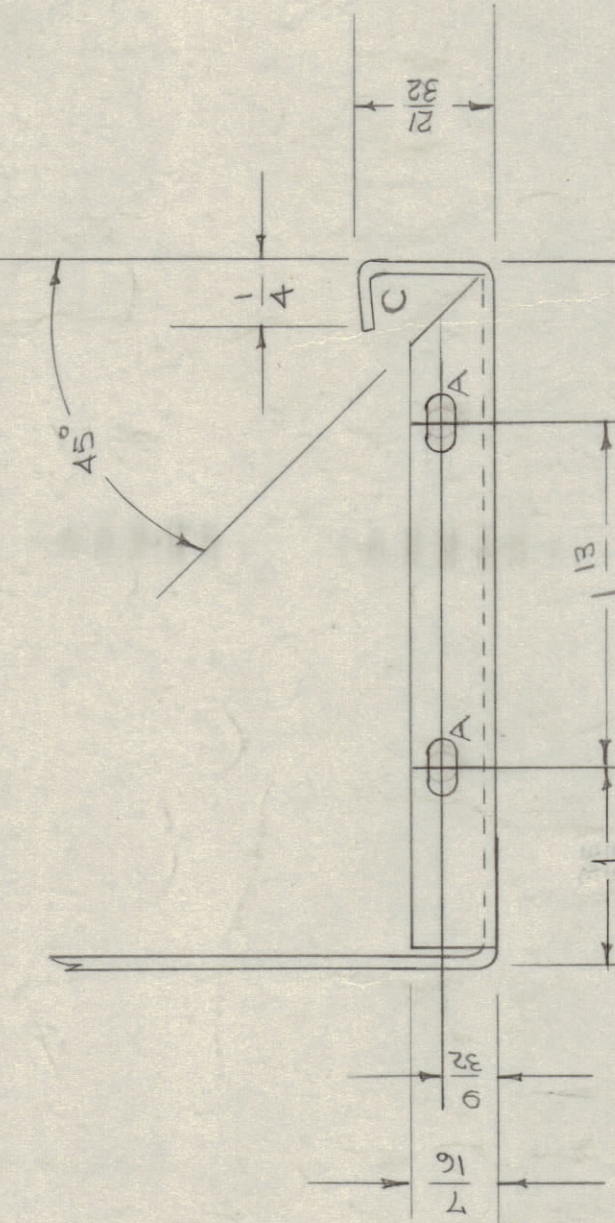


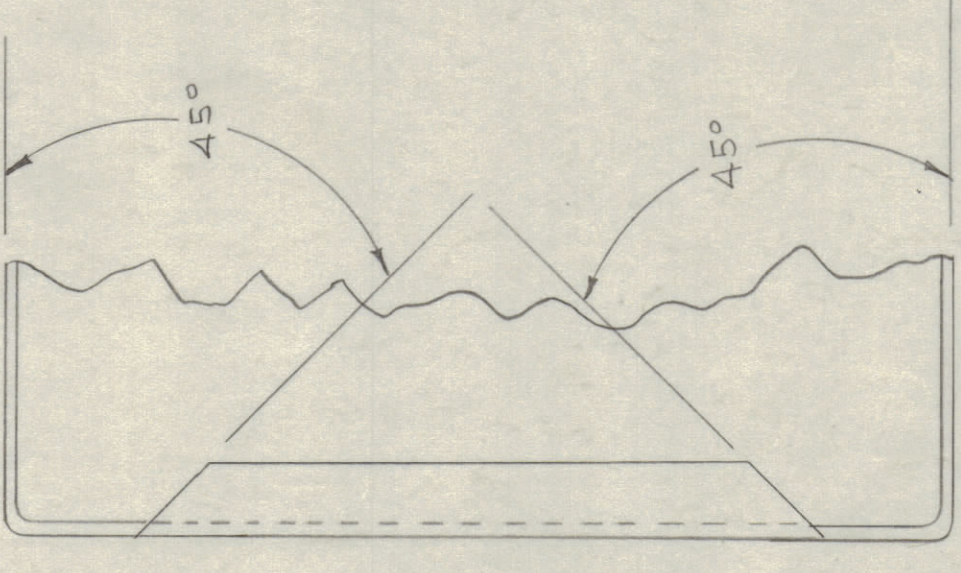
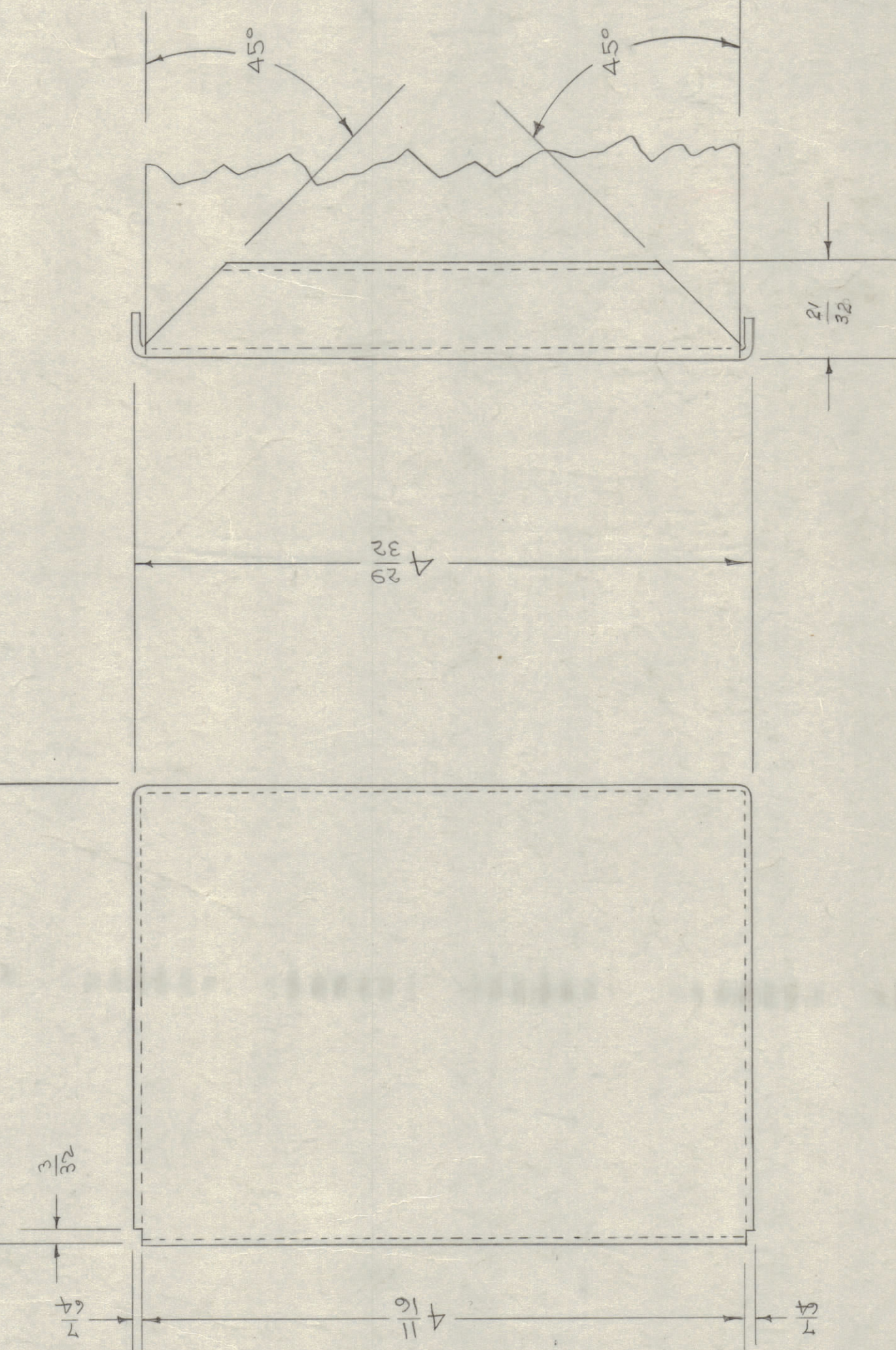
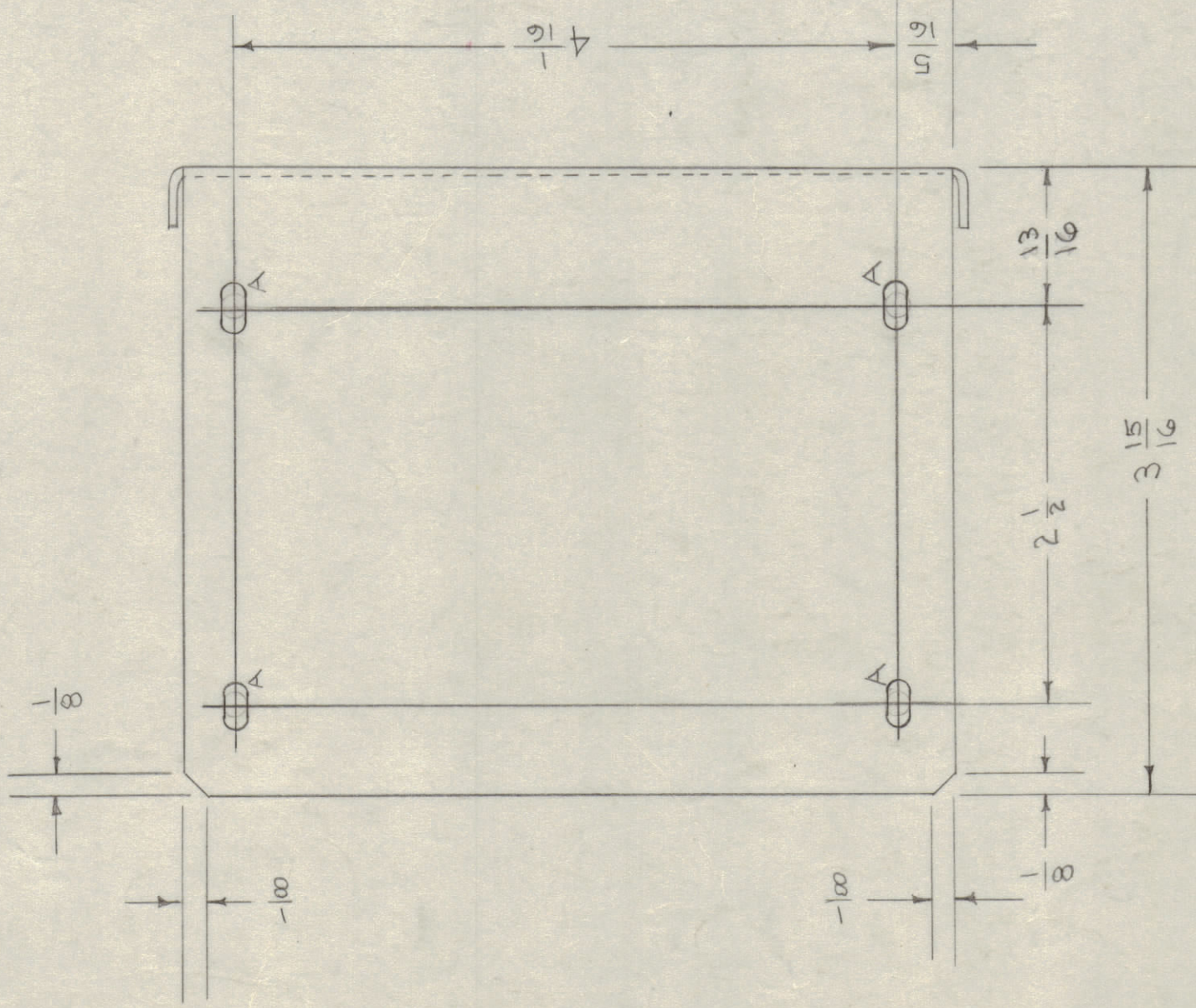
IT IS FOUND DESIRABLE TO OBTAIN AN ADVANCE ORDER FOR THE PURCHASER PROMPTLY.
MAXIMUM ALLOWABLE TOLERANCES HAVE BEEN DETERMINED TO BE AS SHOWN.
REMOVE ALL BURRS AND SHARP EDGES.



BLANK LAYOUT



ENLARGED DETAIL BEND C



BLANK SIZE
6 3/4 X 5 1/2

A - 9/64 X 9/32 - 8 SLOTS REQ.
ALL BENDS 90° EXCEPT AS SHOWN
ALL INSIDE RADII 1/16

NOTICE TO DESIGNERS RECEIVING THIS DRAWING
THE TECHNICAL MATERIEL CORPORATION claims
proprietary right in the material disclosed herein.
This drawing is issued in confidence for engineering
information only and may not be reproduced or used
to manufacture any part shown herein without per-
mission in writing from THE TECHNICAL MATERIEL CORPORA-
TION in New York. This obligation is mutual
assistance and is subject to recall at any time.

Property of
THE TECHNICAL MATERIEL CORPORATION
MAMARONECK, NEW YORK

REP: MS-340
MS-227-1

PRO. ITEM	PART NO.	DESCRIPTION	SYMBOL
.064		THE TECHNICAL MATERIEL CORP. MAMARONECK, NEW YORK	
ALUMINUM	#	COVER, XTAL OVEN	
3032 - H 32	WEIGHT PER C		
TYPE A TILDER	CD. MACH	KZ	ELEG. DES. APP.
		MS	MECH. DES. APP.
	HEAT TREAT. SPEC.	H.J.J.	FINAL APPROVAL
S-404 IRIDITE		MS-339	F
	FINISH & SPEC. NO.		

ISSUE ITEM	CHANGED FROM	DATE OR NO. OF REVISIONS	CHECKER	INC. APP.
F	1 1/2mm MS	12/25/54	W.S.	W.S.
E	1 1/2mm MS	1/16/55	W.S.	W.S.
D	1 1/2mm MS	4/24/54	W.S.	W.S.
C	1 1/2mm MS	3/15/54	W.S.	W.S.
B	1 1/2mm MS	1/15/54	W.S.	W.S.

SCALE: 1" = 1/2" (10X)
DRILL, PUNCH, COMMERCIAL STOCK
FILES AND MANUFACTURERS
OTHER TOLERANCES ARE NOT INCLUDED.

ISSUE ITEM	CHANGED FROM	DATE OR NO. OF REVISIONS	CHECKER	INC. APP.
1	MS-3	9-21-60	A.621	
2	FSS	7-20-55	A.600	
3	XFK	11-11-53		

PROJECT NO.	ASST. NO.	DATE