

IF IT IS FOUND DESIRABLE TO CHANGE ANY TOLERANCE OR OTHER DETAIL SPECIFIED ON THIS DRAWING NOTIFY THE PURCHASER PROMPTLY.

UNLESS OTHERWISE SPECIFIED DIMENSIONS ARE IN INCHES AND INCLUDE CHEMICALLY APPLIED OR PLATED FINISHES

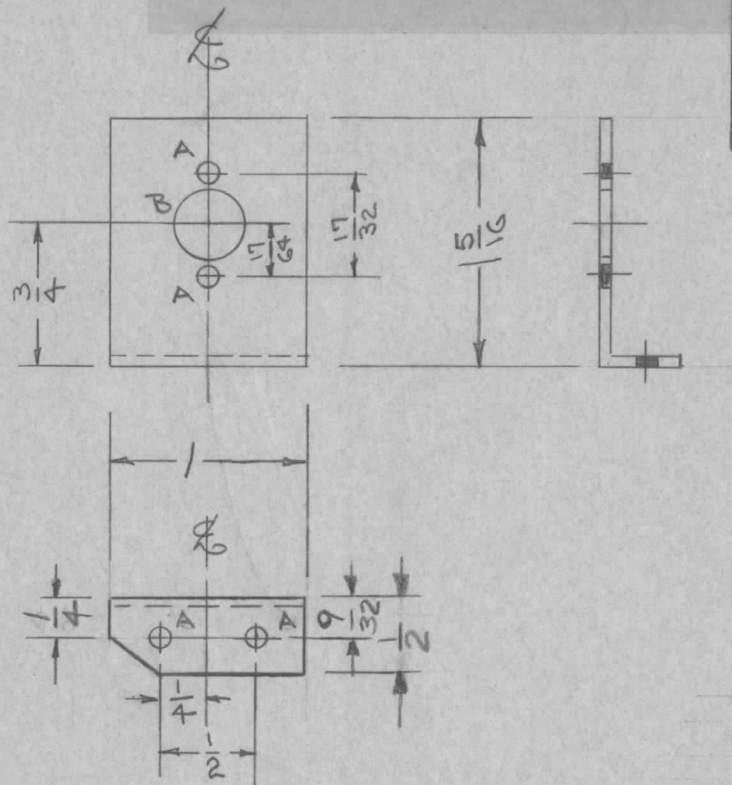
MS-309 E

MAXIMUM ALLOWABLE TOLERANCES HAVE BEEN DETERMINED AND DEVIATIONS WILL BE CAUSE FOR REJECTION. REMOVE ALL BURRS AND SHARP EDGES

| DECIMALS | TOLERANCES | FRACTIONS |
|-------------|------------|-----------------|
| .X ± .05 | | ± 1/64 |
| .XX ± .01 | | ANGLES ± 0° 30' |
| .XXX ± .005 | | |

CUT HERE GUARANTEED 2-16

| REQ. PER UNIT | USED ON | | | |
|---------------|---------|-------------|------------|----------|
| | MODEL | PROJECT NO. | ASS'Y. NO. | DATE |
| 1 | VOX | | A-585 | 1-2-52 |
| 1 | PMO 1/2 | | | 2-2-55 |
| 1 | VOX 1/2 | | | 2-2-55 |
| 1 | RTF | | | 2-1-56 |
| 1 | RTF-2 | M/D | | 11-16-58 |



A = 9/64 D (.140) 4 REQ.
 B = 5/16 D (.312) 1 REQ.

BLANK SIZE
 1 1/2 x 1

| ISSUE | ITEM | CHANGED FROM | DATE | CN. NO. | DRAFTS | CHECKER | ENG. APP. |
|-------|------|--------------------------------------|----------|---------|--------|---------|-----------|
| E | 1 | 9/32 DIM. RELOC. NOTCH, ADD | 11/10/58 | 15168 | AL | JCB | S |
| D | 1 | S404- IRIDITE WAS S101 - CAUSTIC DIP | 12-7-59 | 1001 | P | | EMN |
| C | 2 | 5/16 D. WAS 3/8 D. | 11-20-59 | | DM | Wde | |
| B | 1 | COMPLETE REVISION | 2/2/55 | 1 | JAK | Wde | |

| REQ. | ITEM | PART NO. | DESCRIPTION | SYMBOL |
|------|------|----------|------------------------------|-----------------|
| | | | .081 THK. | |
| | | | STOCK SIZE | |
| | | | ALUMINUM | |
| | | | MATERIAL | WEIGHT PER PC. |
| | | | 5052-H32 | |
| | | | TYPE & TEMPER | |
| | | | HEAT TREAT. SPEC. | |
| | | | FINISH & SPEC. NO. | |
| | | | THE TECHNICAL MATERIEL CORP. | |
| | | | MAMARONECK. NEW YORK | |
| | | | BRACKET, OVEN CONDENSER | |
| | | | (COSC. ASSY.) | |
| | | | DRAWN | ELEC. DES. APP. |
| | | | CHECKED | FINAL APPROVAL |
| | | | MS-309 | E |

| TOLERANCES | SCALE |
|---|---|
| ALL OTHERS DEC. DIM. ± FRAC. DIM. ± ANGULAR DIM. ± | DRILL, PUNCH, COMMERCIAL STOCK SIZES AND MANUFACTURERS TOLERANCES ARE NOT INCLUDED. |