

IF IT IS FOUND DESIRABLE TO CHANGE ANY TOLERANCE OR OTHER DETAIL SPECIFIED ON THIS DRAWING NOTIFY THE PURCHASER PROMPTLY.

UNLESS OTHERWISE SPECIFIED DIMENSIONS ARE IN INCHES AND INCLUDE CHEMICALLY APPLIED OR PLATED FINISHES

MS-302 B

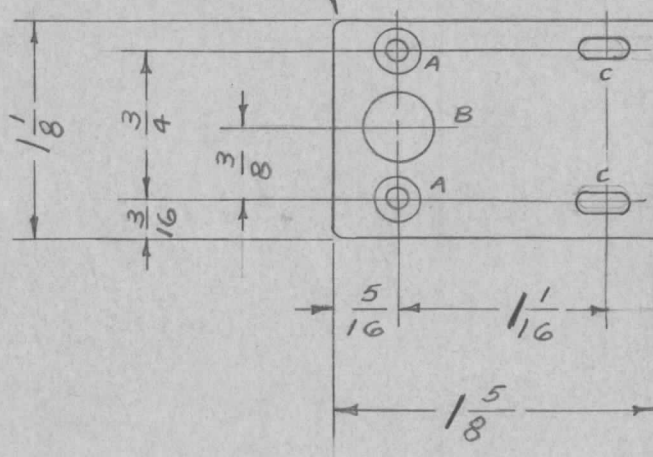
MAXIMUM ALLOWABLE TOLERANCES HAVE BEEN DETERMINED AND DEVIATIONS WILL BE CAUSE FOR REJECTION. REMOVE ALL BURRS AND SHARP EDGES

DECIMALS	TOLERANCES	FRACTIONS
.X ± .05		± 1/64
.XX ± .01		ANGLES
.XXX ± .005		± 0° 30'

CUT HERE
GUARANTEED
2-56

REQ. PER UNIT	USED ON			
	MODEL	PROJECT NO.	ASS'Y. NO.	DATE
1	VOX	101		1-24-55
1	VOX-1-2	291		1-24-55

ROUND OFF 2 CORNERS
1/8 RADIUS



A = DRILL & C'S SINK #3 FLAT HEAD SCREW 2 REQ.
B = 3/8 (.375) D. 1 REQ.
C = 9/64 X 9/32 SLOTS 2 REQ.

REQ.	ITEM	PART NO.	DESCRIPTION	SYMBOL
		.051 THK.	THE TECHNICAL MATERIEL CORP.	
		STOCK SIZE	MAMARONECK, NEW YORK	
		ALUMINUM	FRONT DOOR	
		MATERIAL	LOCK BRACKET	
		WEIGHT PER PC.		
		525-H32		
		TYPE & TEMPER		
		HEAT TREAT. SPEC.		
		S404 IRIDITE		
		FINISH & SPEC. NO.		

B	1	S404-IRIDITE WAS S101-CAUSTIC DIP	12-7 59	12-7 59	P	EMN	
+	+	REDRAWN NO CHANGE	1-24-55	+	P.B. JAR	WDC	
ISSUE	ITEM	CHANGED FROM	DATE	CN. NO.	DRAFTS	CHECKER	ENG. APP.

TOLERANCES

SCALE

DRILL, PUNCH, COMMERCIAL STOCK SIZES AND MANUFACTURERS TOLERANCES ARE NOT INCLUDED.

ALL OTHERS

DEC. DIM. ±
FRAC. DIM. ± 1/64
ANGULAR DIM. ±

DRAWN	ELEC. DES. APP.	MECH. DES. APP.
JAR 1-24-55		WDC
CHECKED	FINAL APPROVAL	
	MS-302 B	