

THE CONTENTS OF THIS DRAWING ARE THE EXCLUSIVE PROPERTY OF THE TECHNICAL MATERIEL CORP. ITS UNAUTHORIZED USE OR REPRODUCTION IN WHOLE OR IN PART IS STRICTLY FORBIDDEN.

REQ. PER UNIT

1

USED ON

MODEL

TRX-1

ASS'Y. NO.

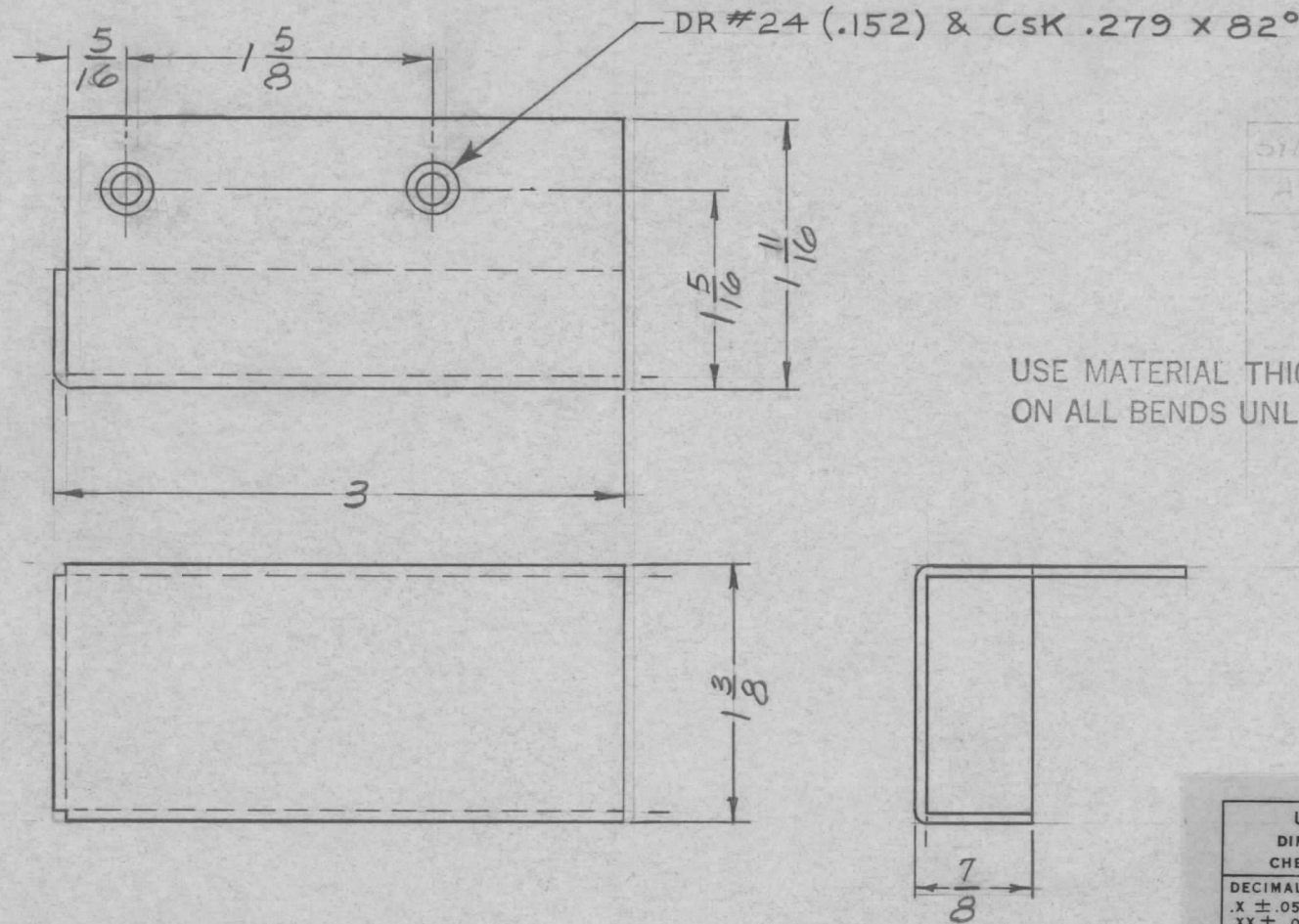
AO-111

DATE

8-27-62

MS-3012

A



SYM	DESCRIPTION	REQ
A	FC46 (S2) DR THRU 2	2

USE MATERIAL THICKNESS FOR MAX. RADIUS ON ALL BENDS UNLESS OTHERWISE SPECIFIED

UNLESS OTHERWISE SPECIFIED DIMENSIONS ARE IN INCHES AND INCLUDE CHEMICALLY APPLIED OR PLATED FINISHES	
DECIMALS	FRACTIONS
.X ± .05	± 1/64
.XX ± .01	ANGLES
.XXX ± .005	± 0° 30'

CUT HERE GUARANTEED 2-66

REQ.	ITEM	PART NO.	J. STRUMER	DESCRIPTION	SYMBOL
				064 THICK	
				STOCK SIZE	
				ALUMINUM	
				MATERIAL	
				5052-H32	
				TYPE & TEMPER	
				HEAT TREAT. SPEC.	
				3404 YEL IRIDITE	
				FINISH & SPEC. NO.	
				DRAWN	
				CHECKED	
				FINAL APPROVAL	
				T. RAMIREZ	
				D. Hosham	
				3-12-63	
				MS-3012	
				A	

UNLESS OTHERWISE SPECIFIED:
DIMENSIONS ARE IN INCHES
TOLERANCES ON
FRAC. ± 1/64 DEC. ± .005 ANGLES ± 1/2°

SCALE: FULL
MAXIMUM ALLOWABLE TOLERANCES HAVE BEEN DETERMINED AND ANY DEVIATIONS WILL BE CAUSE FOR REJECTION.
REMOVE ALL BURRS AND SHARP EDGES

THE CONTENTS OF THIS DRAWING ARE THE EXCLUSIVE PROPERTY OF THE TECHNICAL MATERIEL CORP. ITS UNAUTHORIZED USE OR REPRODUCTION IN WHOLE OR IN PART IS STRICTLY FORBIDDEN.

REQ. PER UNIT

USED ON

MODEL

ASS'Y. NO.

DATE

QDS

9-7-62

MS-3015

B

~FINISHING NOTES~

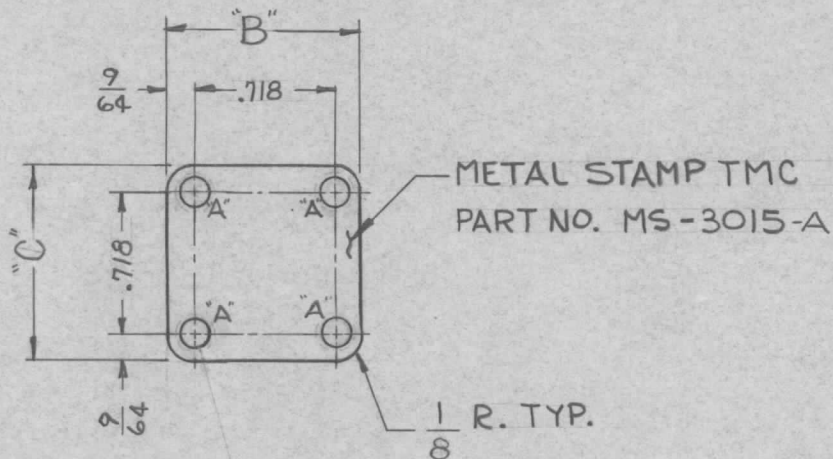
1-5404 IRIDITE

2-FRONT & EDGES ONLY:

A-S114 ZINC CHROMATE PRIMER

B-S115 TMC SMOOTH GREY ENAMEL OR PRIME

& PAINT TO CUST. SPEC.



TMC PART NO.	"A"	"B"	"C"
MS-3015-1	9/64 DIA	1"	1"
MS-3015-2	4-40 DRILL & TAP	1"	1"
MS-3015-3	6-32 DRILL & TAP	1"	1"

UNLESS OTHERWISE SPECIFIED
DIMENSIONS ARE IN INCHES AND INCLUDE
CHEMICALLY APPLIED OR PLATED FINISHES

DECIMALS	FRACTIONS
.X ± .05	± 1/64
.XX ± .01	ANGLES
.XXX ± .005	± 0° 30'

TOLERANCES

CUT HERE
GUARANTEED
2-66

REQ.	ITEM	PART NO.	HARTENGO DESCRIPTION				SYMBOL
		1/8 4	THE TECHNICAL MATERIEL CORP.				
		STOCK SIZE	MAMARONECK, NEW YORK				
B	MS-3015-3 ADDED	8/27/65 14732	COVER, BLANK				
A	CHART ADDED DIMS & THICKNESS CLARIFIED	10-4-62 7281	ALUMINUM				
			MATERIAL				
			QDS				
SYM	DESCRIPTION	DATE	CH. NO.	DRAFTS	CHECKER	ENG. APP.	
UNLESS OTHERWISE SPECIFIED: DIMENSIONS ARE IN INCHES TOLERANCES ON FRAC. ± 1/64 DEC. ± .005 ANGLES ± 1/2°		SCALE: DO NOT SCALE					
		MAXIMUM ALLOWABLE TOLERANCES HAVE BEEN DETERMINED AND ANY DEVIATIONS WILL BE CAUSE FOR REJECTION. REMOVE ALL BURRS AND SHARP EDGES					
		2024-T3					
		TYPE & TEMPER	HEATTREAT. SPEC.	DRAWN	CHECKED	FINAL APPROVAL	
		SEE FINISHING NOTES					
		FINISH & SPEC. NO.	ELEC. DES. APP.	MECH. DES. APP.			
						MS-3015	B

THE CONTENTS OF THIS DRAWING ARE THE EXCLUSIVE PROPERTY OF THE TECHNICAL MATERIEL CORP. ITS UNAUTHORIZED USE OR REPRODUCTION IN WHOLE OR IN PART IS STRICTLY FORBIDDEN.

REQ. PER UNIT

USED ON

MODEL

ASS'Y. NO.

DATE

1

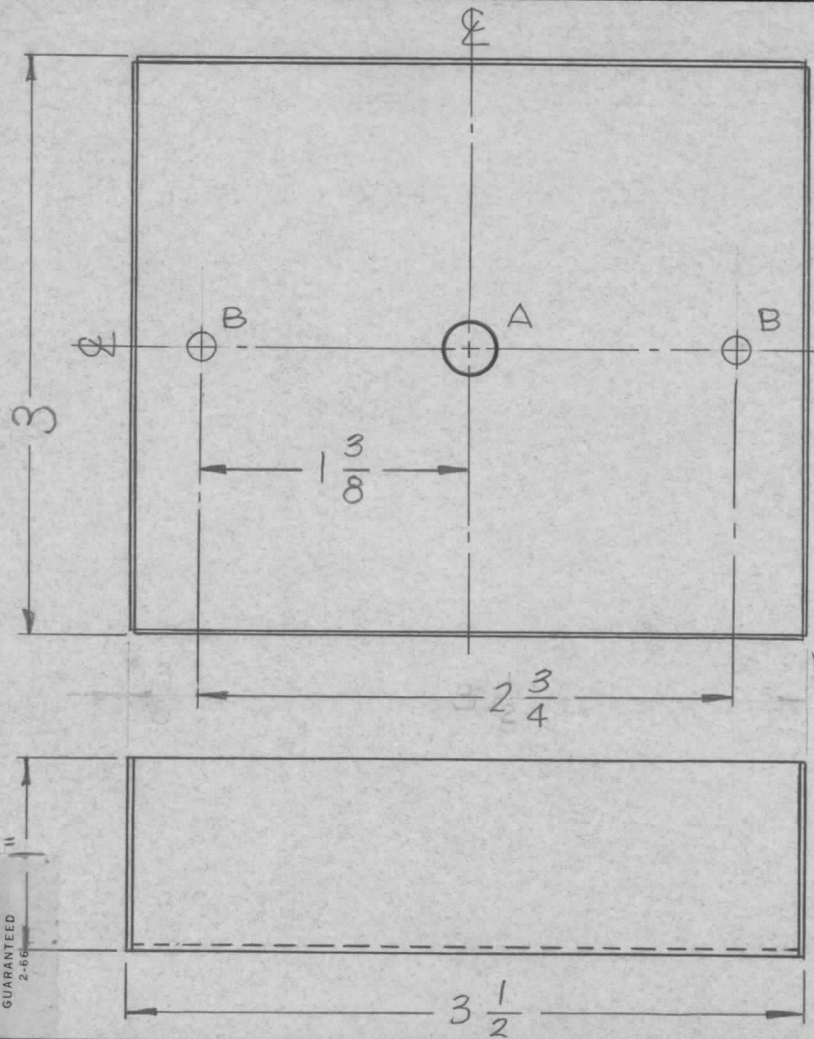
TRC-5K

A-3081

9-21-62

MS-3016

A



HOLE

A ~ 17/64 DIA - 1 REQ.

B ~ 1/8 DIA - 2 REQ.

NOTICE TO PERSONS RECEIVING THIS DRAWING

THE TECHNICAL MATERIEL CORPORATION claims proprietary right in the material disclosed hereon. This drawing is issued in confidence for engineering information only and may not be reproduced or used to manufacture anything shown hereon without permission from THE TECHNICAL MATERIEL CORPORATION to the user. This drawing is loaned for mutual assistance and is subject to recall at any time.

Property of:

THE TECHNICAL MATERIEL CORPORATION
MAMARONECK, NEW YORK

NOTE

DO NOT SOLDER SEAMS.

UNLESS OTHERWISE SPECIFIED DIMENSIONS ARE IN INCHES AND INCLUDE CHEMICALLY APPLIED OR PLATED FINISHES

DECIMALS	FRACTIONS
.X ± .05	± 1/64
.XX ± .01	ANGLES ± 0° 30'
.XXX ± .005	

TOLERANCES

CUT HERE GUARANTEED 2-66

REF: A-3081(2)

REQ.	ITEM	PART NO.	DESCRIPTION	SYMBOL
		.020 THK.	THE TECHNICAL MATERIEL CORP. MAMARONECK, NEW YORK	SHIELD, R.F.
		STOCK SIZE		
		COPPER		
		MATERIAL		
		MEDIUM HARD		
		TYPE & TEMPER	DRAWN	CHECKED
		HEAT TREAT. SPEC.		FINAL APPROVAL
		FINISH & SPEC. NO.	ELEC. DES. APP.	MECH. DES. APP.

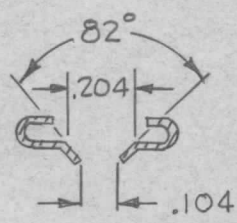
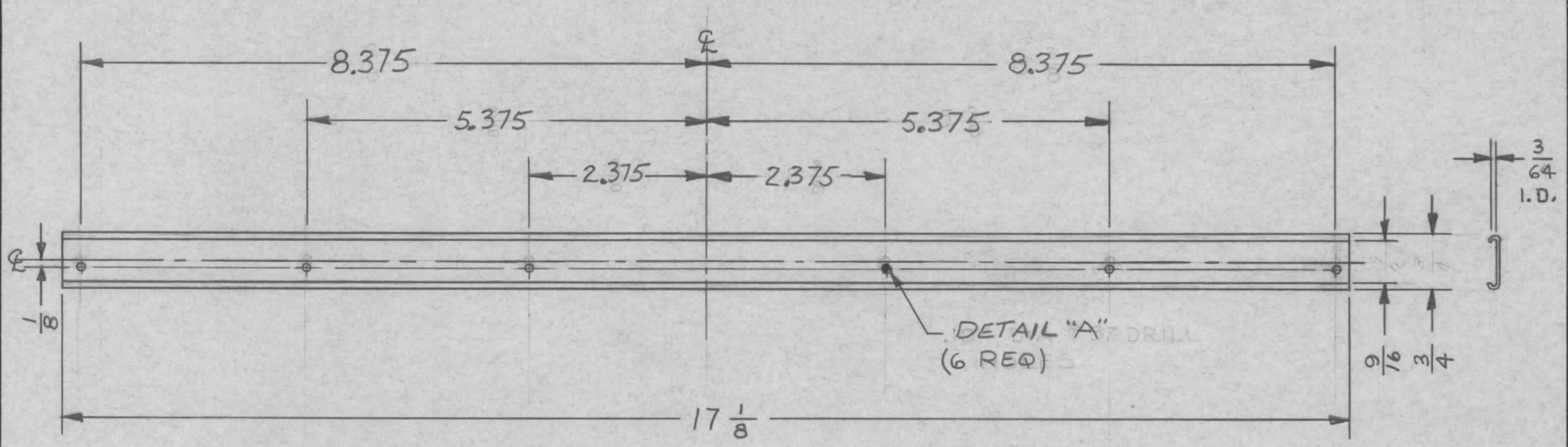
Handwritten notes in table: A (2) "B" HOLES ADDED, 3.22.67, 18023, uhd, JMA, 9-21-62, JMA, 2B, MS-3016 A

UNLESS OTHERWISE SPECIFIED: DIMENSIONS ARE IN INCHES TOLERANCES ON FRAC. ± 1/64 DEC. ± .005 ANGLES ± 1/2°

SCALE: MAXIMUM ALLOWABLE TOLERANCES HAVE BEEN DETERMINED AND ANY DEVIATIONS WILL BE CAUSE FOR REJECTION. REMOVE ALL BURRS AND SHARP EDGES

THE CONTENTS OF THIS DRAWING ARE THE EXCLUSIVE PROPERTY OF THE TECHNICAL MATERIEL CORP. ITS UNAUTHORIZED USE OR REPRODUCTION IN WHOLE OR IN PART IS STRICTLY FORBIDDEN.

REQ. PER UNIT 1	USED ON			MS-3023	A
	MODEL	ASS'Y. NO.	DATE		
	SPP-41416		9-24-62		



FINISH:
 DEGREASE
 S-114 ZINC CHROMATE PRIMER
 S-115 SMOOTH GRAY ENAMEL

MATING PARTS:
 PX 670-17
 PR 104

UNLESS OTHERWISE SPECIFIED
 DIMENSIONS ARE IN INCHES AND INCLUDE
 CHEMICALLY APPLIED OR PLATED FINISHES

DECIMALS	TOLERANCES	FRACTIC
.X ± .05		± 1/
.XX ± .01		ANGL
.XXX ± .005		± 0°

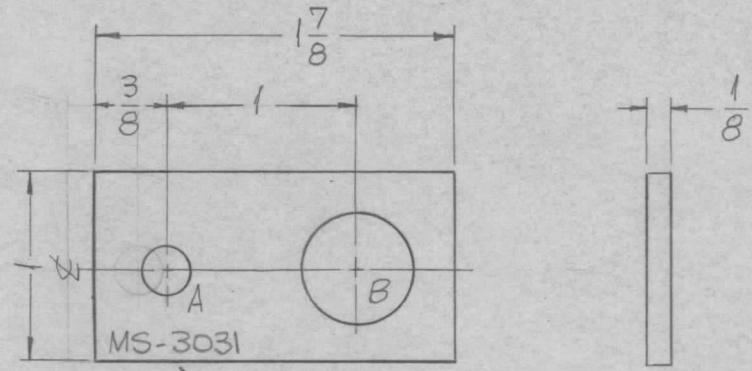
REQ.	ITEM	PART NO.	DESCRIPTION			SYMBOL		
		.012	MARTINENGO					
		STOCK SIZE	THE TECHNICAL MATERIEL CORP.					
		STEEL	MAMARONECK, NEW YORK					
		MATERIAL	HOLDER, CARD					
A	COMPLETELY REV.	2.15.68	18763	MS.	EFM			
SYM	DESCRIPTION	DATE	CH. NO.	DRAFTS	CHECKER	ENG. APP.		
UNLESS OTHERWISE SPECIFIED: DIMENSIONS ARE IN INCHES TOLERANCES ON		SCALE: H		MILD			MJTANTILLI 9-24-62	
FRAC. ± 1/64 DEC. ± .005 ANGLES ± 1/2°		MAXIMUM ALLOWABLE TOLERANCES HAVE BEEN DETERMINED AND ANY DEVIATIONS WILL BE CAUSE FOR REJECTION. REMOVE ALL BURRS AND SHARP EDGES		TYPE & TEMPER	HEAT TREAT. SPEC.	DRAWN	CHECKED	FINAL APPROVAL
				SEE NOTE				
				FINISH & SPEC. NO.	ELEC. DES. APP.	MECH. DES. APP.	MS-3023 A	

THE CONTENTS OF THIS DRAWING ARE THE EXCLUSIVE PROPERTY OF THE TECHNICAL MATERIEL CORP. ITS UNAUTHORIZED USE FOR REPRODUCTION IN WHOLE OR IN PART IS STRICTLY FORBIDDEN.

REQ. PER UNIT	USED ON		
	MODEL	ASS'Y. NO.	DATE
4	GPT-200K	AP-109	6-19-63
4	GPT-200K	AP-111	6-19-63

MS-3031

0



METAL STAMP TMC PART NO., $\frac{1}{8}$ HIGH GOTHIC AS SHOWN.

HOLES:

A-15/64 DIA. — 1 REQ.
B-9/16 DIA. — 1 REQ.

UNLESS OTHERWISE SPECIFIED DIMENSIONS ARE IN INCHES AND INCLUDE CHEMICALLY APPLIED OR PLATED FINISHES		
DECIMALS	TOLERANCES	FRACTIONS
.X ± .05		± 1/64
.XX ± .01		ANGLES
.XXX ± .005		± 0° 30'

CUT HERE GUARANTEED 2-66

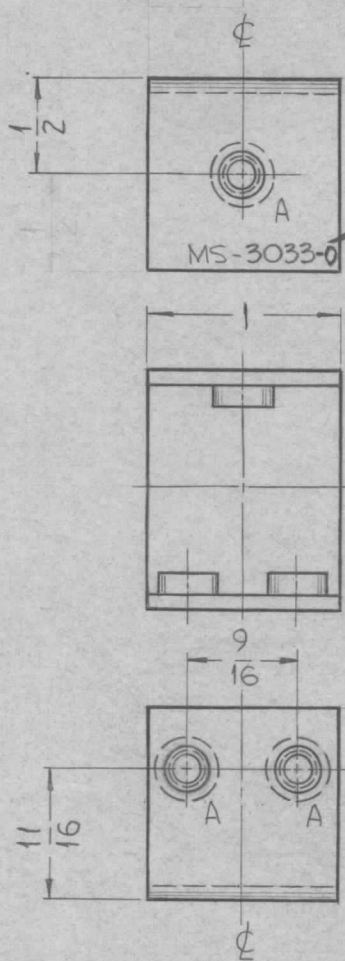
REQ.	ITEM	PART NO.	F. BUDETTI	DESCRIPTION	SYMBOL	
		1/8 THICK		THE TECHNICAL MATERIEL CORP. MAMARONECK, NEW YORK		
		STOCK SIZE		BRACKET, TERMINAL MTG.		
		ALUMINUM				
		MATERIAL				
		5052	H-32	SRG	aa RA	
		TYPE & TEMPER	HEAT TREAT. SPEC.	DRAWN	CHECKED	FINAL APPROVAL
		S404 YELLOW IRIDITE		SRG	AA 1/2/64	MS-3031
		FINISH & SPEC. NO.	ELEC. DES. APP.	MECH. DES. APP.		

UNLESS OTHERWISE SPECIFIED DIMENSIONS ARE IN INCHES AND INCLUDE CHEMICALLY APPLIED OR PLATED FINISHES		
DECIMALS	TOLERANCES	FRACTIONS
.X ± .05		± 1/64
.XX ± .01		ANGLES
.XXX ± .005		± 0° 30'

THE CONTENTS OF THIS DRAWING ARE THE EXCLUSIVE PROPERTY OF THE TECHNICAL MATERIEL CORP. ITS UNAUTHORIZED USE FOR REPRODUCTION IN WHOLE OR IN PART IS STRICTLY FORBIDDEN.

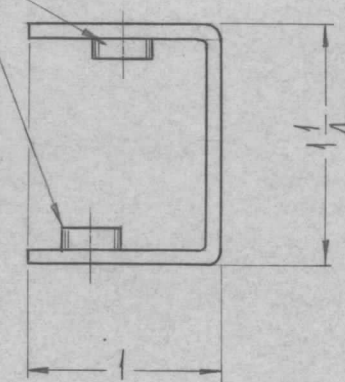
REQ. PER UNIT	USED ON		
	MODEL	ASS'Y. NO.	DATE
2	GPT-200K	AX-398	11-9-62

MS-3033 0



METAL STAMP TMC PART NO. 1/8 HIGH GOTHIC.

MOUNT INTO ALL "A" HOLES AFTER FINISHING



UNLESS OTHERWISE SPECIFIED DIMENSIONS ARE IN INCHES AND INCLUDE CHEMICALLY APPLIED OR PLATED FINISHES

DECIMALS	FRACTIONS
.X ± .05	± 1/64
.XX ± .01	ANGLES ± 0° 30'
.XXX ± .005	

TOLERANCES

HOLE	DESCRIPTION	REQ.
A	.221-.224 DIA.	3

UNLESS OTHERWISE SPECIFIED:

1. USE MATERIAL THICKNESS FOR MAXIMUM RADIUS ON ALL BENDS.
2. ALL ANGULAR BENDS 90°.
3. REMOVE ALL BURRS AND SHARP EDGES.
4. MOUNT INSERTS AFTER FINISHING.

CUT HERE GUARANTEED 2-66

3	1	NT-129-832-4	NUT ROUND, SWAGE TYPE	A
---	---	--------------	-----------------------	---

REQ. ITEM	PART NO.	F. BUDETTI	DESCRIPTION	SYMBOL
-----------	----------	------------	-------------	--------

.064 THICK		THE TECHNICAL MATERIEL CORP.		
STOCK SIZE		MAMARONECK, NEW YORK		

ALUMINUM		BRACKET, VARIABLE RESISTOR MOUNTING		
----------	--	-------------------------------------	--	--

0	ORIGINAL RELEASE FOR PRODUCTION	3-2-64	AM			
---	---------------------------------	--------	----	--	--	--

SYM	DESCRIPTION	DATE	CH. NO.	DRAFTS	CHECKER	ENG. APP.
	UNLESS OTHERWISE SPECIFIED DIMENSIONS ARE IN INCHES AND INCLUDE CHEMICALLY APPLIED OR PLATED FINISHES	SCALE	— 1:1			

DECIMALS	FRACTIONS	CODE
.X ± .05	± 1/64	A
.XX ± .01	ANGLES ± 0° 30'	
.XXX ± .005		

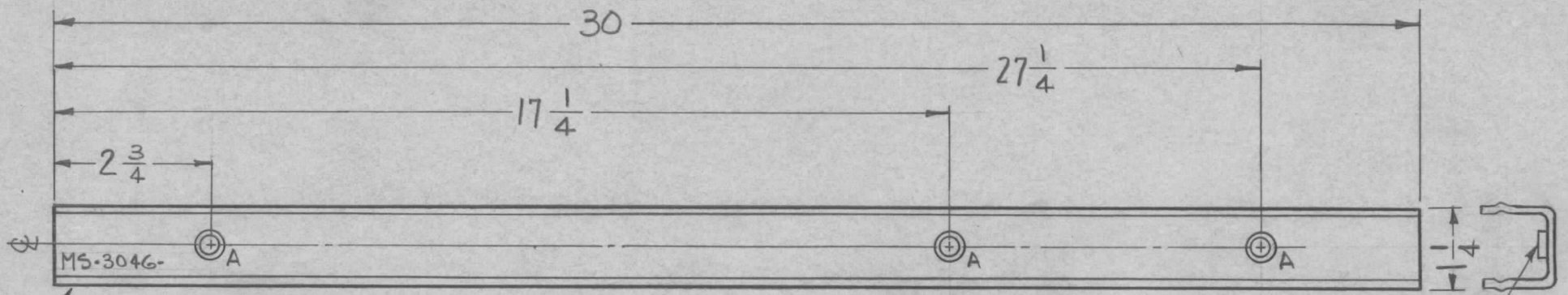
5052-432	SRG	90/5	RAC
TYPE & TEMPER	HEAT TREAT. SPEC.	DRAWN	CHECKED
S 404 YELLOW IRIDITE		2-B 11/10/64	12/1/64
FINISH & SPEC. NO.	ELEC. DES. APP.	MECH. DES. APP.	

MS-3033 0

THE CONTENTS OF THIS DRAWING ARE THE EXCLUSIVE PROPERTY OF THE TECHNICAL MATERIEL CORP. ITS UNAUTHORIZED USE FOR REPRODUCTION IN WHOLE OR IN PART IS STRICTLY FORBIDDEN.

REQ. PER UNIT	USED ON		
	MODEL	ASS'Y. NO.	DATE
1	RAK-16B	A-3104	1-17-63
1	RAK-16C	A-3104	1-17-63

MS-3046



METAL STAMP TMC PART NO. 1/8 HIGH, GOTHIC

~HOLE~
A~ .191-.194 DIA REQ. 3

MOUNT ITEM (1) IN ALL "A" HOLES AS SHOWN AFTER FINISHING.



UNLESS OTHERWISE SPECIFIED DIMENSIONS ARE IN INCHES AND INCLUDE CHEMICALLY APPLIED OR PLATED FINISHES

DECIMALS	TOLERANCES	FRACTIONS
.X ± .05		± 1/64
.XX ± .01		ANGLES
.XXX ± .005		± 0° 30'

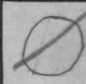
CUT HERE GUARANTEED 2-66

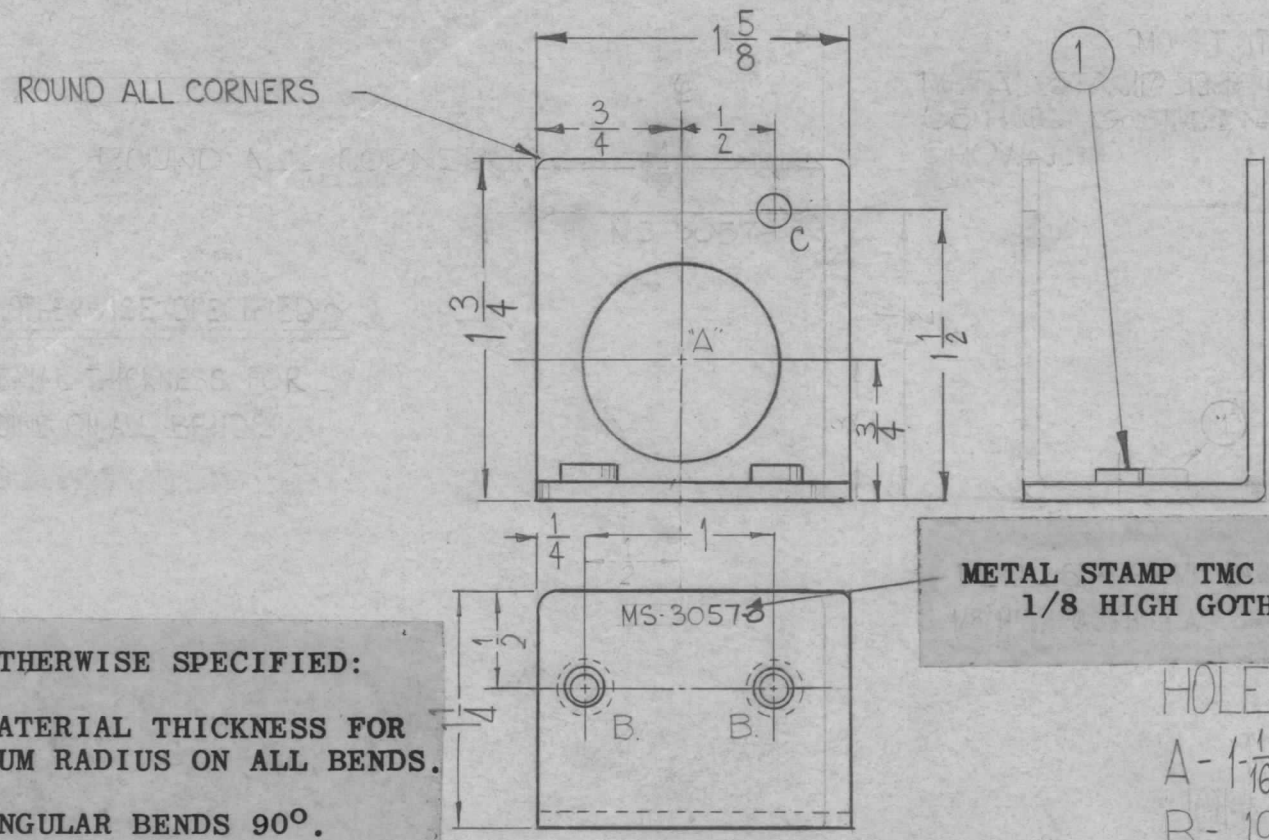
REF: TMC # PO-160

3	1	NT-129-632-3	NUT, ROUND, SWAGE TYPE			A
REQ. ITEM	PART NO.		STRUMER DESCRIPTION			SYMBOL
STOCK SIZE			THE TECHNICAL MATERIEL CORP. MAMARONECK, NEW YORK			
MATERIAL			A.C. STRIP CHANNEL			
SYM	DESCRIPTION	DATE	CH. NO.	DRAFTS	CHECKER	ENG. APP.
UNLESS OTHERWISE SPECIFIED DIMENSIONS ARE IN INCHES AND INCLUDE CHEMICALLY APPLIED OR PLATED FINISHES		SCALE (DO NOT SCALE)				
DECIMALS	TOLERANCES	FRACTIONS	CODE	TYPE & TEMPER		
.X ± .05		± 1/64		HEAT TREAT. SPEC.		
.XX ± .01		ANGLES		DRAWN		
.XXX ± .005		± 0° 30'		CHECKED		
FINISH & SPEC. NO.				ELEC. DES. APP.		MECH. DES. APP.
				MS-3046		

THE CONTENTS OF THIS DRAWING ARE THE EXCLUSIVE PROPERTY OF THE TECHNICAL MATERIEL CORP. ITS UNAUTHORIZED USE OR REPRODUCTION IN WHOLE OR IN PART IS STRICTLY FORBIDDEN.

REQ. PER UNIT	USED ON		
	MODEL	ASS'Y. NO.	DATE
2	GPT-200K	AP-110	

MS-3057 

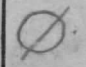


METAL STAMP TMC PART NO. 1/8 HIGH GOTHIC.

HOLES
 A - 1-1/16 DIA. (1) REQ.
 B - 1/91 1/94 DIA (2) REQ.
 C - 11/64 DIA (1) REQ.

- UNLESS OTHERWISE SPECIFIED:
1. USE MATERIAL THICKNESS FOR MAXIMUM RADIUS ON ALL BENDS.
 2. ALL ANGULAR BENDS 90°.
 3. REMOVE ALL BURRS AND SHARP EDGES.
 4. MOUNT INSERTS AFTER FINISHING.

REF: LD-1219, 1220 (1)

2	1	NT-129-6-32-4	NUT, ROUND SWAGE TYPE	B
REQ.	ITEM	PART NO.	F. BUDETTI DESCRIPTION	SYMBOL
		.093	THE TECHNICAL MATERIEL CORP.	
		STOCK SIZE	MAMARONECK, NEW YORK	
		ALUMINUM	BRACKET, MTG., INCAN. LAMP	
		MATERIAL		
		5052-H32	H-3	J.F.V.
		TYPE & TEMPER	HEAT TREAT. SPEC.	DRAWN
		S404 IRIDITE		2/1/64
		FINISH & SPEC. NO.	ELEC. DES. APP.	MECH. DES. APP.
				MS-3057 

ORIGINAL RELEASE FOR PRODUCTION 3-2-64 A.M.

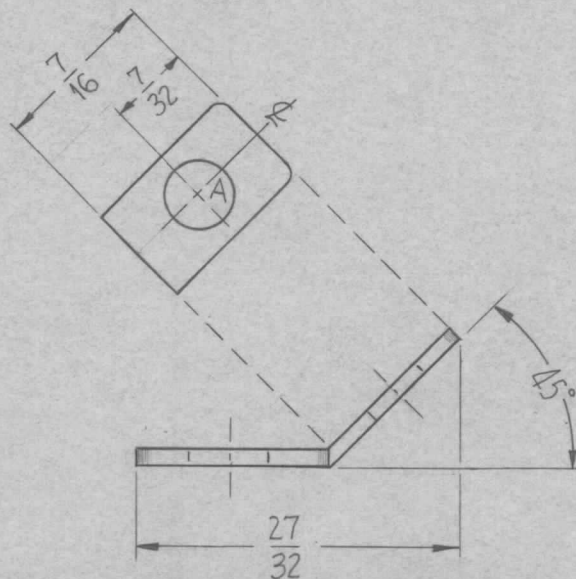
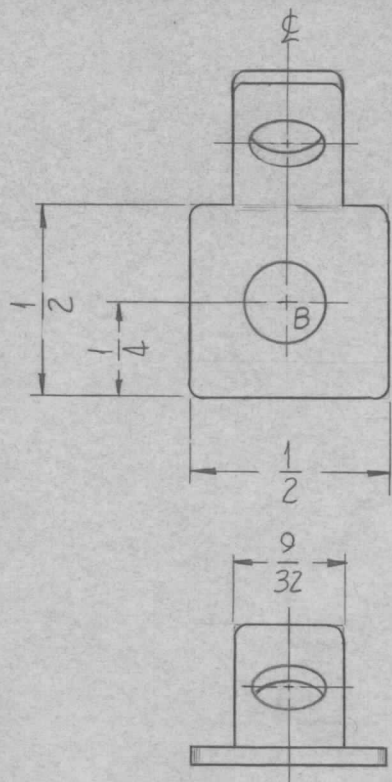
UNLESS OTHERWISE SPECIFIED:
 DIMENSIONS ARE IN INCHES
 TOLERANCES ON
 FRAC. ± 1/64 DEC. ± .005 ANGLES ± 1/2°

SCALE: 1:1

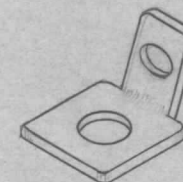
MAXIMUM ALLOWABLE TOLERANCES HAVE BEEN DETERMINED AND ANY DEVIATIONS WILL BE CAUSE FOR REJECTION.
 REMOVE ALL BURRS AND SHARP EDGES

THE CONTENTS OF THIS DRAWING ARE THE EXCLUSIVE PROPERTY OF THE TECHNICAL MATERIEL CORP. ITS UNAUTHORIZED USE FOR REPRODUCTION IN WHOLE OR IN PART IS STRICTLY FORBIDDEN.

REQ. PER UNIT 16	USED ON			MS-3071	O
	MODEL GPT-200K	ASS'Y. NO. A-3122	DATE 10-25-62		



HOLE	DESCRIPTION	REQ.
A	11/64 DIA.	1
B	13/64 DIA.	1



— ISOMETRIC VIEW —

NOTE:
ROUND ALL CORNERS

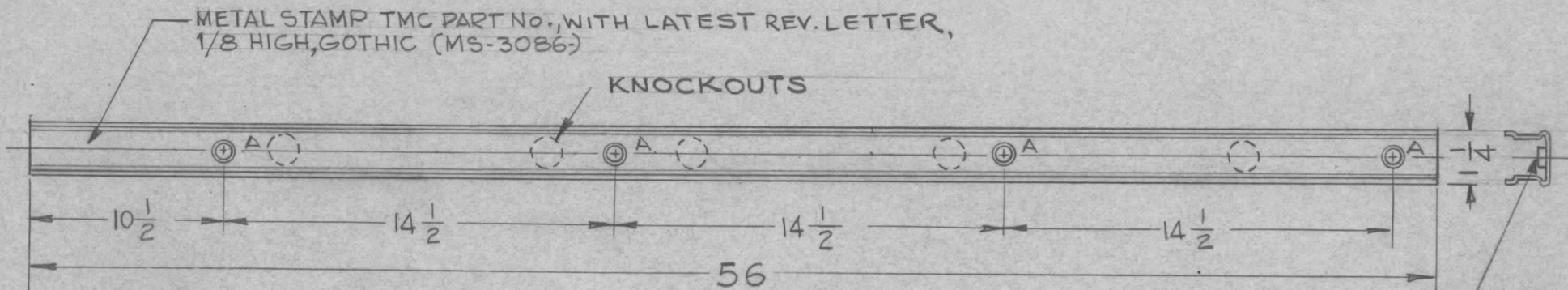
REQ.	ITEM	PART NO.	F. BUDETTI	DESCRIPTION	SYMBOL
		.064 THICK	THE TECHNICAL MATERIEL CORP. MAMARONECK, NEW YORK		
		STOCK SIZE	BRACKET, TERMINAL MOUNTING		
		COPPER	MATERIAL		
		1/2 HARD	SRG		RAC
		TYPE & TEMPER	HEAT TREAT. SPEC.	DRAWN	CHECKED
		NATURAL		J.B.H. etc 11/2/62	
		FINISH & SPEC. NO.	ELEC. DES. APP.	MECH. DES. APP.	MS-3071 O
UNLESS OTHERWISE SPECIFIED DIMENSIONS ARE IN INCHES AND INCLUDE CHEMICALLY APPLIED OR PLATED FINISHES	SCALE	2:1			
DECIMALS .X ± .05 .XX ± .01 .XXX ± .005	FRACTIONS ± 1/64 ANGLES ± 0° 30'	CODE	A		
TOLERANCES					

THE CONTENTS OF THIS DRAWING ARE THE EXCLUSIVE PROPERTY OF THE TECHNICAL MATERIEL CORP. ITS UNAUTHORIZED USE FOR REPRODUCTION IN WHOLE OR IN PART IS STRICTLY FORBIDDEN.

REQ. PER UNIT	USED ON		
	MODEL	ASS'Y. NO.	DATE
1	RAK-29A	A-3113	2-21-63
1	RAK-30A	A-3114	

MS-3086 A

- HOLE -
A-.191-.194 DIA. 4 Req.



NOTE:

PIECES TO BE ORIENTED SO THAT "A"-HOLES WILL NOT APPEAR IN RANDOM KNOCKOUTS.

MOUNT ITEM (1) IN ALL "A" HOLES AS SHOWN AFTER FINISHING

MATERIAL:
TMC PART NO PO-160 MODIFIED AS SHOWN.

4	1	NT-129-632-3	NUT ROUND, SWAGE TYPE	A
REQ.	ITEM	PART NO.	STRUMER DESCRIPTION	SYMBOL
STOCK SIZE			THE TECHNICAL MATERIEL CORP. MAMARONECK, NEW YORK	
SEE NOTE			A.C. STRIP CHANNEL	
MATERIAL				
UNLESS OTHERWISE SPECIFIED DIMENSIONS ARE IN INCHES AND INCLUDE CHEMICALLY APPLIED OR PLATED FINISHES			SCALE DO NOT SCALE	
DECIMALS .X ± .05 .XX ± .01 .XXX ± .005			FRACTIONS ± 1/64 ANGLES ± 0° 30'	
TOLERANCES			CODE	
TYPE & TEMPER			HEAT TREAT. SPEC.	
DRAWN			CHECKED	
FINISH & SPEC. NO.			ELEC. DES. APP. MECH. DES. APP.	
			MS-3086 A	

THE CONTENTS OF THIS DRAWING ARE THE EXCLUSIVE PROPERTY OF THE TECHNICAL MATERIEL CORP. ITS UNAUTHORIZED USE FOR REPRODUCTION IN WHOLE OR IN PART IS STRICTLY FORBIDDEN.

REQ. PER UNIT

USED ON

MODEL

ASS'Y. NO.

DATE

1

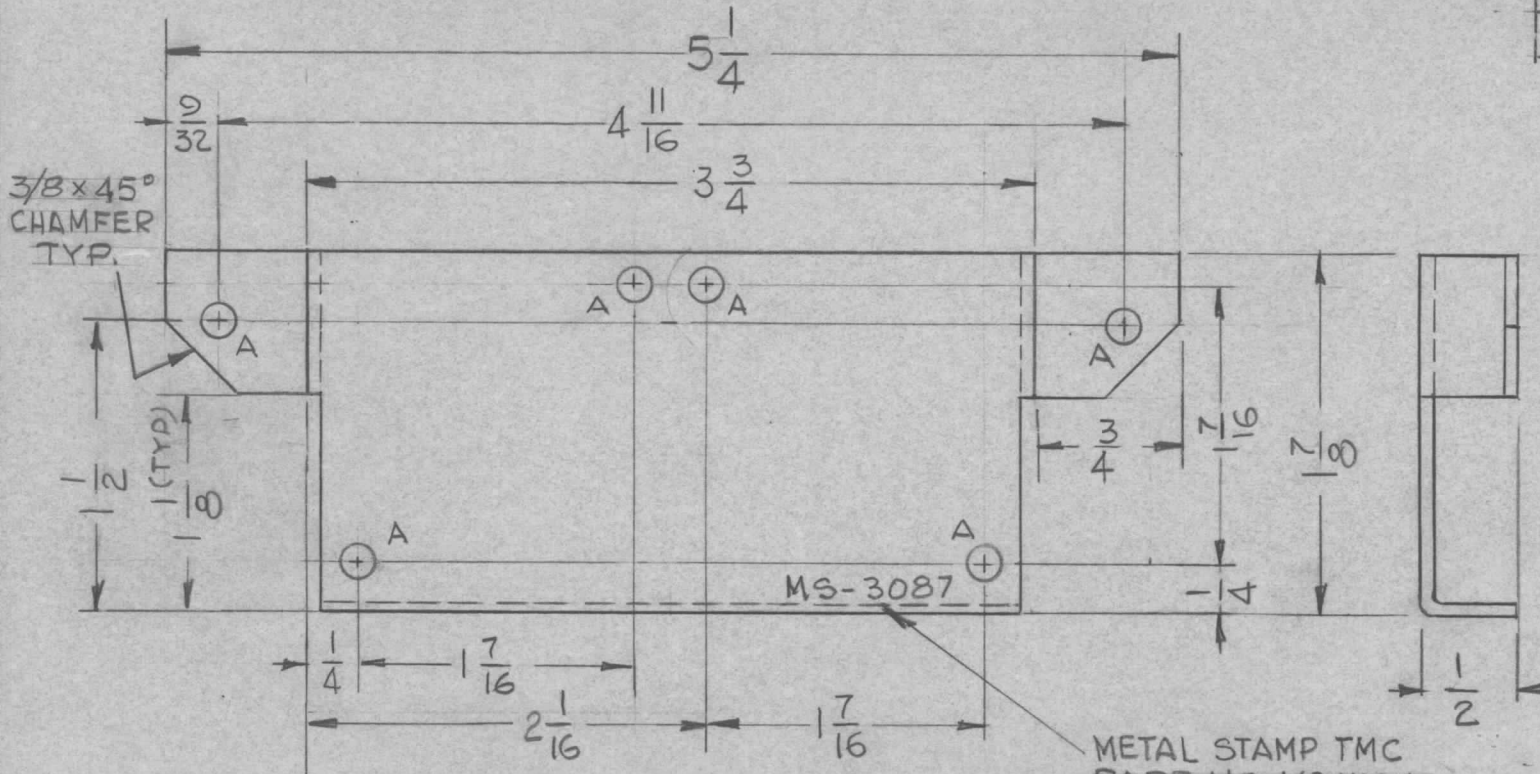
LSP-11

A-3115

2-23-63

MS-3087

HOLE	DESCRIPTION	REQ.
A	3/16 DIA.	6



METAL STAMP TMC PART NO 1/8 HIGH GOTHIC AS SHOWN

REF: LD-1184

SYM	DESCRIPTION	DATE	CH. NO.	DRAFTS	CHECKER	ENG. APP.	REQ. ITEM	PART NO.	STRUMER DESCRIPTION	SYMBOL		
							.064 THK.		THE TECHNICAL MATERIEL CORP. MAMARONECK, NEW YORK			
							STOCK SIZE					
							ALUMINUM		BRACKET, MOUNTING TRANSFORMER			
							MATERIAL					
UNLESS OTHERWISE SPECIFIED DIMENSIONS ARE IN INCHES AND INCLUDE CHEMICALLY APPLIED OR PLATED FINISHES							SCALE	5052-H32	G.D.L	3/7/63	BP	
DO NOT SCALE								TYPE & TEMPER	HEAT TREAT. SPEC.	DRAWN	CHECKED	FINAL APPROVAL
DECIMALS .X ± .05 .XX ± .01 .XXX ± .005	TOLERANCES	FRACTIONS ± 1/64 ANGLES ± 0° 30'	CODE				S404 YEL. IRIDITE		AMA	3/7/63	MS-3087	
							FINISH & SPEC. NO.	ELEC. DES. APP.	MECH. DES. APP.			

THE CONTENTS OF THIS DRAWING ARE THE EXCLUSIVE PROPERTY OF THE TECHNICAL MATERIEL CORP. ITS UNAUTHORIZED USE FOR REPRODUCTION IN WHOLE OR IN PART IS STRICTLY FORBIDDEN.

REQ. PER UNIT

USED ON

MODEL

ASS'Y. NO.

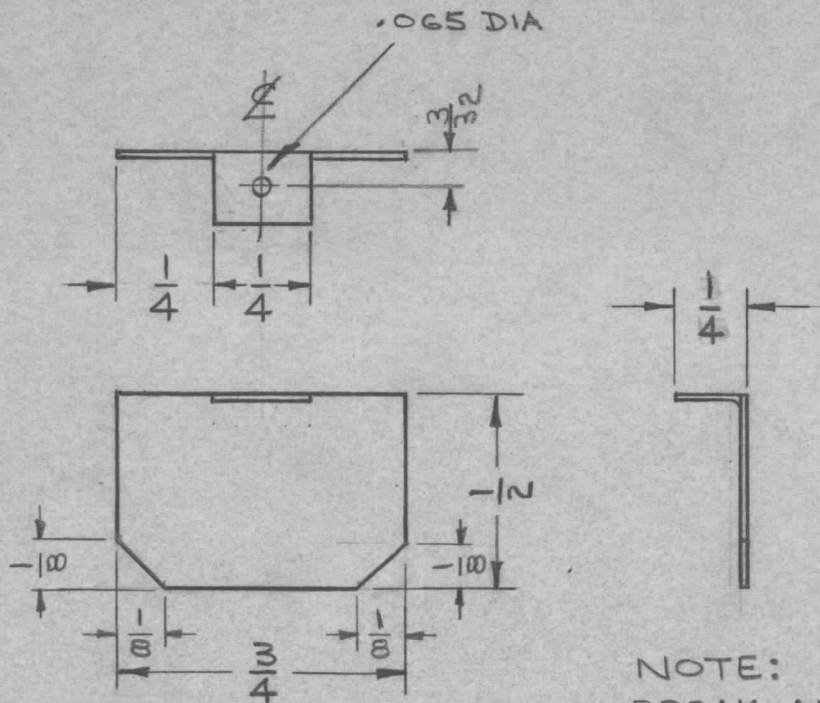
DATE

1

SPU-2

2-12-63

MS-3088



NOTE:
BREAK ALL SHARP
CORNERS AS SHOWN.

REQ.	ITEM	PART NO.	STRUMER	DESCRIPTION	SYMBOL
		.030 THK		THE TECHNICAL MATERIEL CORP.	
		STOCK SIZE		MAMARONECK, NEW YORK	
		BRASS SHIM		SHIELD, ELECTROSTATIC	
		MATERIAL			
		1/2 HARD	<i>MS</i>	<i>JOE</i>	<i>BP</i>
		TYPE & TEMPER		CHECKED	FINAL APPROVAL
		HOT TIN DIP	<i>MS</i>	<i>MS</i>	MS-3088
		FINISH & SPEC. NO.	ELEC. DES. APP.	MECH. DES. APP.	

THE CONTENTS OF THIS DRAWING ARE THE EXCLUSIVE PROPERTY OF THE TECHNICAL MATERIEL CORP. ITS UNAUTHORIZED USE FOR REPRODUCTION IN WHOLE OR IN PART IS STRICTLY FORBIDDEN.

REQ. PER UNIT

2

MODEL

AFC-3

USED ON

ASS'Y. NO.

DATE

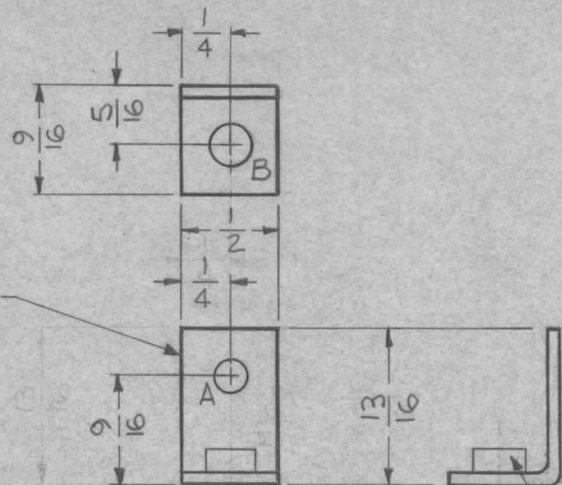
2-13-63

MS-3097

Ø

LEGEND

HOLE	DESCRIPTION	REQ.
A	5/32 DIA.	1
B	.191-.194 DIA.	1



METAL STAMP TMC PART NO. 1/8 HIGH GOTHIC, ON REAR (MS-3097)

1 MOUNT ITEM (1) IN ALL "B" HOLES AS SHOWN AFTER FINISHING.

1	1	NT-129-632-4	NUT, ROUND, SWAGE TYPE	B
REQ. ITEM	PART NO.	STURMER DESCRIPTION		SYMBOL
	.062	THE TECHNICAL MATERIEL CORP. MAMARONECK, NEW YORK		
	STOCK SIZE	BRACKET, COVER		
	ALUMINUM	MATERIAL		
	5052-H32	TYPE & TEMPER	HEAT TREAT. SPEC.	DRAWN
	S-404 YELLOW IRIDITE	FINISH & SPEC. NO.	ELEC. DES. APP.	MECH. DES. APP.
				MS-3097 Ø

Ø ORIGINAL RELEASE	9/26/69	W.			
SYM	DESCRIPTION	DATE	CH. NO.	DRAFTS	CHECKER
UNLESS OTHERWISE SPECIFIED DIMENSIONS ARE IN INCHES AND INCLUDE CHEMICALLY APPLIED OR PLATED FINISHES		SCALE	FULL		
DECIMALS	FRACTIONS	CODE			
.X ± .05	± 1/64				
.XX ± .01	ANGLES				
.XXX ± .005	± 0° 30'				