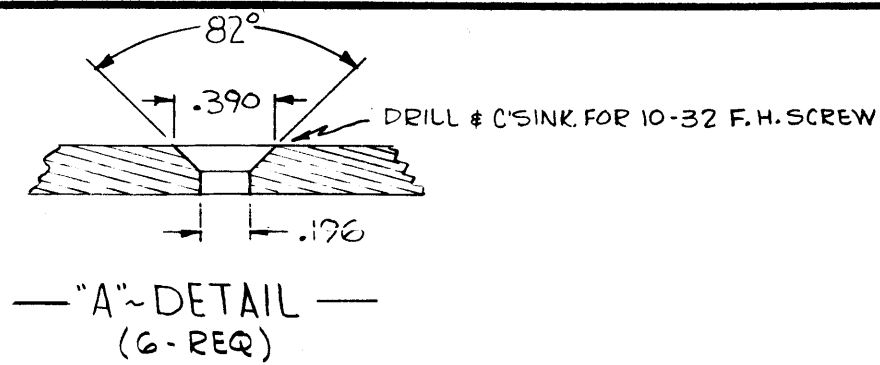
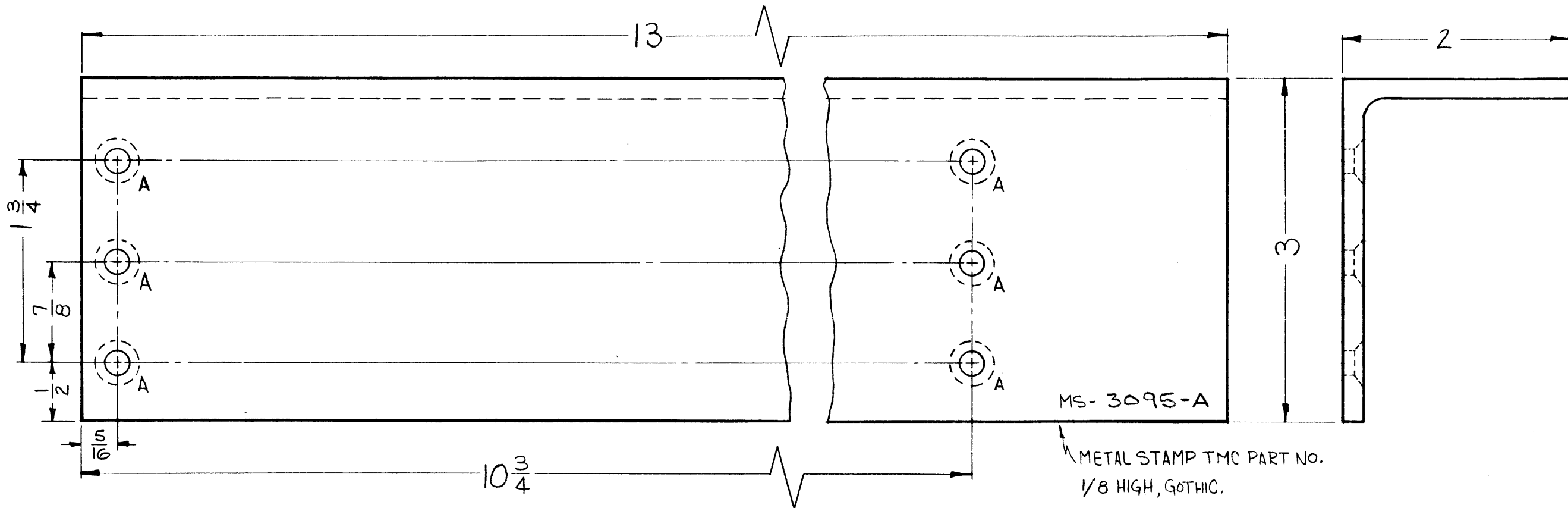


LEGEND		
HOLE	DESCRIPTION	REQ.
A	SEE DETAIL	6



MS-3095 A

REVISIONS					
SYM	DESCRIPTION	DATE	E.M.N. NO.	DRAFT	CHKD APPD
A	S520 WAS S220, FINISH	6/17/64	11556	A.M.	<i>[Signature]</i> <i>[Signature]</i>



FINISH NOTE:
S114 - ZINC CHROMATE PRIMER
S520 - BLUE-GRAY TEXTURED
VINYL PAINT.

REQ'D.	ITEM	PART NUMBER	DESCRIPTION	SYMBOL
STRUMER LIST OF MATERIAL				
MATERIAL	2 x 3 x 3/16 STEEL ANGLE		THE TECHNICAL MATERIEL CORP. MAMARONECK, NEW YORK	
FINISH	SEE NOTE		TITLE SUPPORT BRACKET, RIGHT SIDE	
UNLESS OTHERWISE SPECIFIED DIMENSIONS ARE IN INCHES AND INCLUDE CHEMICALLY APPLIED OR PLATED FINISHES			DRAWN <i>[Signature]</i> DATE 2-5-63 CHECKED <i>[Signature]</i> DATE 3-7-63 ELECT. <i>[Signature]</i> DATE 3-11-63 MECH. <i>[Signature]</i> DATE 3-7-63	FINAL APPROVAL <i>[Signature]</i> DATE MS-3095 SHEET
DECIMALS .X ± .05 .XX ± .01 .XXX ± .005			FRACTIONS ± 1/64 ANGLES ± 0 30'	A REV. LTR.

2	RAK-29A	A-3118
Q'TY./UNIT	MODEL USED ON	ASS'Y. NO.
SCALE FULL (DO NOT SCALE)	CODE	
THE CONTENTS OF THIS DRAWING ARE THE EXCLUSIVE PROPERTY OF THE TECHNICAL MATERIEL CORP. ITS UNAUTHORIZED USE OR REPRODUCTION IN WHOLE OR IN PART IS STRICTLY FORBIDDEN.		

NOTES