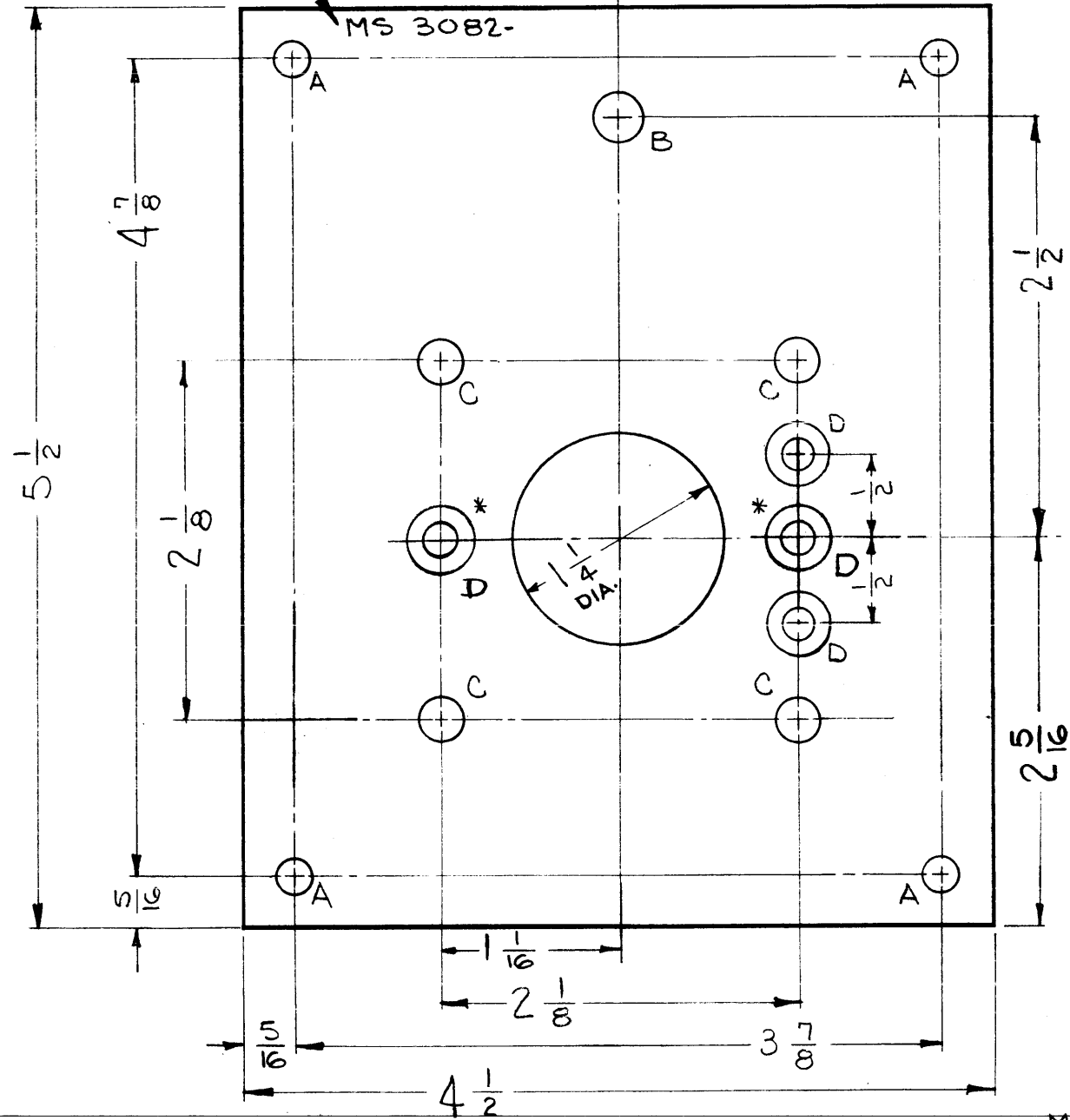


METAL STAMP TMC
PART NO. 1/8 HIGH,
GOTHIC, WITH
LATEST REV. LETTER



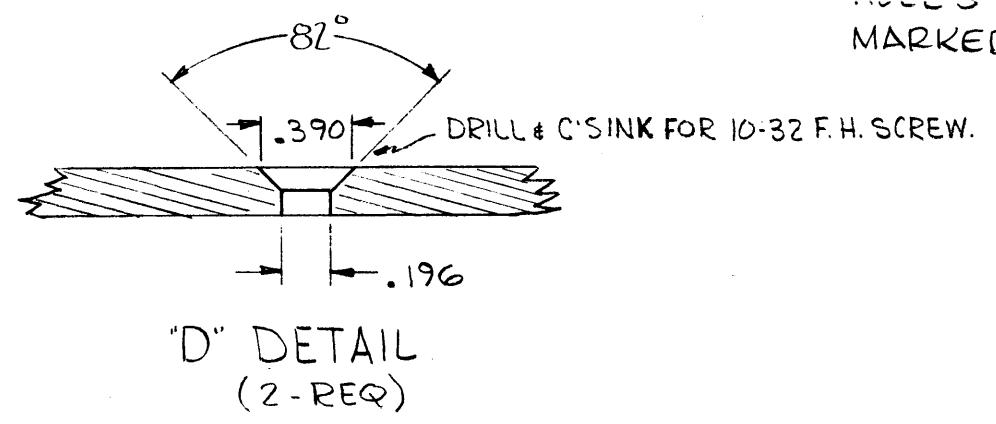
MS 3082 C

REVISIONS					
SYM	DESCRIPTION	DATE	E.M.N. NO.	DRAFT	CHKD APPD
A	ONE "D" HOLE RELOCATED	12.10.64	13095	MS	MS
B	DELE IT. 2. HOLE "A" WAS .253-.250 DIA.	8-25-66	16786	RME	MS
C	QTY. OF "D" HOLES WAS 2. ADD P/N CHART. MARKED EXISTING "D" HOLES * ADD 2 "D" HOLE	9-20-66	16855	RME	MS

LEGEND		
HOLE	DESCRIPTION	REQ.
A	15/64 DIA.	4
B	9/32 DIA.	1
C	.347-.344	4
D	SEE DETAIL	SEE * CHART

PART NO.	"D" HOLES
MS 3082	* 2
MS 3082-2	4

* NOTE ON MS 3082 ONLY "D" HOLES MARKED * APPLY.
ON MS 3082-2 ALL "D" HOLES INCLUDING ONES MARKED * APPLY.



MOUNT ITEM (1) IN ALL "C" HOLES AS SHOWN AFTER FINISHING.

REQ'D.	ITEM	PART NUMBER	DESCRIPTION	SYMBOL
4	1	NT-129-420-6	NUT, ROUND, SWAGE TYPE	C

MATERIAL		THE TECHNICAL MATERIEL CORP. MAMARONECK, NEW YORK	
1/8, ALUMINUM		TITLE PLATE, CONN. MTG.	
FINISH S404 IRIDITE	TYPE & TEMPER 5052-H32	DRAWN G. Jensen	DATE 2-4-63
UNLESS OTHERWISE SPECIFIED DIMENSIONS ARE IN INCHES AND INCLUDE CHEMICALLY APPLIED OR PLATED FINISHES		CHECKED MS	DATE
DECIMALS .X ± .05 .XX ± .01 .XXX ± .005		ELECT. DES. MS	DATE
FRACTIONS ± 1/64 ANGLES ± 0° 30'		MECH. DES. MS	DATE 2/11/63
TOLERANCES		FINAL APPROVAL BP	
		DATE	
		MS 3082	
		C	
		SHEET	
		REV. LTR.	

Q'TY./UNIT	MODEL USED ON	ASS'Y. NO.
1	TER-500-704	A-1475-1
1	TER-3500-704	A-1475-2
SCALE	CODE	

THE CONTENTS OF THIS DRAWING ARE THE EXCLUSIVE PROPERTY OF THE TECHNICAL MATERIEL CORP. ITS UNAUTHORIZED USE OR REPRODUCTION IN WHOLE OR IN PART IS STRICTLY FORBIDDEN.

NOTES