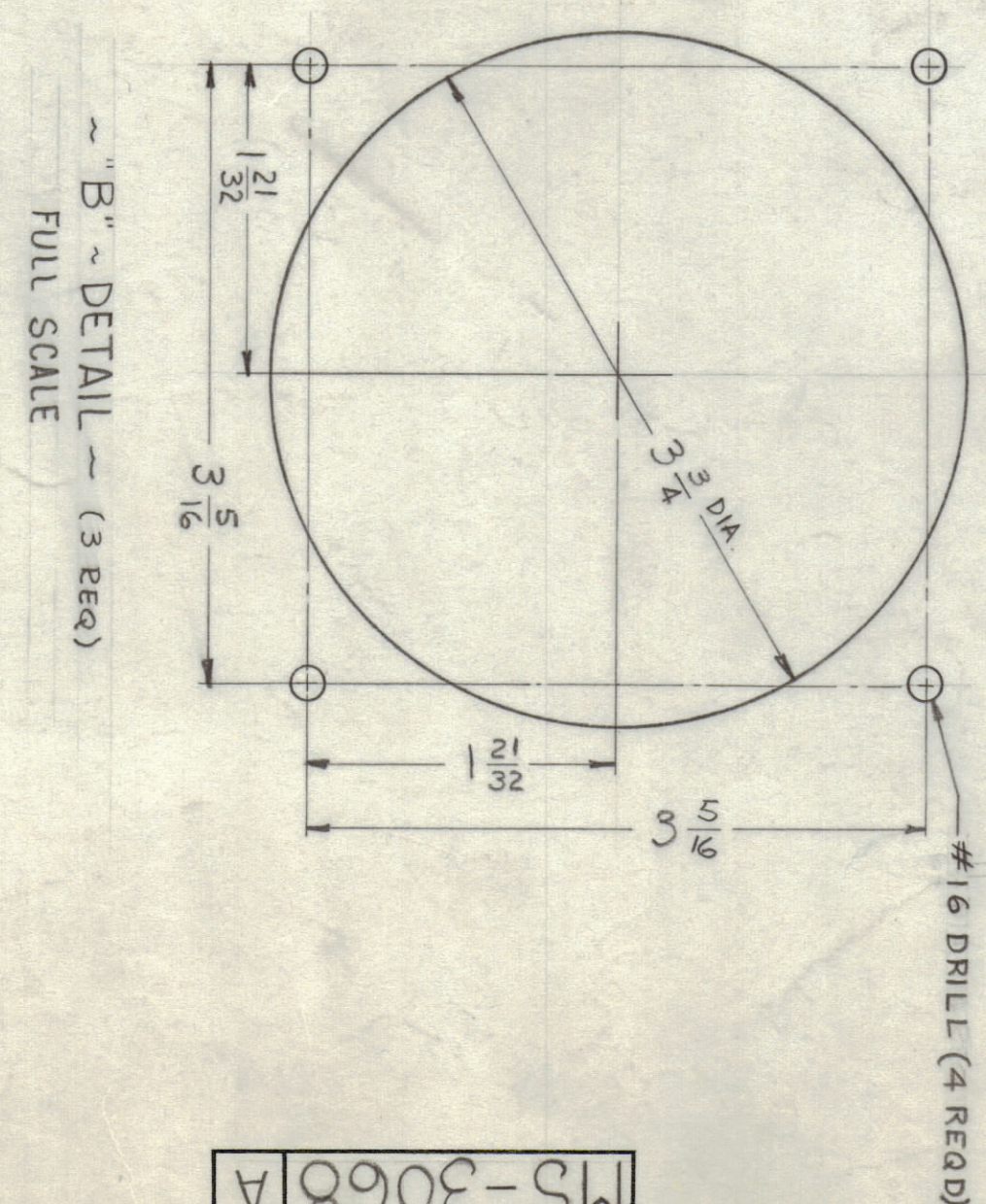
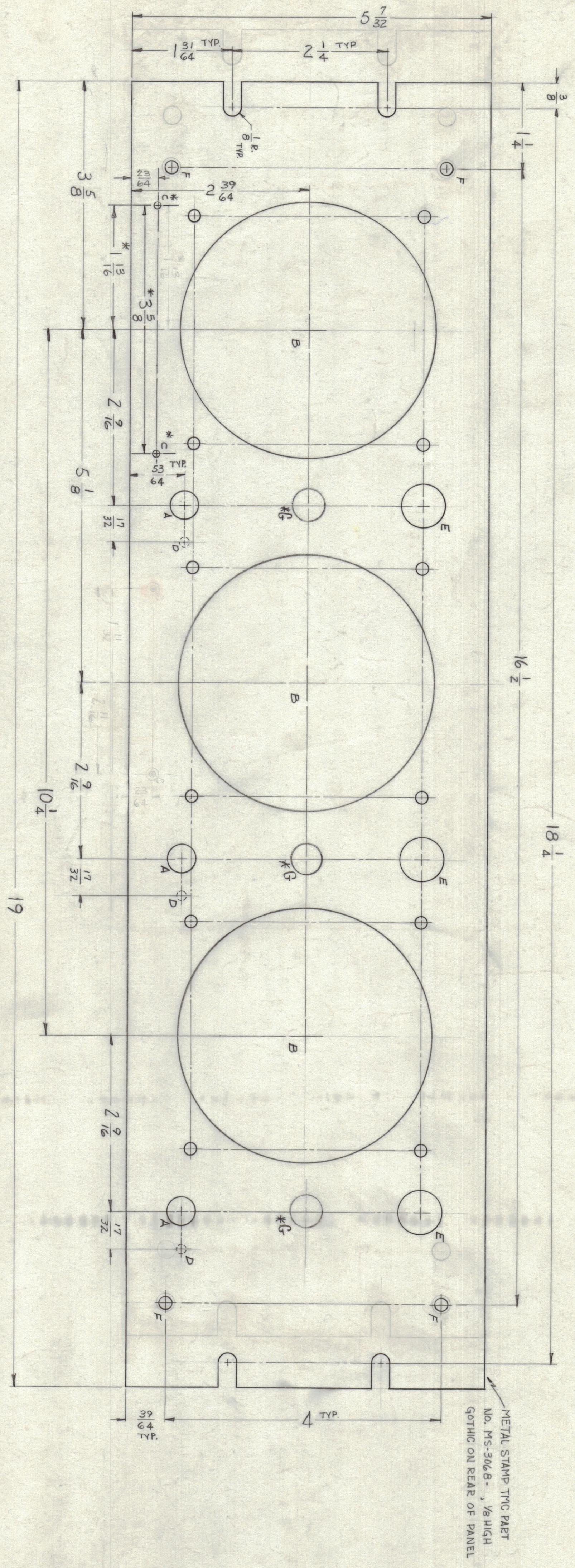


NOTICE TO PERSONS RECEIVING THIS DRAWING
 THE TECHNICAL MATERIAL CORPORATION claims proprietary right in the material disclosed herein. This drawing is issued in confidence and is to be used for information only and may not be reproduced or used in any way without the written consent of the manufacturer. Any use of this drawing without the permission of the TECHNICAL MATERIAL CORPORATION is prohibited. This drawing is issued for your assistance and is subject to recall at any time.
 Property of:
 THE TECHNICAL MATERIAL CORPORATION
 MAMARONECK, NEW YORK



HOLE	DESCRIPTION	REQ.
A	.390 DIA.	3
B	SEE DETAIL	3
*C	#47 DRILL (NOTE 2)	2
*D	(SEE NOTE 1)	3
E	5/8 DIA.	3
F	#7 DRILL	4
*G	15/32 DIA (NOTE 3)	3

* NOTE 1.
 (3) "D" HOLES, 1/8 DIA. TO BE DRILLED FROM REAR OF PANEL, 1/8" DEEP.
 NOTE 2.
 INTERNAL USE ONLY. DO NOT DRILL "C" HOLES UNLESS SPECIFIED BY TMC.
 NOTE 3.
 "G" HOLES FOR MS-3066-1 ONLY.

~MACHINING~
 1 ~ LATERAL BOW OF PANEL MUST BE KEPT WITHIN 1/32.
 2 ~ MILL ALL EDGES.
 3 ~ HOLES MUST BE DRILLED.
 4 ~ PANEL MUST BE FREE OF ALL MACHINING MARKS, GOUGES & SCRATCHES IF NECESSARY SAND FRONT OF PANEL WITH NO. 120 SANDPAPER.

FINISH NOTES:
 S404 ~ YELLOW IRIDIUM.
 S114 ~ ZINC CHROMATE PRIMER.
 S115 ~ SMOOTH GRAY ENAMEL.
 FINISH FRONT & EDGES ONLY.

REF: LD-1176 (4) (2 - SHEETS)

REV.	DATE	BY	CHKD.	APP'D.
1	12/17/64	MS-3066	AW	AW
2	1/17/65	MS-3066	AW	AW
3	1/17/65	MS-3066	AW	AW
4	1/17/65	MS-3066	AW	AW

REV.	DATE	BY	CHKD.	APP'D.
1	12/17/64	MS-3066	AW	AW
2	1/17/65	MS-3066	AW	AW
3	1/17/65	MS-3066	AW	AW
4	1/17/65	MS-3066	AW	AW

ZONE	SYM.	DESCRIPTION	DATE	E.M.N. NO.	DRAWN	CHKD.	APP'D.
A		RELOCATE "C" HOLES, CHG DIM. & ADD NOTE 2	1/17/65	21650	AW	AW	AW
B		ADD "C" HOLES FOR BSP-3P (A1)	8-5-64		AW	AW	AW

REV.	DATE	BY	CHKD.	APP'D.
1	12/17/64	MS-3066	AW	AW
2	1/17/65	MS-3066	AW	AW
3	1/17/65	MS-3066	AW	AW
4	1/17/65	MS-3066	AW	AW