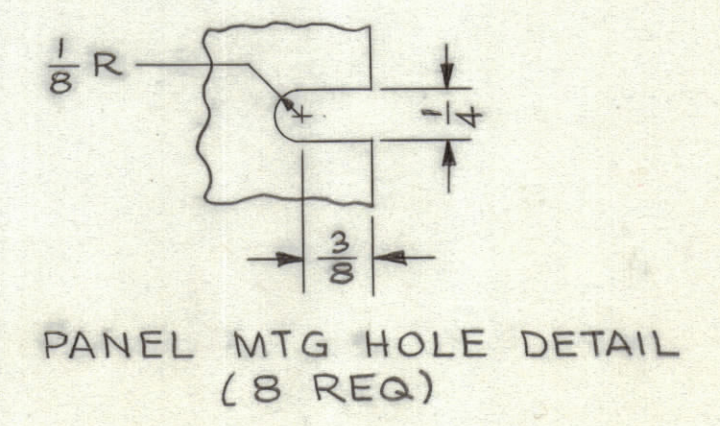
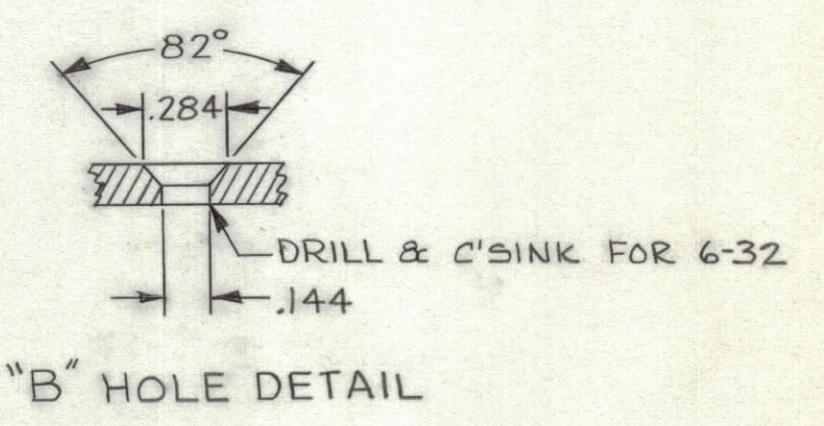
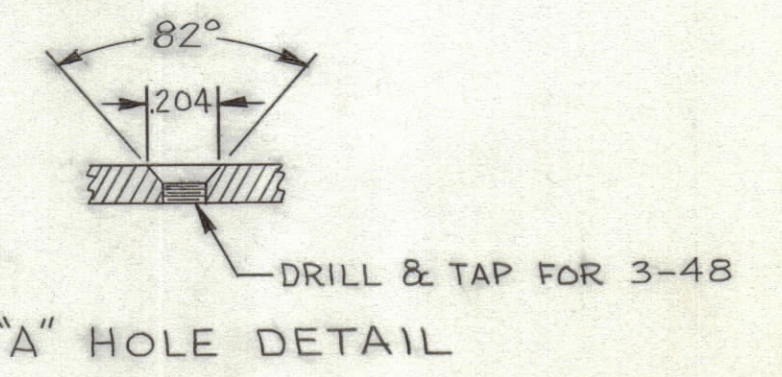


HOLE	DESCRIPTION	REQ
A	SEE DETAIL C'SINK	30
B	SEE DETAIL C'SINK	12
C	13/16 DIA.	50
D	.0785 DIA.	3



- MACHINING NOTES:**
- LATERAL BOW OF PANEL MUST BE KEPT .031 TOLERANCE.
 - MILL ALL EDGES.
 - HOLES MUST BE FREE OF ALL MACHINING MARKS, GOUGES AND SCRATCHES IF NECESSARY SAND FRONT OF PANEL WITH NO. 120 GRIT SANDPAPER.

- FINISHING NOTES:**
- S 404 IRIDITE
 - S 114 ZINC CHROMATE PRIMER
 - S 115 TMC SMOOTH GRAY ENAMEL OR PRIME AND PAINT TO CUSTOMER SPEC.
- FRONT AND EDGES ONLY

METAL STAMP TMC PART NO. 3044 1/8 HIGH BLACK GOTHIC ON REAR OF PANEL.

NOTE:
1. TOLERANCE ARE NOT ACCUMULATIVE

NOTICE TO PERSONS RECEIVING THIS DRAWING

THE TECHNICAL MATERIEL CORPORATION claims proprietary right in the material disclosed hereon. This drawing is issued in confidence or engineering information only and may not be reproduced or used to manufacture anything shown hereon without permission from THE TECHNICAL MATERIEL CORPORATION to the user. This drawing is loaned for mutual assistance and is subject to recall at any time.

Property of:
THE TECHNICAL MATERIEL CORPORATION
MAMARONECK, NEW YORK

NOTES

QTY./UNIT	MODEL USED ON	ASS'Y. NO.
DO NOT SCALE	S401-184	

THE CONTENTS OF THIS DRAWING ARE THE EXCLUSIVE PROPERTY OF THE TECHNICAL MATERIEL CORP. ITS UNAUTHORIZED USE OR REPRODUCTION IN WHOLE OR IN PART IS STRICTLY FORBIDDEN.

REQ'D.	ITEM	PART NUMBER	DESCRIPTION	SYMBOL
MARTINENGO LIST OF MATERIAL				
MATERIAL		THE TECHNICAL MATERIEL CORP. MAMARONECK, NEW YORK		
3/16 ALUMINUM 2024-T3		TITLE PANEL, FRONT MACHINING		
FINISH		DRAWN M. TANTILLO		
SEE FINISHING NOTES		CHECKED [Signature]		
UNLESS OTHERWISE SPECIFIED DIMENSIONS ARE IN INCHES AND INCLUDE CHEMICALLY APPLIED OR PLATED FINISHES		DATE 11-20-62		
DECIMALS .X ± .05 .XX ± .01 .XXX ± .005		FRACTIONS ± 1/64 ANGLES ± 0° 30'		FINAL APPROVAL [Signature]
TOLERANCES		DATE 12-10-62		
		MECH. DES. [Signature]		
		DATE 12/10/62		
		SHEET		
		MS-3044		
		REV. LTR.		

MS-3044