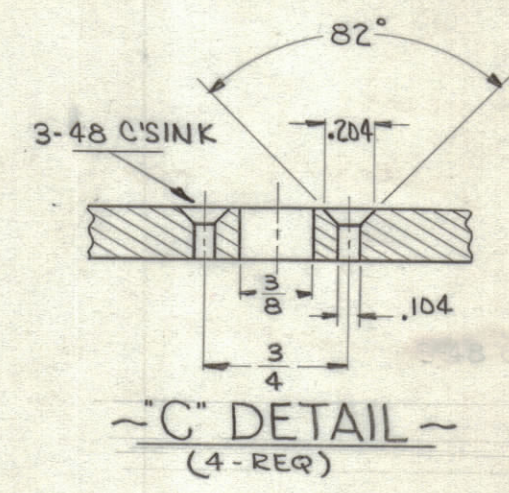
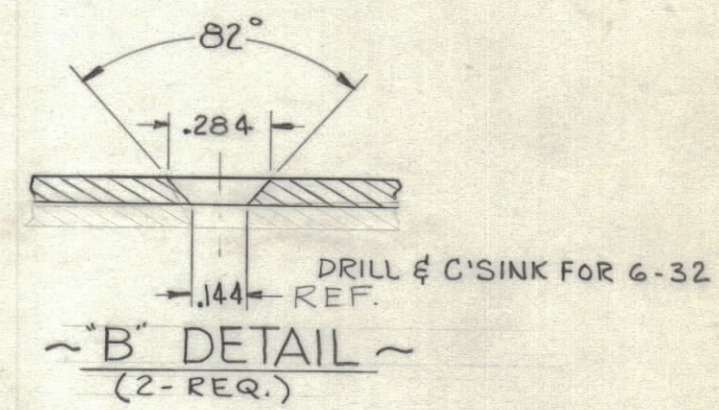
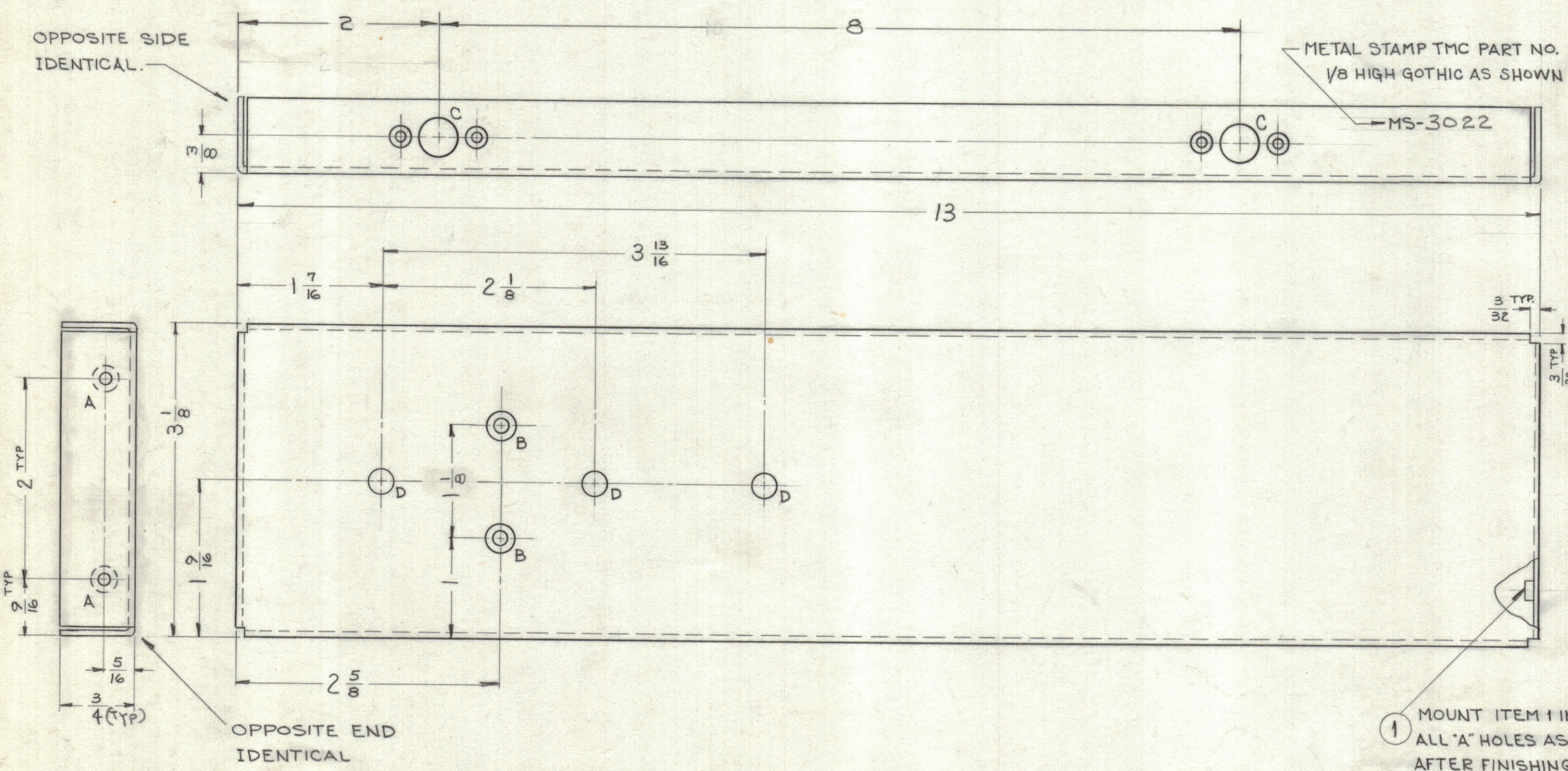


REVISIONS							
ZONE	SYM	DESCRIPTION	DATE	E.M.N. NO.	DRAFT	CHKD	APPD

LEGEND		
HOLE	DESCRIPTION	REQ.
A	.191-.194 DIA.	4
B	SEE C'SINK DETAIL	2
C	SEE DETAIL	4
D	.234 DIA.	3



MS-3022

NOTICE TO PERSONS RECEIVING THIS DRAWING

THE TECHNICAL MATERIEL CORPORATION claims proprietary right in the material disclosed hereon. This drawing is issued in confidence for engineering information only and may not be reproduced or used to manufacture anything shown hereon without permission from THE TECHNICAL MATERIEL CORPORATION to the user. This drawing is loaned for mutual assistance and is subject to recall at any time.

Property of:
THE TECHNICAL MATERIEL CORPORATION
MAMARONECK, NEW YORK

MOUNT INSERTS AFTER FINISHING
USE MATERIAL THICKNESS FOR MAX. RADIUS
ON ALL BENDS UNLESS OTHERWISE SPECIFIED

NOTES

Q'TY./UNIT	MODEL USED ON	ASS'Y. NO.
1	SPU-2	
SCALE	CODE	

THE CONTENTS OF THIS DRAWING ARE THE EXCLUSIVE PROPERTY OF THE TECHNICAL MATERIEL CORP. ITS UNAUTHORIZED USE OR REPRODUCTION IN WHOLE OR IN PART IS STRICTLY FORBIDDEN.

REQ'D.	ITEM	PART NUMBER	DESCRIPTION	SYMBOL
4	1	NT-129-632-4	NUT, ROUND, SWAGE TYPE	A
STRUMMER LIST OF MATERIAL				
MATERIAL			THE TECHNICAL MATERIEL CORP.	
.064 ALUMINUM			MAMARONECK, NEW YORK	
5052-H32			TITLE	
FINISH			PLATE, RIGHT SIDE	
S404 YELLOW IRIDITE			DRAWN	
UNLESS OTHERWISE SPECIFIED			G. SANCER	
DIMENSIONS ARE IN INCHES AND INCLUDE			DATE 8-27-62	
CHEMICALLY APPLIED OR PLATED FINISHES			CHECKED	
DECIMALS			DATE 10/16/62	
.X ± .05			ELECT. DES.	
.XX ± .01			DATE 11-27-62	
.XXX ± .005			MECH. DES.	
TOLERANCES			DATE 11-27-62	
± 1/64			SHEET	
ANGLES			MS-3022	
± 0° 30'			REV. LTR.	