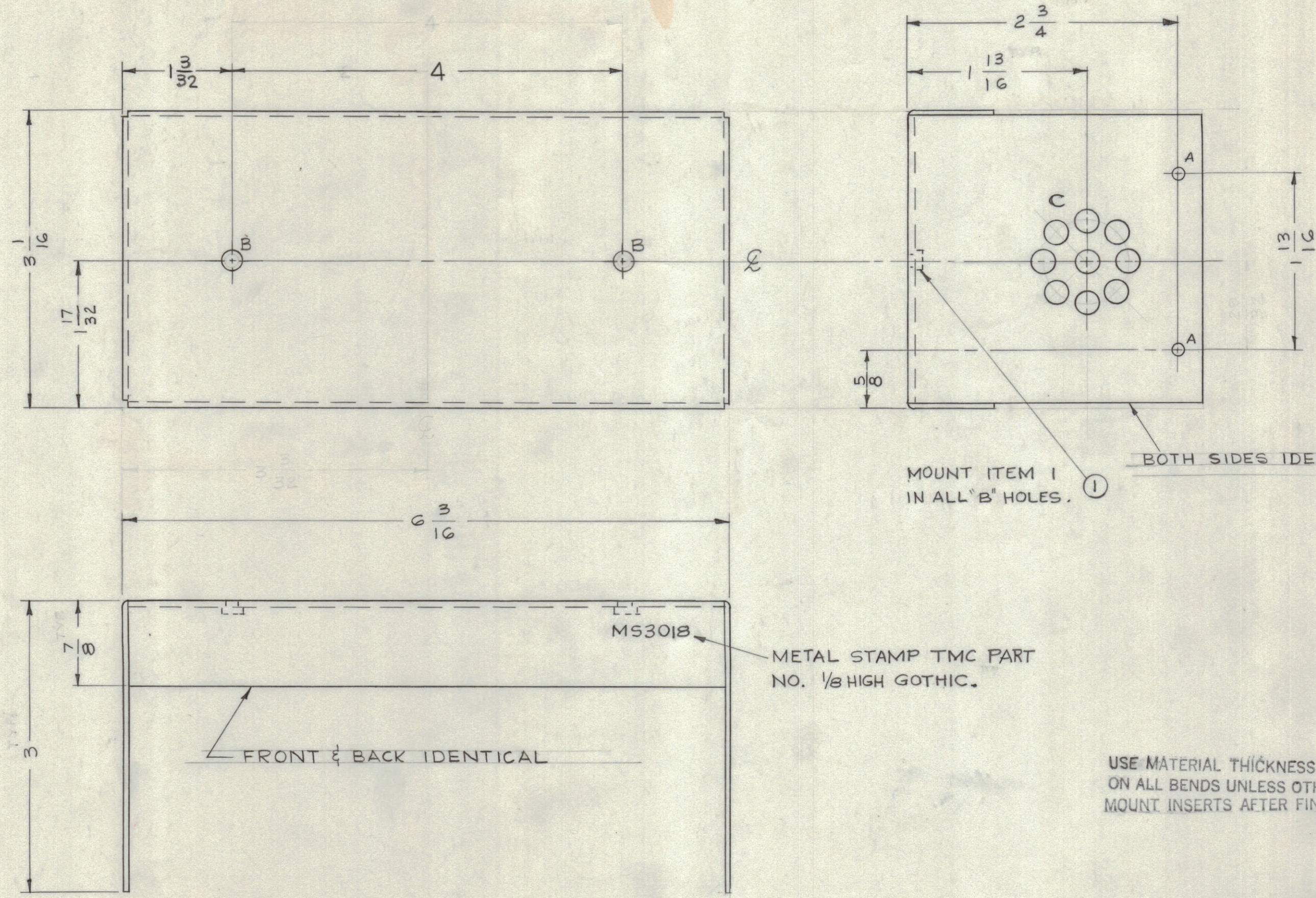
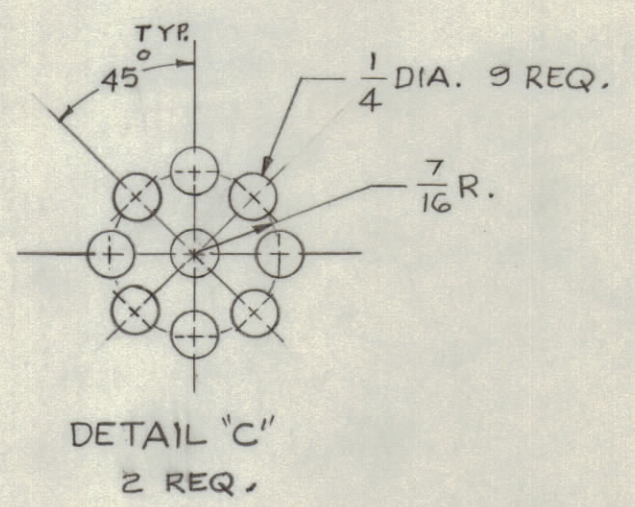


REVISIONS							
ZONE	SYM	DESCRIPTION	DATE	E.M.N. NO.	DRAFT	CHKD	APPD



LEGEND		
HOLE	DESCRIPTION	REQ.
A	1/8 DIA.	4
B	.224 - .221 DIA.	2



METAL STAMP TMC PART NO. 1/8 HIGH GOTHIC.

USE MATERIAL THICKNESS FOR MAX. RADIUS ON ALL BENDS UNLESS OTHERWISE SPECIFIED MOUNT INSERTS AFTER FINISHING

NOTICE TO PERSONS RECEIVING THIS DRAWING

THE TECHNICAL MATERIEL CORPORATION claims proprietary right in the material disclosed hereon. This drawing is issued in confidence for engineering information only and may not be reproduced or used to manufacture anything shown hereon without permission from THE TECHNICAL MATERIEL CORPORATION to the user. This drawing is loaned for mutual assistance and is subject to recall at any time.

Property of:
THE TECHNICAL MATERIEL CORPORATION
MAMARONECK, NEW YORK

Q'TY./UNIT	MODEL USED ON	ASS'Y. NO.
1	KIT-155	

THE CONTENTS OF THIS DRAWING ARE THE EXCLUSIVE PROPERTY OF THE TECHNICAL MATERIEL CORP. ITS UNAUTHORIZED USE OR REPRODUCTION IN WHOLE OR IN PART IS STRICTLY FORBIDDEN.

REQ'D.	ITEM	PART NUMBER	DESCRIPTION	SYMBOL
2	1	NT-129-832-4	NUT, ROUND SWAGE TYPE	

J. STRUMER LIST OF MATERIAL

MATERIAL	TITLE
.064 THICK 5052-H32 ALUMINUM	COVER CHASSIS MAIN
FINISH 6404-YEL IRIDITE	

THE TECHNICAL MATERIEL CORP.	MAMARONECK, NEW YORK
DRAWN W.S.	DATE 9/16/62
CHECKED	DATE 4/1/63
ELECT. DES.	DATE
MECH. DES.	DATE

FINAL APPROVAL [Signature] DATE []

MS-3018 SHEET [] REV. LTR. []

NOTES

MS-3018