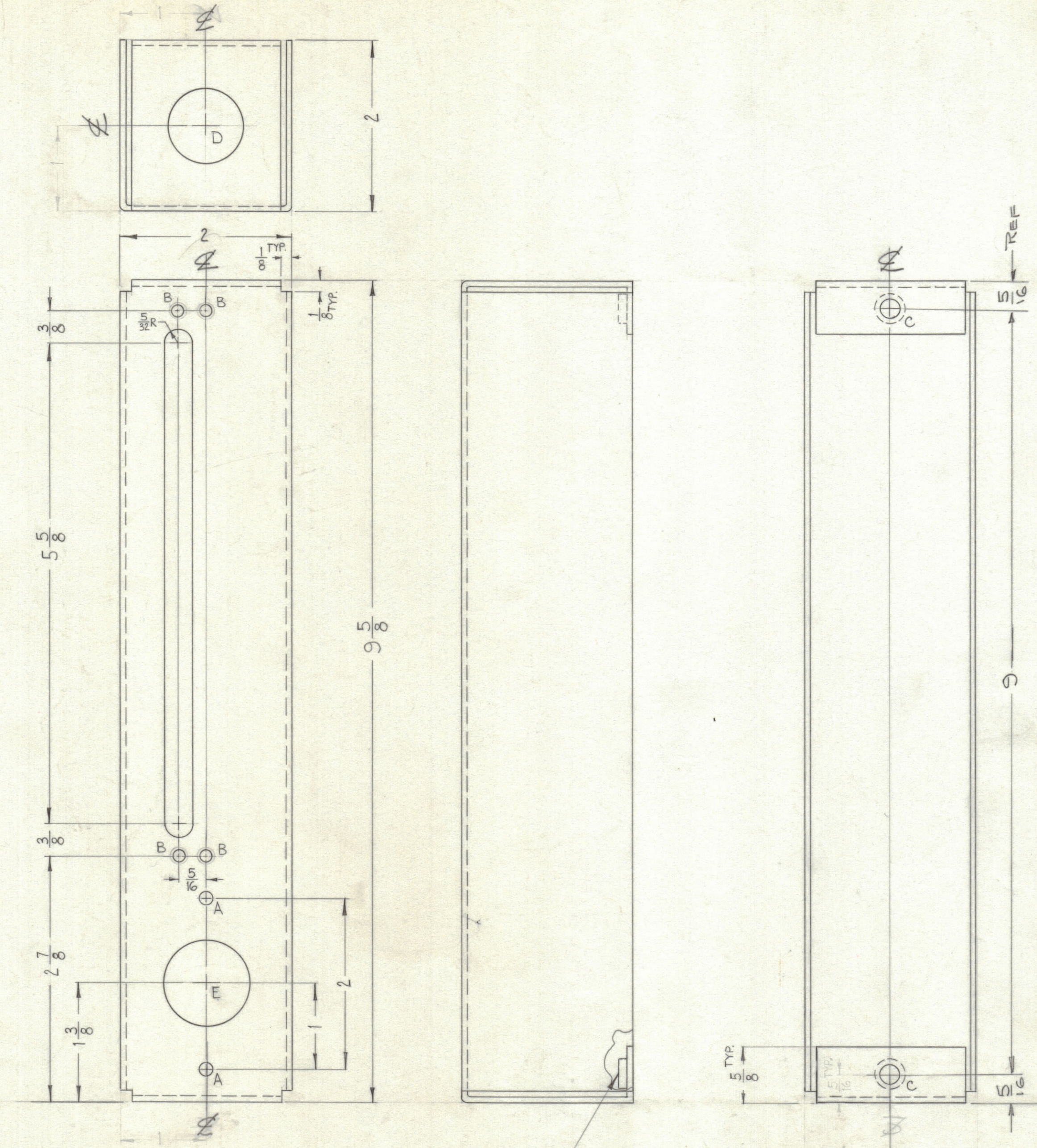


| REVISIONS |     |                 |         |            |       |      |       |
|-----------|-----|-----------------|---------|------------|-------|------|-------|
| ZONE      | SYM | DESCRIPTION     | DATE    | E.M.N. NO. | DRAFT | CHKD | APPD. |
| 7/8       | A   | B HOLE WAS 3/16 | 8-30-62 | 7157       | SG    |      |       |



| LEGEND |                  |      |
|--------|------------------|------|
| HOLE   | DESCRIPTION      | REQ. |
| A      | 5/32 DIA.        | 2    |
| B      | 1/8 DIA.         | 4    |
| C      | .191 - .194 DIA. | 2    |
| D      | 7/8 DIA.         | 1    |
| E      | 1 DIA.           | 1    |

**NOTICE TO PERSONS RECEIVING THIS DRAWING**

THE TECHNICAL MATERIEL CORPORATION claims proprietary right in the material disclosed hereon. This drawing is issued in confidence for engineering information only and may not be reproduced or used to manufacture anything shown hereon without permission from THE TECHNICAL MATERIEL CORPORATION to the user. This drawing is loaned for mutual assistance and is subject to recall at any time.

Property of:  
**THE TECHNICAL MATERIEL CORPORATION**  
 MAMARONECK, NEW YORK

① MOUNT ITEM 1 IN ALL "C" HOLES AS SHOWN AFTER FINISHING.

REF: LD-1137 (2)

|                              |             |                                     |                        |                |
|------------------------------|-------------|-------------------------------------|------------------------|----------------|
| 2                            | 1           | NT-129-632-4                        | NUT, ROUND, SWAGE TYPE | C              |
| R. KOHN LIST OF MATERIAL     |             |                                     |                        |                |
| MATERIAL                     |             | .064 THK. ALUMINUM 5052-H32         |                        |                |
| FINISH                       |             | 5404 YELLOW IRIDITE                 |                        |                |
| THE TECHNICAL MATERIEL CORP. |             | MAMARONECK, NEW YORK                |                        |                |
| TITLE                        |             | CHASSIS, AF. OUTPUT & ANTENNA INPUT |                        |                |
| DRAWN                        | W.A. Franco | DATE                                | 8-6-62                 | FINAL APPROVAL |
| CHECKED                      | <i>File</i> | DATE                                | 8-16-62                | <i>BP</i>      |
| ELECT. DES.                  | RKohn       | DATE                                | 8/16/62                | MS-3004        |
| MECH. DES.                   | RKohn       | DATE                                | 8/16/62                | A              |
|                              |             |                                     |                        | REV. LTR.      |

|   |               |            |
|---|---------------|------------|
| QTY./UNIT   | MODEL USED ON | ASS'Y. NO. |
| SCALE   | CODE          |            |
| FULL (Do Not Scale)   |               |            |
| THE CONTENTS OF THIS DRAWING ARE THE EXCLUSIVE PROPERTY OF THE TECHNICAL MATERIEL CORP. ITS UNAUTHORIZED USE OR REPRODUCTION IN WHOLE OR IN PART IS STRICTLY FORBIDDEN. |               |            |

**NOTES**

MS-3004  
A

