

REVISIONS							
ZONE	SYM	DESCRIPTION	DATE	E.M.N. NO.	DRAFT	CHKD	APPD

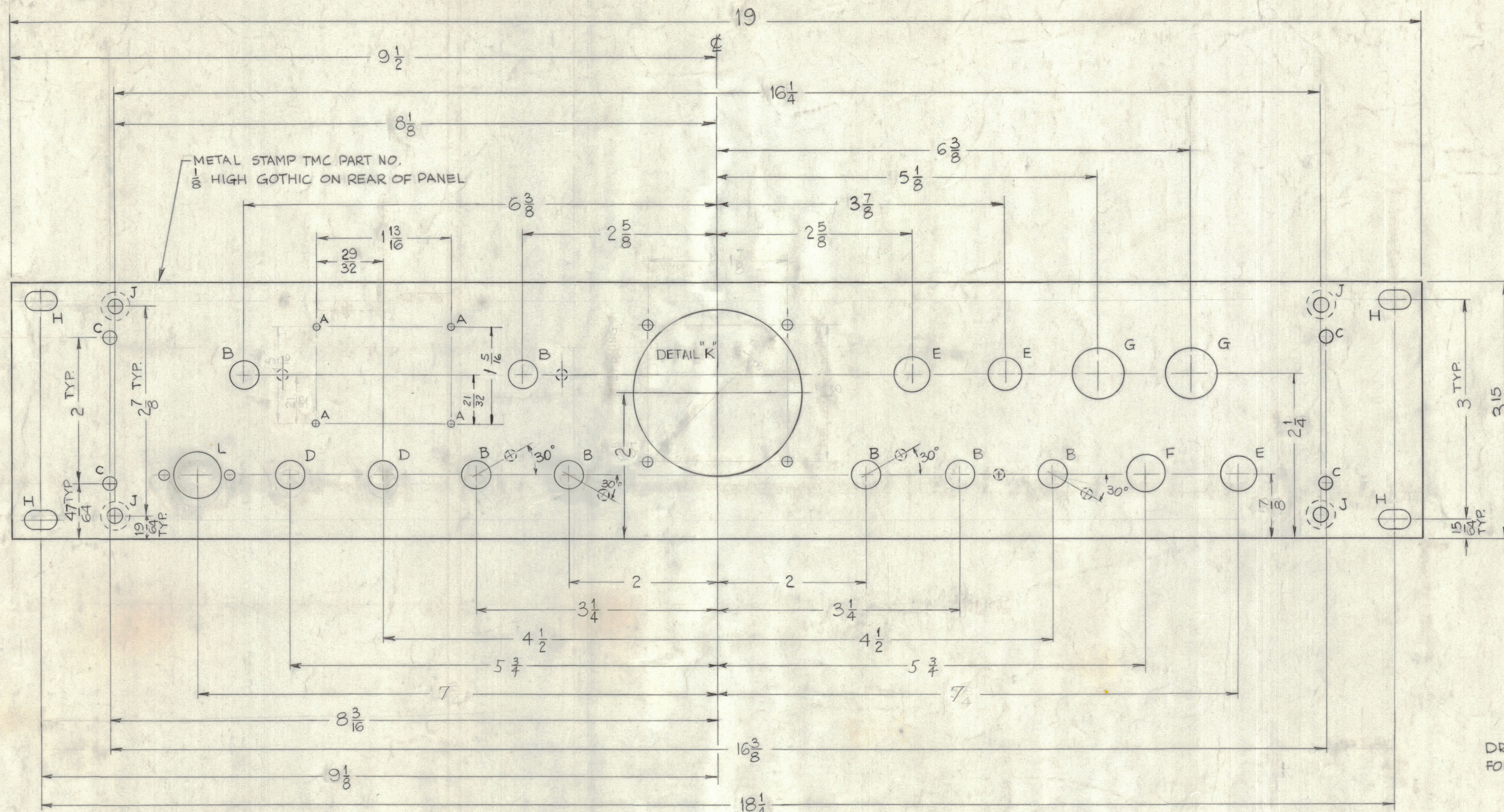
NOTICE TO PERSONS RECEIVING THIS DRAWING

THE TECHNICAL MATERIEL CORPORATION claims proprietary right in the material disclosed hereon. This drawing is issued in confidence for engineering information only and may not be reproduced or used to manufacture anything shown hereon without permission from THE TECHNICAL MATERIEL CORPORATION to the user. This drawing is loaned for mutual assistance and is subject to recall at any time.

Property of:

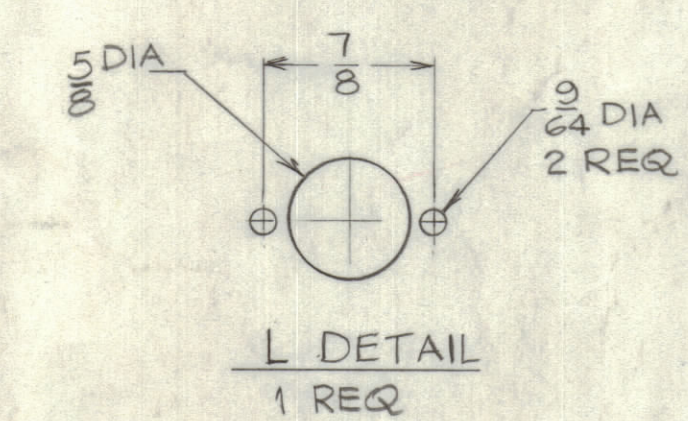
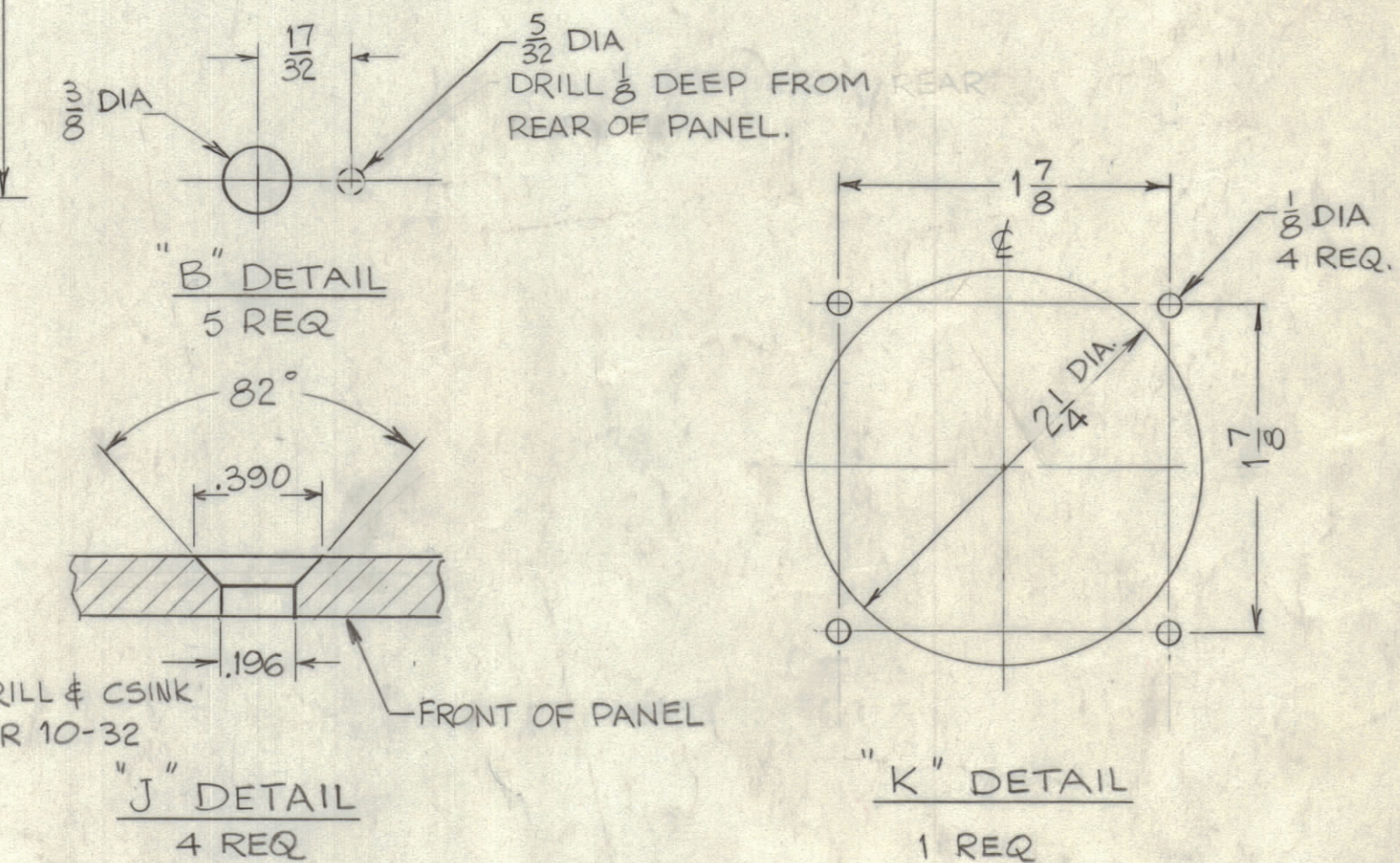
THE TECHNICAL MATERIEL CORPORATION
MAMARONECK, NEW YORK

TOP



LEGEND

HOLE	DESCRIPTION	REQ.
A	.076 DIA	4
B	SEE DETAIL	7
C	1/64 DIA	4
D	3/8 DIA.	2
E	15/32 DIA	3
F	1/2 DIA.	1
G	1/16 DIA.	2
H	1/4 x 1/16 SLOT	4
J	SEE C'SINK DETAIL	4
K	SEE DETAIL	1
L	SEE DETAIL	1



FRONT OF PANEL SHOWN

- MACHINING:-
- 1-LATERAL BOW OF PANEL MUST BE KEPT TO .031 TOL.
 - 2-MILL ALL EDGES.
 - 3-HOLES MUST BE DRILLED
 - 4-ALL THREADED HOLES & HOLE DIA. MUST BE HELD AFTER ETCHING.
 - 5-PANEL MUST BE FREE OF ALL MACHINING MARKS, GOUGES & SCRATCHES, IF NECESSARY SAND FRONT WITH NO. 120 GRIT SANDPAPER.

- FINISH:-
- S404 - YELLOW IRIDITE
 - S114 - ZINC CHROMATE PRIMER
 - S115 - TMC SMOOTH GREY ENAMEL
- FRONT & EDGES ONLY
OR
PRIME & PAINT PER CUSTOMER

MS-3003

REF: LD-1135

REQ'D.	ITEM	PART NUMBER	DESCRIPTION	SYMBOL
			STRUMMER	
LIST OF MATERIAL				
MATERIAL			THE TECHNICAL MATERIEL CORP. MAMARONECK, NEW YORK	
3/16 ALUMINUM			TITLE	
2024-T3			PANEL, FRONT, MACHINING SPU-2	
FINISH			DATE	FINAL APPROVAL
UNLESS OTHERWISE SPECIFIED DIMENSIONS ARE IN INCHES AND INCLUDE CHEMICALLY APPLIED OR PLATED FINISHES			3-2-62	MA BP
DRAWN			DATE	DATE
V.K.R.			11-27-62	11-27-62
CHECKED			DATE	DATE
A.P.			11-27-62	11-27-62
ELECT. DES.			DATE	DATE
M.E.H.			11-27-62	11-27-62
MECH. DES.			DATE	DATE
M.E.H.			11-27-62	11-27-62
SHEET			MS-3003	REV. LTR.

NOTES

1	SPU-2	ASSY. NO.
SCALE	CODE	
THE CONTENTS OF THIS DRAWING ARE THE EXCLUSIVE PROPERTY OF THE TECHNICAL MATERIEL CORP. ITS UNAUTHORIZED USE OR REPRODUCTION IN WHOLE OR IN PART IS STRICTLY FORBIDDEN.		

DECIMALS	FRACTIONS	ANGLES
.x ± .05 .xx ± .01 .xxx ± .005	± 1/64 ± 0° 30'	