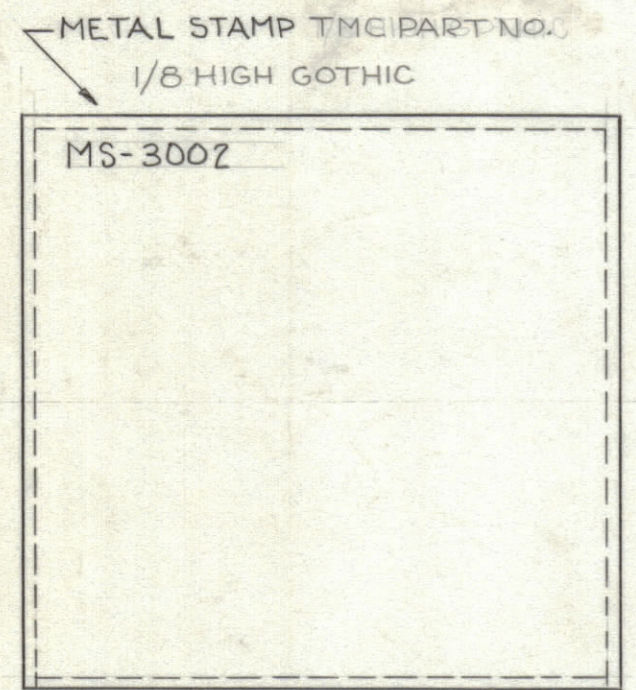
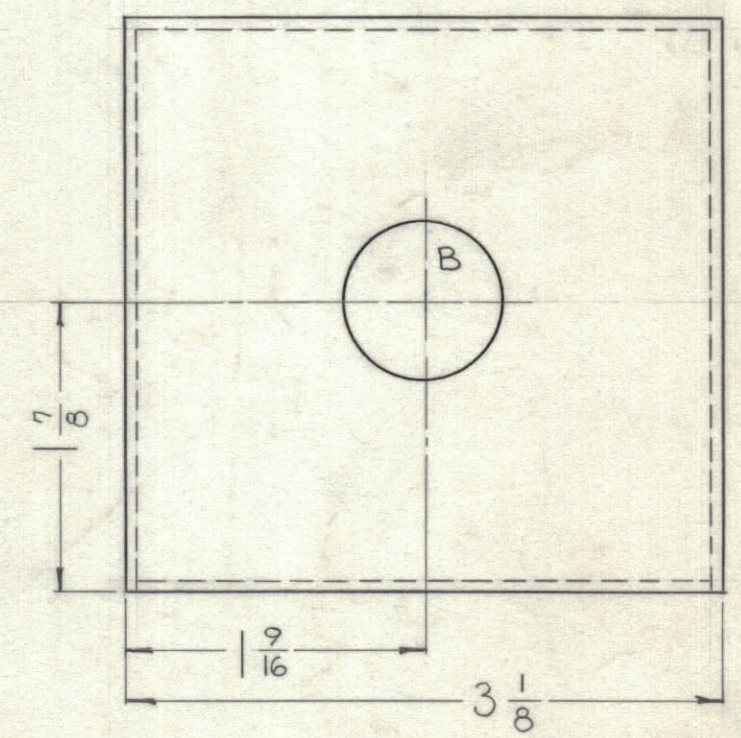
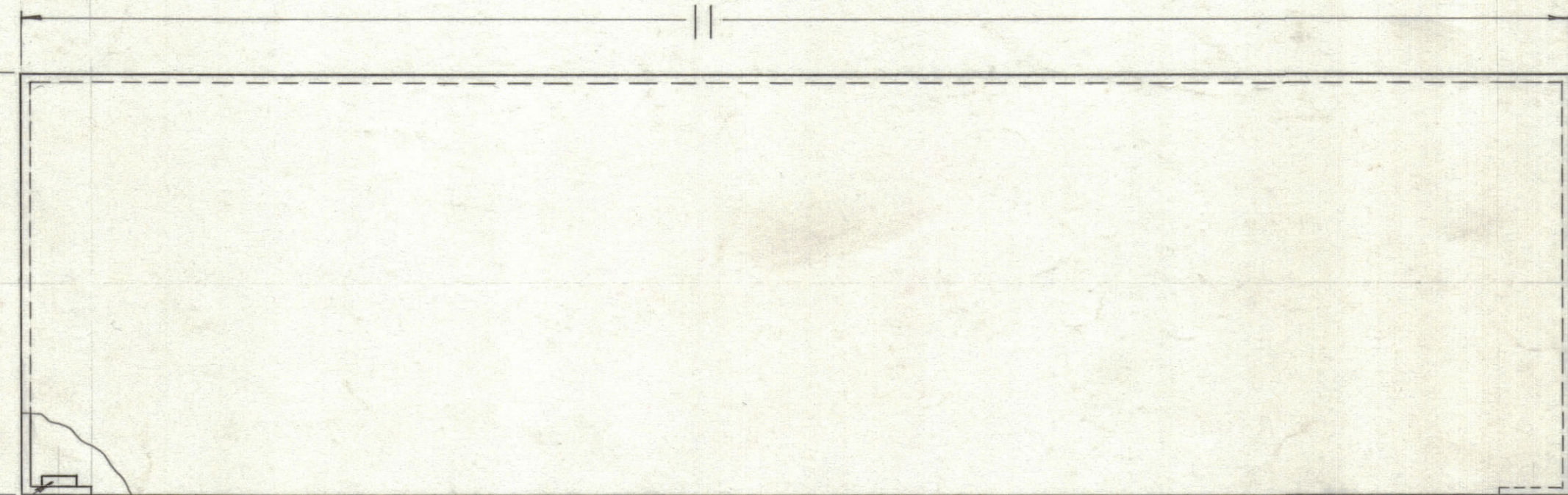
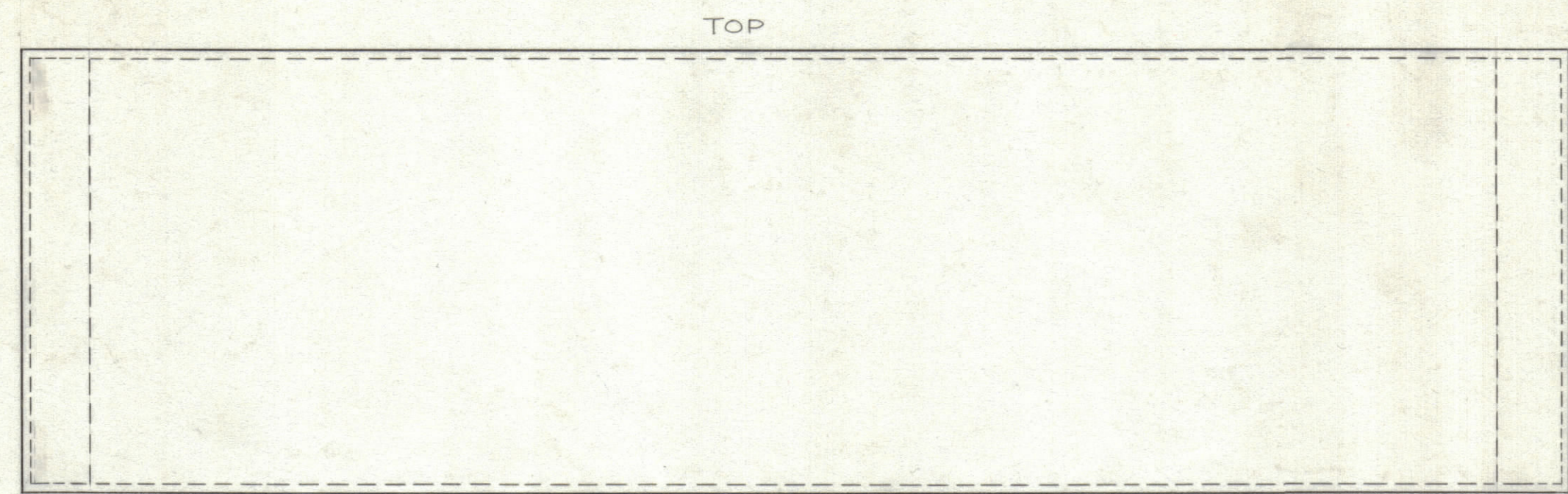


NOTICE TO PERSONS RECEIVING THIS DRAWING

THE TECHNICAL MATERIEL CORPORATION claims proprietary right in the material disclosed hereon. This drawing is issued in confidence for engineering information only and may not be reproduced or used to manufacture anything shown hereon without permission from THE TECHNICAL MATERIEL CORPORATION to the user. This drawing is loaned for mutual assistance and is subject to recall at any time.

Property of:
THE TECHNICAL MATERIEL CORPORATION
MAMARONECK, NEW YORK

REVISIONS						
ZONE	SYM	DESCRIPTION	DATE	E.M.N. NO.	DRAFT	CHKD APPD



MOUNT ITEM "A" IN ALL "A" HOLES AS SHOWN.

LEGEND		
HOLE	DESCRIPTION	REQ.
A	.191 DIA.	4
B	13/16 DIA.	1

4	1	NT-129-G32-4	NUT, ROUND, SWAGE TYPE	
REQ'D.	ITEM	PART NUMBER	DESCRIPTION	SYMBOL
R. KOHN LIST OF MATERIAL				
MATERIAL			THE TECHNICAL MATERIEL CORP.	
.064 ALUMINUM 5082-H32			MAMARONECK, NEW YORK	
FINISH			TITLE	
3404 YEL IRIDITE			COVER, BOX	
Q'TY./UNIT		MODEL USED ON	ASS'Y. NO.	DATE
1		HPP-1		7-23-62
SCALE		CODE		DATE
DO NOT SCALE				8-14-62
UNLESS OTHERWISE SPECIFIED DIMENSIONS ARE IN INCHES AND INCLUDE CHEMICALLY APPLIED OR PLATED FINISHES			ELECT. DES.	DATE
			R. KOHN	27 JUL 62
DECIMALS			MECH. DES.	DATE
X ± .05			R. KOHN	27 JUL 62
XX ± .01				
XXX ± .005				
TOLERANCES				
FRACTIONS ± 1/64				
ANGLES ± 0° 30'				
THE CONTENTS OF THIS DRAWING ARE THE EXCLUSIVE PROPERTY OF THE TECHNICAL MATERIEL CORP. ITS UNAUTHORIZED USE OR REPRODUCTION IN WHOLE OR IN PART IS STRICTLY FORBIDDEN.				REV. LTR.

NOTES

MS-3002