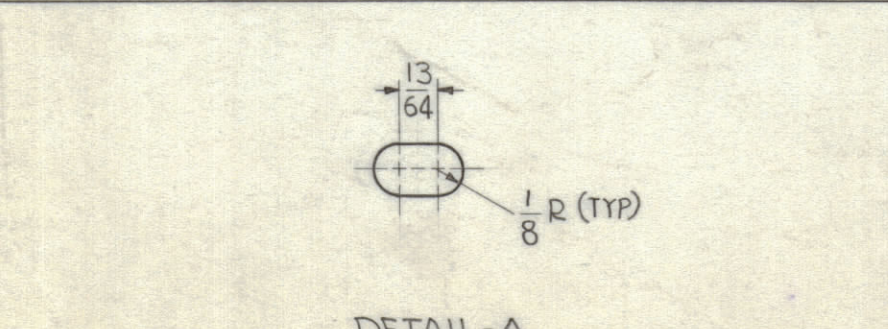
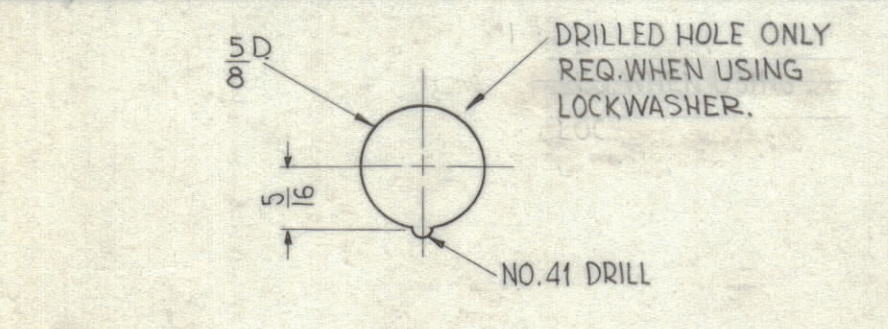
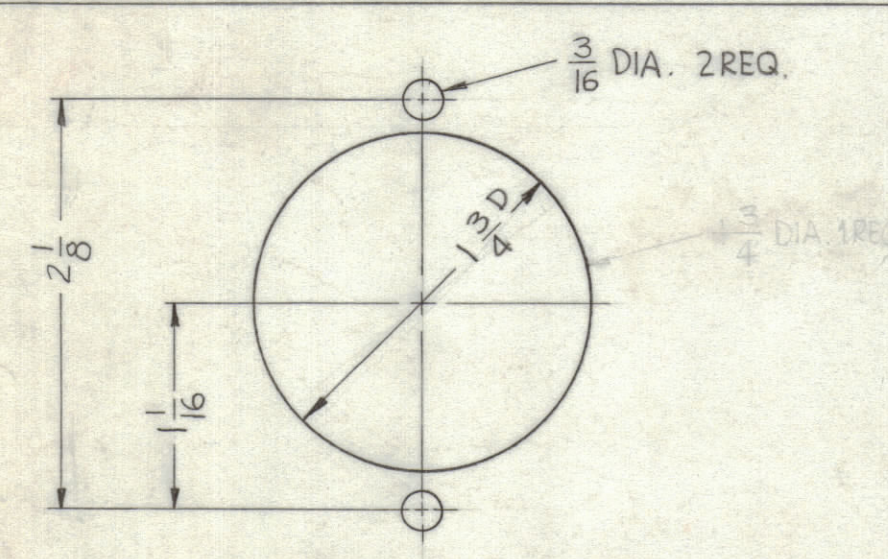
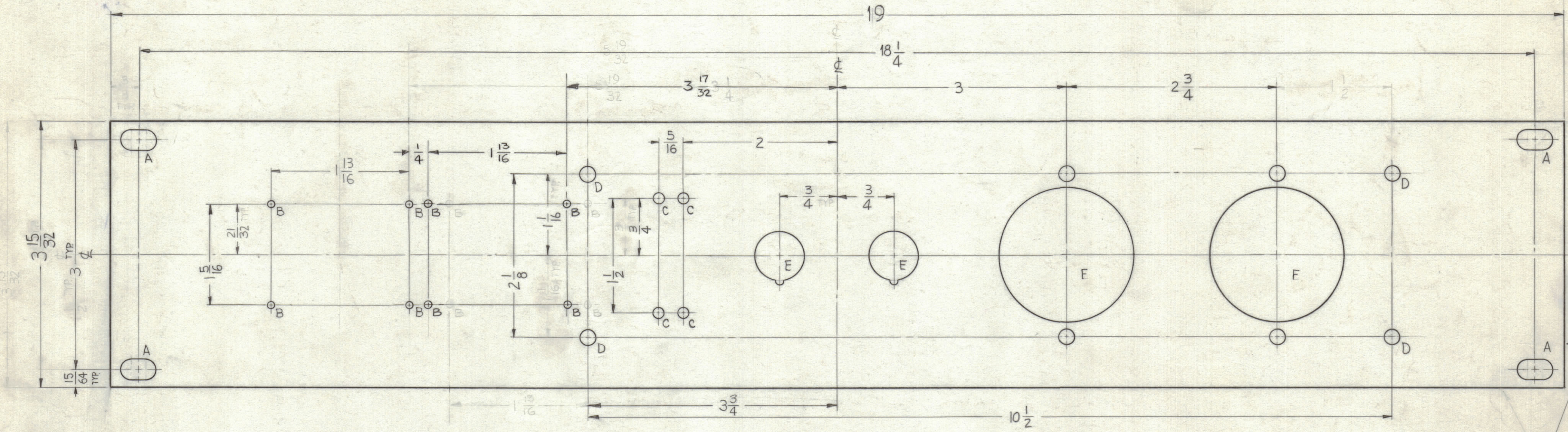


REVISIONS						
ZONE	SYM	DESCRIPTION	DATE	E.M.N. NO.	DRAFT	CHKD. APPD.
E.F.5	A	4"Ø HOLES ADDED	8.14.61	12093	AKB	AKB
E.F.5	B	4"Ø HOLES RELOCATED	9.22.61	12435	AKB	AKB



FINISH - S404 IRIDITE

- S 404 - IRIDITE
- S 114 - ZINC CHROMATE PRIME
- S 115 - TMC SMOOTH GRAY ENAMEL OR PRIME & PAINT PER. CUST. SPEC.

FRONT & EDGES ONLY

MACHINING

- LATERAL BOW OF PANEL MUST BE KEPT TO .031 TOLERANCE.
- MILL ALL EDGES.
- HOLES MUST BE DRILLED
- PANEL MUST BE FREE OF ALL MACHING MARKS, GOUGES & SCRATCHES. IF NECESSARY SAND FRONT OF PANEL WITH #120 GRIT SAND PAPER.

HOLE	DESCRIPTION	REQ.
A	SEE DETAIL	4
B	#47 DR. (.078)	8
C	1/8 (.125) DIA.	4
D	3/16 (.187) DIA.	4
E	SEE DETAIL	2
F	SEE DETAIL	2

METAL STAMP TMC PART NO. 1/8" HIGH GOTHIC. (ON REAR OF PANEL), WITH LATEST REVISION LETTER.

MS-3001 B

REF. TMC DWG. LD-1136

REQ'D.	ITEM	PART NUMBER	DESCRIPTION	SYMBOL
RON KOHN LIST OF MATERIAL				
MATERIAL		3/16 ALUMINUM 2024-T3	THE TECHNICAL MATERIEL CORP. MAMARONECK, NEW YORK	
FINISH		SEE NOTE	TITLE PANEL, UTILITY OUTLET	
UNLESS OTHERWISE SPECIFIED DIMENSIONS ARE IN INCHES AND INCLUDE CHEMICALLY APPLIED OR PLATED FINISHES				
DECIMALS	.XX ± .01	FRACTIONS	± 1/64	ANGLES ± 0° 30'
TOLERANCES				
THE CONTENTS OF THIS DRAWING ARE THE EXCLUSIVE PROPERTY OF THE TECHNICAL MATERIEL CORP. ITS UNAUTHORIZED USE OR REPRODUCTION IN WHOLE OR IN PART IS STRICTLY FORBIDDEN.		DRAWN <i>Gianfilippo</i> DATE 7-23-62		
		CHECKED <i>AKB</i> DATE 7/31/62		
		ELECT. DES. <i>RKOHN</i> DATE 10 AUG 62		
		MECH. DES. <i>RKOHN</i> DATE 10 AUG 62		
MS-3001				B
SHEET				REV. LTR.

NOTES