

METAL STAMP TMC PART NO.
1/8 HIGH BLACK GOTHIC ON
REAR OF PANEL, W/LATEST
REVISION LETTER.

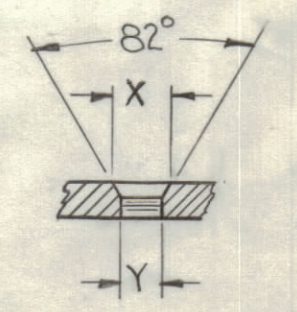
FRONT OF PANEL SHOWN

FINISHING NOTES:
S404 IRIDITE
S114 ZINC CHROMATE PRIMER
S115 TMC SMOOTH GREY ENAMEL
OR PRIME & PAINT TO CUST. SPEC } FRONT & EDGES ONLY

MACHINING NOTES:
1- LATERAL BOW OF PANEL MUST BE KEPT TO .031 TOL.
2- MILL ALL EDGES.
3- HOLES MUST BE FREE OF ALL MACHINING MARKS, GOUGES & SCRATCHES. IF NECESSARY, SAND FRONT OF PANEL WITH NO.120 GRIT SANDPAPER.

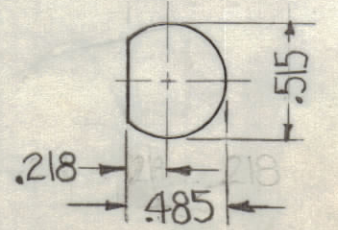
HOLE	DESCRIPTION	REQ
A	SEE DETAIL C'SINK	6
B	SEE DETAIL C'SINK	6
C	29/64 x 1/4 SLOT	4
D	.070 DIA.	3
E	SEE DETAIL E	16

C'SINK DETAIL



HOLE	TYPE	X	Y	Y
A	3-48	2.24	2.24	DRILL & TAP 3-48
B	6-32	2.64	2.64	.144

E-DETAIL



SYM	ZONE	DESCRIPTION	DATE	CH. NO.	DRAFTS	CHECKER	ENG. APP.
A		DIM. & HOLE CHART CLARIFIED, ADD W/LAT. REV. TO TMC NO.	10.4.66	16968	WHD	QC/S	MM

UNLESS OTHERWISE SPECIFIED:
DIMENSIONS ARE IN INCHES
TOLERANCES ON FRACTIONS ± 1/64 DECIMALS ± .005 ANGLES ± 1/2°

SCALE DO NOT SCALE

MAXIMUM ALLOWABLE TOLERANCES HAVE BEEN DETERMINED AND ANY DEVIATIONS WILL BE CAUSE FOR REJECTION. REMOVE ALL BURRS & SHARP EDGES

REQ. PER UNIT	MODEL	SECTION	ASS'Y. NO.	DATE
1	JPP-4A4X16			4-30-62

REQ. ITEM	PART NO.	DESCRIPTION	SYMBOL
	3/16	THE TECHNICAL MATERIEL CORP. MAMARONECK, NEW YORK	
	ALUMINUM	PANEL, FRONT MACHINING	
	2024-T3		
	SEE FINISHING NOTES		

FINISH & SPEC. NO. ELEC. DES. APP. MECH. DES. APP. SHEET OF MS2958 A