

THE CONTENTS OF THIS DRAWING ARE THE EXCLUSIVE PROPERTY OF THE TECHNICAL MATERIEL CORP. ITS UNAUTHORIZED USE OR REPRODUCTION IN WHOLE OR IN PART IS STRICTLY FORBIDDEN.

REQ. PER UNIT

4

USED ON

MODEL

HFS-1

ASS'Y. NO.

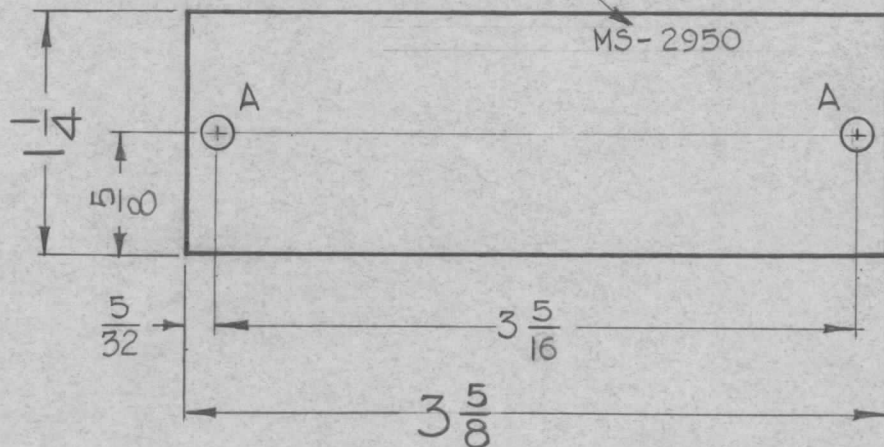
DATE

8-15-62

MS-2950

METAL STAMP TMC PART No.
1/8 HIGH GOTHIC AS SHOWN

LEGEND		
HOLE	DESCRIPTION	REQ.
A	5/32 DIA.	2



REF:
LD-1078 (3100)
LD-1082 (3200)
LD-1083 (3300)
LD-1084 (3400)

UNLESS OTHERWISE SPECIFIED DIMENSIONS ARE IN INCHES AND INCLUDE CHEMICALLY APPLIED OR PLATED FINISHES	
DECIMALS	FRACTIONS
.X ± .05	± 1/64
.XX ± .01	ANGLES
.XXX ± .005	± 0° 30'
TOLERANCES	

CUT HERE
GUARANTEED
2-66

REQ.	ITEM	PART NO.	STRUMMER	DESCRIPTION	SYMBOL
				.064 THK.	
				STOCK SIZE	
				ALUMINUM	
				MATERIAL	
				5052 H-32	
				TYPE & TEMPER	
				S404 YELLOW IRIDITE	
				HEAT TREAT. SPEC.	
				FINISH & SPEC. NO.	
				G.D.L.	
				DRAWN	
				CHECKED	
				FINAL APPROVAL	
				ELEC. DES. APP.	
				MECH. DES. APP.	
					MS-2950

UNLESS OTHERWISE SPECIFIED:
DIMENSIONS ARE IN INCHES
TOLERANCES ON
FRAC. ± 1/64 DEC. ± .005 ANGLES ± 1/2°

SCALE: DO NOT SCALE
MAXIMUM ALLOWABLE TOLERANCES HAVE
BEEN DETERMINED AND ANY DEVIATIONS
WILL BE CAUSE FOR REJECTION.
REMOVE ALL BURRS AND SHARP EDGES