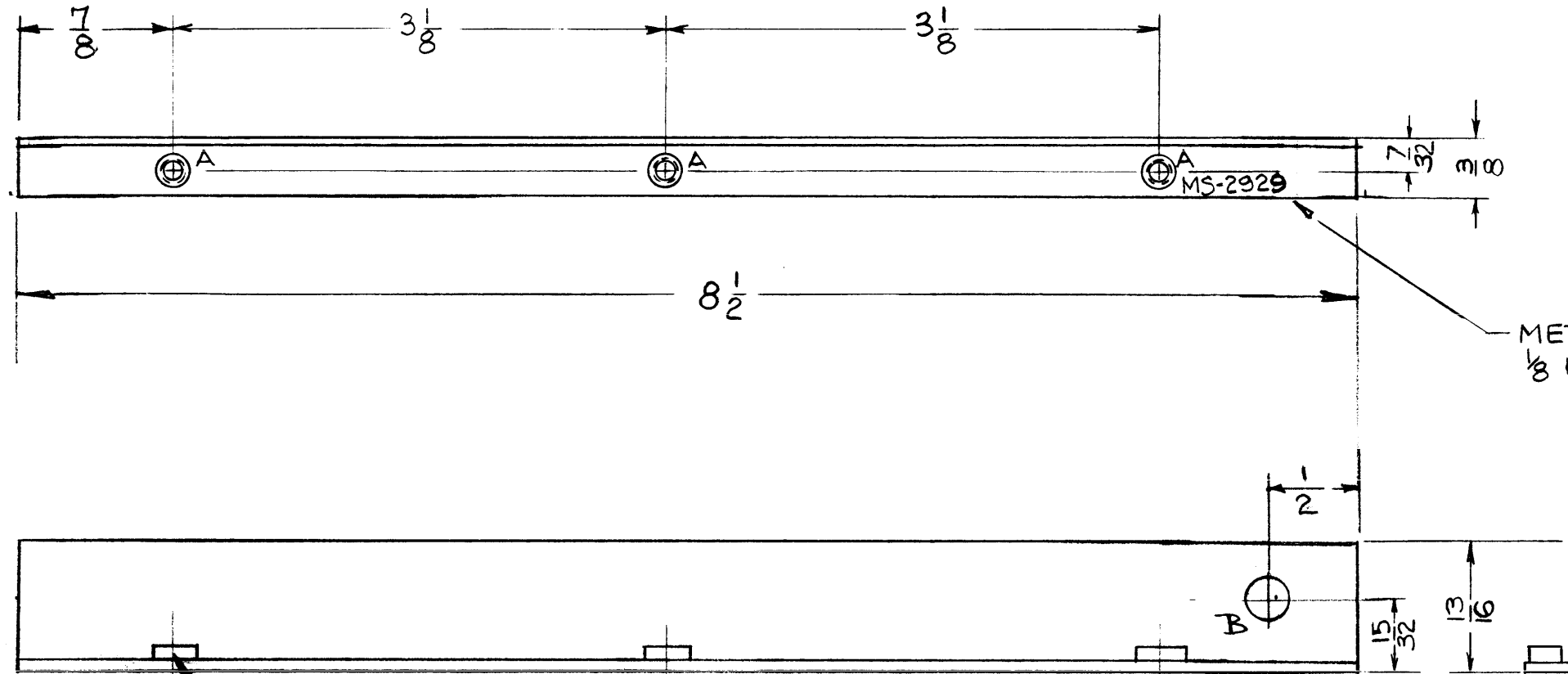


MS-2929

THE CONTENTS OF THIS DRAWING ARE THE EXCLUSIVE PROPERTY OF THE TECHNICAL MATERIEL CORP. ITS UNAUTHORIZED USE OR REPRODUCTION IN WHOLE OR IN PART IS STRICTLY FORBIDDEN.

LEGEND

HOLE	DESCRIPTION	QUAN.
A	.161-.164 DIA.	3
B	1/4 DIA.	1



METAL STAMP TMC PART NO. 1/8 HIGH GOTHIC AS SHOWN.

MOUNT ITEM 1 IN ALL "A" HOLES AFTER FINISHING

NOTICE TO REVISIONS & REVISED DRAWING

THE TECHNICAL MATERIEL CORPORATION claims proprietary right in its patents, methods, designs and drawings. This drawing is issued for the purpose of conveying information only and may not be used for the manufacture of any product without the express permission from THE TECHNICAL MATERIEL CORPORATION to the extent that it is not the mutual assistance and is subject to change at any time.

THE TECHNICAL MATERIEL CORPORATION
MAMARONECK, NEW YORK

USE MATERIAL THICKNESS FOR MAX. RADIUS ON ALL BENDS UNLESS OTHERWISE SPECIFIED

3	1	NT-129-440-4	NUT, ROUND, SWAGE TYPE	
REQ.	ITEM	PART NO.	WESCHLER	DESCRIPTION
.064			THE TECHNICAL MATERIEL CORP.	
STOCK SIZE			MAMARONECK, NEW YORK	
ALUMINUM			BRACKET, ANGLE	
MATERIAL			RF SHIELD #1 (MAIN CHASSIS)	
5052-H-32			V.R.R.	BP
TYPE & TEMPER		HEAT TREAT. SPEC.	DRAWN	CHECKED
YEL. IRIDITE				MS-2929
FINISH & SPEC. NO.		ELEC. DES. APP.	MECH. DES. APP.	

SYM	DESCRIPTION	DATE	CH. NO.	DRAFTS	CHECKER	ENG. APP.
UNLESS OTHERWISE SPECIFIED:						
DIMENSIONS ARE IN INCHES		SCALE: DO NOT SCALE				
TOLERANCES ON FRACTIONS ± 1/64		MAXIMUM ALLOWABLE TOLERANCES HAVE BEEN DETERMINED AND ANY DEVIATIONS WILL BE CAUSE FOR REJECTION.				
DECIMALS ± .005		REMOVE ALL BURRS AND SHARP EDGES				
ANGLES ± 1/2°						

REQ. PER UNIT	MODEL	SECTION	ASS'Y. NO.	DATE
1	AFC-2A			7-26-62
1	AFC-3			7-26-62