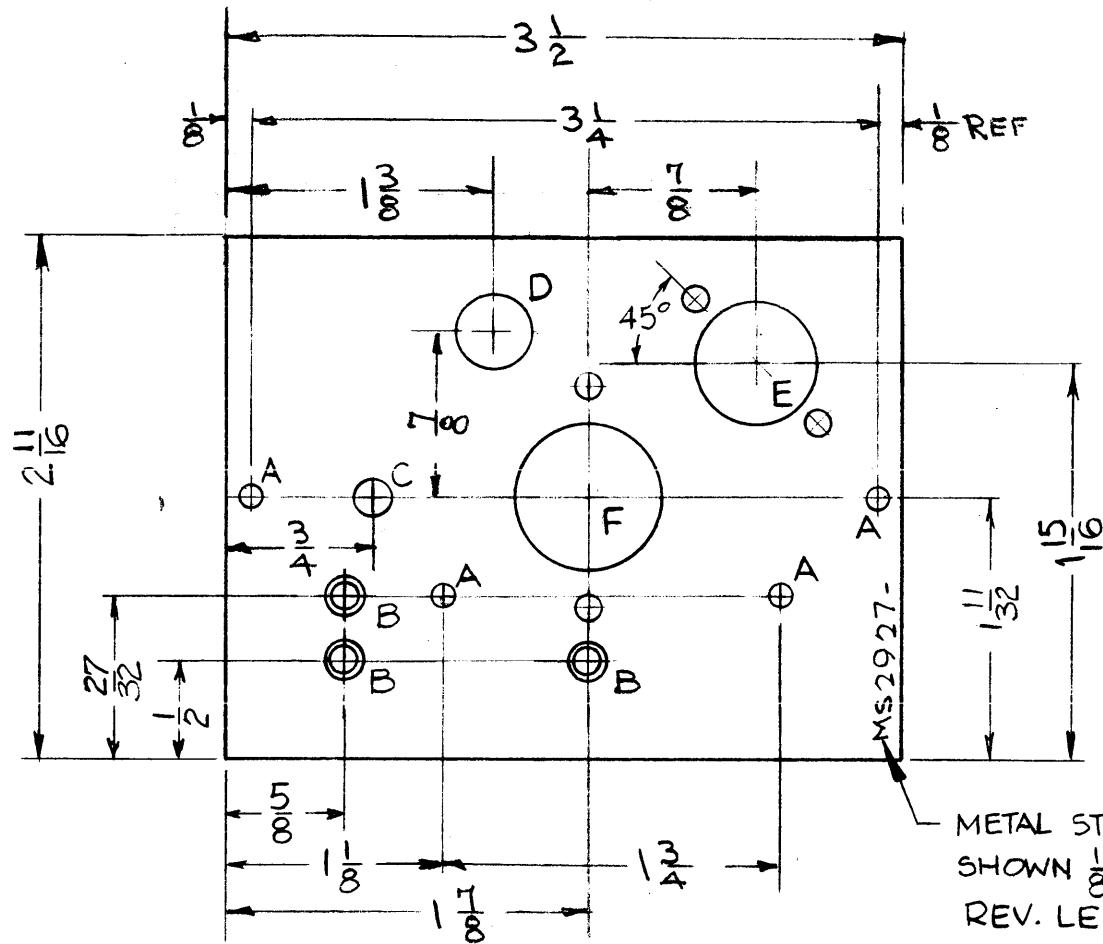


MS 2927 B

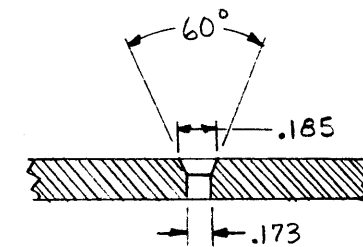
THE CONTENTS OF THIS DRAWING ARE THE EXCLUSIVE PROPERTY OF THE TECHNICAL MATERIEL CORP. ITS UNAUTHORIZED USE OR REPRODUCTION IN WHOLE OR IN PART IS STRICTLY FORBIDDEN.

LEGEND

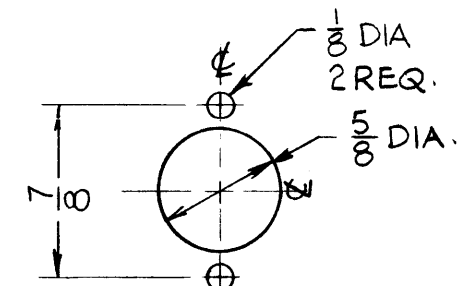
HOLE	DESCRIPTION	QUAN.
A	5/32 DIA.	4
B	SEE DETAIL	3
C	3/16 DIA.	1
D	3/8 DIA.	1



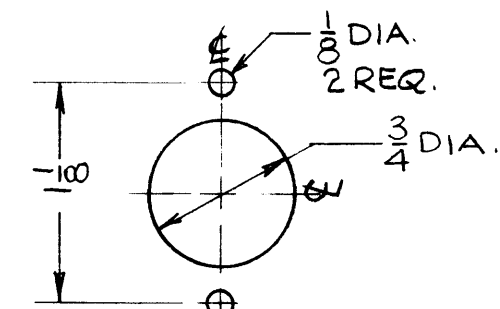
METAL STAMP TMC PART NO. AS SHOWN 1/8 HIGH GOTHIC, W/LATEST REV. LETTER.



"B" DETAIL



"E" DETAIL  
1 REQ



"F" DETAIL  
1 REQ.

NOTICE TO BUYER  
THIS DRAWING IS THE PROPERTY OF THE TECHNICAL MATERIEL CORP. IT IS TO BE USED FOR THE MANUFACTURE OF THE PARTS SPECIFIED THEREON. IT IS TO BE KEPT IN THE OFFICE OF THE BUYER AND NOT REPRODUCED OR COPIED IN ANY MANNER WITHOUT THE WRITTEN PERMISSION OF THE TECHNICAL MATERIEL CORP.

REF: LD-1095

SYM	DESCRIPTION	DATE	CH. NO.	DRAFTS	CHECKER	ENG. APP.
B	"AFC-5" ADDED USED ON "ADD "B" HOLE, PT. NO. NOTE REV.	11.28.66	17331	Wto	[Signature]	[Signature]
A	(2) "B" HOLES WERE .172 DIA.	11.14.62	7670	[Signature]	[Signature]	[Signature]

UNLESS OTHERWISE SPECIFIED:  
DIMENSIONS ARE IN INCHES  
TOLERANCES ON FRACTIONS ± 1/64 DECIMALS ± .005 ANGLES ± 1/2°

SCALE: DO NOT SCALE  
MAXIMUM ALLOWABLE TOLERANCES HAVE BEEN DETERMINED AND ANY DEVIATIONS WILL BE CAUSE FOR REJECTION. REMOVE ALL BURRS AND SHARP EDGES

REQ. PER UNIT	MODEL	SECTION	ASS'Y. NO.	DATE
1	AFC-5			7-12-66
1	AFC-2A			7-26-62
1	AFC-3			7-26-62

USED ON

REQ.	ITEM	PART NO.	WESCHLER DESCRIPTION	SYMBOL
		.064	THE TECHNICAL MATERIEL CORP. MAMARONECK, NEW YORK	
		ALUMINUM	CHASSIS, ELECTRICAL	
			CRYSTAL, OSC. # 1	
		5052-H-32	V.R.R. [Signature]	[Signature]
		S404 YEL IRIDITE	[Signature]	[Signature]

MS 2927 B