

THE CONTENTS OF THIS DRAWING ARE THE EXCLUSIVE PROPERTY OF THE TECHNICAL MATERIEL CORP. ITS UNAUTHORIZED USE OR REPRODUCTION IN WHOLE OR IN PART IS STRICTLY FORBIDDEN.

REQ. PER UNIT

USED ON

MODEL

ASS'Y. NO.

DATE

1

HNF-1

7-26-62

MS-2915

HOLE

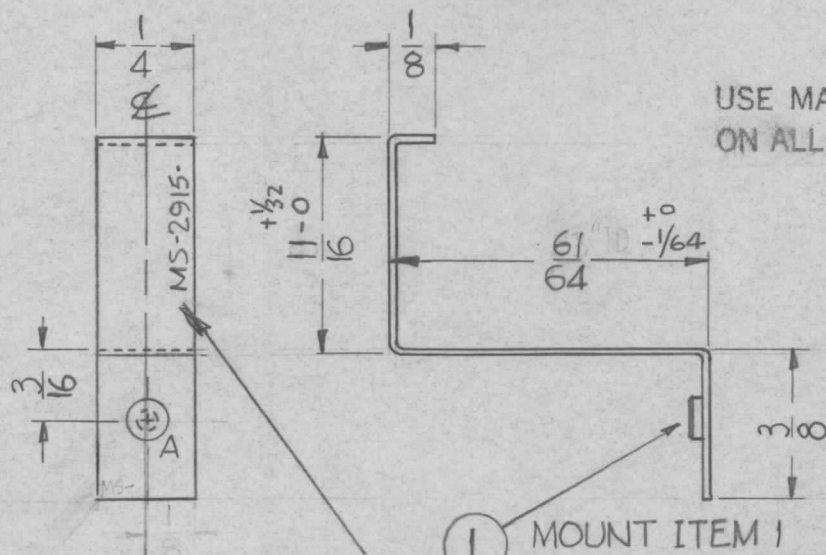
DESCRIPTION

REQ.

A

.161-.164 DIA

1



USE MATERIAL THICKNESS FOR MAX. RADIUS ON ALL BENDS UNLESS OTHERWISE SPECIFIED

MOUNT INSERTS AFTER FINISHING

METAL STAMP TMC PART NO 1/8 HIGH, GOTHIC AS SHOWN.

1 MOUNT ITEM 1 IN 'A' HOLE AS SHOWN AFTER FINISHING.

UNLESS OTHERWISE SPECIFIED DIMENSIONS ARE IN INCHES AND INCLUDE CHEMICALLY APPLIED OR PLATED FINISHES		
DECIMALS	TOLERANCES	FRACTIONS
.X ± .05		± 1/64
.XX ± .01		ANGLES
.XXX ± .005		± 0° 30'

CUT HERE GUARANTEED 2-66

1	1	NT-129-440-4	NUT, ROUND, SWAGE TYPE		A					
REQ.	ITEM	PART NO.	GELLMAN DESCRIPTION		SYMBOL					
		.064	THE TECHNICAL MATERIEL CORP.							
		ALUMINUM	MAMARONECK, NEW YORK							
			RETAINER, CAPACITOR							
SYM	DESCRIPTION	DATE	CH. NO.	DRAFTS	CHECKER	ENG. APP.				
UNLESS OTHERWISE SPECIFIED: DIMENSIONS ARE IN INCHES TOLERANCES ON		SCALE: $\odot \times 2$				5052-H32				
FRAC. ± 1/64 DEC. ± .005 ANGLES ± 1/2°		MAXIMUM ALLOWABLE TOLERANCES HAVE BEEN DETERMINED AND ANY DEVIATIONS WILL BE CAUSE FOR REJECTION. REMOVE ALL BURRS AND SHARP EDGES				TYPE & TEMPER	HEATTREAT. SPEC.	DRAWN	CHECKED	FINAL APPROVAL
						S-404 YEL IRIDITE				MS-2915
						FINISH & SPEC. NO.	ELEC. DES. APP.	MECH. DES. APP.		