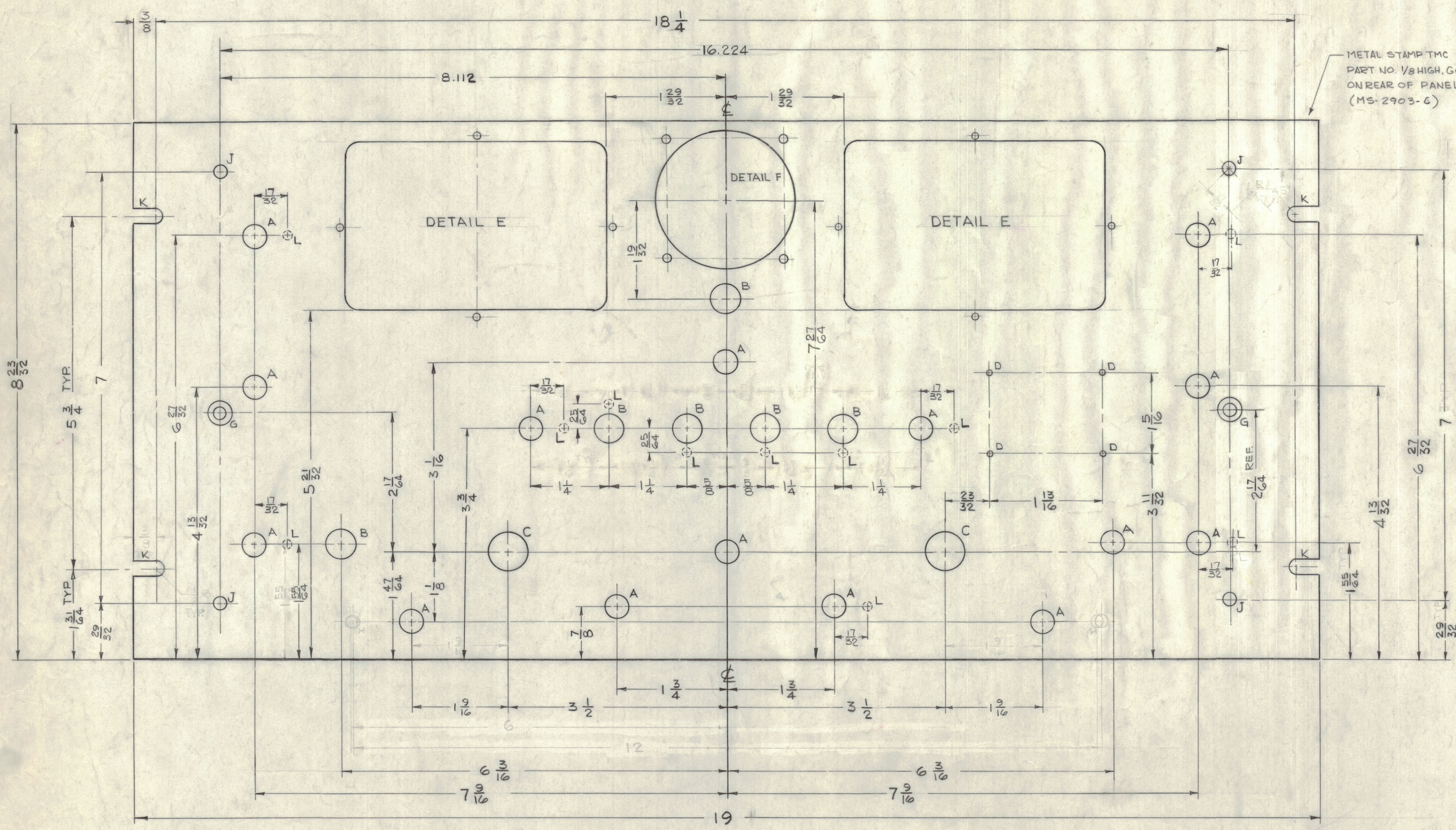
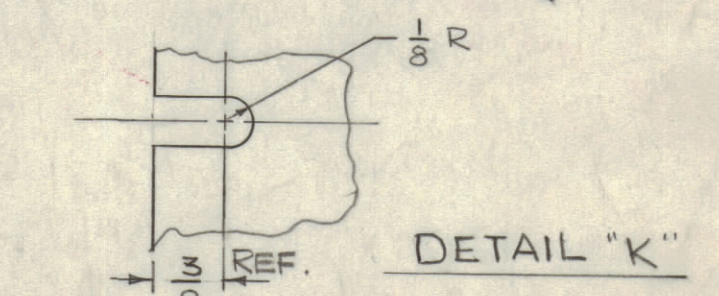
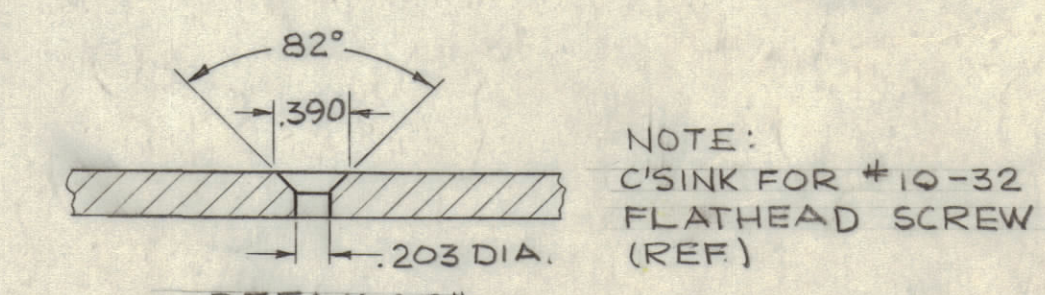
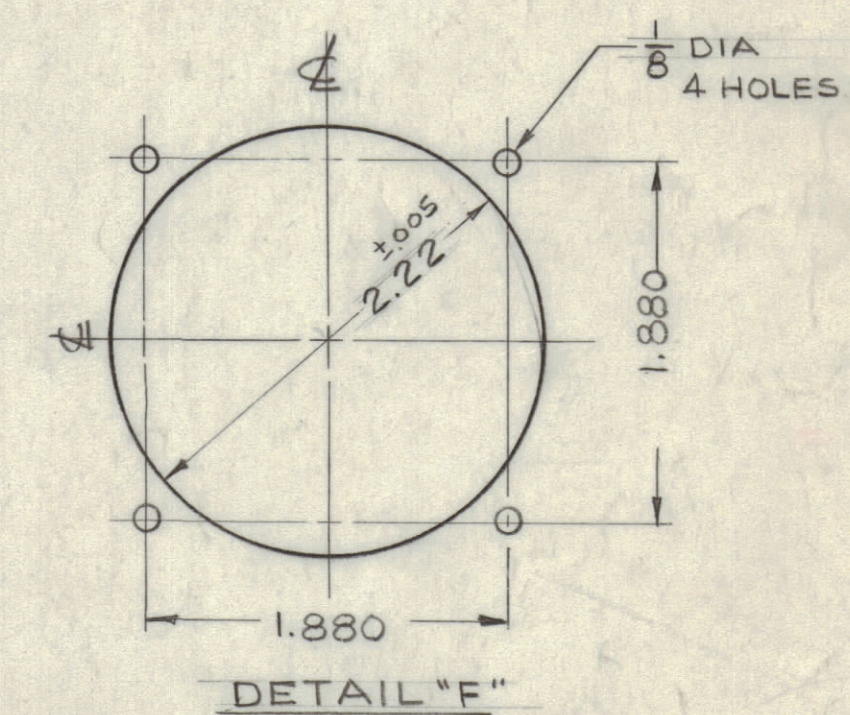
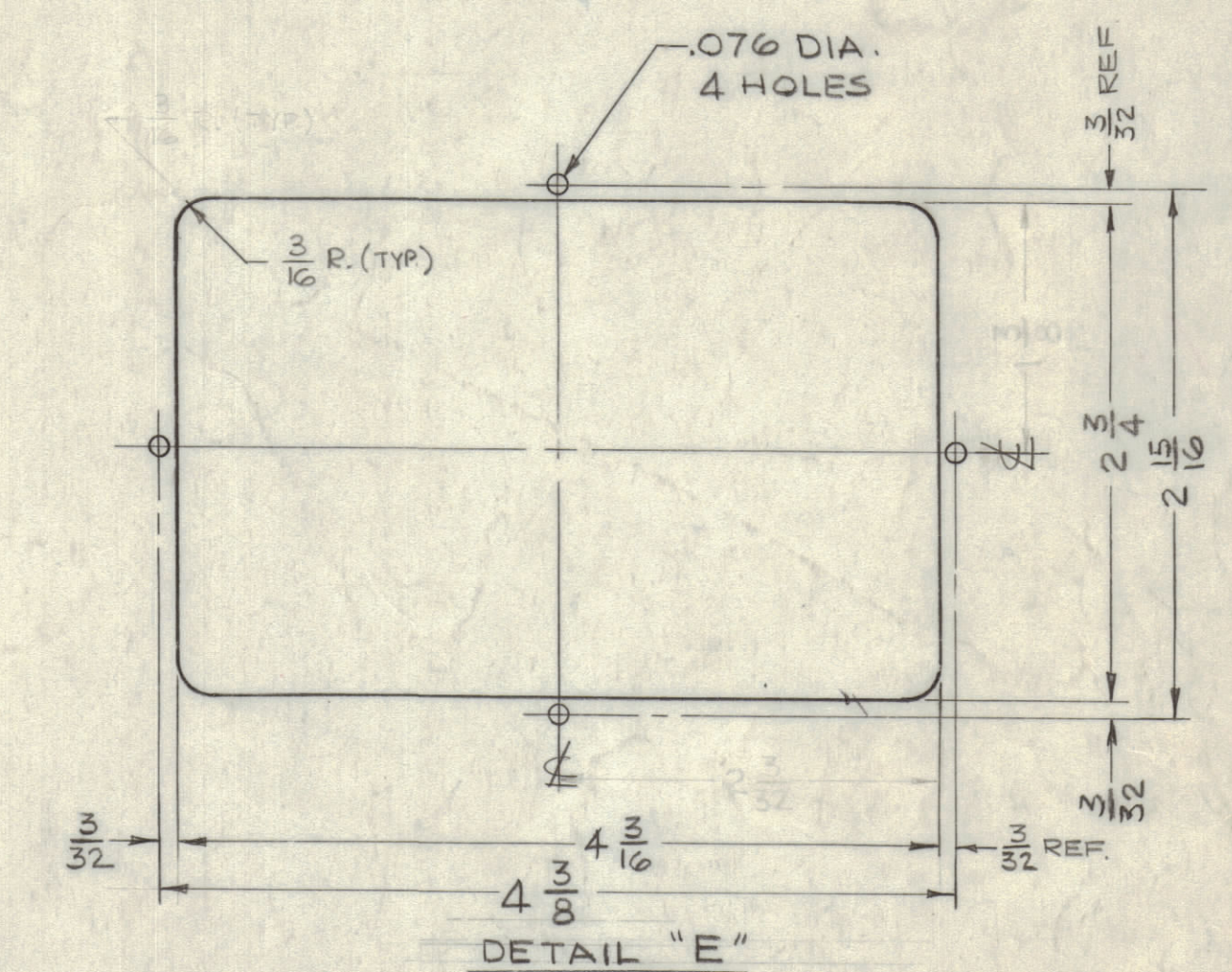


ZONE		SYM	DESCRIPTION	DATE	E.M.N. NO.	DRAFT	CHKD	APPD
E3	A		ON "E" DETAIL, 3/16 R. (TYP) ADDED	1-20-63	8336			
	B		10 "L" HOLES ADDED	2-25-63	9371			
A10	C		"L" HOLES, QTY WAS 10	3-17-63	9952			
C5, E5	D		(2) "L" HOLES RELOCATED	4-14-63	10142			
H	E		DELETED "H" HOLES	7-19-63	10526	A.M.		

B	3/16 DIA	6
C	5/8 DIA	2
D	#50(070)DR.	4
E	SEE DETAIL "E"	2
F	SEE DETAIL "F"	1
G	SEE DETAIL "G"	2
H	DELETED	2
J	1 3/64 DIA	4
K	SEE DETAIL "K"	4



METAL STAMP TMC
PART NO. 1/8 HIGH, GOTHIC
ON REAR OF PANEL
(MS-2903-C)



LEGEND

HOLE	DESCRIPTION	REQ'D
A	3/8 DIA	15
B	31/64 DIA.	6
C	5/8 DIA.	2
D	#50(070)DR.	4
E	SEE DETAIL "E"	2
F	SEE DETAIL "F"	1
G	SEE DETAIL "G"	2
H	DELETED	2
J	1 3/64 DIA	4
K	SEE DETAIL "K"	4
L	9/64 DIA X 1/8 DEEP FROM REAR OF PANEL	11

MACHINING:

- LATERAL BOW OF PANEL MUST BE KEPT TO .001 TOLERANCE.
- MILL ALL EDGES
- HOLES MUST BE DRILLED.
- PANEL MUST BE FREE OF ALL MACHINING MARKS, GOUGES & SCRATCHES, IF NECESSARY SAND FRONT OF PANEL WITH NO.120 GRIT SANDPAPER.

FINISH:

- S404 YELLOW IRIDITE
- S114 ZINC CHROMATE PRIMER & S115 TMC SMOOTH GREY ENAMEL } ON FRONT & EDGES ONLY

UNLESS OTHERWISE SPECIFIED DIMENSIONS ARE IN INCHES AND INCLUDE CHEMICALLY APPLIED OR PLATED FINISHES

DECIMALS	FRACTIONS	TOLERANCES	ANGLES
.XX ± .01	1/64	± .004	± 0° 30'
.XXX ± .005			

THE CONTENTS OF THIS DRAWING ARE THE EXCLUSIVE PROPERTY OF THE TECHNICAL MATERIEL CORP. ITS UNAUTHORIZED USE OR REPRODUCTION IN WHOLE OR IN PART IS STRICTLY FORBIDDEN.

REQ'D.	ITEM	PART NUMBER	DESCRIPTION	SYMBOL
			STRUMER	
			LIST OF MATERIAL	
			MATERIAL 3/16 ALUMINUM 2024-T4	
			THE TECHNICAL MATERIEL CORP. MAMARONECK, N.Y.	
			FINISH SEE NOTE	
			TITLE PANEL, FRONT MACHINING	
			DRAWN TEAMIRZ	DATE 1/17/63
			CHECKED [Signature]	DATE 1-19-63
			ELCOT. DES. [Signature]	DATE 1-23-63
			MECH. DES. [Signature]	DATE 1-23-63
			FINAL APPROVAL [Signature]	DATE
				MS-2903 E
				SHEET
				REV. LTR.

NOTES

MS-2903 E