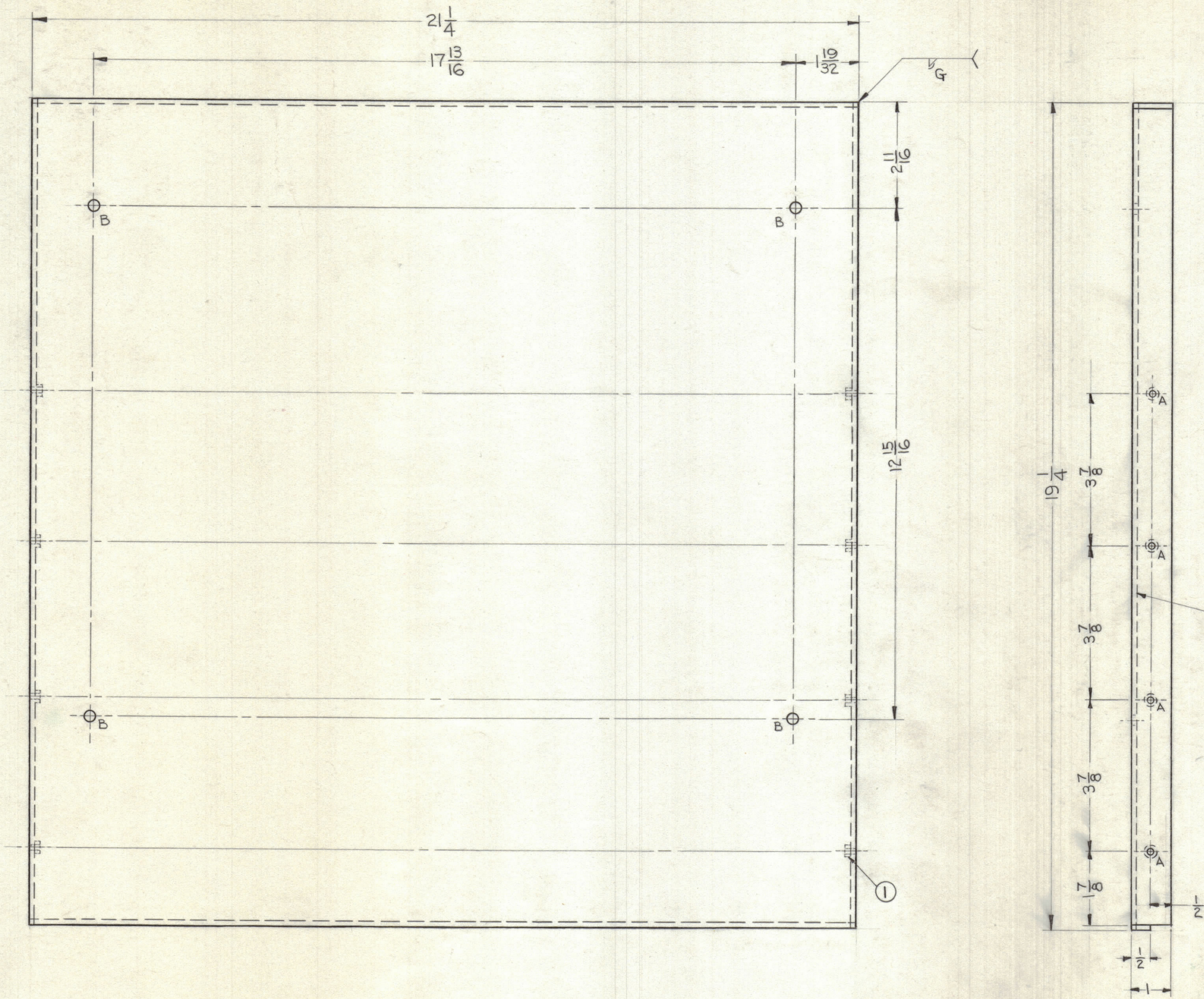


MS2902  $\emptyset$

A- .250 DIA. 8 REQ  
 B- 9/32 DIA. 4 REQ



METAL STAMP TMC PART NO.  
 MS2902 1/8 HIGH BLACK GOTHIC  
 THIS SIDE

SYM		ZONE	DESCRIPTION	DATE	CH. NO.	DRAFTS	CHECKER	ENG. APP.
$\emptyset$			ORIGINAL RELEASE FOR PRODUCTION	4/22/69		CJ.		
UNLESS OTHERWISE SPECIFIED:				SCALE 1/2" = 1"				
DIMENSIONS ARE IN INCHES				MAXIMUM ALLOWABLE TOLERANCES HAVE BEEN DETERMINED AND ANY DEVIATIONS WILL BE CAUSE FOR REJECTION. REMOVE ALL BURRS & SHARP EDGES				
TOLERANCES ON FRACTIONS $\pm 1/64$				DECIMALS $\pm .005$				
				ANGLES $\pm 1/2^\circ$				

REQ. PER UNIT	MODEL	SECTION	ASS'Y. NO.	DATE
	SYM2002			3-13-61
USED ON				

8	1	NT129-1032-5	NUT, RD. SWAGE TYPE
REQ. ITEM	PART NO.		DESCRIPTION
	11 GAGE		THE TECHNICAL MATERIEL CORP.
	STEEL		MAMARONECK, NEW YORK
	MATERIAL		TRAY, FOR RACK 26
			Ro. Larkin
			4/22/69
			FINAL APPROVAL
			MS2902 $\emptyset$
			SHEET OF
			ELEC. DES. APP. MECH. DES. APP.