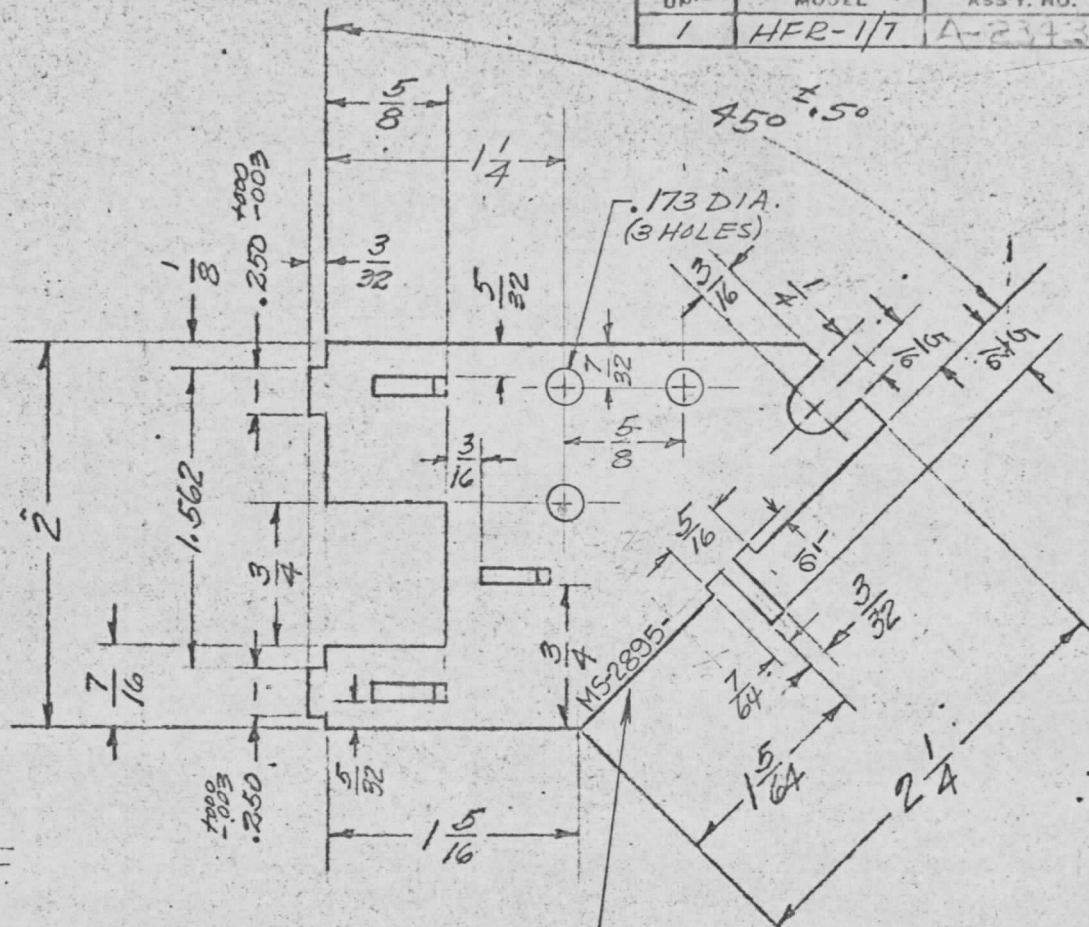


REQ. PER. UP.	USED ON			MS-2895
	MODEL	ASS'Y. NO.	DATE	
1	HFR-1/7	A-2343	4/14/61	



METAL STAMP TMC  
PART NO.  
1/8 HIGH GOTHIC AS SHOWN.

PUSHED OUT LUG  
DETAIL (3 LUGS)

ISSUE	ITEM	CHANGED FROM	DATE	CH. NO.	DRAFTS	CHECKER	ENG. APP.	REQ. ITEM	PART NO.	DESCRIPTION	SYMBOL	
								.040 THK		THE TECHNICAL MATERIEL, CORP.		
								STOCK SIZE		MAMARONECK, NEW YORK		
								BRASS		CHASSIS, ELEC. EQUIP. BAFFLE		
								MATERIAL		OSC. #2		
								1/2 HARD		J. LANGER	BP	
								TYPE & TEMPER	HEAT TREAT. SPEC.	DRAWN	CHECKED	
										J. LANGER		
								FINISH & SPEC. NO.		ELEC. DES. APP	MECH. DES. APP	
TOLERANCES			SCALE: 1:1					MAXIMUM ALLOWABLE TOLERANCES HAVE BEEN DETERMINED AND ANY DEVIATIONS WILL BE CAUSE FOR REJECTION. REMOVE ALL BURRS AND SHARP EDGES				
DEC. DIM. ± .002												
FRAC. DIM. ± .010												
ANGULAR DIM. ± .5°												
										MS-2895		