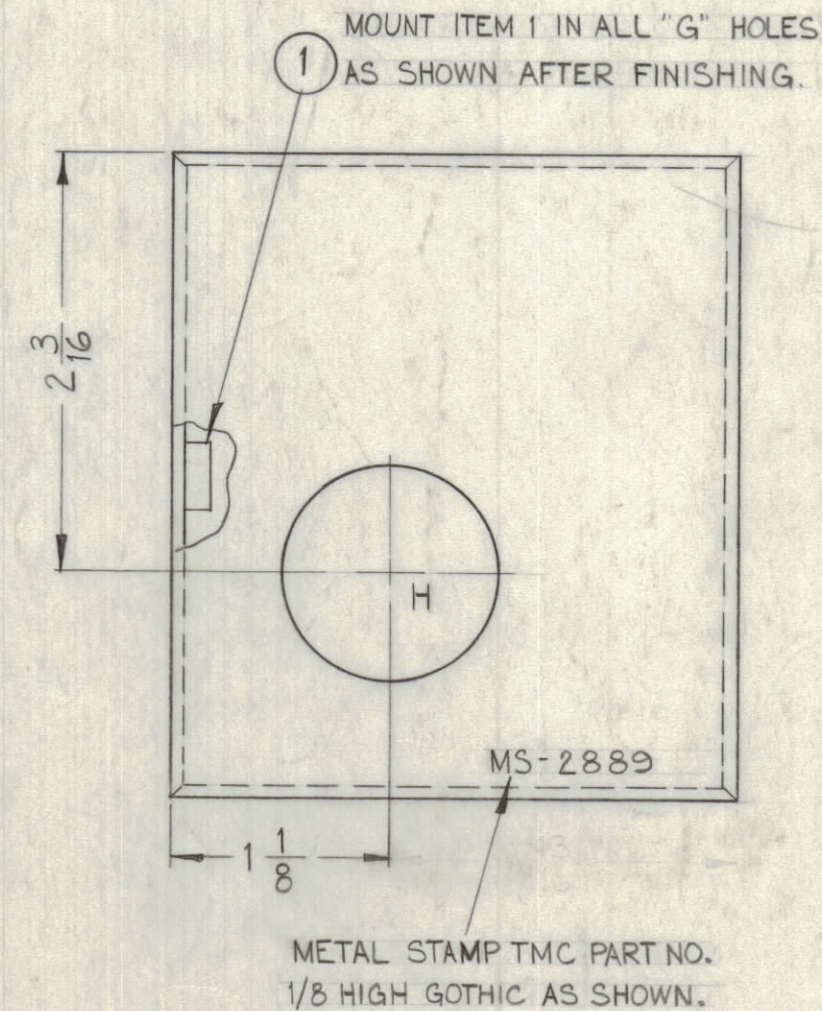
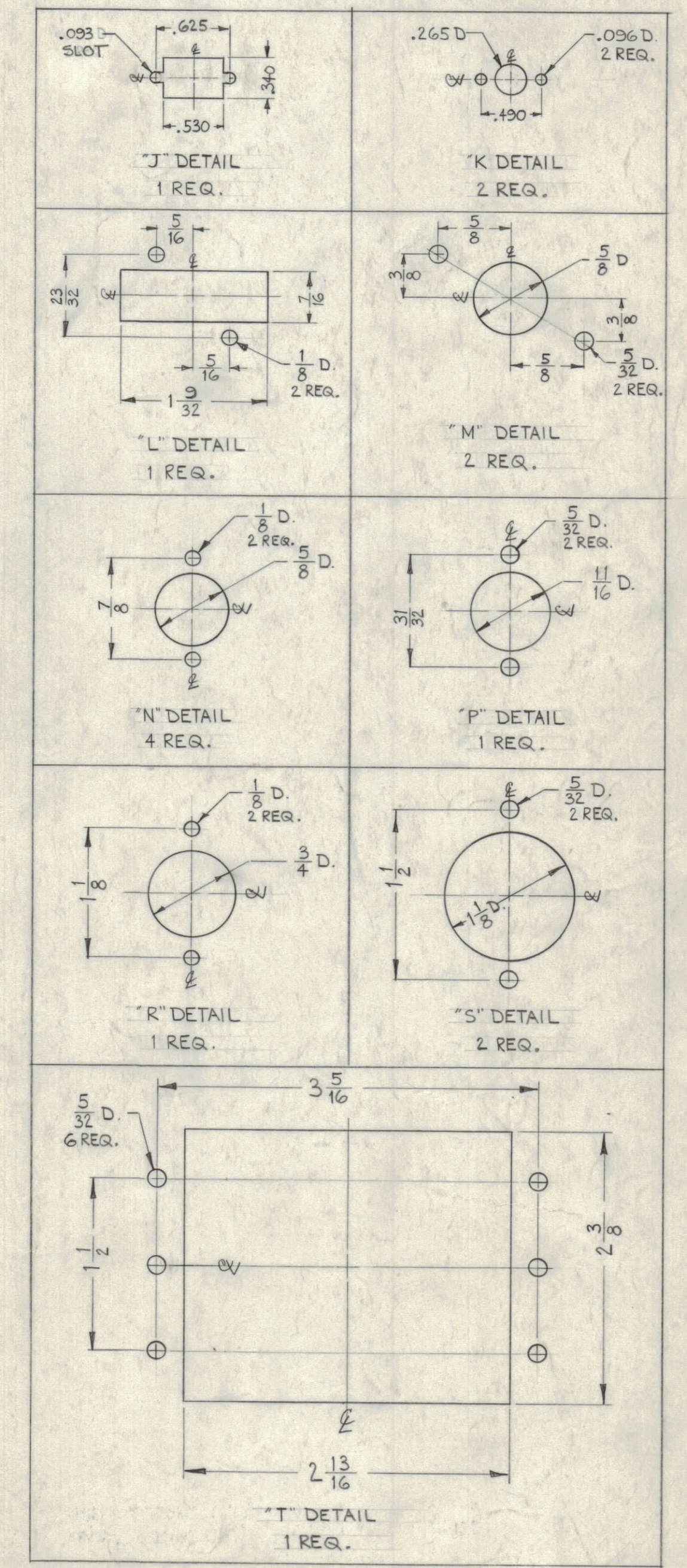
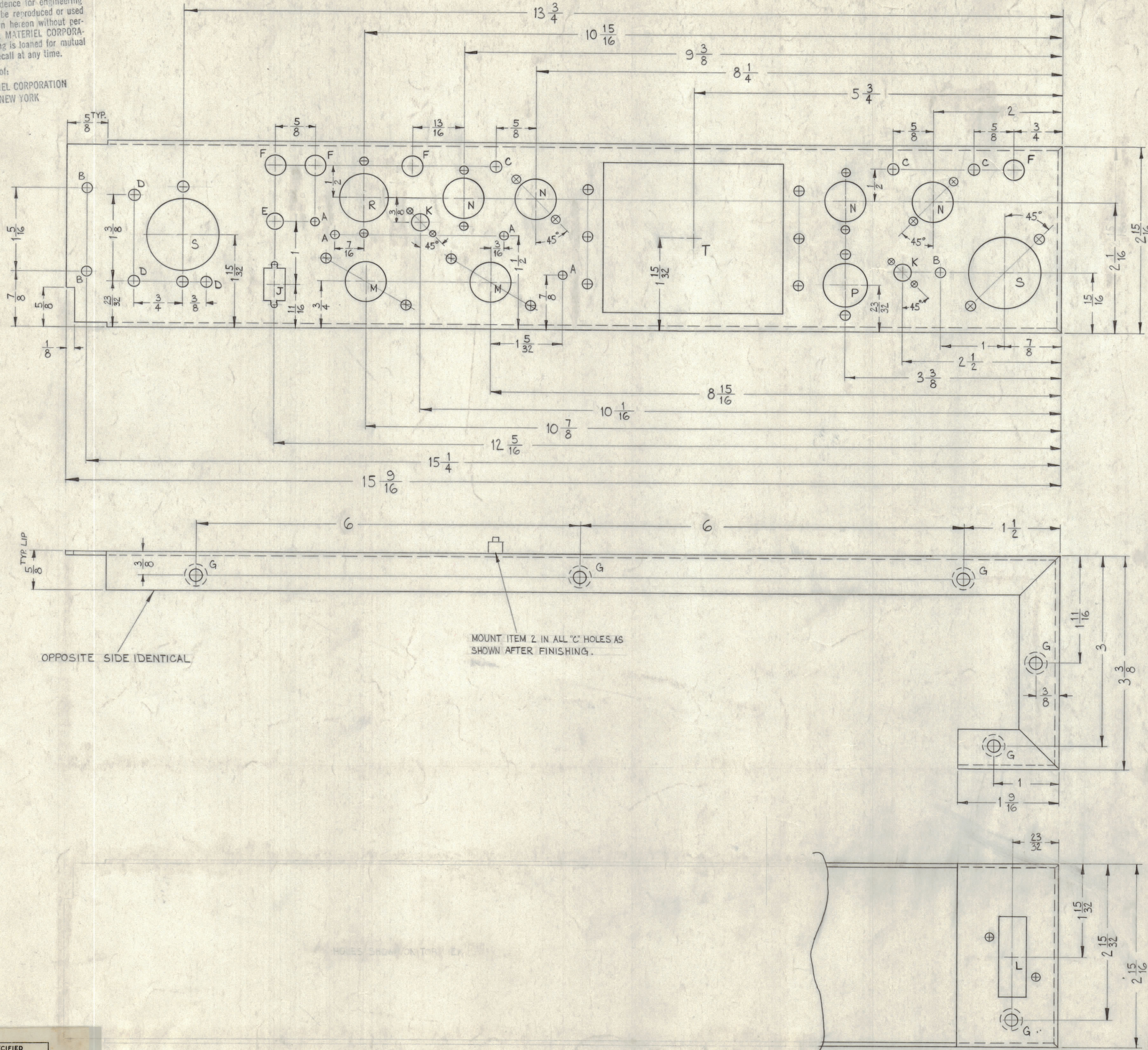


**NOTICE TO PERSONS RECEIVING THIS DRAWING**

THE TECHNICAL MATERIEL CORPORATION claims proprietary right in the material disclosed herein. This drawing is issued in confidence for engineering information only and may not be reproduced or used to manufacture anything shown herein without permission from THE TECHNICAL MATERIEL CORPORATION to the user. This drawing is loaned for mutual assistance and is subject to recall at any time.

Property of:  
THE TECHNICAL MATERIEL CORPORATION  
MAMARONECK, NEW YORK

| LEGEND |               |      |
|--------|---------------|------|
| HOLE   | DESCRIPTION   | REQ. |
| A      | 1/8 DIA.      | 4    |
| B      | 5/32 DIA.     | 3    |
| C      | .166 DIA.     | 3    |
| D      | 11/64 DIA.    | 3    |
| E      | 1/4 DIA.      | 1    |
| F      | 5/16 DIA.     | 4    |
| G      | .191-.194 DIA | 11   |
| H      | 1 1/8 DIA.    | 1    |



| UNLESS OTHERWISE SPECIFIED   |                  |
|--|------------------|
| DIMENSIONS ARE IN INCHES AND INCLUDE CHEMICALLY APPLIED OR PLATED FINISHES |                  |
| DECIMALS ± .005  | FRACTIONS ± 1/64 |
| ANGLES ± .01   | ANGLES ± .01     |
| XXX ± .005   | ANGLES ± .01     |

| SYM | ZONE | DESCRIPTION                   | DATE     | CH. NO. | DRAFTS | CHECKER | ENG. APP. |
|-----|------|-------------------------------|----------|---------|--------|---------|-----------|
| A   | F2   | .093 SLOTS WERE .093 D. HOLES | 10/21/63 | 10219   |        |         |           |

UNLESS OTHERWISE SPECIFIED:  
SCALE DO NOT SCALE

DIMENSIONS ARE IN INCHES

TOLERANCES ON  
FRACTIONS ± 1/64  
DECIMALS ± .005  
ANGLES ± 1/2°

MAXIMUM ALLOWABLE TOLERANCES HAVE BEEN DETERMINED AND ANY DEVIATIONS WILL BE CAUSE FOR REJECTION. REMOVE ALL BURRS & SHARP EDGES

USE MATERIAL THICKNESS FOR MAX. RADIUS ON ALL BENDS UNLESS OTHERWISE SPECIFIED

REF: LD: 1068 (B)

| REQ. ITEM | PART NO.     | DESCRIPTION            | SYMBOL |
|-----------|--------------|------------------------|--------|
| 3         | TE-169-1     | FEED-THRU, TEFLON      |        |
| 11        | NT-129-632-4 | NUT, ROUND, SWAGE TYPE | G      |

| REQ. PER UNIT | MODEL | SECTION | ASSY. NO. | DATE    | FINISH & SPEC. NO. |
|---------------|-------|---------|-----------|---------|--------------------|
| 1             | HFS-1 | SYNTH.  |           | 8-15-62 |                    |

| MATERIAL |          | MATERIAL |                   |
|----------|----------|----------|-------------------|
| .064     | ALUMINUM | 5052-H32 | 3404 YEL. IRIDITE |

| THE TECHNICAL MATERIEL CORP.<br>MAMARONECK, NEW YORK |         |                |  |
|--|---------|----------------|--|
| CHASSIS, ELECTRICAL EQUIPMENT<br>(3100 DECK) HFS-1   |         |                |  |
| DRAWN  | CHECKED | FINAL APPROVAL |  |
| MS-2889  |         | MS-2889        |  |

MS-2889 A