

THE CONTENTS OF THIS DRAWING ARE THE EXCLUSIVE PROPERTY OF THE TECHNICAL MATERIEL CORP. ITS UNAUTHORIZED USE OR REPRODUCTION IN WHOLE OR IN PART IS STRICTLY FORBIDDEN.

REQ. PER UNIT

2

MODEL

HFA-1

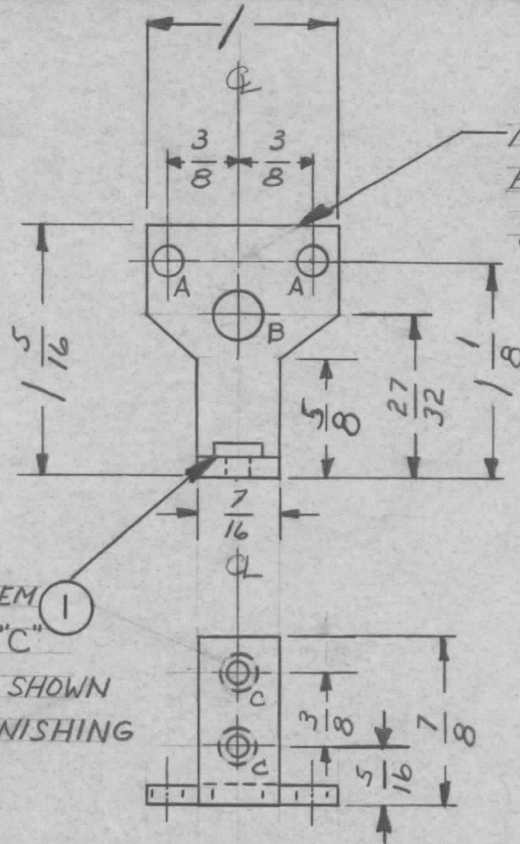
USED ON

ASS'Y. NO.

DATE

7-26-62

MS-2858



METAL STAMP TMC
PART NO. MS-2858
1/8" HIGH GOTHIC ON
REAR.

| HOLES. | REQ. |
|------------------|------|
| A-5/32 DIA. | 2 |
| B-1/4 DIA. | 1 |
| C-.191-.194 DIA. | 2 |

MOUNT ITEM
"1" IN ALL "C"
HOLES AS SHOWN
AFTER FINISHING

USE MATERIAL THICKNESS FOR MAX. RADIUS
ON ALL BENDS UNLESS OTHERWISE SPECIFIED

BLANK SIZE 1.2 1/16

UNLESS OTHERWISE SPECIFIED
DIMENSIONS ARE IN INCHES AND INCLUDE
CHEMICALLY APPLIED OR PLATED FINISHES

| DECIMALS | TOLERANCES | FRACTIONS |
|-------------|------------|-----------|
| .X ± .05 | | ± 1/64 |
| .XX ± .01 | | ANGLES |
| .XXX ± .005 | | ± 0° 30' |

CUT HERE
GUARANTEED
2-66

| | | | | |
|------|------|--------------------|------------------------------|-----------------|
| 2 | 1 | NT-129-632-4 | NUT, ROUND, SWAGE TYPE | C |
| REQ. | ITEM | PART NO. | DESCRIPTION | SYMBOL |
| | | .081 | THE TECHNICAL MATERIEL CORP. | |
| | | STOCK SIZE | MAMARONECK, NEW YORK | |
| | | ALUMINUM | BRACKET, MOUNTING, RELAY | |
| | | MATERIAL | | |
| | | 5052-H32 | G. SENCEN | BP |
| | | TYPE & TEMPER | DRAWN | CHECKED |
| | | HEAT TREAT. SPEC. | | FINAL APPROVAL |
| | | S704 YEL. IRIDITE | G.R. Fazio | MS-2858 |
| | | FINISH & SPEC. NO. | ELEC. DES. APP. | MECH. DES. APP. |

UNLESS OTHERWISE SPECIFIED:
DIMENSIONS ARE IN INCHES
TOLERANCES ON
FRAC. ± 1/64 DEC. ± .005 ANGLES ± 1/2°

SCALE:
MAXIMUM ALLOWABLE TOLERANCES HAVE
BEEN DETERMINED AND ANY DEVIATIONS
WILL BE CAUSE FOR REJECTION.
REMOVE ALL BURRS AND SHARP EDGES