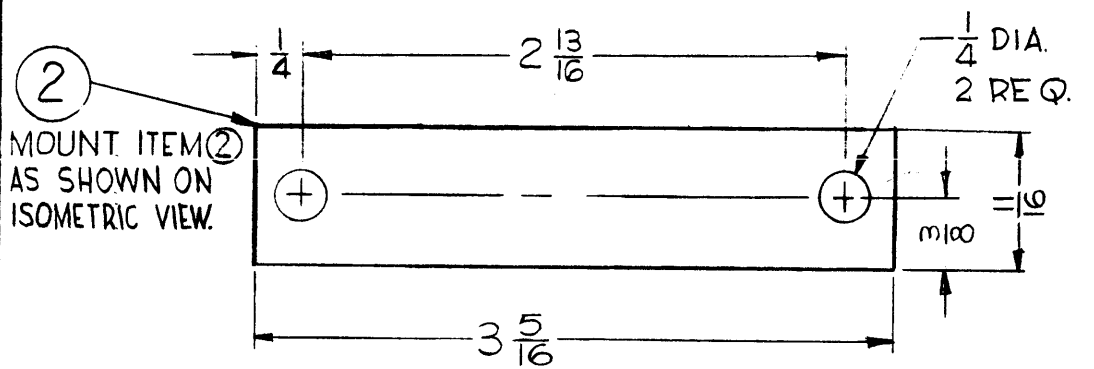
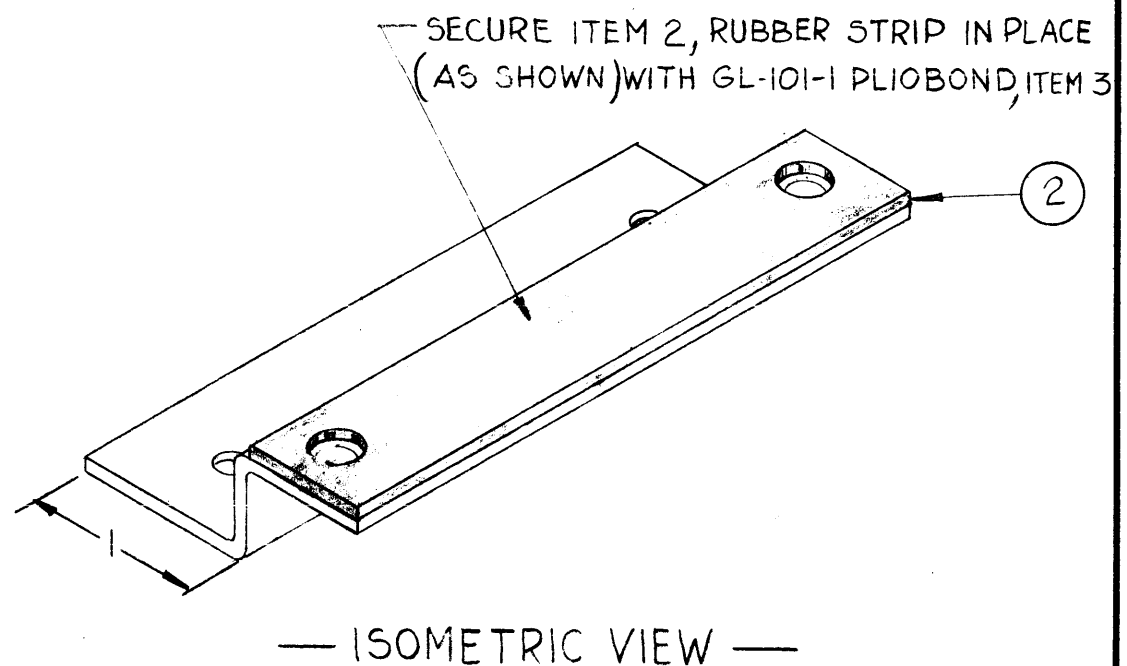
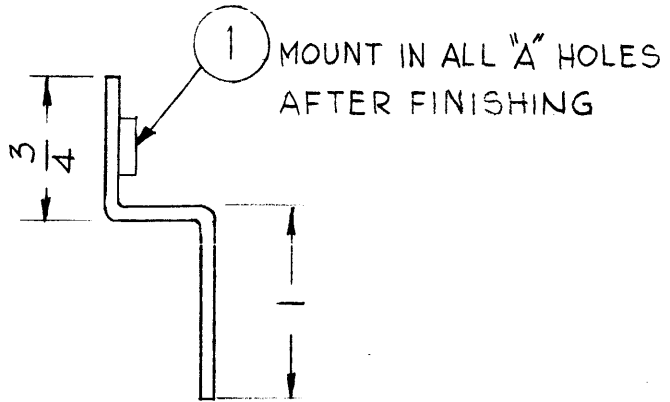
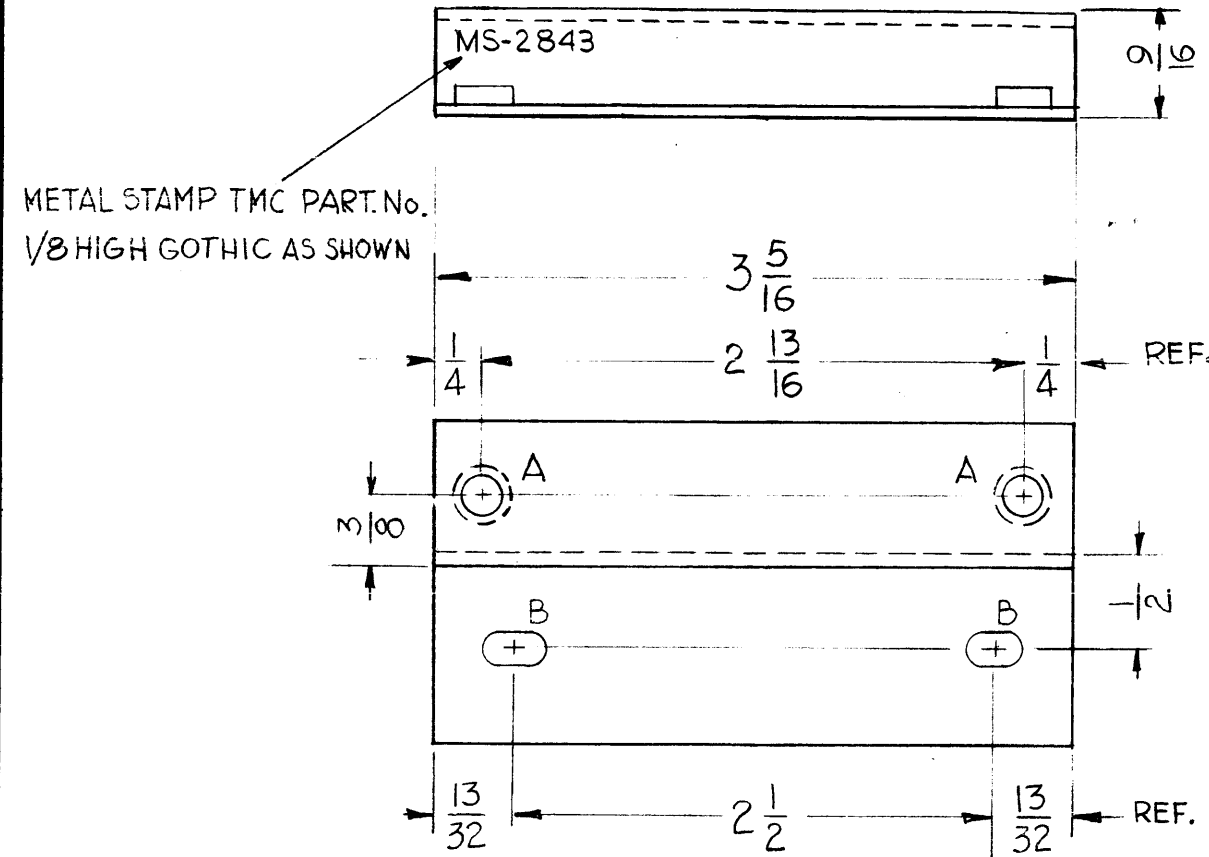


MS-2843

THE CONTENTS OF THIS DRAWING ARE THE EXCLUSIVE PROPERTY OF THE TECHNICAL MATERIEL CORP. ITS UNAUTHORIZED USE OR REPRODUCTION IN WHOLE OR IN PART IS STRICTLY FORBIDDEN.

LEGEND		
HOLE	DESCRIPTION	Req.
A	.191 - .194 DIA.	2
B	11/64 X 11/32	2



NOTICE TO PERSONS RECEIVING THIS DRAWING

THE TECHNICAL MATERIEL CORPORATION claims proprietary right in the material disclosed hereon. This drawing is issued in confidence for engineering information only and may not be reproduced or used to manufacture anything shown hereon without permission from THE TECHNICAL MATERIEL CORPORATION to the user. This drawing is loaned for mutual assistance and is subject to recall at any time.

Property of:  
THE TECHNICAL MATERIEL CORPORATION  
MAMARONECK, NEW YORK

USE MATERIAL THICKNESS FOR MAX. RADIUS ON ALL BENDS UNLESS OTHERWISE SPECIFIED

MOUNT INSERTS AFTER FINISHING

BLANK SIZE  
2 1/8 X 3 5/16

X	3	GL-101-1	PLIOBOND	
1	2	RY-123-2	SHEET, RUBBER, 1/16" THK	
2	1	NT-129-632-4	NUT, ROUND, SWAGE TYPE	A
REQ.	ITEM	PART NO.	DESCRIPTION	SYMBOL
.064 THK			THE TECHNICAL MATERIEL CORP.	
STOCK SIZE			MAMARONECK, NEW YORK	
ALUMINUM			BASE, BRACKET, MOUNTING	
MATERIAL			STANDARD FREQUENCY	
5032-H32			G.D.L.	H.S.
TYPE & TEMPER		HEAT TREAT. SPEC.	DRAWN	CHECKED
S404-YELLOW IRIDITE			J.D.	
FINISH & SPEC. NO.		ELEC. DES. APP.	MECH. DES. APP.	MS-2843

SYM	DESCRIPTION	DATE	CH. NO.	DRAFTS	CHECKER	ENG. APP.
UNLESS OTHERWISE SPECIFIED:		SCALE: DO NOT SCALE				
DIMENSIONS ARE IN INCHES		MAXIMUM ALLOWABLE TOLERANCES HAVE BEEN DETERMINED AND ANY DEVIATIONS WILL BE CAUSE FOR REJECTION.				
TOLERANCES ON FRACTIONS ± 1/64 DECIMALS ± .05 ANGLES ± 1/2°		REMOVE ALL BURRS AND SHARP EDGES				

REQ. PER UNIT	MODEL	SECTION	ASS'Y. NO.	DATE
1	CSS-1A			1-18-62
USED ON				