

THE CONTENTS OF THIS DRAWING ARE THE EXCLUSIVE PROPERTY OF THE TECHNICAL MATERIEL CORP. ITS UNAUTHORIZED USE OR REPRODUCTION IN WHOLE OR IN PART IS STRICTLY FORBIDDEN.

REQ. PER UNIT

USED ON

MODEL

ASS'Y. NO.

DATE

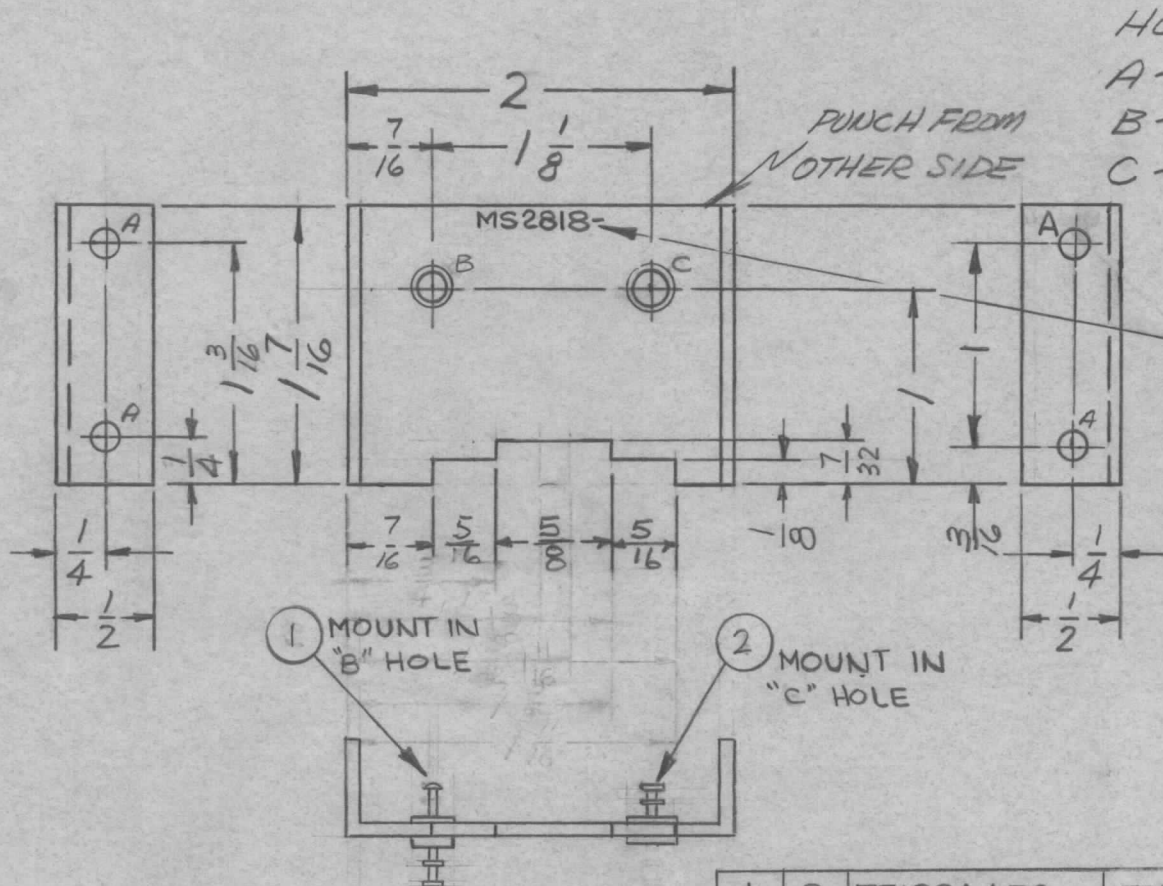
1

HFR-11/N

7-24-62

MS 2818

C



HOLES~

A ~ 9/64 DIA. 4 REQ'D.

B ~ .172 DIA, C'SINK 60° 1 REQ'D.

C ~ .136 DIA, C'SINK 60° 1 REQ'D

METAL STAMP
TMC PART NO.
1/8 HIGH GOTHIC, WITH
LATEST REVISION LETTER

1	2	TE192A4R9	TERMINAL, STUD, INSULATED	B
1	1	TE193B7S9	TERMINAL, STUD, INSULATED	C

REQ.	ITEM	PART NO.	DESCRIPTION	SYMBOL
		.051 THK	THE TECHNICAL MATERIEL CORP. MAMARONECK, NEW YORK	
		ALUMINUM	BRACKET, MOUNTING, RF SHIELD, #3	
		5052-H32	AB	JWB
		S404-YEL. IRIDITE	MECH. DES. APP.	BP
			ELEC. DES. APP.	MS 2818

SYM	DESCRIPTION	DATE	CH. NO.	DRAFTS	CHECKER	ENG. APP.
C	IT 1 & 2 REVERSED	11.28.66	17320	WJO	JWB	JWB
B	ONE "A" HOLE ADDED	11.5.64	12869	JWB	@	JWB
A	ITEMS (1) & (2) ADDED "B" HOLE WAS .172 D; "C" WAS .136 D	8-7-62	12046	JWB	NP.	JWB

UNLESS OTHERWISE SPECIFIED:
DIMENSIONS ARE IN INCHES
TOLERANCES ON
FRAC. ± 1/64 DEC. ± .005 ANGLES ± 1/2°

SCALE:
MAXIMUM ALLOWABLE TOLERANCES HAVE BEEN DETERMINED AND ANY DEVIATIONS WILL BE CAUSE FOR REJECTION.
REMOVE ALL BURRS AND SHARP EDGES

MS 2818 C