

THE CONTENTS OF THIS DRAWING ARE THE EXCLUSIVE PROPERTY OF THE TECHNICAL MATERIEL CORP. ITS UNAUTHORIZED USE OR REPRODUCTION IN WHOLE OR IN PART IS STRICTLY FORBIDDEN.

REQ. PER UNIT

2

USED ON

MODEL

SBS-1

ASS'Y. NO.

DATE

12-5-61

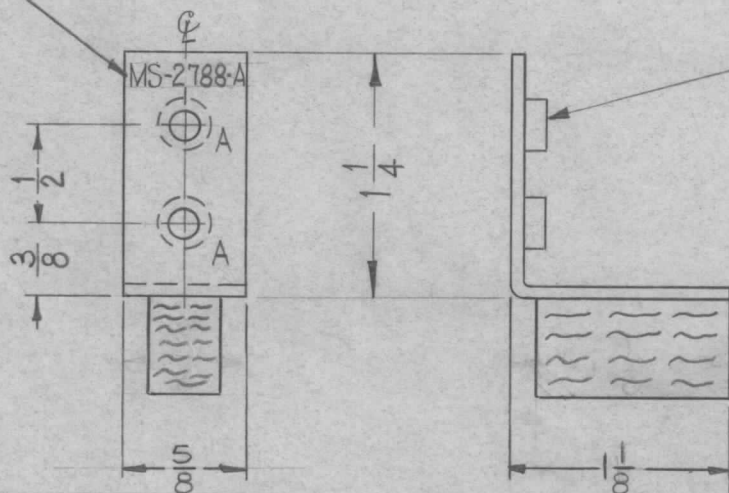
MS-2788



LEGEND

HOLE	DESCRIPTION	REQ.
A	.161-.164 DIA.	2

METAL STAMP TMC PART NO. $\frac{1}{8}$ " HIGH GOTHIC AS SHOWN.



① MOUNT ITEM ① IN ALL "A" HOLES AS SHOWN AFTER FINISHING.

② USE MATERIAL THICKNESS FOR MAX. RADIUS ON ALL BENDS UNLESS OTHERWISE SPECIFIED

MOUNT INSERTS AFTER FINISHING

UNLESS OTHERWISE SPECIFIED DIMENSIONS ARE IN INCHES AND INCLUDE CHEMICALLY APPLIED OR PLATED FINISHES

DECIMALS	FRACTIONS
.X ± .05	± 1/64
.XX ± .01	ANGLES ± 0° 30'
.XXX ± .005	

TOLERANCES

CUT HERE GUARANTEED 2-66

1"	2	RY-121-8-6-1.00	STRIP, SPONGE RUBBER	
2	1	NT-129-440-4	NUT, ROUND, SWAGE TYPE	A

REQ.	ITEM	PART NO.	DESCRIPTION	SYMBOL
		.064	THE TECHNICAL MATERIEL CORP.	
			MAMARONECK, NEW YORK	
A	ITEM ② ADDED	2-12-62 6343	ALUMINUM	BRACKET, SUPPORT, OVEN
SYM	DESCRIPTION	DATE	CH. NO.	DRAFTS
			CHECKER	ENG. APP.
UNLESS OTHERWISE SPECIFIED: DIMENSIONS ARE IN INCHES. TOLERANCES ON		SCALE: (DO NOT SCALE).		
FRAC. ± 1/64 DEC. ± .005 ANGLES ± 1/2°		MAXIMUM ALLOWABLE TOLERANCES HAVE BEEN DETERMINED AND ANY DEVIATIONS WILL BE CAUSE FOR REJECTION. REMOVE ALL BURRS AND SHARP EDGES		
		5052-H32	TYPE & TEMPER	HEAT TREAT. SPEC.
		S404 YEL. IRIDITE	FINISH & SPEC. NO.	
			ELEC. DES. APP.	MECH. DES. APP.
			MS-2788	A