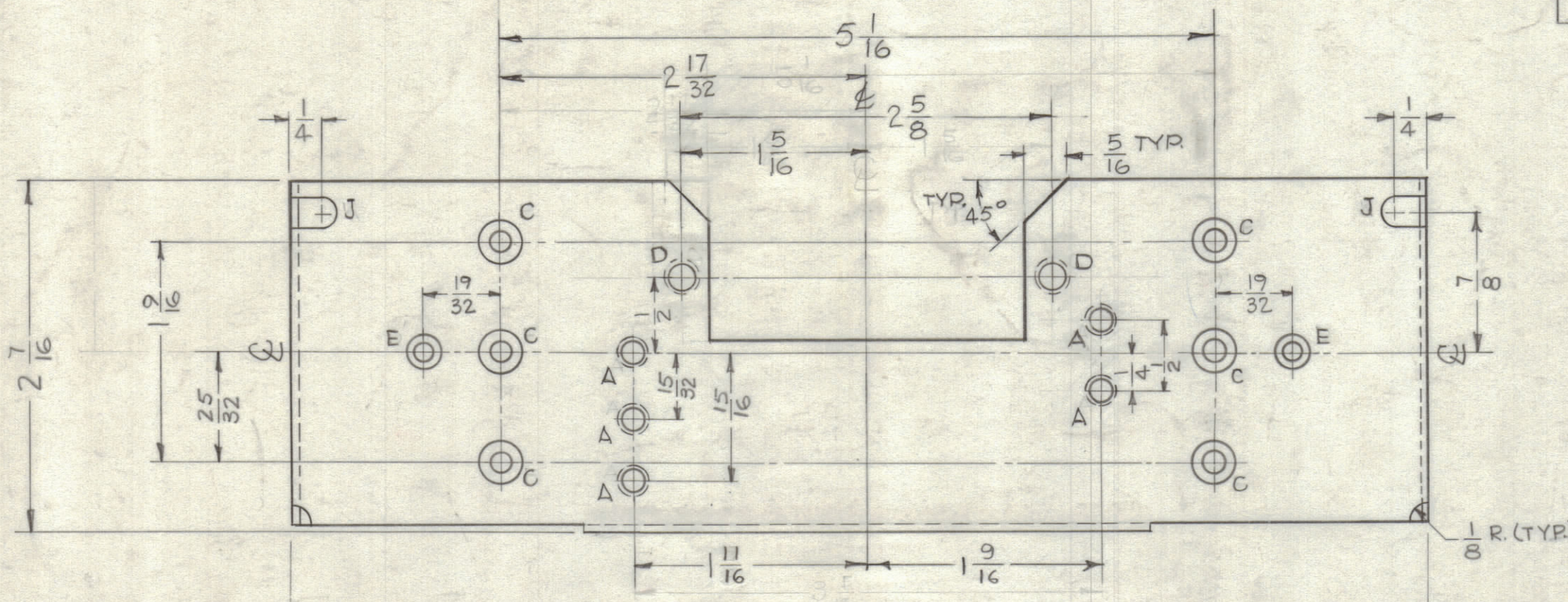


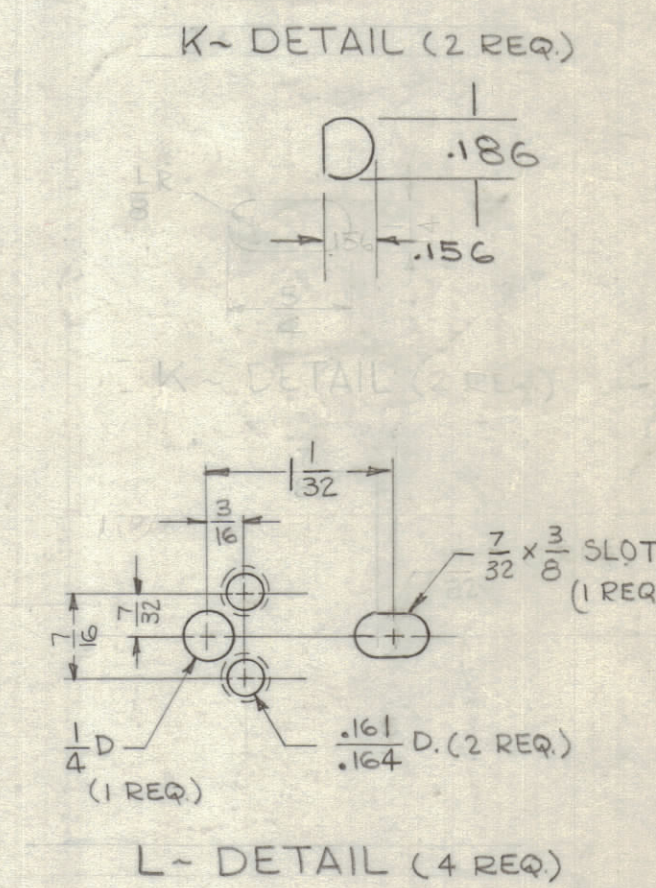
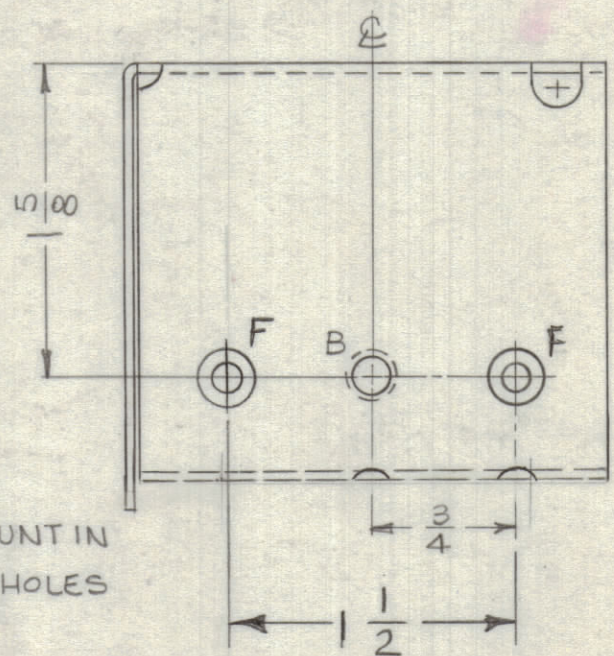
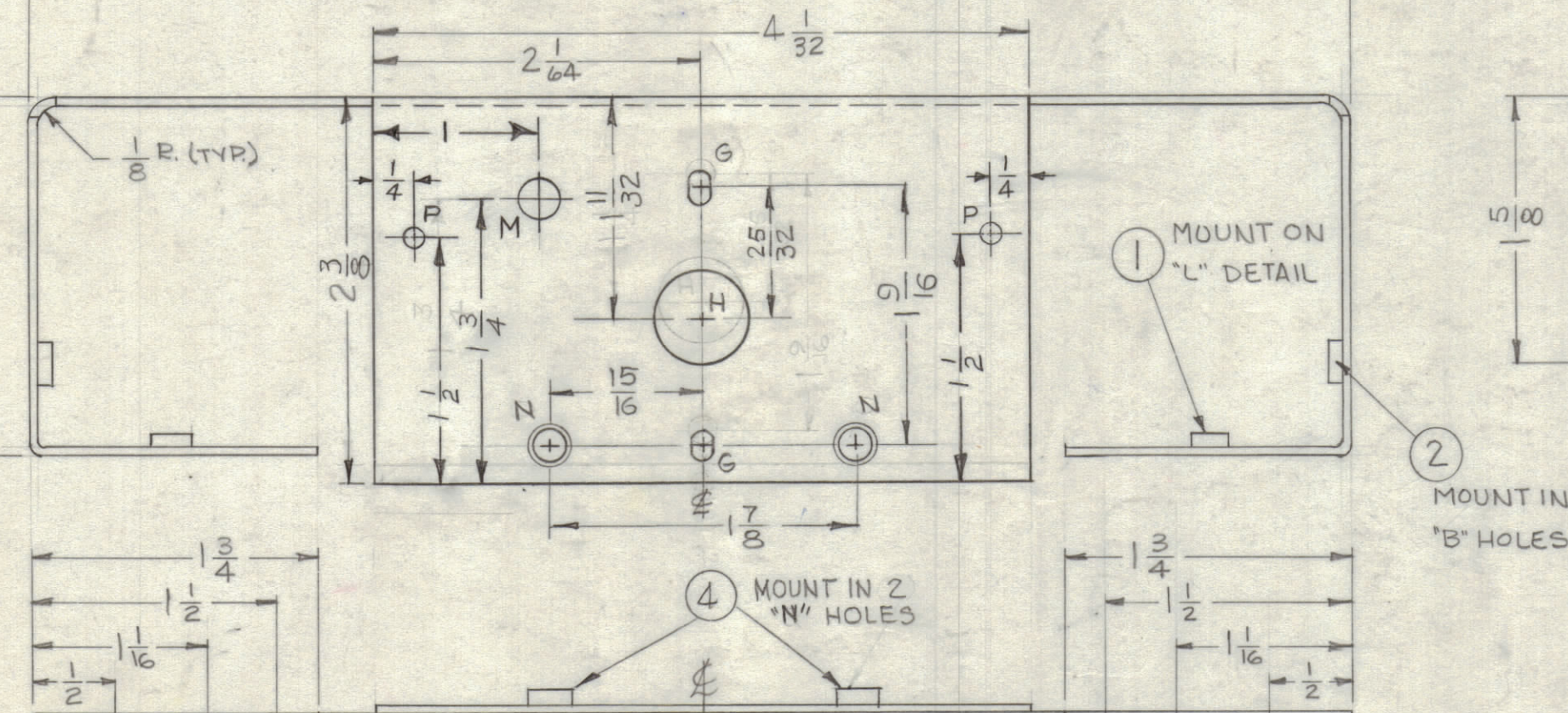
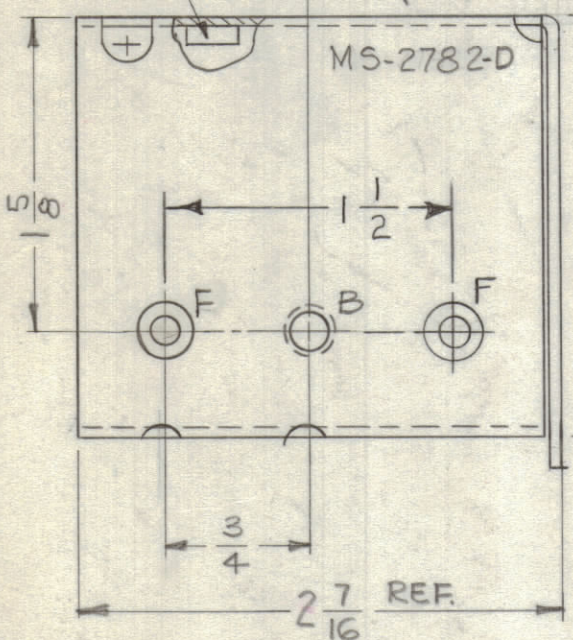
REVISIONS						
ZONE	SYM	DESCRIPTION	DATE	E.M.N. NO.	DRAFT	CHKD APPD.
-	B	REVISED & REDRAWN	11/14/63	10204	JM	WFB
D5D4	C	2 'P' HOLES ADDED TO LEGENDE PICT.	5/14/64	11399	A.M.	
B4	D	1/2 TYP. DIM. ADDED	6-22-64	11643	A.M.	

LEGEND		
HOLE	DESCRIPTION	REQ.
A	.158 ± .002 DIA HOLE CSINK 82° TO .195 DIA.	5
B	.191 - .194 DIA	2
C	.196 DIA. HOLE, CSINK 82° TO .390 DIA.	6
D	.189 DIA.	2
E	.120 DIA. HOLE, CSINK 82° TO .230 DIA.	2
F	.144 DIA. HOLE, CSINK 82° TO .284 DIA.	4
G	1/8 X 3/16 SLOT	2
H	9/16 DIA.	1
J	1/4 X 3/4 SLOT	2
K	SEE DETAIL	2
L	SEE DETAIL	4
M	1/4 DIA	1
N	.189 DIA.	2
P	1/8 DIA.	2



③ MOUNT IN 2 "D" HOLES

METAL STAMP TMC PART NO. 1/8 HIGH GOTHIC.



MS-2782 D

REQ'D.	ITEM	PART NUMBER	DESCRIPTION	SYMBOL
5	5	TE-169-1	FEED THRU, TEFLON	A
2	4	TE-108-26	STANDOFF, RIVET TYPE	N
2	3	TE-108-6	STANDOFF, RIVET TYPE	D
2	2	NT-129-632-4	NUT, ROUND, SWAGE TYPE	B
8	1	NT-129-440-4	NUT, ROUND, SWAGE TYPE	L*DETAIL

LIST OF MATERIAL			
MATERIAL	TITLE	DATE	FINAL APPROVAL
.064, ALUMINUM 5052-H32	THE TECHNICAL MATERIEL CORP. MAMARONECK, NEW YORK	5-7-63	BP
FINISH 5404 IRIDITE 14-2 AL-COAT	TITLE CHASSIS, OSC.	DATE 3/24/63	DATE DATE
UNLESS OTHERWISE SPECIFIED DIMENSIONS ARE IN INCHES AND INCLUDE CHEMICALLY APPLIED OR PLATED FINISHES		ELECT. DES.	DATE
DECIMALS .X ± .05 .XX ± .01 .XXX ± .005		MECH. DES.	
FRACTIONS ± 1/64 ANGLES ± 0° 30'		DATE 9-24-63	SHEET

~ UNLESS OTHERWISE SPECIFIED ~  
1 - USE MATERIAL THICKNESS FOR MAX. RADIUS ON ALL BENDS.  
2 - ALL BENDS 90°  
3 - MOUNT INSERTS AFTER FINISHING.

GPR-92	
Q'TY/UNIT	MODEL USED ON
SCALE	ASS'Y. NO.
1:1	
THE CONTENTS OF THIS DRAWING ARE THE EXCLUSIVE PROPERTY OF THE TECHNICAL MATERIEL CORP. ITS UNAUTHORIZED USE OR REPRODUCTION IN WHOLE OR IN PART IS STRICTLY FORBIDDEN.	

NOTES

UNLESS OTHERWISE SPECIFIED DIMENSIONS ARE IN INCHES AND INCLUDE CHEMICALLY APPLIED OR PLATED FINISHES	
TOLERANCES	ANGLES
DECIMALS .X ± .05 .XX ± .01 .XXX ± .005	FRACTIONS ± 1/64 ± 0° 30'