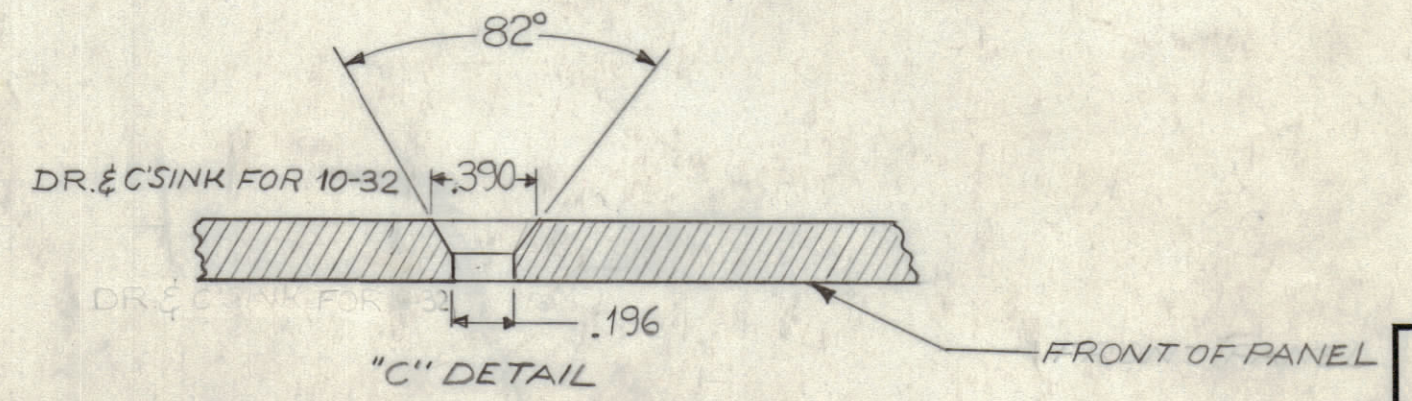
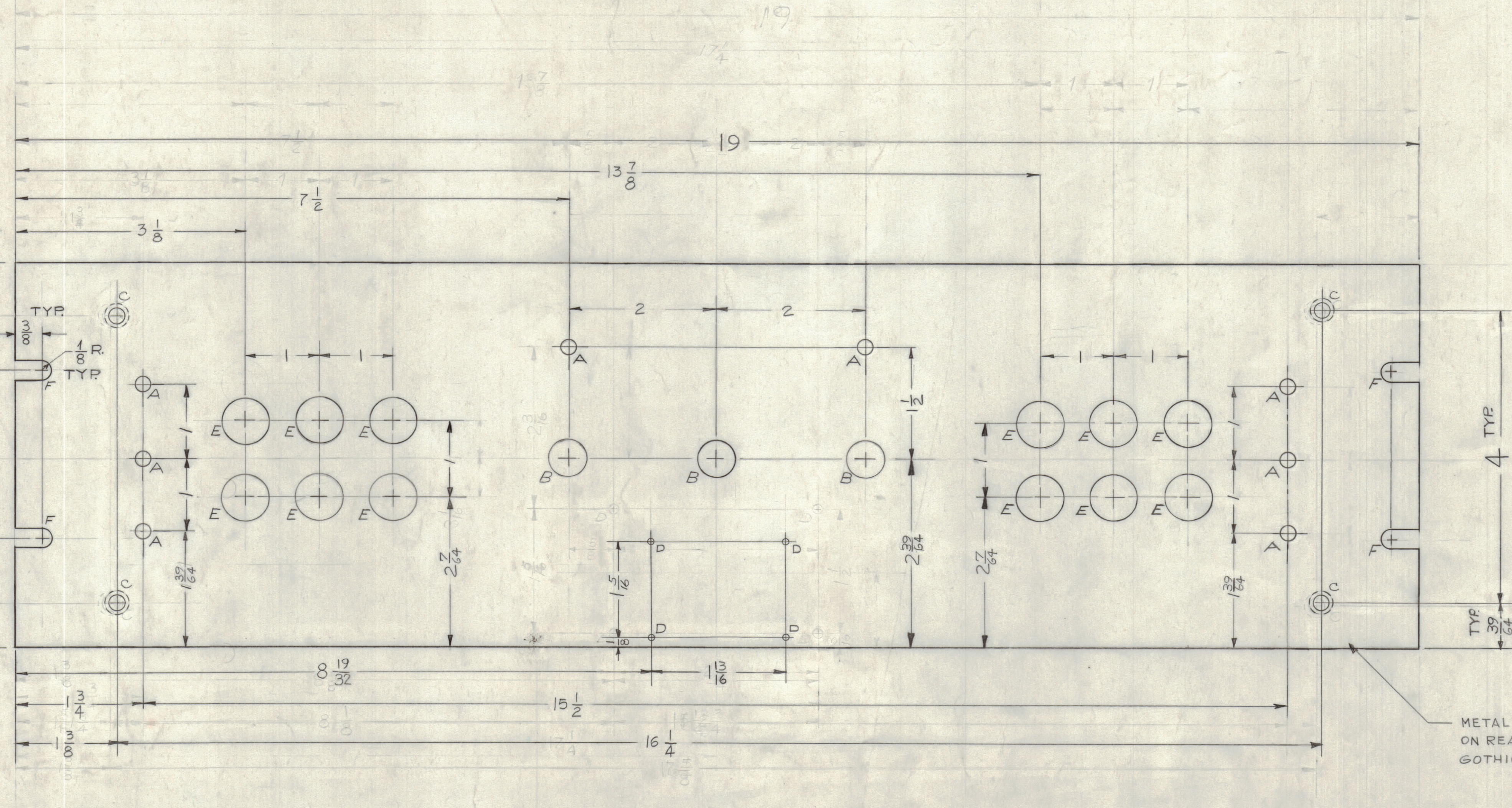


NOTICE TO PERSONS RECEIVING THIS DRAWING
 THE TECHNICAL MATERIEL CORPORATION claims proprietary right in the material disclosed herein. This drawing is issued in confidence for engineering information only and may not be reproduced or used to manufacture anything shown herein without permission from THE TECHNICAL MATERIEL CORPORATION to the user. This drawing is loaned for mutual assistance and is subject to recall at any time.

Property of:
 THE TECHNICAL MATERIEL CORPORATION
 MAMARONECK, NEW YORK

HOLE	DESCRIPTION	REQ.
A	1/8 DIA.	8
B	1/4 DIA.	3
C	SEE DETAIL	4
D	.076 DIA.	4
E	1/2 DIA.	12



METAL STAMP TMC PART NO.
 ON REAR OF PANEL 1/8 HIGH
 GOTHIC

MACHINING~
 1~ LATERAL BOW OF PANEL MUST BE KEPT TO .031 TOLERANCE.
 2~ MILL ALL EDGES.
 3~ HOLES MUST BE DRILLED.
 4~ PANEL MUST BE FREE OF ALL MACHINING MARKS GOUGES & SCRATCHES.
 IF NECESSARY SAND FRONT OF PANEL WITH NO.120 GRIT SANDPAPER.

FINISH~
 S404 YELLOW IRIDITE
 S114 ZINC CHROMATE PRIMER FRONT &
 S115 TMC SMOOTH GREY ENAMEL EDGES ONLY

DECIMALS	FRACTIONS
± .05	± 1/4
± .01	± 1/16
± .005	± 1/32

SYM	ZONE	DESCRIPTION	DATE	CH. NO.	DRAFTS	CHECKER	ENG. APP.
UNLESS OTHERWISE SPECIFIED: DIMENSIONS ARE IN INCHES			SCALE FULL				
TOLERANCES ON FRACTIONS ± 1/64			MAXIMUM ALLOWABLE TOLERANCES HAVE BEEN DETERMINED AND ANY DEVIATIONS WILL BE CAUSE FOR REJECTION. REMOVE ALL BURRS & SHARP EDGES				
DECIMALS ± .005			ANGLES ± 1/2°				

REF-LD-1032 (8) SHEETS 1&2

REQ. ITEM	PART NO.	DESCRIPTION	SYMBOL
1	HFP-1	THE TECHNICAL MATERIEL CORP. MAMARONECK, NEW YORK MACHINING; FRONT PANEL	
2024-T3		C.A.	
TYPE & TEMPER.		HEAT TREAT. SPEC.	
SEE NOTE		FINISH & SPEC. NO.	
DRAWN		CHECKED	FINAL APPROVAL
RK		RK	MS-2765
ELEC. DES. APP.		MECH. DES. APP.	SHEET OF

MS-2765