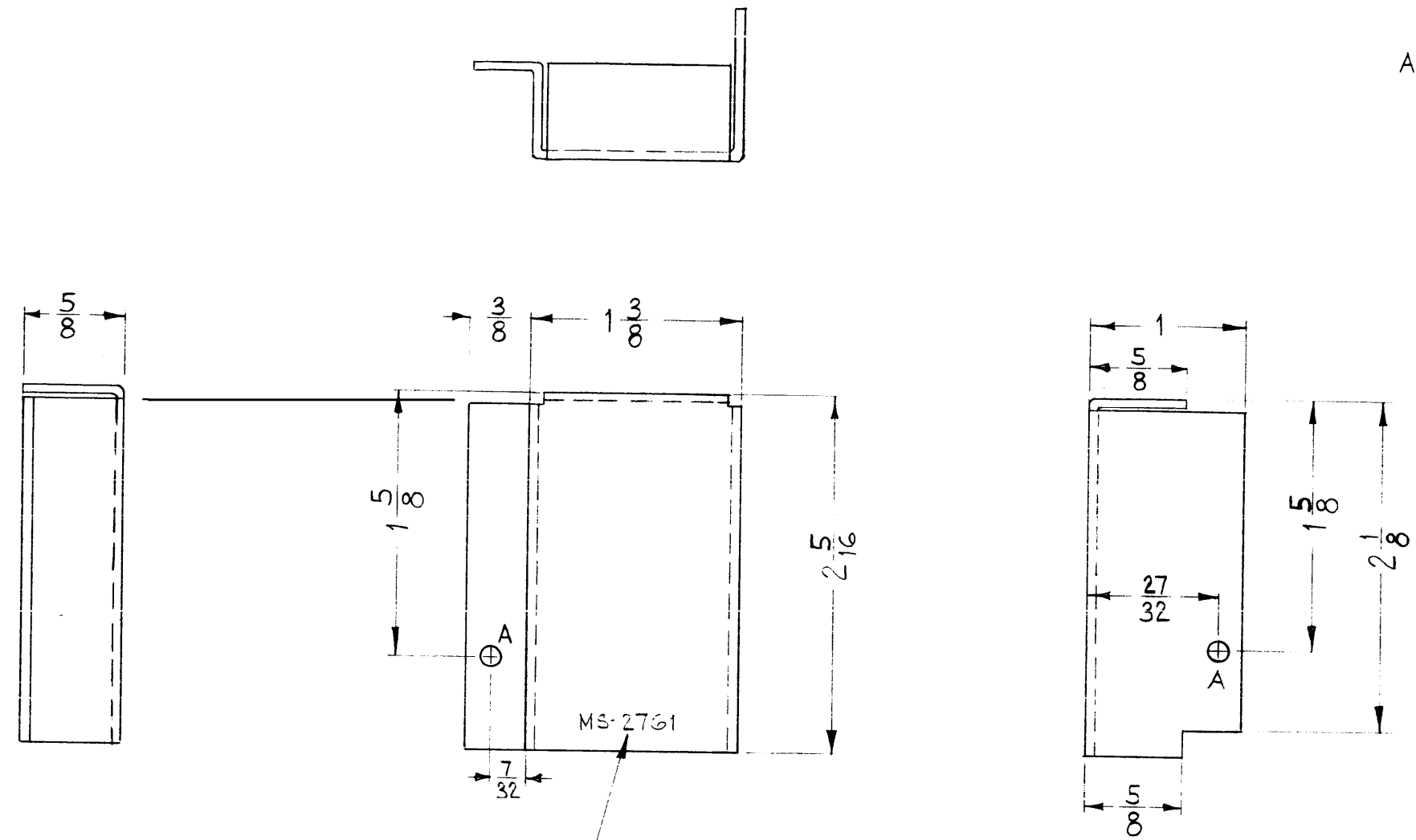


MS-2761

A = 1/8 DIA. 2 REQ.



METAL STAMP TMC PART NO.
AS SHOWN 1/8 HIGH GOTHIC.

THE TECHNICAL MATERIEL CORPORATION
MAMARONECK, NEW YORK

SYM	DESCRIPTION	DATE	CH. NO.	DRAFTS	CHECKER	ENG. APP.
	UNLESS OTHERWISE SPECIFIED: DIMENSIONS ARE IN INCHES TOLERANCES ON FRACTIONS ± 1/64 DECIMALS ± .005 ANGLES ± 1/2°					

REQ. PER UNIT	MODEL	SECTION	ASS'Y. NO.	DATE
2	AFC-3			4-12-62
2	AFC-2A			4-12-62
2	AFC-2			11-16-61

REQ. ITEM	PART NO.	DESCRIPTION	SYMBOL
	.051	THE TECHNICAL MATERIEL CORP. MAMARONECK, NEW YORK	
	ALUMINUM	COVER, OVEN TERMINAL	
	5052-H32		
	S404 YEL IRIDITE		
	MS-2761		