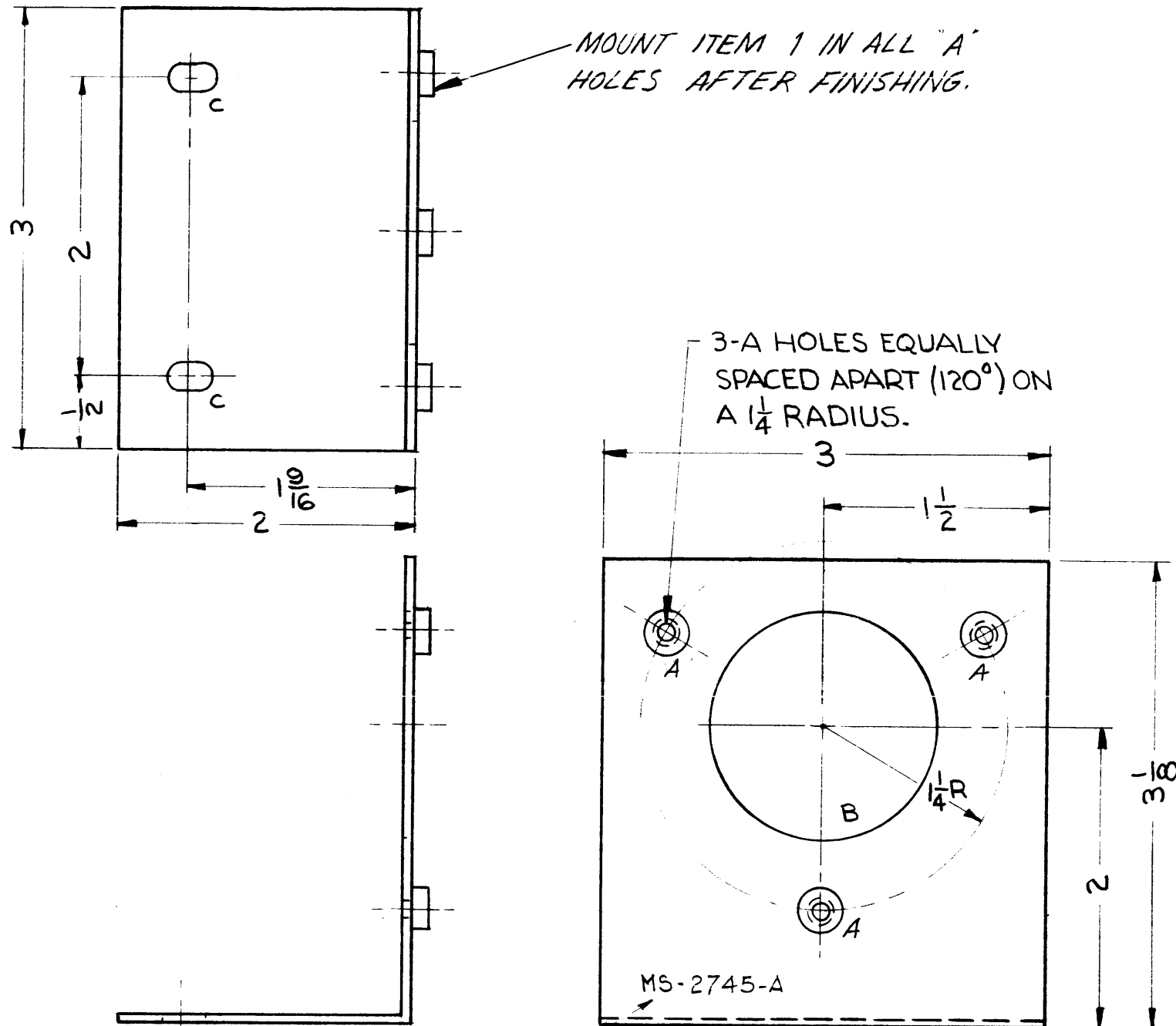


MS-2745 A



- HOLES:
- A- .221-.224 DIA. 3 REQ
 - B- 1/2 DIA. 1 REQ.
 - C- 3/16 x 5/16 SLOT 2 REQ.

THE TECHNICAL MATERIEL CORPORATION
 MAMARONECK, NEW YORK

PROPERTY OF:
 THE TECHNICAL MATERIEL CORPORATION
 MAMARONECK, NEW YORK

METAL STAMP TMC PART
 1/8 HIGH GOTHIC AS SHOWN

SYM	DESCRIPTION	DATE	CH. NO.	DRAFTS	CHECKER	ENG. APP.
A	STOCK SIZE WAS .062	11-27-61	5942	G.D.L.		

UNLESS OTHERWISE SPECIFIED:
 DIMENSIONS ARE IN INCHES
 TOLERANCES ON
 FRACTIONS ± 1/64 DECIMALS ± .05 ANGLES ± 1/2°

SCALE: 1"=1"

MAXIMUM ALLOWABLE TOLERANCES HAVE BEEN DETERMINED AND ANY DEVIATIONS WILL BE CAUSE FOR REJECTION.
 REMOVE ALL BURRS AND SHARP EDGES

REQ. PER UNIT	MODEL	SECTION	ASS'Y. NO.	DATE
1	TER 250/300U		A-2225	11-4-61

USED ON

3	1	NT-129-832-4	NUT, ROUND, SWAGE TYPE	A
REQ.	ITEM	PART NO.	DESCRIPTION	SYMBOL
.064			THE TECHNICAL MATERIEL CORP. MAMARONECK, NEW YORK	
ALUMINUM			BRACKET, RESISTOR SUPPORT	
5052-H32			P. Jurek	J. Do
TYPE & TEMPER		HEAT TREAT. SPEC.	DRAWN	CHECKER
S-404 YEL. IRIDITE			aa	
FINISH & SPEC. NO.		ELEC. DES. APP.	MECH. DES. APP.	FINAL APPROVAL
				MS-2745 A