

THE CONTENTS OF THIS DRAWING ARE THE EXCLUSIVE PROPERTY OF THE TECHNICAL MATERIEL CORP. ITS UNAUTHORIZED USE OR REPRODUCTION IN WHOLE OR IN PART IS STRICTLY FORBIDDEN.

REQ. PER UNIT

6

USED ON

MODEL

ASS'Y. NO.

DATE

TER 250/300U

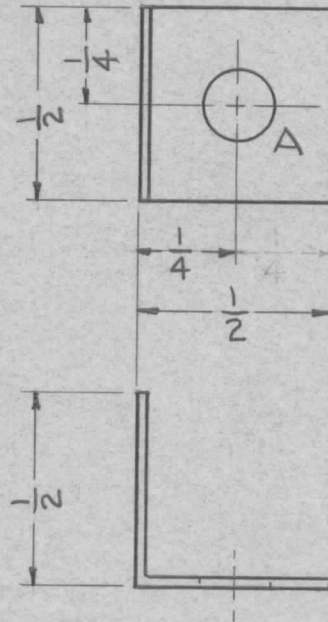
A-2225

11-4-61

MS-2743

HOLE:

A - $\frac{3}{16}$ DIA.



UNLESS OTHERWISE SPECIFIED DIMENSIONS ARE IN INCHES AND INCLUDE CHEMICALLY APPLIED OR PLATED FINISHES	
DECIMALS .X ± .05 .XX ± .01 .XXX ± .005	FRACTIONS ± 1/64 ANGLES ± 0° 30'

CUT HERE
GUARANTEED
2-66

SYM	DESCRIPTION	DATE	CH. NO.	DRAFTS	CHECKER	ENG. APP.	REQ.	ITEM	PART NO.	DESCRIPTION	SYMBOL		
									.025	THE TECHNICAL MATERIEL CORP. MAMARONECK, NEW YORK	CONTACT, RESISTOR		
									STOCK SIZE				
									COPPER				
									MATERIAL				
UNLESS OTHERWISE SPECIFIED: DIMENSIONS ARE IN INCHES TOLERANCES ON FRAC. ± 1/64 DEC. ± .005 ANGLES ± 1/2°		SCALE: 2 TO 1		MAXIMUM ALLOWABLE TOLERANCES HAVE BEEN DETERMINED AND ANY DEVIATIONS WILL BE CAUSE FOR REJECTION. REMOVE ALL BURRS AND SHARP EDGES							P. Turchin	JLQ	
									TYPE & TEMPER	HEATTREAT. SPEC.	DRAWN	CHECKED	FINAL APPROVAL
									S-245 SILVER PLATE .0002		aa		MS-2743
									FINISH & SPEC. NO.		ELEC. DES. APP.	MECH. DES. APP.	