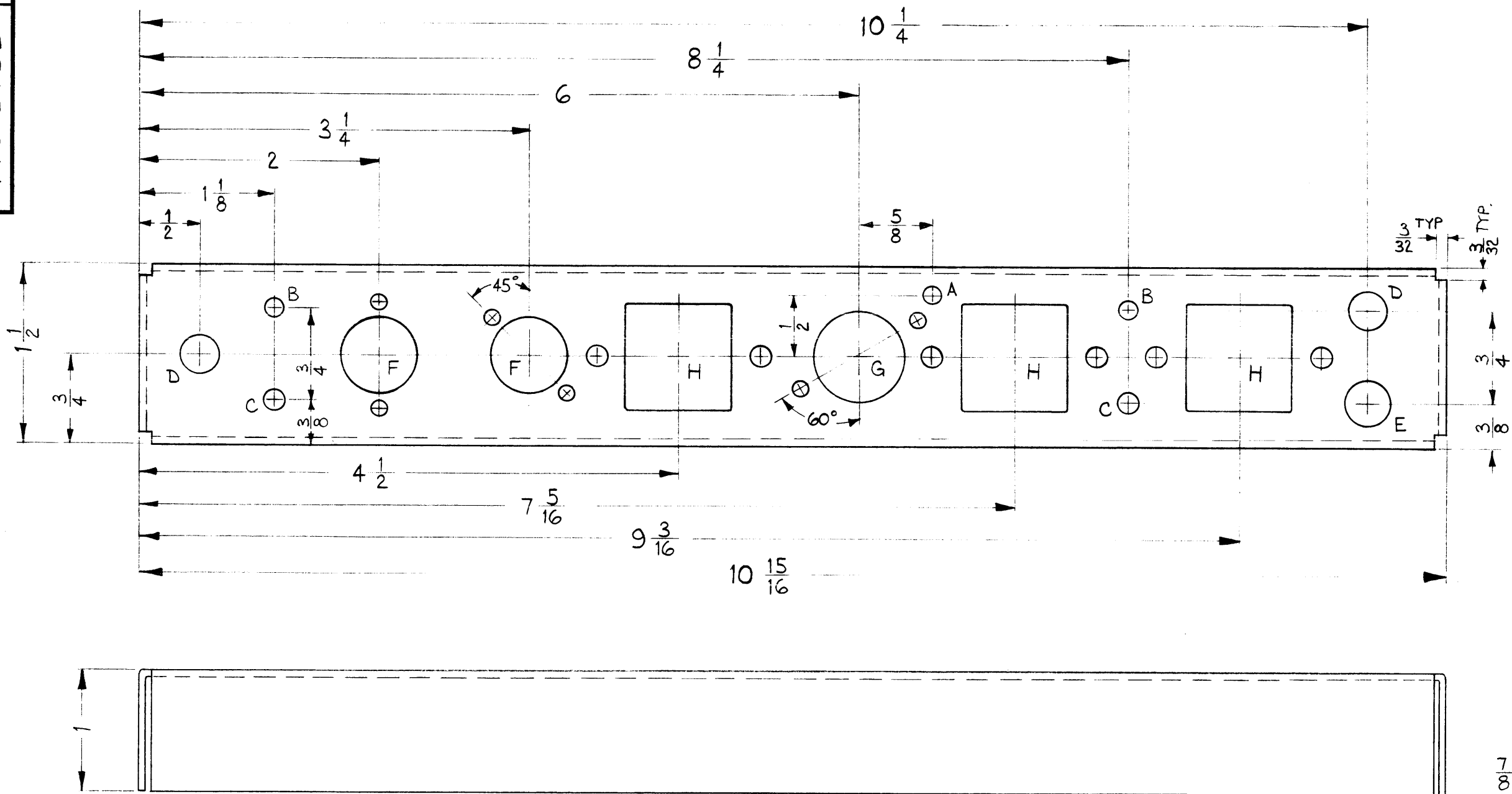
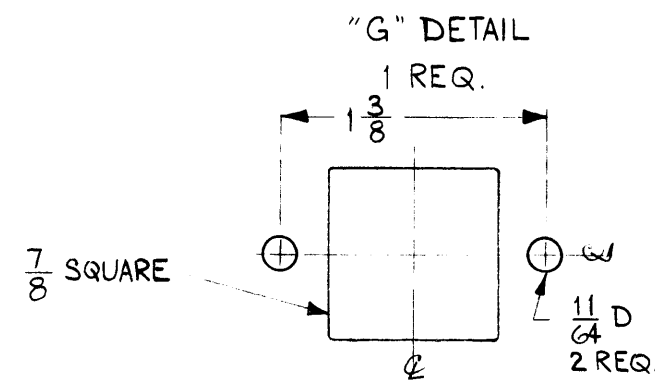
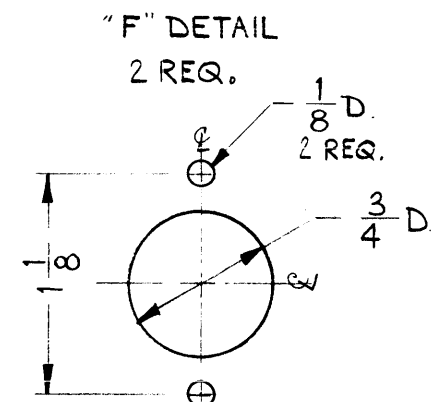
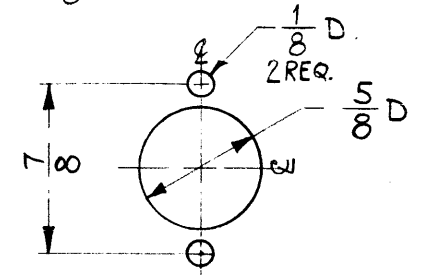


MS-2733



- A ~ $\frac{9}{64}$ DIA. 1 REQ.
- B ~ .166 DIA. 2 "
- C ~ $\frac{11}{64}$ DIA. 2 "
- D ~ $\frac{5}{16}$ DIA. 2 "
- E ~ $\frac{3}{8}$ DIA. 1 "



USE MATERIAL THICKNESS FOR MAX. RADIUS ON ALL BENDS UNLESS OTHERWISE SPECIFIED

REF: LD-1000 (2).

SYM	DESCRIPTION	DATE	CH. NO.	DRAFTS	CHECKER	ENG. APP.
UNLESS OTHERWISE SPECIFIED:		SCALE: FULL (DO NOT SCALE).				
DIMENSIONS ARE IN INCHES		MAXIMUM ALLOWABLE TOLERANCES HAVE BEEN DETERMINED AND ANY DEVIATIONS WILL BE CAUSE FOR REJECTION.				
TOLERANCES ON FRACTIONS $\pm 1/64$ DECIMALS $\pm .005$ ANGLES $\pm 1/2^\circ$		REMOVE ALL BURRS AND SHARP EDGES				

REQ. PER UNIT	MODEL	SECTION	ASS'Y. NO.	DATE
1	HFS-1			8-15-62

REQ.	ITEM	PART NO.	J. STRUMMER	DESCRIPTION	SYMBOL
	.064			THE TECHNICAL MATERIEL CORP.	
	STOCK SIZE			MAMARONECK, NEW YORK	
	ALUMINUM			CHASSIS-REGENERATIVE DIVIDER	
	MATERIAL				
	5052-H32		M.L.F.		
	TYPE & TEMPER	HEAT TREAT. SPEC.	DRAWN	CHECKER	FINAL APPROVAL
	S404 YEL. IRIDITE		JMA	JMA	MS-2733
	FINISH & SPEC. NO.		ELEC. DES. APP.	MECH. DES. APP.	