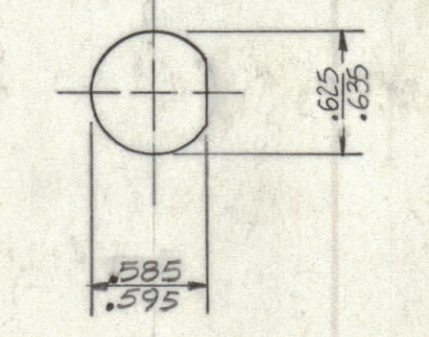
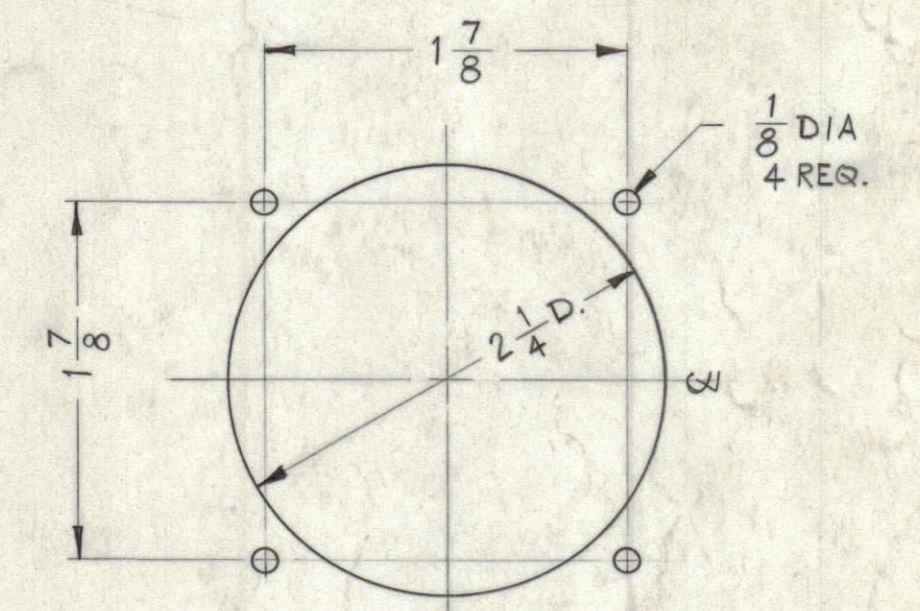
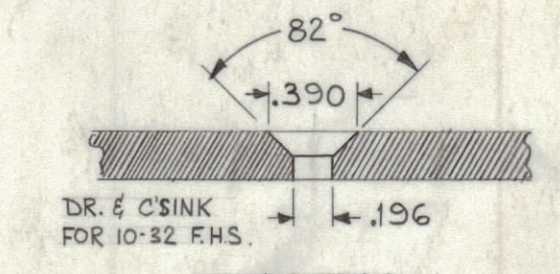
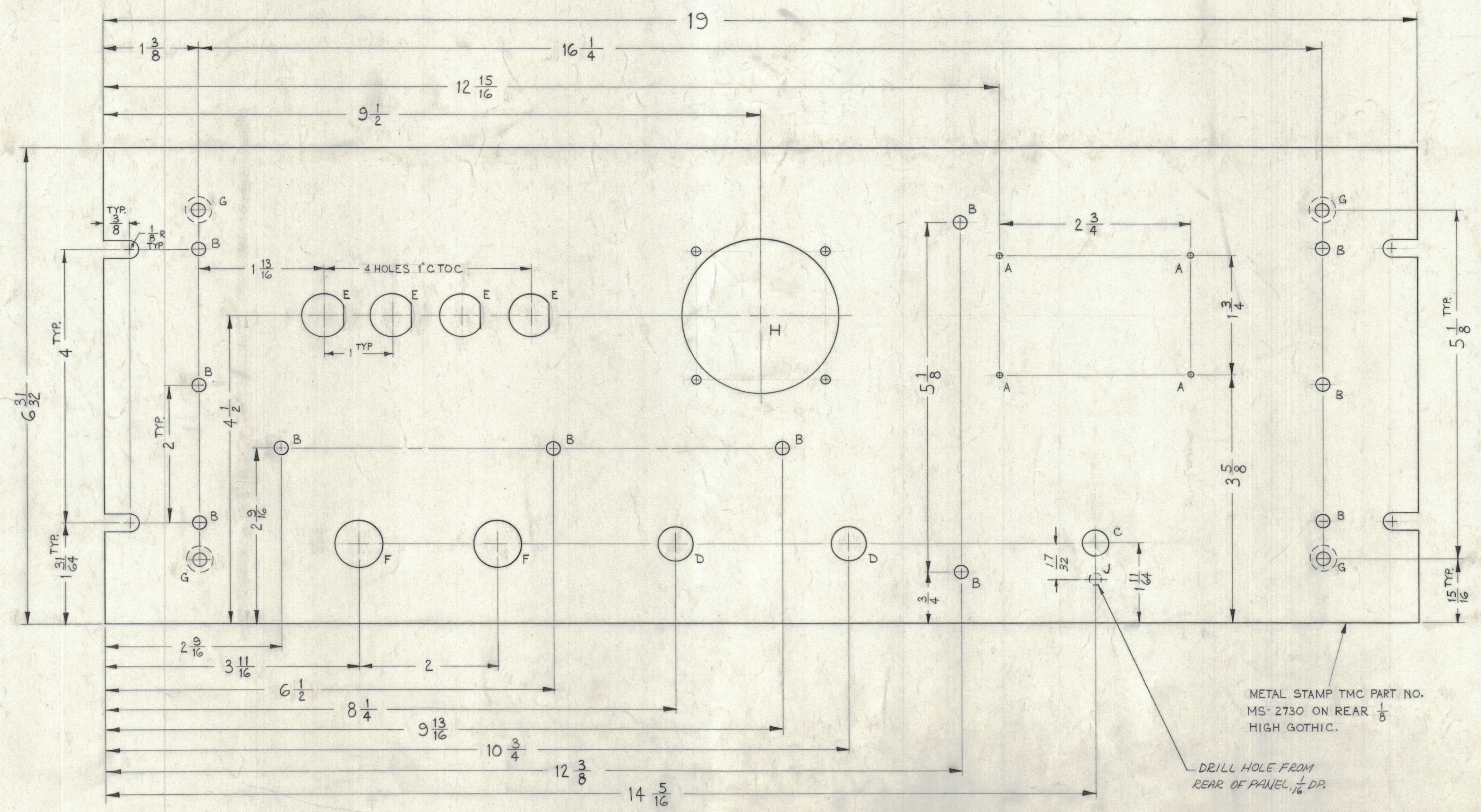


NOTICE TO PERSONS RECEIVING THIS DRAWING
 THE TECHNICAL MATERIEL CORPORATION claims proprietary right in the material disclosed hereon. This drawing is issued in confidence for engineering information only and may not be reproduced or used to manufacture anything shown hereon without permission from THE TECHNICAL MATERIEL CORPORATION to the user. This drawing is loaned for mutual assistance and is subject to recall at any time.
 Property of:
 THE TECHNICAL MATERIEL CORPORATION
 MAMARONECK, NEW YORK

- A - .076 DIA. 4 REQ.
- B - $\frac{3}{16}$ DIA. 11 "
- C - $\frac{3}{8}$ DIA. 1 "
- D - $\frac{1}{2}$ DIA. 2 "
- E - SEE DETAIL 4 "
- F - $\frac{11}{16}$ DIA. 2 "



J - $\frac{5}{32}$ DIA x $\frac{1}{16}$ DP 1 REQ'D.

METAL STAMP TMC PART NO. MS-2730 ON REAR $\frac{1}{8}$ HIGH GOTHIC.

DRILL HOLE FROM REAR OF PANEL $\frac{1}{16}$ DP.

MACHINING -
 1- LATERAL BOW OF PANEL MUST BE KEPT TO .031 TOLERANCE.
 2- MILL ALL EDGES.
 3- HOLES MUST BE DRILLED UNLESS OTHERWISE SHOWN.
 4- PANEL MUST BE FREE OF ALL MACHINING MARKS GOUGES & SCRATCHES.
 IF NECESSARY SAND FRONT OF PANEL WITH NO. 120 GRIT SANDPAPER.

FINISH -
 S404 YELLOW IRIDITE.
 S114 ZINC CHROMATE PRIMER. FRONT &
 S115 TMC SMOOTH GREY ENAMEL. EDGES ONLY.

DECIMALS	FRACTIONS
.XX ± .01	$\frac{1}{64}$
.XXX ± .005	$\frac{1}{32}$
	ANGLES
	± 0° 30'

SYM	ZONE	DESCRIPTION	DATE	CH. NO.	DRAFTS	CHECKER	ENG. APP.
UNLESS OTHERWISE SPECIFIED: DIMENSIONS ARE IN INCHES			SCALE FULL (DO NOT SCALE).				
TOLERANCES ON FRACTIONS ± 1/64			MAXIMUM ALLOWABLE TOLERANCES HAVE BEEN DETERMINED AND ANY DEVIATIONS WILL BE CAUSE FOR REJECTION. REMOVE ALL BURRS & SHARP EDGES				
DECIMALS ± .005							
ANGLES ± 1/2°							

REF: LD-996

REQ. ITEM	PART NO.	DESCRIPTION	SYMBOL
1	3/16	THE TECHNICAL MATERIEL CORP. MAMARONECK, NEW YORK	
	ALUMINUM	FRONT PANEL, MACHINING	
MATERIAL			
2024-T3			
TYPE & TEMPER		HEAT TREAT. SPEC.	
SEE NOTE			
FINISH & SPEC. NO.		ELEC. DES. APP. MECH. DES. APP. SHEET OF	

REQ. PER UNIT	MODEL	SECTION	ASS'Y. NO.	DATE
1	LFA-2			10-27-61

MS-2730