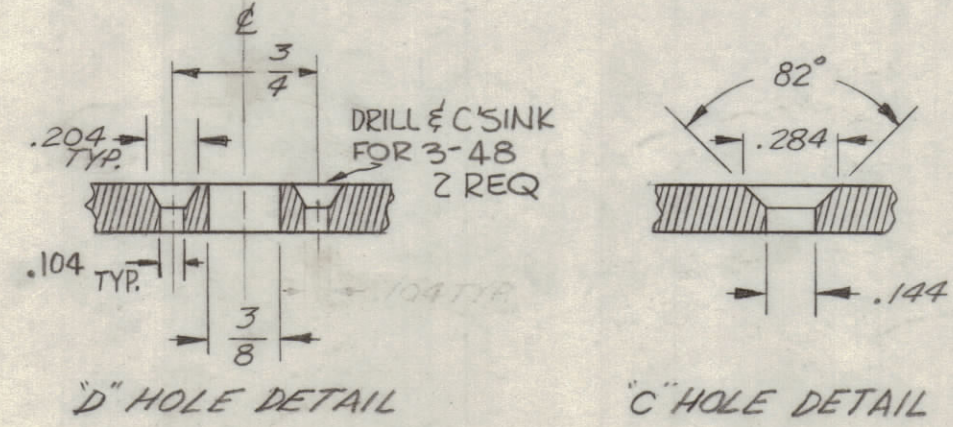


METAL STAMP TMC PART NO. 1/8 HIGH GOTHIC, AS SHOWN.

MOUNT ITEM(2) IN ALL (B) HOLES AS SHOWN AFTER FINISHING

MOUNT ITEM(2) IN ALL (F) HOLES AS SHOWN AFTER FINISHING

USE MATERIAL THICKNESS FOR MAX. RADIUS ON ALL BENDS UNLESS OTHERWISE SPECIFIED



- HOLES:**
- A - 7/32 DIA. 2 REQ.
 - B - .221-.224 DIA. 2 REQ.
 - C - DRILL & C'SINK FOR 6-32 (SEE DETAIL) 6 REQ.
 - D - (SEE DETAIL) 6 REQ.
 - E - 1" DIA. 5 REQ.
 - F - .250-.253 DIA. 4 REQ.

7	6	5	4	3	2	1				
A	E5	ADDED ITEM(2) "F" HOLES WERE 1 3/4 DIA.		7-29-63	9658	AR	RY	RB		
SYMBOL			ZONE	DESCRIPTION		DATE	CH. NO.	DRAFTS	CHECKER	ENG. APP.
UNLESS OTHERWISE SPECIFIED:										
DIMENSIONS ARE IN INCHES										
TOLERANCES ON										
FRACTIONS ± 1/64 DECIMALS ± .005 ANGLES ± 1/2°										
SCALE										
MAXIMUM ALLOWABLE TOLERANCES HAVE BEEN DETERMINED AND ANY DEVIATIONS WILL BE CAUSE FOR REJECTION. REMOVE ALL BURRS & SHARP EDGES										

UNLESS OTHERWISE SPECIFIED DIMENSIONS ARE IN INCHES AND INCLUDE CHEMICALLY APPLIED OR PLATED FINISHES

TOLERANCES

DECIMALS	FRACTIONS
.X ± .05	± 1/64
.XX ± .01	ANGLES
.XXX ± .005	± 0° 30'

CUT HERE TO OBTAIN PART

4	2	NT-129-1032-4	NUT, ROUND, SWAGE TYPE	F
2	1	NT-129-832-4	NUT, ROUND, SWAGE TYPE	B
REQ. ITEM	PART NO.		DESCRIPTION	SYMBOL
.081		THE TECHNICAL MATERIEL CORP.		
STOCK SIZE		MAMARONECK, NEW YORK		
ALUMINUM		PLATE, SIDE, RIGHT		
MATERIAL		5052-H32		
TYPE & TEMPER		HEAT TREAT. SPEC.		
S404 YEL. IRIDITE		ELEC. DES. APP. MECH. DES. APP. SHEET OF		
FINISH & SPEC. NO.		MS-2725 A		

1	HFI-1	SECTION	ASS'Y. NO.	DATE
REQ. PER UNIT	MODEL	SECTION	ASS'Y. NO.	DATE
USED ON				